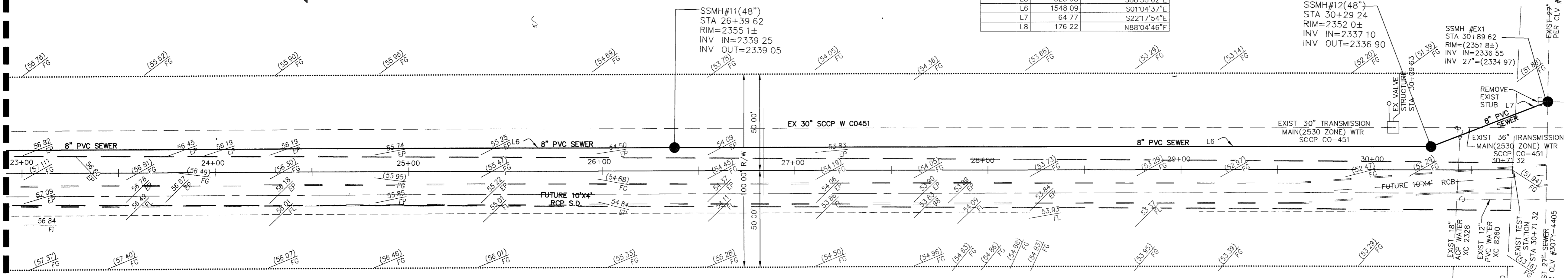
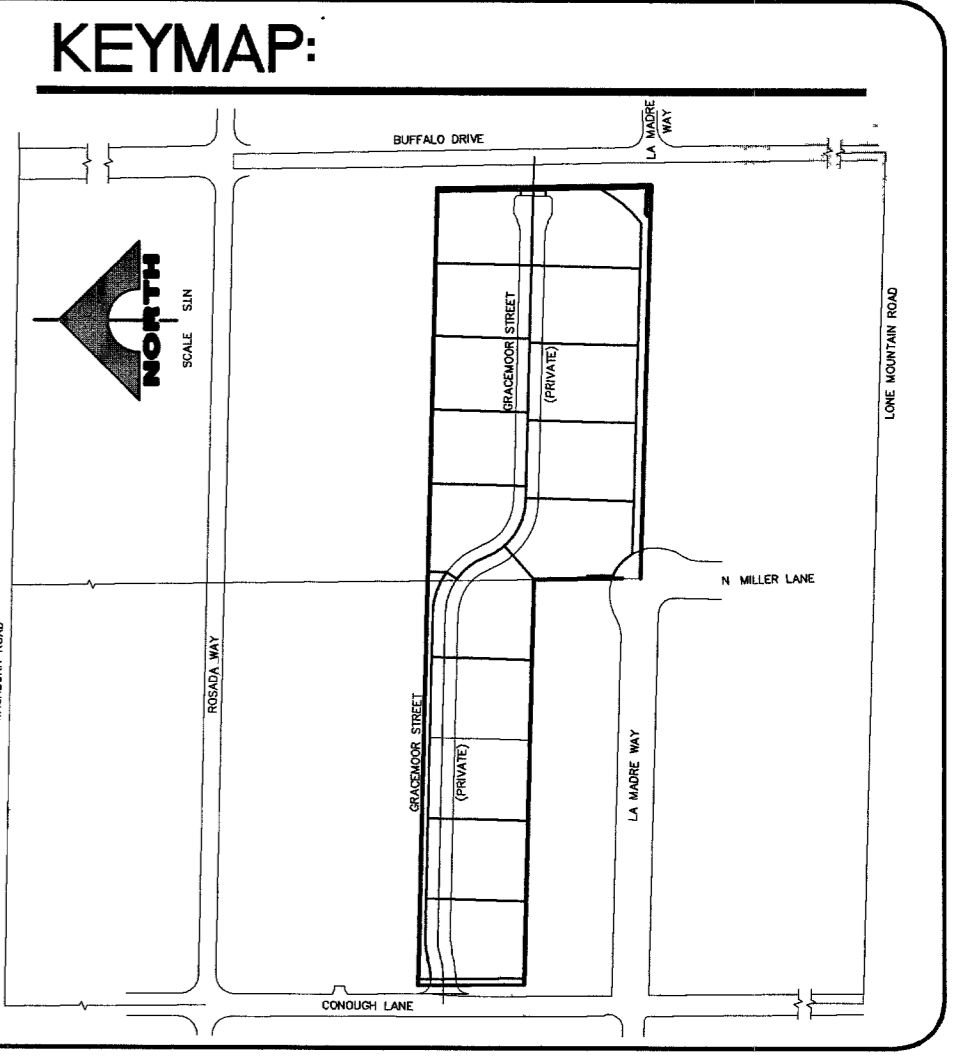


LINE	LENGTH	BEARING
L1	425.70	S88°38'02"E
L2	80.65	N65°53'08"W
L3	58.65	N24°35'56"W
L4	68.70	N51°26'37"W
L5	623.98	S88°38'02"E
L6	1548.09	S01°04'37"E
L7	64.77	S22°17'54"E
L8	176.22	N88°04'46"E

SEE SHEET PP4
 MATCHLINE STA: 23+00



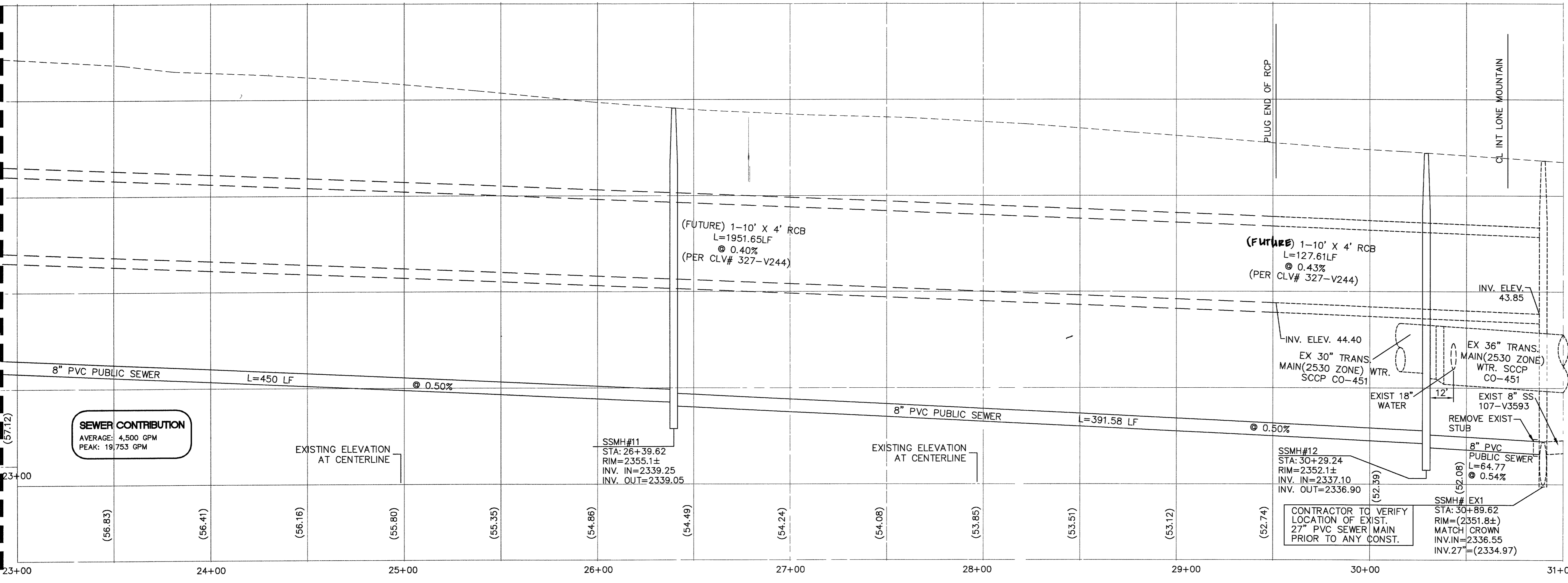
PLAN: BUFFALO DRIVE PUBLIC
 SCALE : 1" = 30'



LEGEND + ABBREVIATIONS

- ABBREVIATIONS**
- W = WATER
 - S = SEWER
 - G = GAS
 - SD = STORM DRAIN
 - SL = STREET LIGHT
 - SMH = SEWER MANHOLE
 - SDMH = STORM DRAIN MH
 - CLV = CITY OF LAS VEGAS
 - LVMWD = LAS VEGAS VALLEY WATER DISTRICT
 - EX = EXISTING
 - FL = FLOW LINE
 - HP = HIGH POINT
 - R/W = RIGHT-OF-WAY
 - TC = TOP BACK OF CURB
 - FG = FINISHED GRADE
 - BCR = BEGIN CURB RETURN
 - DS = DOWN SPOUT
 - USDCCA = UNIFORM STANDARD DRAWING CLARK COUNTY AREA
 - CF = CURB FACE
 - BW = BACK OF WALK
 - FS = FINISH SURFACE
 - NG = NATURAL GRADE
 - FF = FINISH FLOOR
 - GB = GRADE BREAK
 - FUT = FUTURE
 - EP = EDGE OF PAVEMENT
 - TG = TOP OF GRATE
- DRAWING NUMBER FOR DETAIL WITH REFERENCE TO IT'S SHEET**
- INDICATES SEWER MANHOLE IN PROFILE
 - INDICATES STORM DRAIN MANHOLE IN PROFILE
 - EXIST. ELEVATION
 - PROPOSED ELEVATION
 - EXIST. SPOT ELEVATION
 - SUBDIVISION BOUNDARY
 - EASEMENT LINE
 - FUTURE LINE
 - STREET CENTERLINE
 - EDGE OF PAVEMENT
 - EXISTING IMPROVEMENTS
 - EXISTING GROUND CONTOURS
 - FINISH GROUND CONTOUR LINE
 - DRAINAGE FLOW LINE

SEE SHEET PP4
 MATCHLINE STA: 23+00



PROFILE: BUFFALO DRIVE PUBLIC

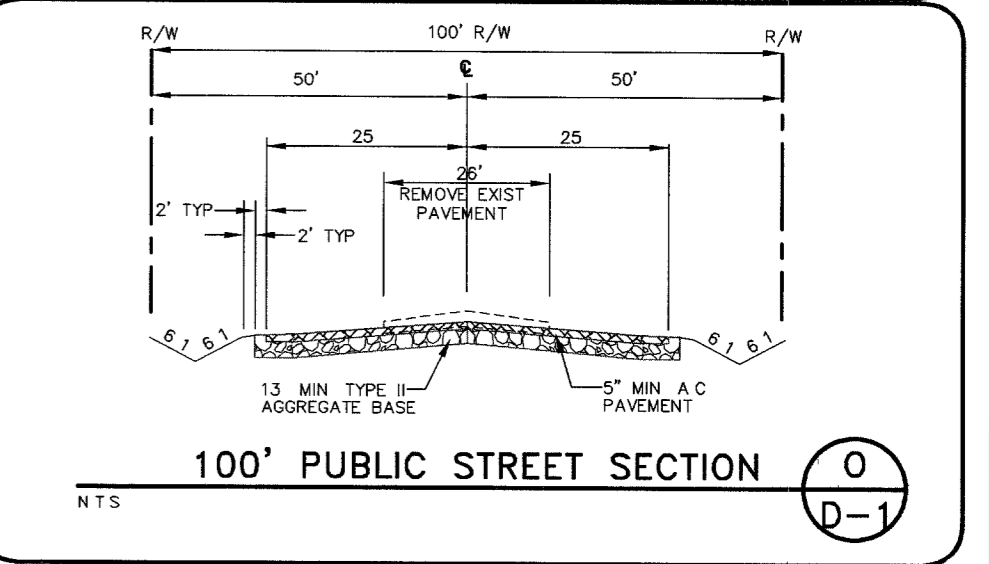
HOR. : 1" = 30'
 VERT. : 1" = 3'

NOTE:
 SEE SHEET UT1 FOR SEWER MANHOLE SCHEDULE

UTILITY NOTE:
 CONTRACTOR TO VERIFY ALL EXISTING UTILITY LOCATIONS AND DEPTHS PRIOR TO COMMENCING CONSTRUCTION.

CONSTRUCTION NOTES:

- CONSTRUCT 8' WIDE VALLEY GUTTER PER USD DWG NO 228
- CONSTRUCT 2-1/2" AC PAVEMENT OVER 10" AGGREGATE BASE PER TYPICAL SECTION. ACTUAL SECTION TO BE DETERMINED DURING CONSTRUCTION.
- CONSTRUCT 4' WIDE VALLEY GUTTER PER K/D1
- 2' FEATHER TO MATCH EXISTING PAVEMENT
- CONSTRUCT 30" ROLL TYPE CURB AND GUTTER PER STD DWG 217A
- REMOVE EXIST AC OVER AB
- CONSTRUCT 5" AC PAVEMENT OVER 13" MIN TYPE II AGGREGATE BASE PER TYPICAL SECTION. ACTUAL SECTION TO BE DETERMINED DURING CONSTRUCTION.



Call before you Dig
 1-702-455-7511
 CLARK COUNTY TRAFFIC OPERATIONS AND UNDERGROUND SERVICE (USA)

Call before you Dig
 1-702-593-6111
 UNDERGROUND SERVICE (USA)

Call before you Dig
 1-800-227-2600
 UNDERGROUND SERVICE (USA)

NOTE:
 ADD 2300 FT. TO ALL PROPOSED ELEVATIONS

BASIS OF BEARINGS
 NORTH 88 59'47" WEST ALONG THE NORTH LINE OF THE NORTHEAST QUARTER (NE 1/4) OF THE NORTHWEST QUARTER (NW 1/4) SECTION 33, TOWNSHIP 19 SOUTH, RANGE 60 EAST, M.D.M. AS SHOWN IN THE FINAL MAP OF "LAMPLIGHT GLEN AT BUFFALO AND WASHBURN" RECORDED IN BPPK 119, PAGE 48 RECORDS OF CLARK COUNTY, NEVADA.

BENCHMARK
 CITY OF LAS VEGAS BENCHMARK NO. 5LV9034C4 BEING A RIVET AND PLATE IN THE TOP OF CURB AT THE EAST SIDE OF TENAYA AND WASHBURN, ID #413
 ELEVATION = 714.1246 METERS OR 2342.92 FEET.
 NAVD 88

APPROVED FOR CONSTRUCTION
 1st APP'D-2-9-07
 DATE 5/4/07
 LAS VEGAS VALLEY WATER DISTRICT
 PROJECT #109564

R L HOME, LLC

CONOUGH ESTATES - IMPROVEMENT PLANS
 BUFFALO DRIVE (PUBLIC)
 STA. 23+00 TO STA. 31+00

DRAWING
PP5
 10 OF 10 SHEETS

H# 19687
 CLV DWG# 3071497