

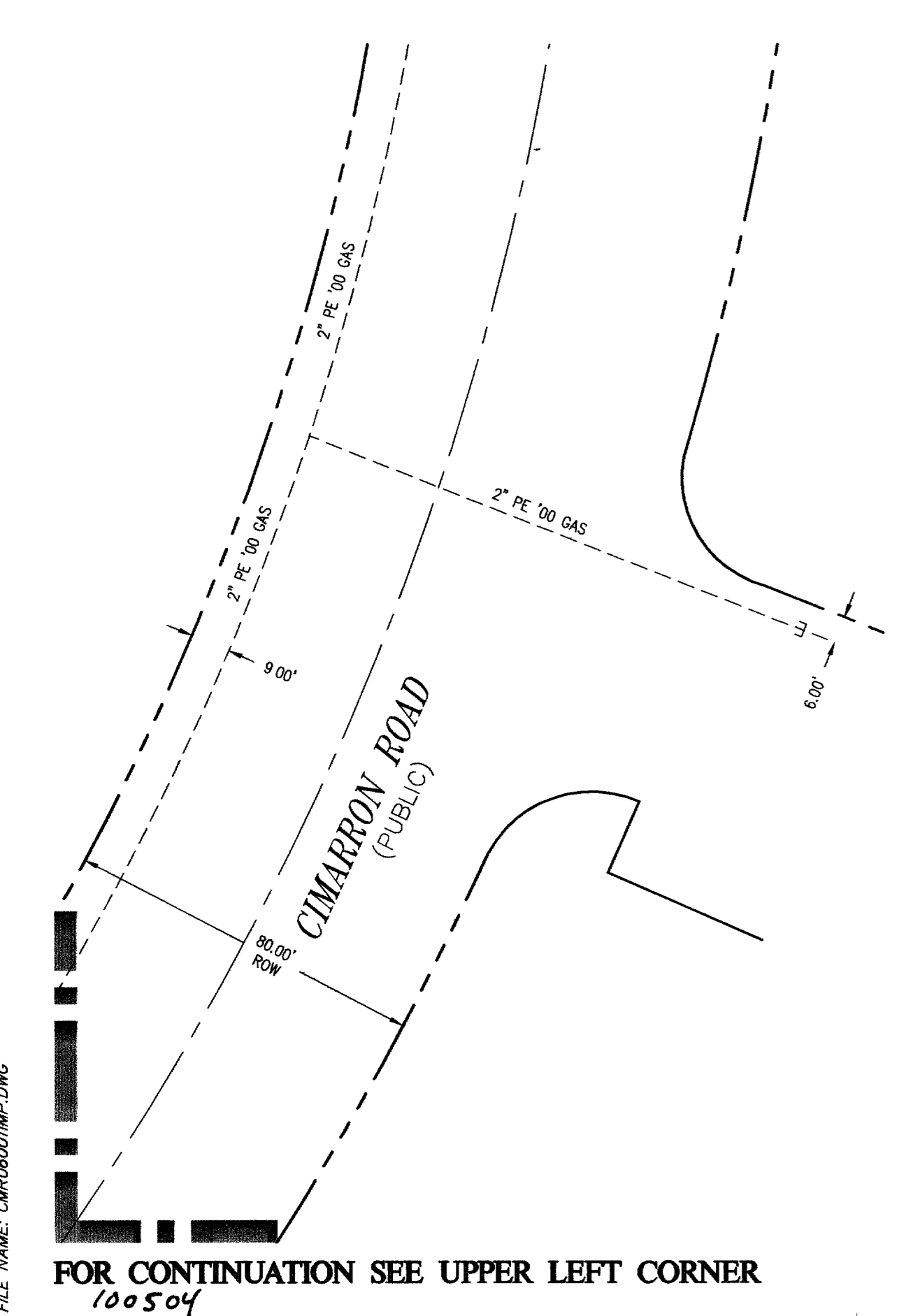
**BUILDING**

FF=2448.74

FOR CONTINUATION SEE LOWER LEFT CORNER

CITY OF LAS VEGAS  
PUBLIC RIGHT-OF-WAY  
APN: 125-21-799-008  
(UNDEVELOPED)

CITY OF LAS VEGAS  
PUBLIC RIGHT-OF-WAY  
APN: 125-21-799-006  
(UNDEVELOPED)



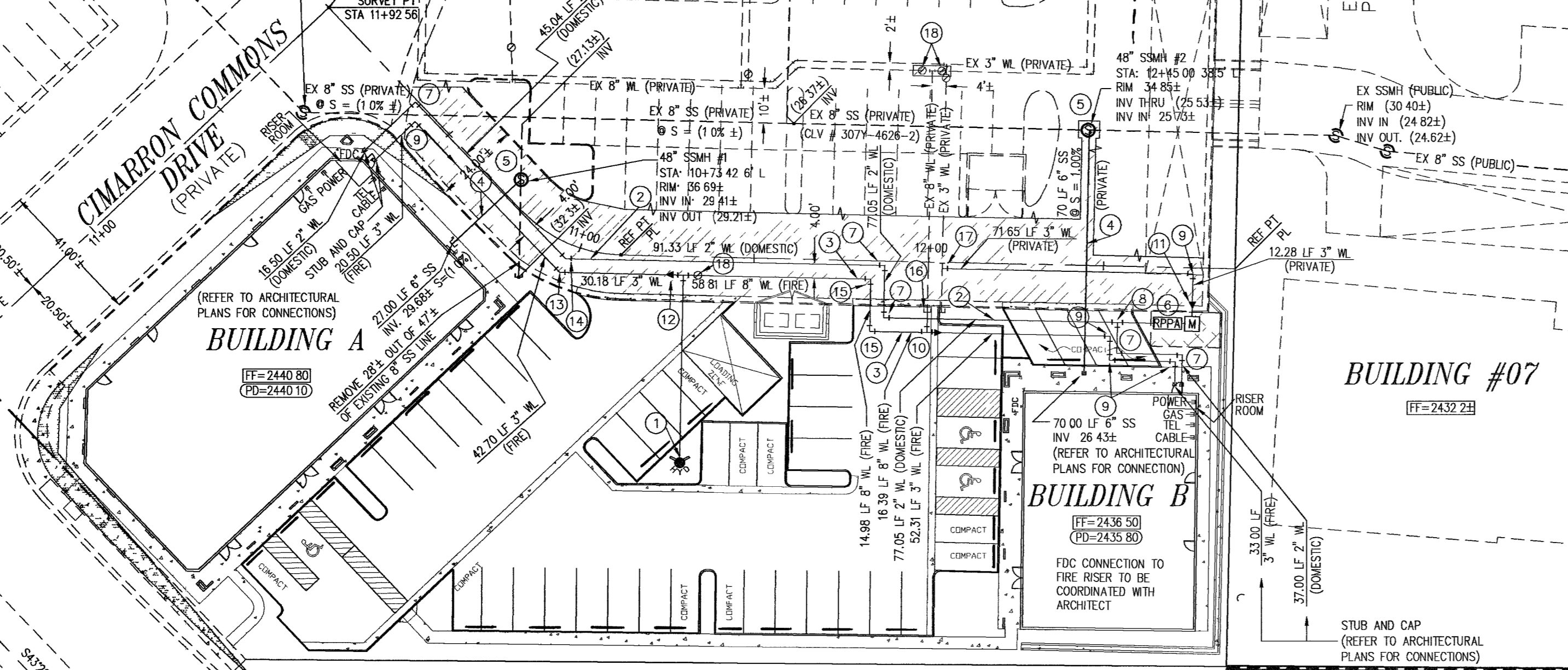
FOR CONTINUATION SEE UPPER LEFT CORNER  
100504

**HAMRICK BUILDING**

FF=2438.74

EXISTING "CIMARRON/SKY POINTE BUSINESS CENTER"  
PLANS BY TKC - CLV DWG#107-V3972

DRY UTILITY CONNECTIONS  
LOCATED IN PARKING LOT  
ON SITE



CENTENNIAL P H D LLC  
APN: 125-21-711-004  
(UNDEVELOPED)

CENTENNIAL P H D LLC  
APN: 125-21-711-005



**UTILITY NOTES**

1. FIRE HYDRANT ASSEMBLY W/6" GATE VALVE PER UDACS PLATE No. 7
2. 2" PVC WATER LINE
3. 8" PVC WATER LINE
4. 6" PVC SEWER MAIN - PRIVATE
5. 48" SANITARY SEWER MANHOLE (DCSWCS SD-1) - PRIVATE
6. 2" WATER METER W/ 2" RPPA PER UDACS PLATE 1D AND 11A
7. 2" WATER LINE 90° BEND
8. 2"x2"x2" WATER LINE TEE
9. 3" WATER LINE 90° BEND
10. 8"x8"x8" WATER LINE TEE
11. 3"x2" WATER LINE REDUCER
12. 8"x3" WATER LINE REDUCER
13. 3" WATER LINE 45° BEND
14. 2" WATER LINE 45° BEND
15. 8" WATER LINE 90° BEND
16. REMOVE CAP AND CONNECT TO EXISTING 8" WATER LINE
17. CUT EXISTING 3" WATER LINE AT STATION 12+04 (2' RIGHT) AND INSTALL 3" 90° WATER LINE BEND. REMOVE REMAINDER OF EXISTING 3" WATER LINE STUB-OUT.
18. 8" GATE VALVE

**SEWER CONTRIBUTION**

PEAK FLOW ..... 0.002275 MGD  
AVERAGE DAILY FLOW ..... 0.006825 MGD

**FIRE FLOW CALCULATIONS**

FIRE FLOW REQUIREMENT IS 1,500 GALLONS PER MINUTE AT 20 PSI RESIDUAL PRESSURE  
BASED ON:  
SQUARE FOOTAGE 7,700 MAX SQUARE FEET  
LARGEST AREA BETWEEN 4-HOUR SEPARATION WALLS N/A  
BUILDING HEIGHT 1-STORY UP TO 26 FEET  
TYPE OF CONSTRUCTION TYPE IBC V-B  
OCCUPANCY COMMERCIAL  
FULL AUTOMATIC FIRE SPRINKLER SYSTEM  YES  NO

REVIEWED BY: *[Signature]* DATE: 2/13/07

**UTILITY NOTES**

1. ALL WATER FACILITIES CONSTRUCTION SHALL BE IN ACCORDANCE WITH THE "UNIFORM DESIGN AND CONSTRUCTION STANDARDS FOR WATER DISTRIBUTION SYSTEMS" (UDACS), LATEST EDITION.
2. FIRE, WATER, AND SEWER SERVICES, AS APPROVED ON THIS PLAN, ARE INTENDED SPECIFICALLY FOR THE LOT AND USE SHOWN, AND ARE NOT INTENDED TO SERVICE ADDITIONAL PARCELS OR STRUCTURES WHICH MAY BE CREATED IN THE FUTURE IN THE EVENT THAT THE PARCELS AND/OR LOTS SHOWN ON THIS PLAN ARE FURTHER DIVIDED TO CREATE ADDITIONAL PARCELS OR LOTS, THE OWNER IS REQUIRED TO PROVIDE SEPARATE FIRE, WATER, & SEWER SERVICES TO EACH.
3. WATER AND SEWER LATERALS SHALL BE INSTALLED A MINIMUM OF 48" APART IN SEPARATE TRENCHES. WATER LATERALS SHALL BE A MINIMUM OF 12" ABOVE THE SEWER LATERAL. (REF. UNIFORM PLUMBING CODE)
4. LOCATOR WIRE SHALL BE USED FOR ALL SERVICE LATERALS NOT PERPENDICULAR TO THE MAIN (TYPICAL)
5. ALL SEWER/STORM DRAINS CROSSING WATER LINES MUST CONFORM TO SECTION 2.19 OF "UNIFORM DESIGN AND CONSTRUCTION STANDARDS FOR WATER DISTRIBUTION SYSTEMS" (UDACS) FOR WATER AND STORM MAIN CROSSINGS AND CLEARANCES.
6. ALL WORK TO BE PERFORMED OUTSIDE OF THE PROJECT BOUNDARY AND ON PRIVATE PROPERTY SHALL NOT BE PERFORMED UNTIL WRITTEN PERMISSION AND EASEMENTS HAVE BEEN OBTAINED FROM THE OFFSITE OWNER AND GIVEN TO CLARK COUNTY.
7. ALL ONSITE STREETS AND DRAINAGE EASEMENTS ARE TO BE PRIVATELY OWNED AND MAINTAINED.
8. ALL UTILITIES ARE TO BE IN CONFORMANCE WITH TITLE 19.12.4040.

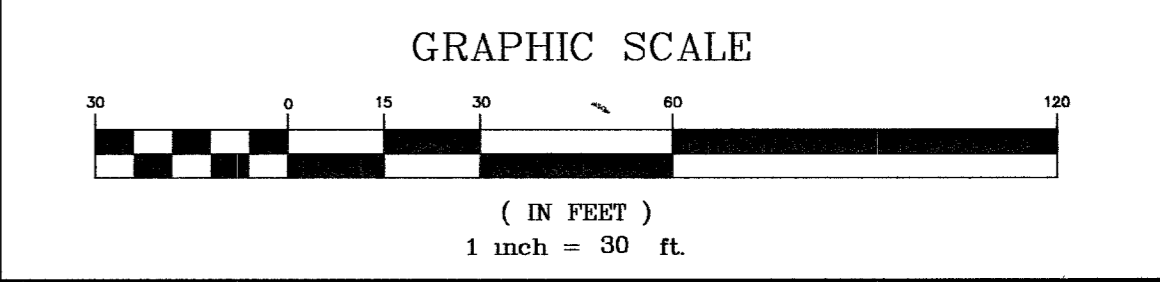
**APPROVAL SIGNATURES**

*[Signature]* 2/13/07  
CITY OF LAS VEGAS FIRE DEPARTMENT  
APPROVAL OF THESE PLANS SHALL NOT BE CONSTRUED TO BE A PERMIT FOR, OR AN APPROVAL OF, VIOLATION OF ANY OF THE PROVISIONS OF THE STATE OR COUNTY LAWS. FIRE FLOW = 1,500 GPM AT 20 PSI RESIDUAL

**LEGEND**

RETAINING WALL	
CMU WALL	
EX WALL	
CENTERLINE	
RIGHT-OF-WAY	
CUT LINE-ASPHALT	
PROPOSED SIDEWALK	
PROPERTY LINE	
EDGE OF PAVEMENT	
SIGHT VISIBILITY ZONE - (NOTHING OVER 24" IN HEIGHT WITHIN SIGHT VISIBILITY ZONE EXCEPT TRAFFIC CONTROL DEVICES)	
REMOVE EXISTING AC PAVE AREA	
2" BLOW OFF VALVE	
WATER LATERAL AND WATER METER	
WATERLINE TEE, CROSS, AND 90° BEND	
GATE VALVE	
FIRE HYDRANT	
EXISTING FIRE HYDRANT	
PROPOSED SEWER LINE	
EXISTING SEWER LINE	
SEWER LATERAL	
PROPOSED WATER LINE	
EXISTING WATER LINE	
WATER LATERAL	
EXISTING POWER POLE	
BACKFLOW PREVENTION DEVICE	

**SCALE**



**BASIS OF BEARINGS**

THE NORTH LINE OF THE NORTHWEST QUARTER (NW 4) OF THE SOUTHEAST QUARTER (SE 4) OF SECTION 21, TOWNSHIP 19 SOUTH, RANGE 60 EAST, M.D.M. BEING NORTH 88°34'19" WEST, AS SHOWN BY MAP THEREON ON FILE IN FILE #4, PAGE 34 OF PARCEL MAPS IN THE CLARK COUNTY, NEVADA RECORDER'S OFFICE.

**BENCHMARK**

NO. 8LV902104 - CITY OF LAS VEGAS RIVET AND ROUND ALUMINUM PLATE IN TOP OF CURB, NORTHEAST CORNER OF DEER SPRINGS WAY AND CIMARRON ROAD - 747.010m/2450.815ft (NAVD 88 DATUM)

**LEGAL DESCRIPTION**

PORTION OF LOT 1 OF CIMARRON SPRINGS RANCH PARCEL 2 AS SHOWN IN BOOK 93, PAGE 59 OF PLATS IN THE OFFICE OF THE CLARK COUNTY NEVADA RECORDER, LYING WITHIN THE NORTHWEST QUARTER OF THE SOUTHWEST QUARTER OF SECTION 21, TOWNSHIP 19 SOUTH, RANGE 60 EAST, M.D.M. CLARK COUNTY, NEVADA

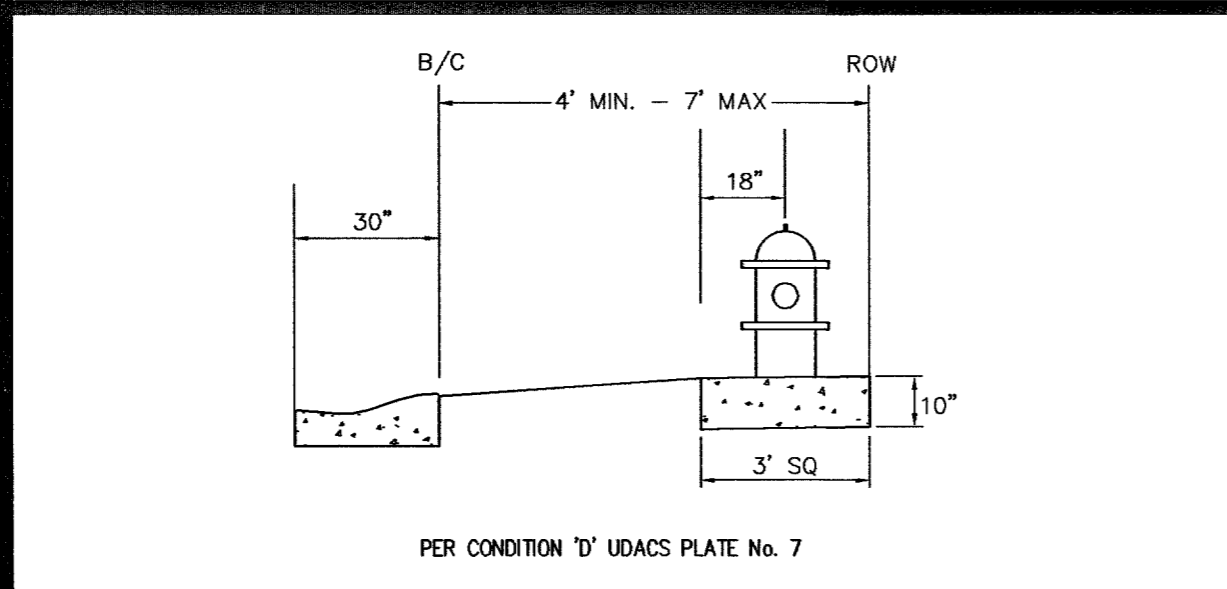
**ABBREVIATIONS**

AC	ASPHALTIC CONCRETE	MH	MANHOLE
BC	BACK OF CURB	MIN	MINIMUM
BCR	BACK OF CURB RADIUS	NIS	NOT TO SCALE
BM	BENCHMARK	OC	ON CENTER
BVC	BEGIN VERTICAL CURVE	PB	PULL BOX
BW	BOTTOM OF WALL	PC	POINT OF CURVE
CATV	CABLE TELEVISION	PCC	POINT OF COMPOUND CURVE
CC	CLARK COUNTY	PI	POINT OF INTERSECTION
CL	CENTERLINE	PL	PROPERTY LINE
CLV	CITY OF LAS VEGAS	PP	POWER POLE
CNLV	CITY OF NORTH LAS VEGAS	PRC	POINT OF REVERSE CURVE
CO	CLEAN OUT	PT	POINT OF TANGENCY
CY	CUBIC YARD	R	RADIUS
DG	DESIGN GRADE	RCP	REINFORCED CONCRETE PIPE
DI	DROP INLET	ROW	RIGHT-OF-WAY
EC	END OF CURVE	RT	RIGHT
EP	EDGE OF PAVEMENT	SD	STORM DRAIN
EVC	END VERTICAL CURVE	STL	STREETLIGHT
EX	EXISTING	SS	SANITARY SEWER
FF	FINISH FLOOR ELEVATION	STA	STATION
FG	FINISH GRADE	STD	STANDARD
FH	FIRE HYDRANT	SVZ	SIGHT VISIBILITY ZONE
FL	FLOW LINE	SW	SIDEWALK
FT	FEET	TC	TOP OF CURB
GB	GRADE BREAK	TW	TOP OF WALL
HP	HIGH POINT	TR	TYPICAL
INV	INVERT	VC	VERTICAL CURVE
LF	LINEAR FEET	VCP	VITRIFIED CLAY PIPE
LFF	LOWER FINISH FLOOR ELEVATION	VG	VALLEY GUTTER
MAX	MAXIMUM	W	WATER

**JURISDICTION**

CITY OF LAS VEGAS 107V4817

**FIRE HYDRANT DETAIL**



**WATER MAIN JOINT DEFLECTION (PVC, 4" - 24")**

PVC PIPE SHALL BE DEFLECTED AT THE JOINT ONLY. THE MAXIMUM ALLOWABLE DEFLECTION SHALL BE ONE (1) DEGREE PER JOINT WITH A MAXIMUM RADIUS OF CURVATURE OF 1,150 FEET, PER UDACS 2.06.01 AND 2.06.02.  
FOR CHANGES IN DIRECTION EXCEEDING THE MAXIMUM ALLOWABLE JOINT DEFLECTION, FITTING SHALL BE USED

**NOTE**

INSTALL PIPELINE MARKER BALLS IN TRENCH ABOVE EACH HORIZONTAL ELBOW FITTING, PER UDACS PLATE NO. 27

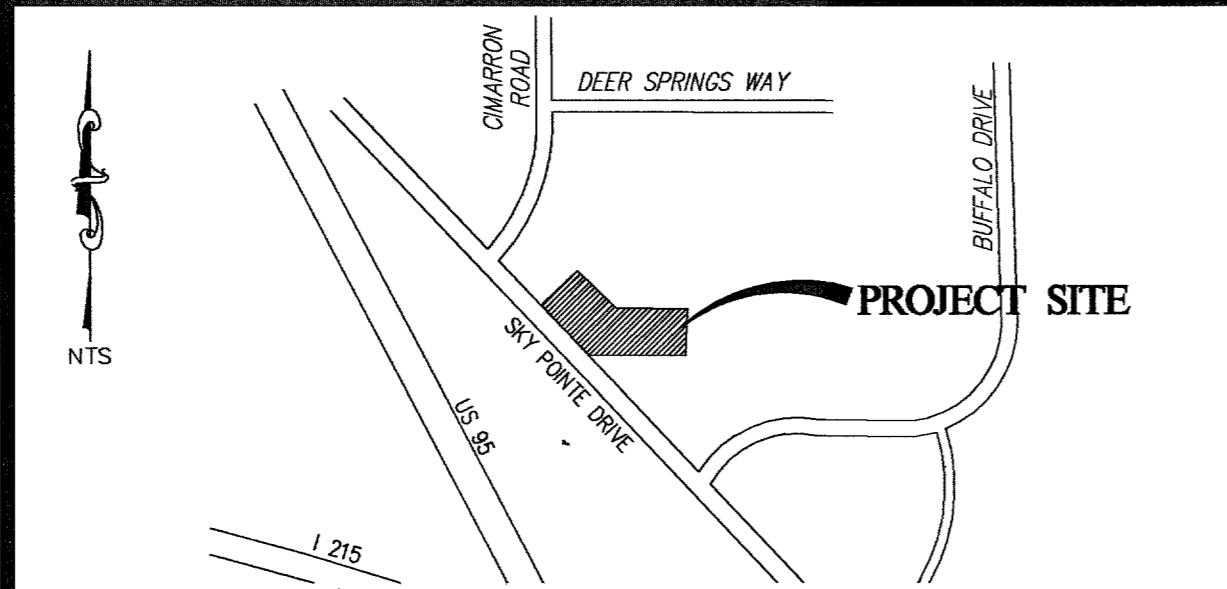
**SEWER NOTE**

ALL SEWER/STORM DRAINS CROSSING WATER LINES MUST CONFORM TO SECTION 2.19 OF THE UNIFORM DESIGN AND CONSTRUCTION STANDARDS FOR PORTABLE WATER SYSTEMS (UDACS) FOR WATER AND STORM MAIN CROSSINGS AND CLEARANCES.

**UTILITY DISCLAIMER NOTE**

EXISTING UTILITY LOCATIONS SHOWN HEREIN ARE APPROXIMATE ONLY. IT SHALL BE THE CONTRACTORS RESPONSIBILITY TO DETERMINE THE EXACT VERTICAL AND HORIZONTAL LOCATION OF ALL EXISTING UNDERGROUND UTILITIES PRIOR TO COMMENCING CONSTRUCTION. NO REPRESENTATION IS MADE THAT ALL EXISTING UTILITIES ARE SHOWN HEREON. THE ENGINEER ASSUMES NO RESPONSIBILITY FOR UTILITIES NOT SHOWN OR UTILITIES NOT SHOWN IN THEIR PROPER LOCATIONS.  
CALL BEFORE YOU DIG: 1-800-227-2600  
CALL BEFORE YOU OVERHEAD: 1-702-227-2929

**VICINITY MAP**



**REVISIONS**

NO.	DESCRIPTION	BY	DATE	APPR.

**UTILITY PLAN**

**CIMARRON COMMONS, LLC**  
12 SUNSHINE COUNTRY PLANE  
LAS VEGAS, NV 89166  
(702) 939-2468 FAX: (702) 939-2415

**TANEY ENGINEERING**  
4445 S. JONES BLVD., SUITE #1  
LAS VEGAS, NV 89103  
(702) 362-8844 FAX: (702) 362-5233

**CIMARRON COMMONS**  
A COMMERCIAL SUBDIVISION

**ENGINEER'S SEAL**  
*[Signature]*  
ROBERT CUNNINGHAM  
Exp. 12-31-08  
CIVIL  
No. 15729  
2/13/07

DATE: 12-21-06  
SCALE: 1"=30'  
JOB NO: CMR-06-001  
DESIGNED BY: SCF  
DRAWN BY: EL  
SHEET NAME: UT1  
SHEET: 5 OF 6