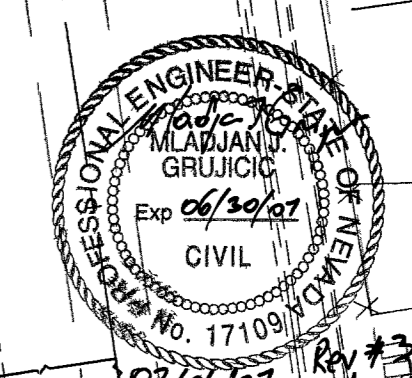
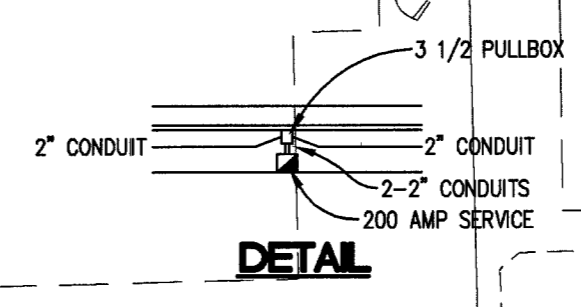


- 200 AMP 240V PAD MOUNT SERVICE WITH
- 2 2 POLE 60 AMP CIRCUIT BREAKERS
 - 1 POLE 15 AMP CIRCUIT BREAKERS
 - 0 1 POLE 40 AMP CIRCUIT BREAKERS
 - 0 1 POLE 60 AMP CIRCUIT BREAKERS
 - 2 2 POLE 60 AMP CONTRACTORS
 - BY PASS SWITCH PER CONTRACTOR



NO.	DATE	BY	DESCRIPTION
1	11-07-07	JG	LOWEED STREET ELEVATIONS
2	9-12-06	SG	2" RISE FF FOR 6" WATER
3	9-22-06	W	REVISED WATERLINE

D.R. HORTON
 6845 ESCONDIDO STREET BLDG #6, SUITE 105
 LAS VEGAS, NV 89119
 PHONE (702) 435-4888 FAX: (702) 638-4700

Lone Mountain Engineering
 6245 S. JONES BLVD., SUITE 200
 LAS VEGAS, NEVADA 89118
 PHONE (702) 312-5530 FAX: (702) 320-1769

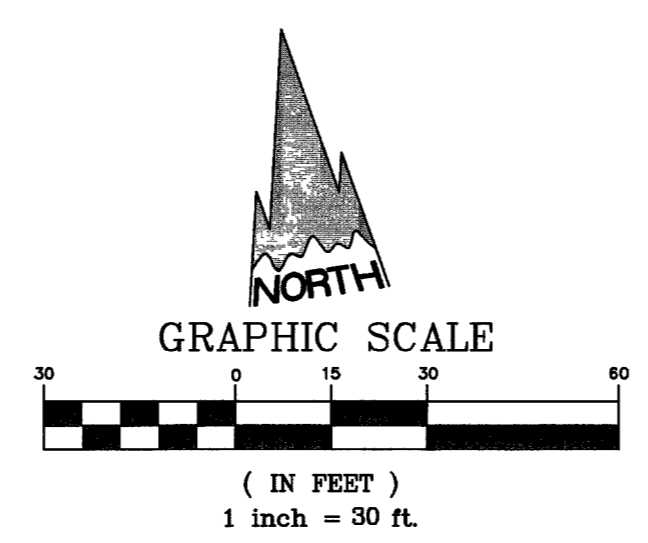
UTILITY/STREETLIGHT PLAN
SHEET 03

BAVARIA ESTATES

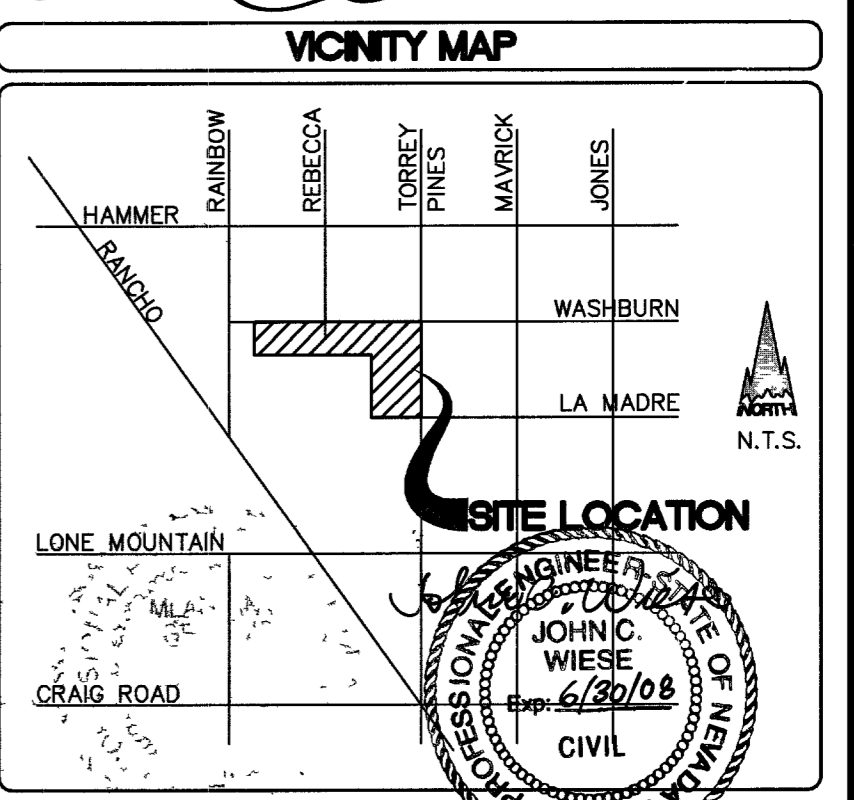
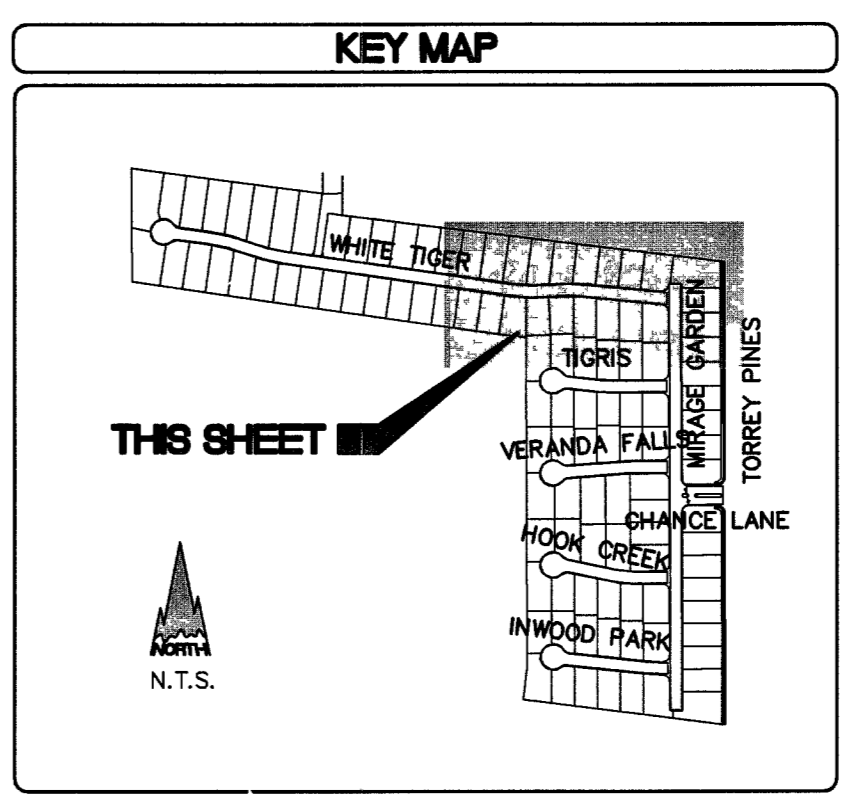
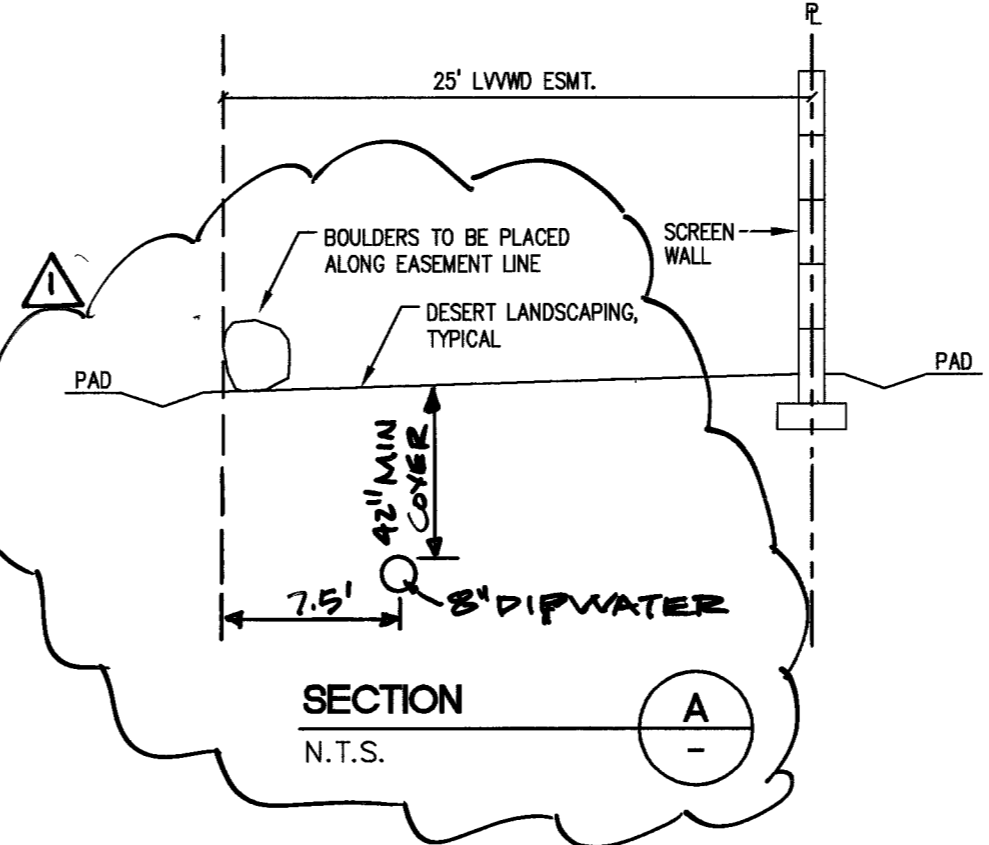
UTILITY LEGEND

BOUNDARY	10+00	PRESSURE REDUCING VALVE	PRV
CENTER LINE & STATION	+	FIRE HYDRANT	⊕
RIGHT-OF-WAY	---	2" BLOW-OFF	⊕
LOT LINE	---	GATE VALVE	⊕
WATER MAIN	8" W	WATER METER	⊕
WATER LATERAL	EX 8" W	PIPE FITTINGS	⊕
EXISTING WATER MAIN	EX 8" W	SEWER MANHOLE	⊕
EXISTING GAS MAIN	EX GAS	STORM DRAIN MANHOLE	⊕
SEWER MAIN	8" SS	100W STREET LIGHT	⊕
SEWER LATERAL	EX 8" SS	150W STREET LIGHT	⊕
EXISTING SEWER MAIN	EX 8" SS	200W STREET LIGHT	⊕
STORM DRAIN MAIN	36" RCP	400W STREET LIGHT	⊕
STORM DRAIN LATERAL	18" RCP	EXISTING STREETLIGHT	⊕
EXISTING STORM DRAIN	EX 36" SD	EX SL CONDUIT	⊕
BACK OF CURB	---	STREETLIGHT SERVICE POINT	⊕
FACE OF CURB	---	SIDEWALK	---
LIP OF GUTTER	---	EXISTING CURB	---
EDGE OF PAVEMENT	---	EDGE OF EXISTING PWT	---

- WATER FITTING LEGEND**
- ① 8" x 8" TEE
 - ② 8" GATE VALVE
 - ③ 6" FIRE HYDRANT ASSY. PER UDACS STD. PLATE 7 (INCLUDE GATE VALVE, TEE & LATERAL)
 - ④ 2" BLOW-OFF ASSY. W/CAP PER UDACS STD. PLATE 4A
 - ⑤ 6" - 1 1/2" BEND
 - ⑥ 8" x 6" REDUCER
 - ⑦ 3/4" METER-PER UDACS STD. PLATE NO. 1D
 - ⑧ 1" METER-PER UDACS STD. PLATE NO. 1D (IRR.) W/ 1" RPPA PER UDACS PLATE # 11A
 - ⑨ INSTALL (2) 4" SCH. 40 IRRIGATION SLEEVES
 - ⑩ 2 1/2" x 8" TAPPING SLEEVE W/ 8" TAPPING VALVE
 - ⑪ 8" x 8" TAPPING SLEEVE W/ 8" TAPPING VALVE
 - ⑫ 6" GATE VALVE
 - ⑬ 10" x 8" MJ TAPPING SLEEVE W/ 8" TAPPING VALVE
 - ⑭ 1" METER PER UDACS STD. PLATE NO. 1D
 - ⑮ 8" - 5" BEND RESTRAINED
 - ⑯ 8" - 1 1/2" BEND
 - ⑰ 8" - 45° BEND
 - ⑱ 8" - 90° BEND



PRIVATE STREET NOTE
 ALL PRIVATE STREETS ARE P.U.E.'S. CLV PUBLIC SEWER EASEMENTS AND PUBLIC DRAINAGE EASEMENTS TO BE PRIVATELY MAINTAINED.



Call before you Dig
 1-800-227-2600
 UNDERGROUND UTILITY LOCATIONS

Call before you Dig
 1-702-455-7511
 CLARK COUNTY TRAFFIC OPERATIONS

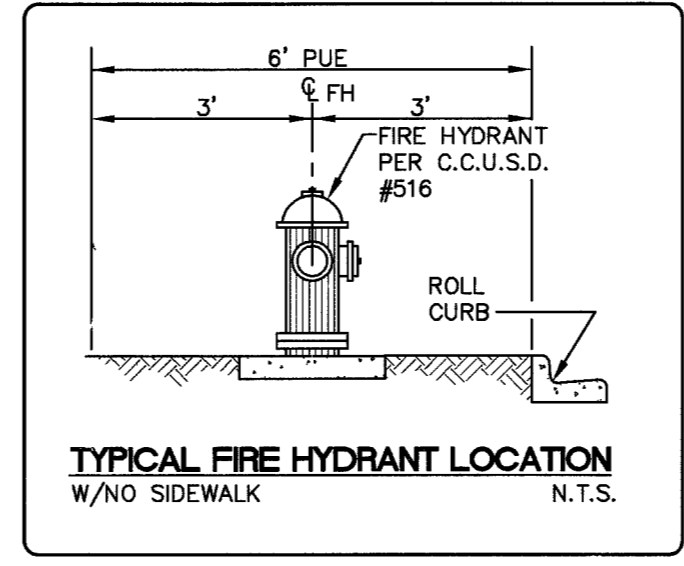
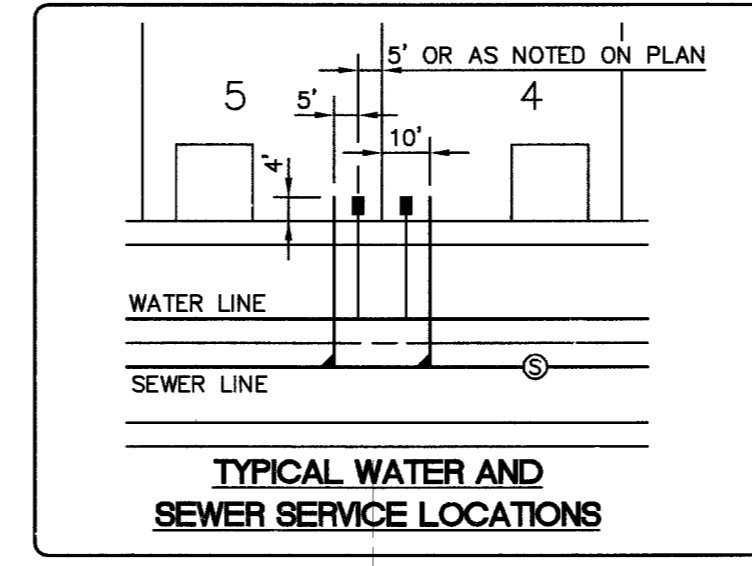
Call before you Dig
 1-702-229-6611
 LAS VEGAS AREA COMPUTERIZED TRAFFIC SYSTEM

NOTES

ABANDONED VALVE CUT AND CAP
 ALL VALVES TO BE ABANDONED SHALL BE ABANDONED IN THE CLOSED POSITION, UNLESS SHOWN OTHERWISE, BY REMOVING A MINIMUM OF THE TOP TWENTY-FOUR (24) INCHES OF THE VALVE BOX, AND THEN FILING THE BOTTOM OF THE BOX WITH A MINIMUM OF EIGHT (8) INCHES OF SAND OR TYPE 1 AGGREGATE BASE. THE REMAINING PORTION OF THE VALVE BOX SHALL BE FILLED WITH CONCRETE HAVING A COMPRESSIVE STRENGTH OF AT LEAST TWO THOUSAND (2,000) PSI. THE LATERAL MUST BE CUT WITHIN THREE (3) FEET OF THE ABANDONED VALVE, OR AS SHOWN ON PLANS, AND CAPPED. THE CONTRACTOR SHALL CUT THE EXISTING PIPE WHERE SHOWN ON THE DRAWING, AND INSTALL A CAP COMPLETE WITH THURST BLOCK. WHERE A JOINT OR COUPLING IN THE EXISTING PIPE IS UNCOVERED AT THE CUT AND CAP LOCATIONS, THE INSTALLATION OF A PLUG MAY BE PERMITTED WITH DISTRICT APPROVAL. A CONCRETE THURST BLOCK SHALL BE INSTALLED AT ALL CAP OR PLUG LOCATIONS, IN ACCORDANCE WITH THE PROVISIONS OF UDACS PLATE 5.

SEWER CONTRIBUTION

0.028 MGD AVERAGE DAILY FLOW
 0.095 MGD PEAK FLOW



BASIS OF BEARINGS
 THE EAST LINE OF THE SOUTHWEST QUARTER (SW 1/4) OF SECTION 35, TOWNSHIP 19 SOUTH, RANGE 60 EAST, M.D.M., CLARK COUNTY, NEVADA, AS SHOWN BY THAT RECORD OF SURVEY ON FILE IN FILE 40 OF SURVEYS, PAGE 74 IN THE CLARK COUNTY RECORDER'S OFFICE, CLARK COUNTY, NEVADA.

SAID LINE BEARS SOUTH 00°08'24" EAST.

BENCHMARK
 CLV BM 0LV90 35S4 BEING A RIVET & PLATE IN TOP OF CURB 60 FT NORTH OF LONE MOUNTAIN ON EAST CURB OF TORREY PINES.

ELEVATION: 2301.17 FEET/701.3985 METERS (NAVD '88 DATUM)

APPROVALS

APPROVAL: [Signature] DATE: 5/26/06

CITY OF LAS VEGAS FIRE DEPARTMENT

APPROVED FOR CONSTRUCTION: [Signature] DATE: 6-01-06

LAS VEGAS VALLEY WATER DISTRICT PROJECT #111386

PROFESSIONAL ENGINEER - STATE OF NEVADA
 JOHN C. WIESE
 No. 11256
 Exp. 6/30/08
 CIVIL

DATE: 6/25/06

SHEET No. **10** OF 28
 10744934