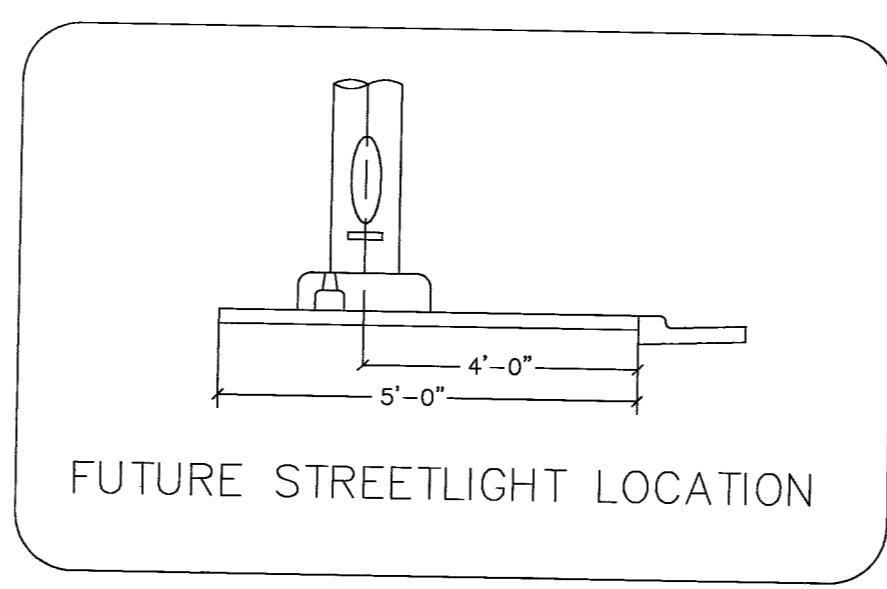
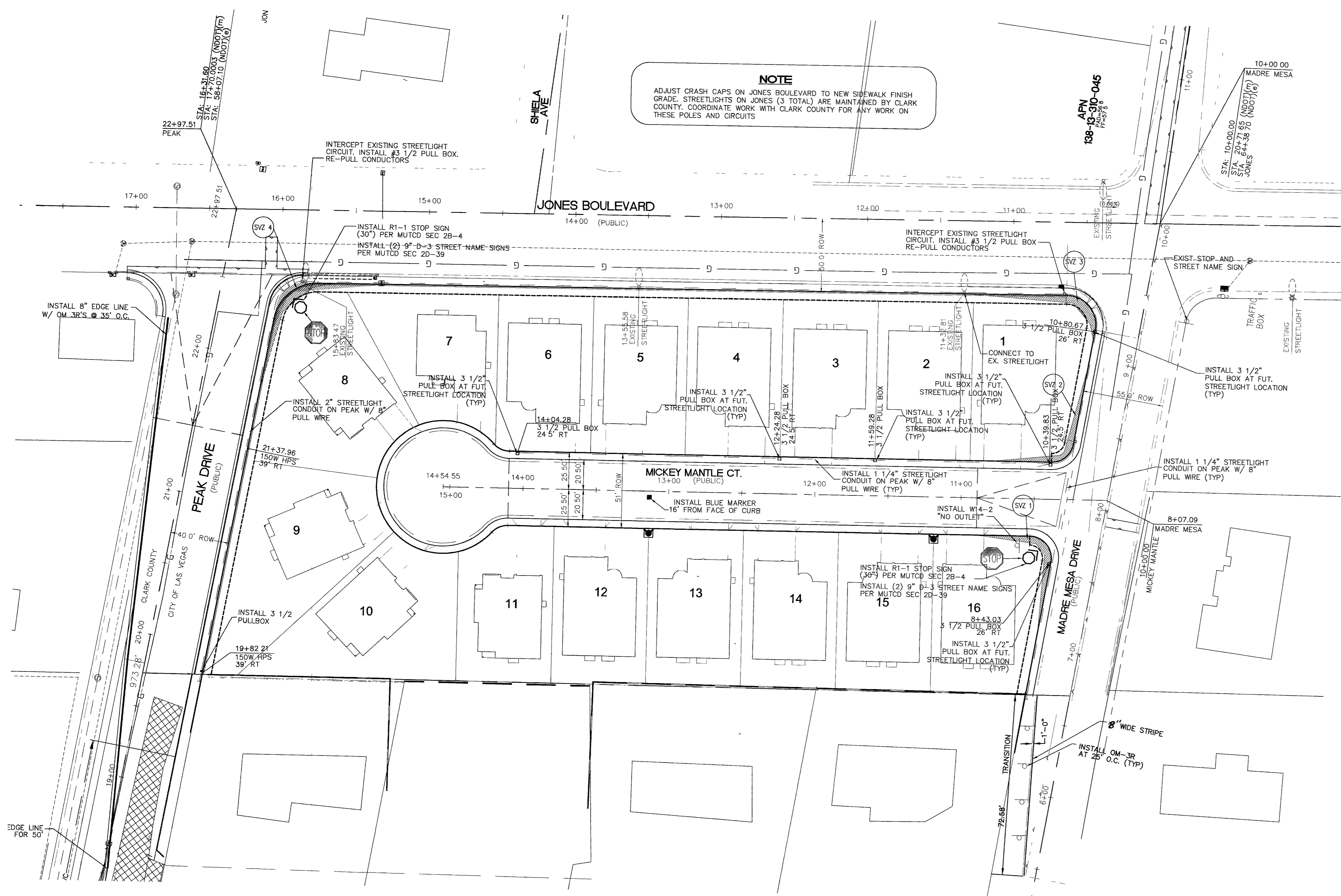


- CONSTRUCTION NOTES**
1. INSTALL R1-1 STOP SIGN (30") PER MUTCD SEC 2B-4
 2. INSTALL (2) 9" D-3 STREET NAME SIGNS PER MUTCD SEC 2D-39
 3. INSTALL BLUE MARKER 16" FROM FACE OF CURB
 4. INSTALL SIGNS AS SPECIFIED

- TRAFFIC QUANTITY ESTIMATE**
- | | |
|------------------------|--------|
| 2) 9" D-3 SIGNS | 2 - EA |
| STOP SIGN | 2 - EA |
| BLUE REFLECTIVE MARKER | 1 - EA |
| SIGN AS SPECIFIED | 1 - EA |

- LEGEND**
- 9" D-3 STREET NAME SIGN PER USD 250
 - 30"/30" STOP SIGN R1-1
 - R2-1 SPEED LIMIT (25 MPH) SIGN
 - SIGHT VISIBILITY ZONE
 - NO WALLS, FENCES, TREES, SHRUBS, UTILITY APPURTENANCES OR ANY OTHER OBJECT, OTHER THAN TRAFFIC CONTROL DEVICES AND STREET LIGHT POLES, MAY BE CONSTRUCTED OR INSTALLED WITHIN THE SIGHT VISIBILITY ZONE UNLESS SAID OBJECT IS MAINTAINED AT LESS THAN 24" INCHES IN HEIGHT, MEASURED FROM TOP OF CURB, WHERE NO CURB EXISTS, A HEIGHT OF 27" INCHES MEASURED FROM THE TOP OF ADJACENT ASPHALT, GRAVEL OR PAVEMENT STREET SURFACES. SEE SHEET 5 FOR DETAILS.
 - STREET LIGHT CONDUIT
 - 150W STREET LIGHT
 - 150W STREET LIGHT
 - STREET LIGHT PULLBOX

NOTE
ADJUST CRASH CAPS ON JONES BOULEVARD TO NEW SIDEWALK FINISH GRADE. STREETLIGHTS ON JONES (3 TOTAL) ARE MAINTAINED BY CLARK COUNTY. COORDINATE WORK WITH CLARK COUNTY FOR ANY WORK ON THESE POLES AND CIRCUITS



BASIS OF BEARING
(PER STANLEY CONSULTANTS LTD)
NORTH 06°56'42" WEST, BEING THE EAST LINE OF THE SOUTH HALF (S1/2) OF THE NORTHEAST QUARTER (NE 1/4) OF SECTION 14, TOWNSHIP 20 SOUTH, RANGE 60 EAST, M.D.M., CLARK COUNTY, NEVADA, AS SHOWN BY THAT MAP ON FILE IN THE RECORDER'S OFFICE, CLARK COUNTY, NEVADA, IN FILE 83, PAGE 64 OF PARCEL MAPS.

BENCHMARK
(PER TRC-BV ENGINEERING NEVADA)
PROJECT DATUM: NORTH AMERICAN VERTICAL DATUM OF 1988 (NAVD88)
CITY OF LAS VEGAS BENCHMARK: #725, 6LV00 14S6E
ELEVATION: 694.8878 METERS (2279.81 FEET)
RIVET & PLATE IN TOP OF CURB ON THE WEST SIDE OF MAVERICK STREET @ CARTIER

CALL BEFORE UNDERGROUND
AVOID HITTING UNDERGROUND TRAFFIC SIGNAL SYSTEMS AND STREET LIGHT SYSTEM CONDUITS AND STREET LIGHTS COSTLY.

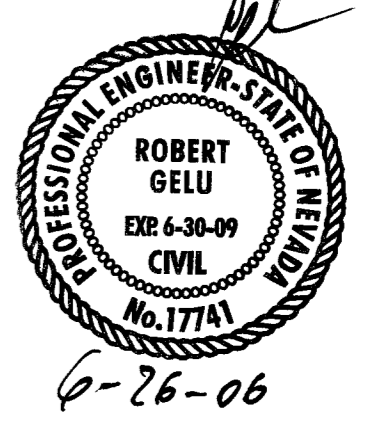
Call before you UnderGround

1-702-455-7511
CLARK COUNTY TRAFFIC OPERATIONS
1-702-229-0611
LAS VEGAS, NV 89102

Avoid hitting overhead power lines. It's costly. Avoid cutting underground utility lines. It's costly.

Call before you Overhead **Call before you Dig.**

1-702-227-2929 1-800-227-2600
UNDERGROUND SERVICE ALERT (USA)



Civil Engineering Division
Clark County Development Services
ACCEPTED
By: *M. Alan* Date: 7-15-06
ACCEPTANCE OF THESE PLANS SHALL NOT BE CONSTRUED TO BE A PERMIT FOR OR AN APPROVAL OF ANY VIOLATION OF STATE, COUNTY OR FEDERAL LAW SPECIFICATIONS OR THE MANUAL ON UNIFORM TRAFFIC CONTROL DEVICES.

DESIGNED BY:	RG				
DRAWN BY:	J.Clark				
CHECKED BY:	AH				
Copyright SUMMIT ENG 2005					
NEVADA					
CLARK COUNTY					
LAS VEGAS					
REV.	DATE	DESCRIPTION	BY	APP'D	
SHEET	SCALE	HORIZ:	N/A	VERT:	N/A
14					
of					
15					
JOB NO: 75031		P:\DWGSET\75031\8881\75031TRF.DWG - 7:48 AM * 10-NOV-2005			