

This document, including the ideas and designs it contains, is an instrument of professional services rendered by the WESTNAD Architectural Group/Neovada, Inc. / Engineer. This document may not be used or copied in whole, or in part, for any purpose other than the specific project without the expressed written consent of WestnAD Architectural Group/Neovada, Inc.

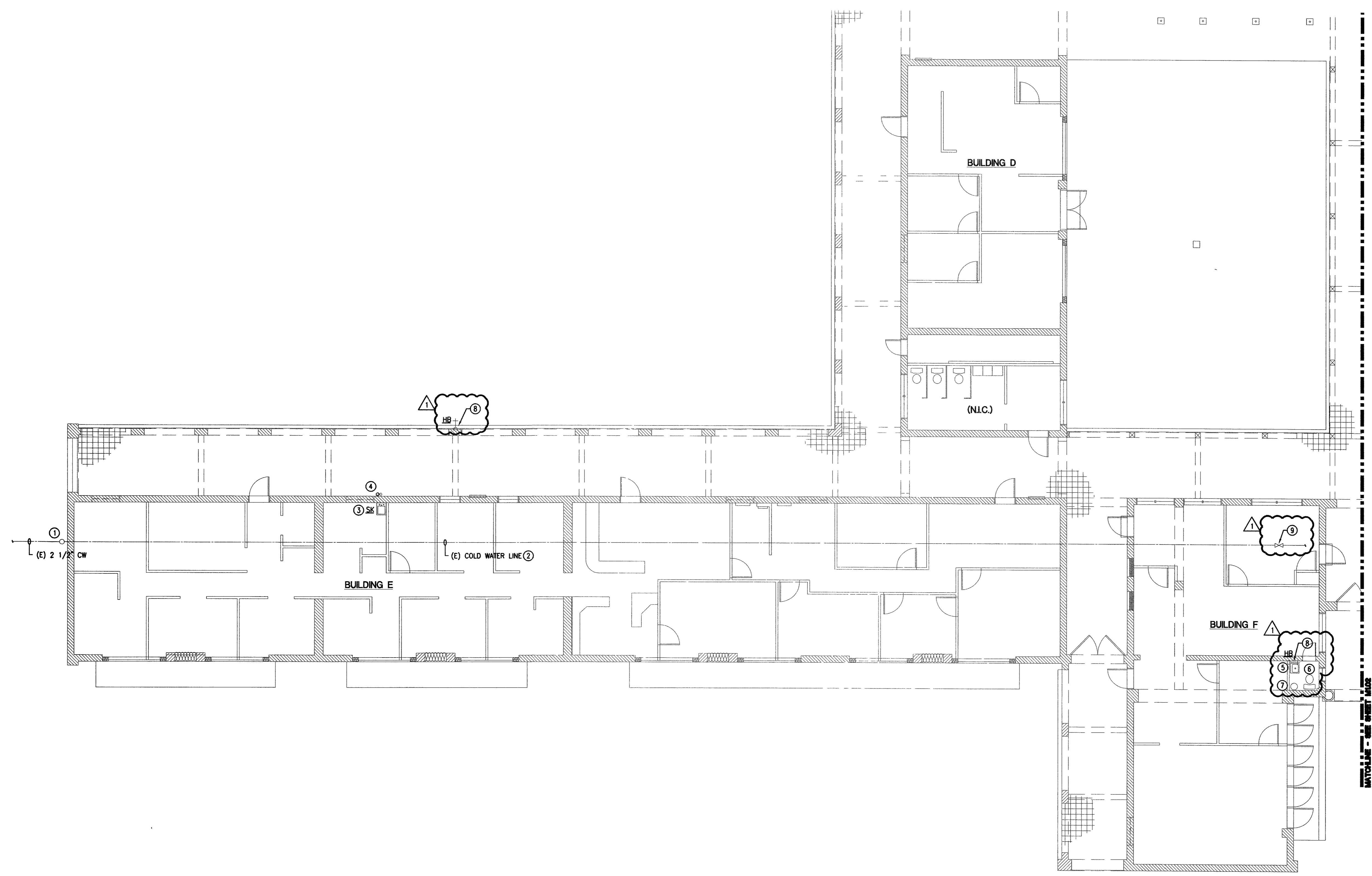
PROJECT NUMBER 04488	DATE 8/11/05
REVISION DESCRIPTION RECORD DOCUMENTS	
PROJECT BY CER	
FORWARDED BY AJ	
ISSUE DATE Dec. 07, 2005	
SCALE AS SHOWN	
SHEET NUMBER P1.01	

**GENERAL NOTES**

1. VERIFY ALL EXISTING FIELD CONDITIONS, PRIOR TO BIDDING.
2. REMOVE ALL EQUIPMENT NOTED. DO NOT ABANDON IN PLACE. ANY DUCTWORK, PIPING, CONTROLS, ETC.

**KEY NOTES**

- ① EXISTING 2 1/2" CW VERTICAL RISER TO REMAIN WITH EXISTING INSULATION.
- ② EXISTING COLD WATER LINE IN THE ATTIC TO REMAIN THROUGHOUT WITH ALL ASSOCIATED BRANCHES AND TEE'S.
- ③ EXISTING KITCHEN SINK TO BE REMOVED. CAP SS, VENT & CW IN THE WALL FOR FUTURE USE.
- ④ EXISTING EXPOSED VENT LINE TO BE REMOVED.
- ⑤ EXISTING LAV TO BE REMOVED. CAP SS, VENT & CW/HW FOR FUTURE USE.
- ⑥ EXISTING WATER CLOSET (WC) TO BE REMOVED. CAP SS, VENT & CW IN THE WALL/FLOOR FOR FUTURE USE.
- ⑦ EXISTING LOWBOY WATER HEATER (AMERICAN WATER HEATER-PROLINE) TO BE REMOVED WITH ALL ASSOCIATED PLUMBING PIPING.
- ⑧ REINSTALLED HOSE BIBB FOR DEMO.
- ⑨ SHUT OFF VALVE IN ATTIC.



**PLUMBING DEMOLITION PLAN - BUILDINGS "D", "E" & "F"**

SCALE: 1/8" = 1'-0"

96394

