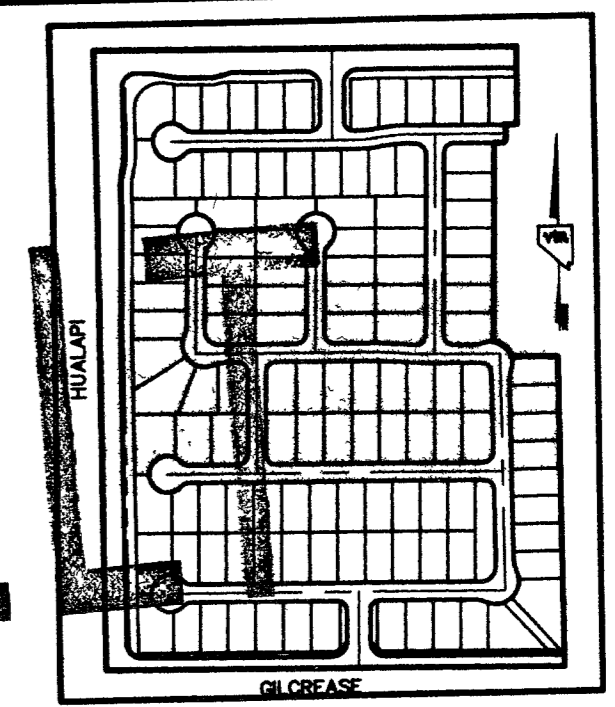
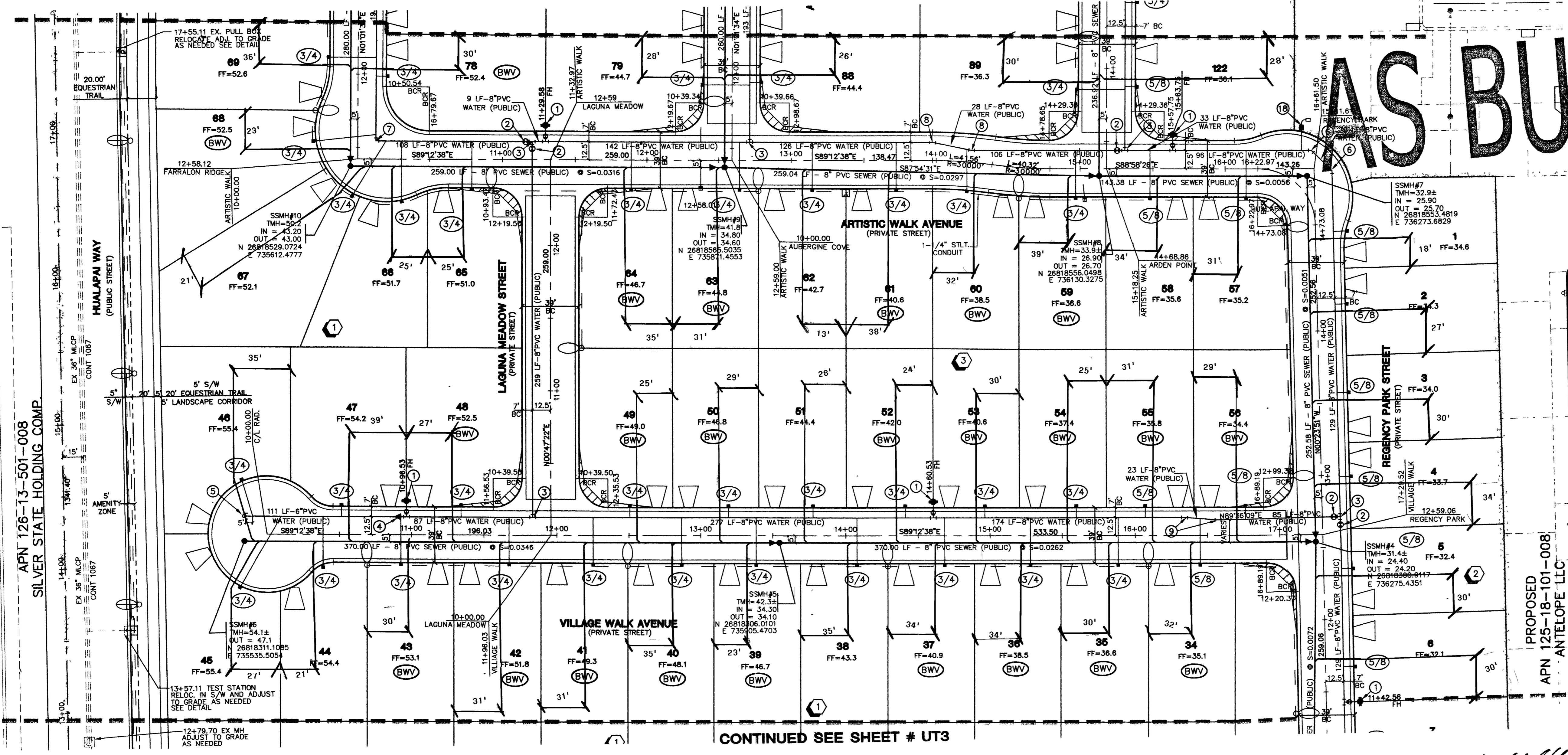


CONTINUED SEE SHEET # UT1

AS BUILT



KEY MAP
N.T.S.
GRAPHIC SCALE
1" = 40'



CONTINUED SEE SHEET # UT3

Call before you Dig
1-800-227-2600

Call before you Underground
1-702-455-7511
CLARK COUNTY TRAFFIC OPERATIONS

Call before you Overhead
1-702-229-0611
LAS VEGAS AREA COMPUTERIZED TRAFFIC SYSTEM

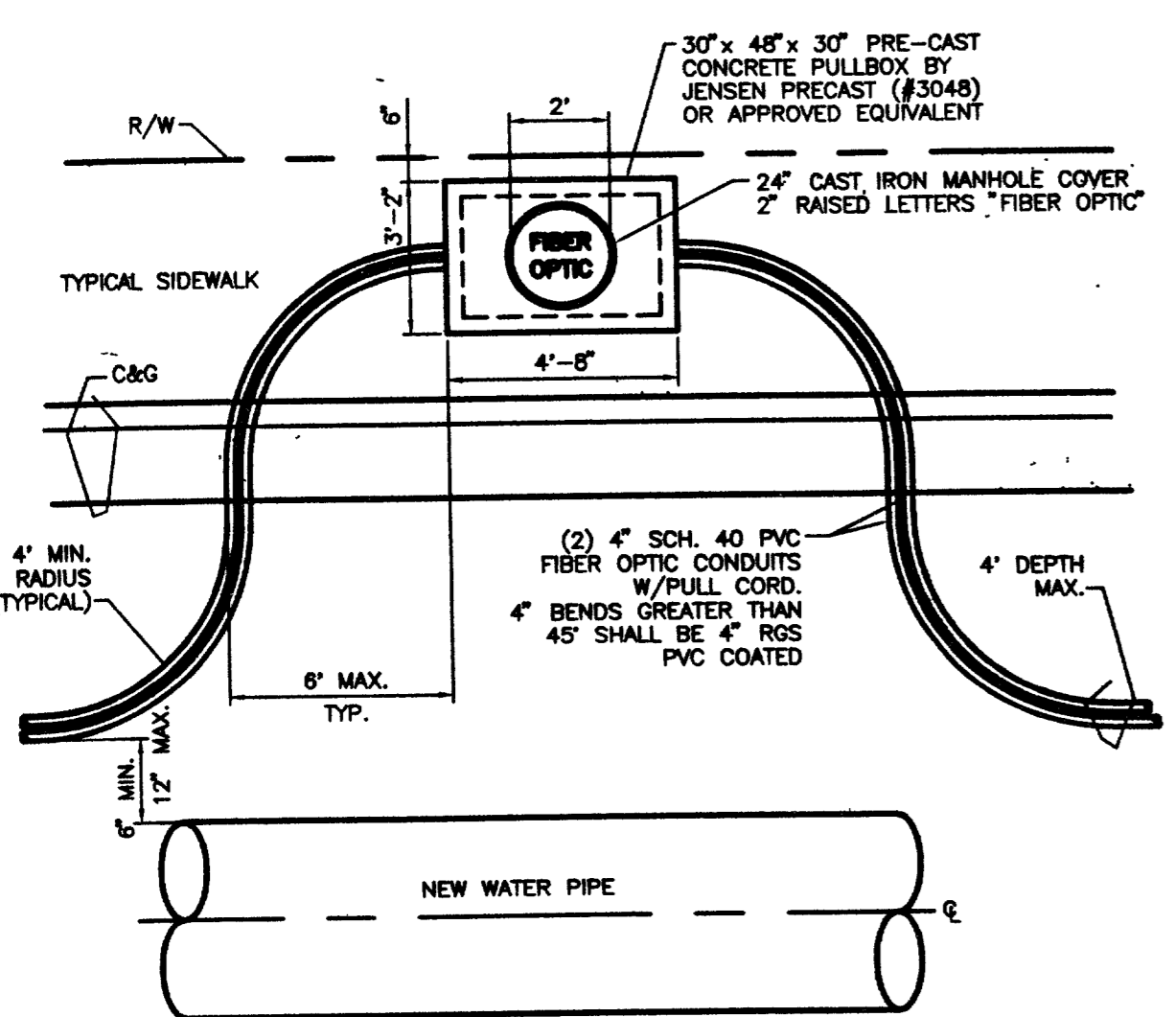
Avoid utility encroachment. Traffic signal system and street light system controls are buried underground. Call before you dig. Call before you underground. Avoid overhead power line contact. It's costly.

SEWER NOTE:
MANHOLE STATIONING IS BASED ON SEWER LENGTHS FROM MANHOLE TO TO MANHOLE. ALL MANHOLES ARE 48" SIZED MANHOLES PER STD.DWG# SD-1.

FOR ALL UTILITY NOTES, SEE GENERAL NOTE SHEET # C3, LEGEND/QUANTITIES SEE UT1

PRIVATE STREET NOTE:
ALL PRIVATE STREETS ARE P.U.E.'S, PUBLIC SEWER EASEMENT AND PUBLIC DRAINAGE EASEMENTS TO BE PRIVATELY MAINTAINED BY H.O.A.

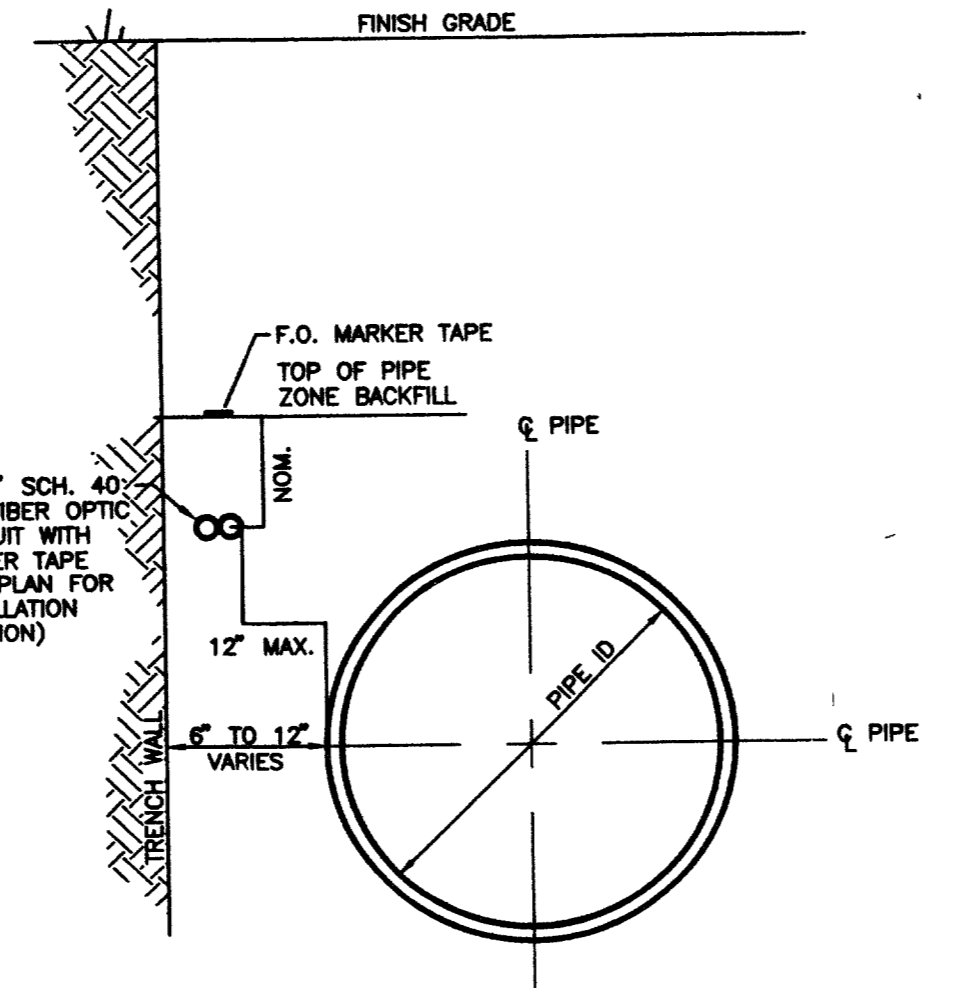
[Signature]
CLV FIRE MARSHAL
12.17.03



NOTE: PLAN

- ENTIRE PULL BOX AND CONDUIT INSTALLATION SHALL BE CLEAN AND DRY AT TIME OF ACCEPTANCE
- PULL BOX BED AND BACKFILL AROUND BOX TO BE TYPE II AGGREGATE BASE (208.02.04) COMPACTED TO BOX DENSITY
- ELEVATION OF PULL BOX TO BE 4" ABOVE EXISTING (NATURAL) GRADE, OR FLUSH WITH SIDEWALK

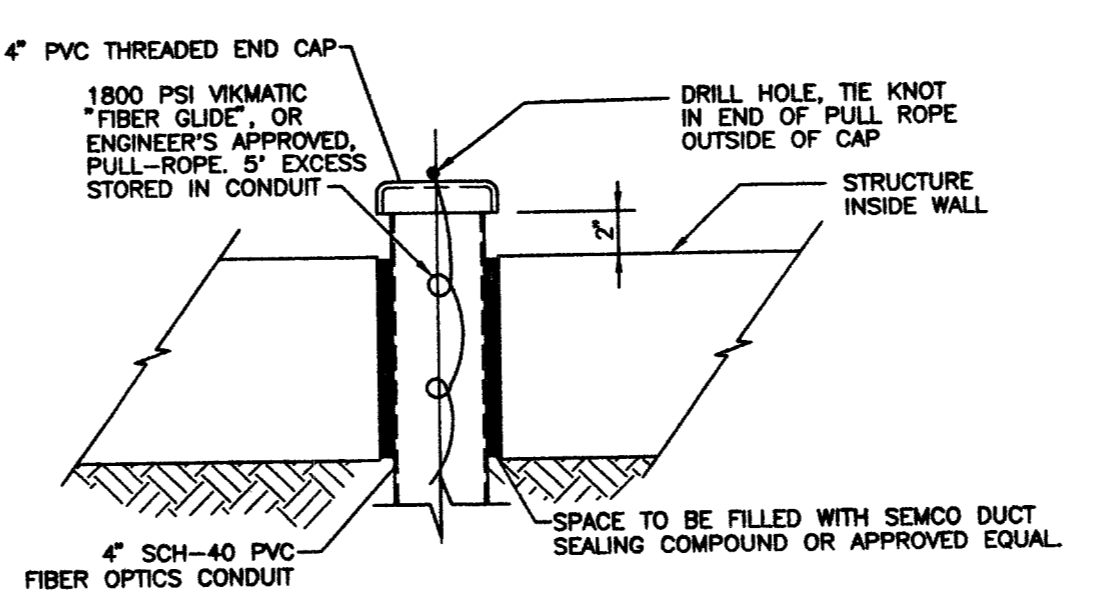
FIBER OPTIC PULL BOX
NOT TO SCALE



NOTE:

- CHANGES IN DIRECTION OF THE FIBER OPTIC CONDUIT BY MORE THAN 10° (DEGREES) HORIZONTALLY OR VERTICALLY SHALL BE ACCOMPLISHED USING BENDS WITH A MINIMUM RADIUS OF 24 TIMES THE CONDUIT DIAMETER.
- FOR ADDITIONAL TRENCH BACKFILL REQUIREMENTS SEE 8/01

FIBER OPTIC CONDUIT LOCATION
NOT TO SCALE



FIBER OPTICS CONDUIT TERMINATION
NOT TO SCALE

PROJECT BENCHMARK
PROJECT DATUM: NORTH AMERICAN VERTICAL DATUM OF 1988 (NAVD88)
CITY OF LAS VEGAS BENCHMARK: 0090179S
ELEVATION: 799.057 METERS (2,621.67 FEET)
RIVET AND SQUARE ALUMINUM PLATE IN TOP CENTER OF HEADWALL ON THE WEST SIDE OF U.S. 95 NEAR MILE MARKER 90.15.

BASIS OF BEARINGS
SOUTH - 001°47' EAST, BEING THE BEARING OF THE WEST LINE OF THE NORTHWEST QUARTER (NW 1/4) OF SECTION 18, TOWNSHIP 19 SOUTH, RANGE 60 EAST, M.D.M., CITY OF LAS VEGAS, CLARK COUNTY, NEVADA, AS SHOWN ON THAT CERTAIN RECORD OF SURVEY ON FILE IN THE OFFICE OF THE COUNTY RECORDER, CLARK COUNTY, NEVADA, IN FILE 114 OF SURVEYS, AT PAGE 57.

ENGINEER DISCLAIMER NOTE:
UTILITY LOCATIONS SHOWN HEREON ARE APPROXIMATE ONLY. IT SHALL BE THE CONTRACTOR'S RESPONSIBILITY TO DETERMINE THE EXACT HORIZONTAL AND VERTICAL LOCATION OF ALL EXISTING UNDERGROUND AND OVERHEAD UTILITIES AND NOTIFY THE DESIGN ENGINEER IMMEDIATELY OF ANY DISCREPANCIES PRIOR TO COMMENCING CONSTRUCTION.
NO REPRESENTATION IS MADE THAT ALL EXISTING UTILITIES ARE SHOWN HEREON. THE ENGINEER ASSUMES NO RESPONSIBILITY FOR UTILITIES NOT SHOWN OR UTILITIES NOT SHOWN IN THEIR PROPER LOCATION.

SEWER CONNECTION NOTE
ONE OR MORE SEGMENTS OF THE DOWNSTREAM SEWER SYSTEM THAT WILL SERVE THIS PROJECT HAS NOT BEEN COMPLETED AND/OR ACCEPTED FOR MAINTENANCE BY THE CITY OF LAS VEGAS. ANY WORK DONE ON THIS PROJECT PRIOR TO THE COMPLETION AND/OR ACCEPTANCE OF THE DOWNSTREAM SEWER SYSTEM(S) SHALL BE DONE AT THE DEVELOPER'S OWN RISK. THE CITY OF LAS VEGAS RESERVES THE RIGHT TO PREVENT THE PHYSICAL CONNECTION OF THIS PROJECT INTO THE DOWNSTREAM SEWER SYSTEM UNTIL ALL SEGMENTS HAVE BEEN COMPLETED AND ACCEPTED FOR MAINTENANCE, OR UNTIL SUCH TIME AS THEY ARE DEEMED AVAILABLE FOR SERVICE.

APPROVAL:
LAS VEGAS VALLEY WATER DISTRICT
PROJECT #2804

AS BUILT

BEAZER HOMES
4670 S FORT APACHE, SUITE #200
LAS VEGAS, NEVADA 89147
(702) 807-2100

BEAZER TETON VILLAGE GRAND TETON VILLAGE UNIT 2

MASTER UTILITY PLAN

APN 126-13-501-008 SILVER STATE HOLDING COMP.

APN 125-18-101-008 ANTELOPE LLC

DEBORAH KALEIKINI JOHNSON CIVIL ENGINEER

DRAWN BY: CNB
DESIGNED BY: DLG
CHECKED BY:
PROJECT NO: 6145

AUGUST, 2003
AUGUST, 2003

SCALE: 1" = 40' HORIZ. N/A VERT.

SHEET UT2
6 OF 35 SHEETS
DRAWING NO. 1074719-2

CITY OF LAS VEGAS
2727 SOUTH RAINBOW BOULEVARD LAS VEGAS, NEVADA 89146-5148
PH. (702) 873-7550 FAX (702) 962-2897
nevada CONSULTING ENGINEERS • PLANNERS • LAND SURVEYORS

REVISION

12/30/03

96354