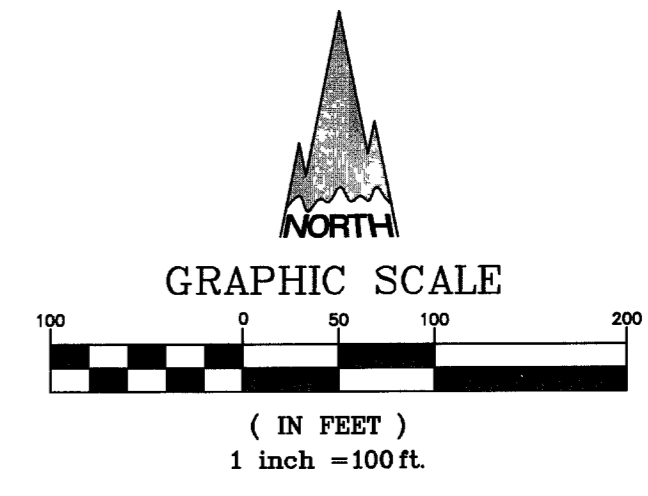
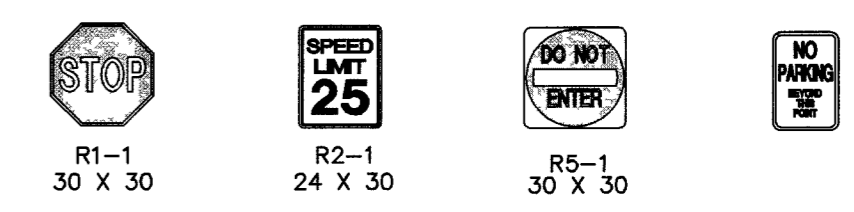


TRAFFIC LEGEND		
BOUNDARY	10+00	100W STREET LIGHT
CENTER LINE & STATION		150W STREET LIGHT
RIGHT-OF-WAY		250W STREET LIGHT
LOT LINE		400W STREET LIGHT
WATER MAIN	8" W	EXISTING STREET LIGHT
WATER LATERAL		STREETLIGHT CONDUIT 2"
EXISTING WATER MAIN	EX. 6" W	EX STREETLIGHT CONDUIT 1 1/4"
EXISTING GAS MAIN	EX. 8" SS	STREETLIGHT SERVICE POINT
SEWER MAIN		TRAFFIC CONTROL SIGN (SEE PLANS FOR TYPE)
SEWER LATERAL		TYPE 3 BARRICADE
EXISTING SEWER MAIN	EX. 8" SS	D3-1F (STREET NAME SIGN)
BACK OF CURB		R1-1 (STOP SIGN) 30"
FACE OF CURB		FIRE HYDRANT
LIP OF GUTTER		
LIP OF GUTTER		
SIDEWALK		
EXISTING CURB		
EDGE OF EXISTING PAVEMENT		
SIGHT VISIBILITY ZONE		
NO OBJECT ABOVE 24" IN SVZ		



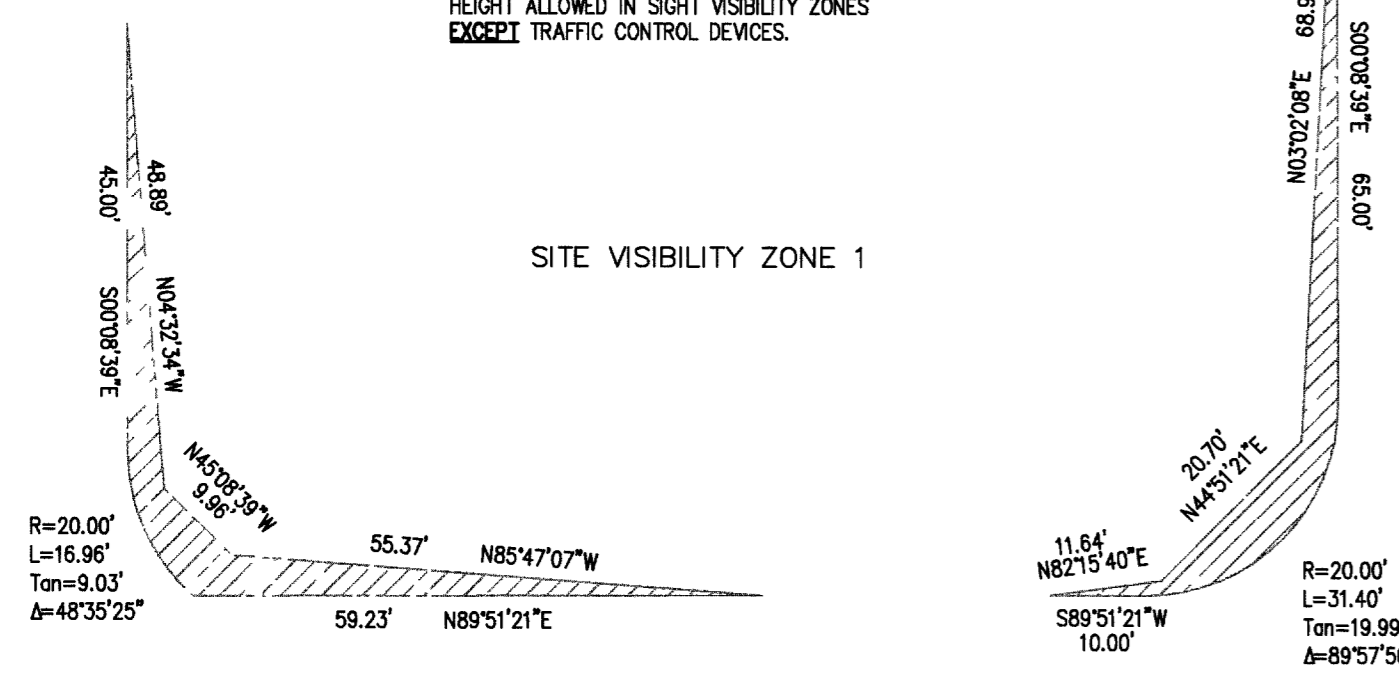
NOTE:  
ALL INTERIOR LIGHTING WILL BE PRIVATE LIGHTING

- TRAFFIC CONSTRUCTION NOTES**
- INSTALL 30" X 30" R1-1 STOP SIGN.
  - INSTALL 9" STREET NAME SIGN PER USD #250. PRIVATE STREET NAME SIGNS SHALL BEAR THE WORDS "PRIVATELY MAINTAINED" AND BE WHITE LETTERS ON BROWN BACKGROUND.
  - INSTALL 24" X 30" R2-1 25 MPH SPEED LIMIT SIGN.
  - INSTALL BLUE COLORED REFLECTIVE RAISED PAVEMENT MARKER.
  - INSTALL "NO PARKING BEYOND THIS POINT" SIGN PER USD #213.
  - INSTALL "NO PARKING ANYTIME" SIGN ON STREETLIGHT POLE.
  - INSTALL "NO PARKING ANYTIME" SIGN AND R5-1 "DO NOT ENTER" SIGN.
  - INSTALL WROUGHT IRON FENCE PER DETAIL M, SHT 26.
  - INSTALL EMGCV CRASH GATE PER CLV DWG 421B, DETAIL SHT 27.
  - INSTALL BOLLARDS PER DETAIL O, SHT 26.
  - PAINT YELLOW CENTERLINE STRIPE TO MATCH EXISTING.
  - PAINT CROSSWALK MARKINGS TO MATCH EXISTING.

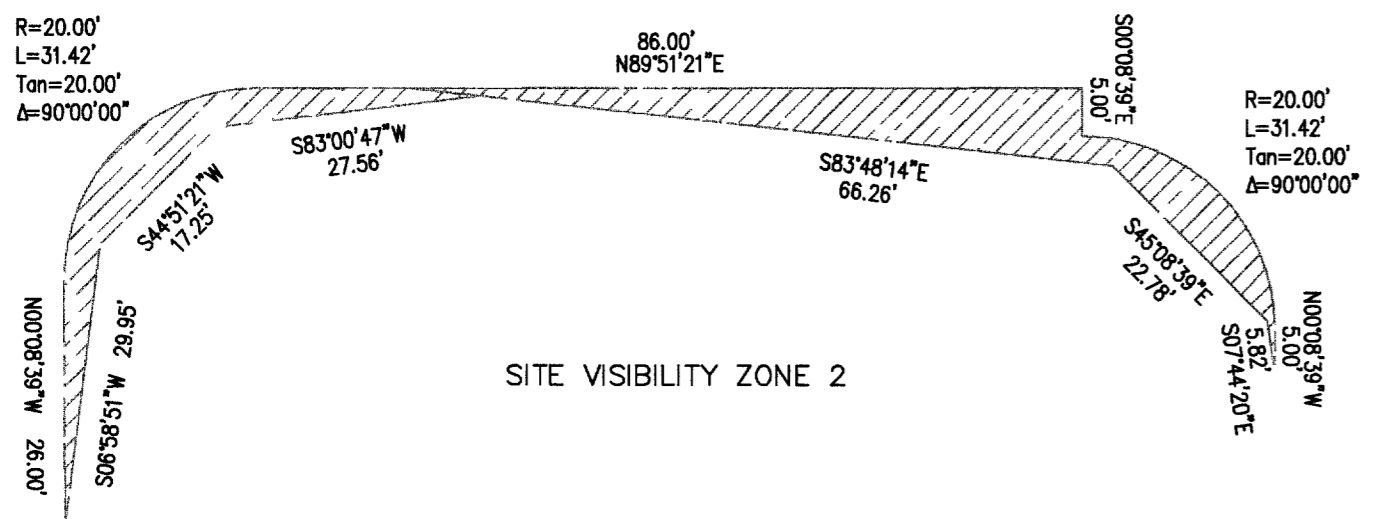


NOTE:  
NO PROPOSED IMPROVEMENTS OVER 24" IN HEIGHT ALLOWED IN SIGHT VISIBILITY ZONES EXCEPT TRAFFIC CONTROL DEVICES.

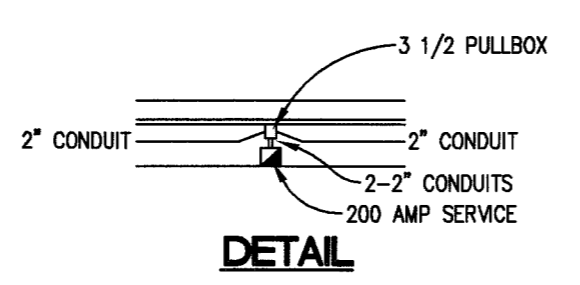
SITE VISIBILITY ZONE 1



SITE VISIBILITY ZONE 2



- 200 AMP 240V PAD MOUNT SERVICE
- 2 POLE 60 AMP CIRCUIT BREAKERS
  - 1 POLE 15 AMP CIRCUIT BREAKERS
  - 1 POLE 40 AMP CIRCUIT BREAKERS
  - 1 POLE 60 AMP CIRCUIT BREAKERS
  - 2 POLE 60 AMP CONTRACTORS
  - BY PASS SWITCH PER CONTRACTOR



**TRAFFIC SIGN GRAPHICAL DEPICTION LEGEND**

R1-1	12" (MAJOR STREETS) 9" (MINOR STREETS)	R2-1	ALUMINUM, REFLECTIVE 18" X 12" RED/WHITE ORDER #1035185-RA MANUFACTURE "EMEDCO" OR EQUIVALENT
			14" (COLOR RED) (COLOR BLACK) (COLOR RED) 2 1/2" LETTERS (COLOR RED) (COLOR WHITE) (COLOR RED) ARROW (COLOR RED)
<b>MINIMUM SPECIFICATIONS</b>			
SIZE: 24" LONG 18" WIDE			
SYMBOL: INTERNATIONAL NO PARKING SYMBOL			
HEIGHT: TO BE INSTALLED NOT LESS THAN SEVEN (7) FEET FROM GROUND LEVEL			

**BASIS OF BEARINGS**

THE EAST LINE OF THE SOUTHWEST QUARTER (SW 1/4) OF SECTION 35, TOWNSHIP 19 SOUTH, RANGE 60 EAST, M.D.M., CLARK COUNTY, NEVADA, AS SHOWN BY THAT RECORD OF SURVEY ON FILE IN FILE #0 OF SURVEYS, PAGE 74 IN THE CLARK COUNTY RECORDER'S OFFICE, CLARK COUNTY, NEVADA. SAID LINE BEARS SOUTH 00°08'24" EAST.

**BENCHMARK**

CLV BM 0LV90 3554 BEING A RIVET & PLATE IN TOP OF CURB 60 FT NORTH OF LONE MOUNTAIN ON EAST CURB OF TORREY PINES. ELEVATION: 2301.17 FEET/701.3985 METERS (NAVD '88 DATUM)

AVOID CUTTING UNDERGROUND UTILITY LINES. IT'S COSTLY. Call before you Dig 1-800-227-2800 (NEVADA SERVICE ONLY) 9302988

AVOID OVERHEAD POWER LINE CONTACT Call before you OVERHEAD 1-702-227-2929 (NEVADA SERVICE ONLY) 96261

DATE: _____	SHEET: _____	DRAWN BY: _____	DESIGNED BY: _____	CHECKED BY: _____	PROJECT NO: _____
DATE: _____	TITLE: _____	DATE: _____	DATE: _____	DATE: _____	PROJECT NO: _____
<p><b>TRAFFIC CONTROL AND SIGNAGE</b></p> <p>D.R. HORTON 6845 ESCONDIDO STREET BLDG #6, SUITE 105 LAS VEGAS, NV 89119 PHONE: (702) 435-4888 FAX: (702) 638-4700</p>			<p><b>BAVARIA ESTATES</b></p> <p>Lone Mountain Engineering 6345 S. JONES BLVD., SUITE 200 LAS VEGAS, NEVADA 89118 PHONE: (702) 312-9550 FAX: (702) 320-1769</p>		
<p>REV: 1-5-06 <b>CHK</b> REVISED STREET NAME 17766</p>					
<p>PROFESSIONAL ENGINEER STATE OF NEVADA TRUSTEE No. 11786 6/14/06</p>					
<p>SHEET No. <b>25</b> of 28 1074934</p>					