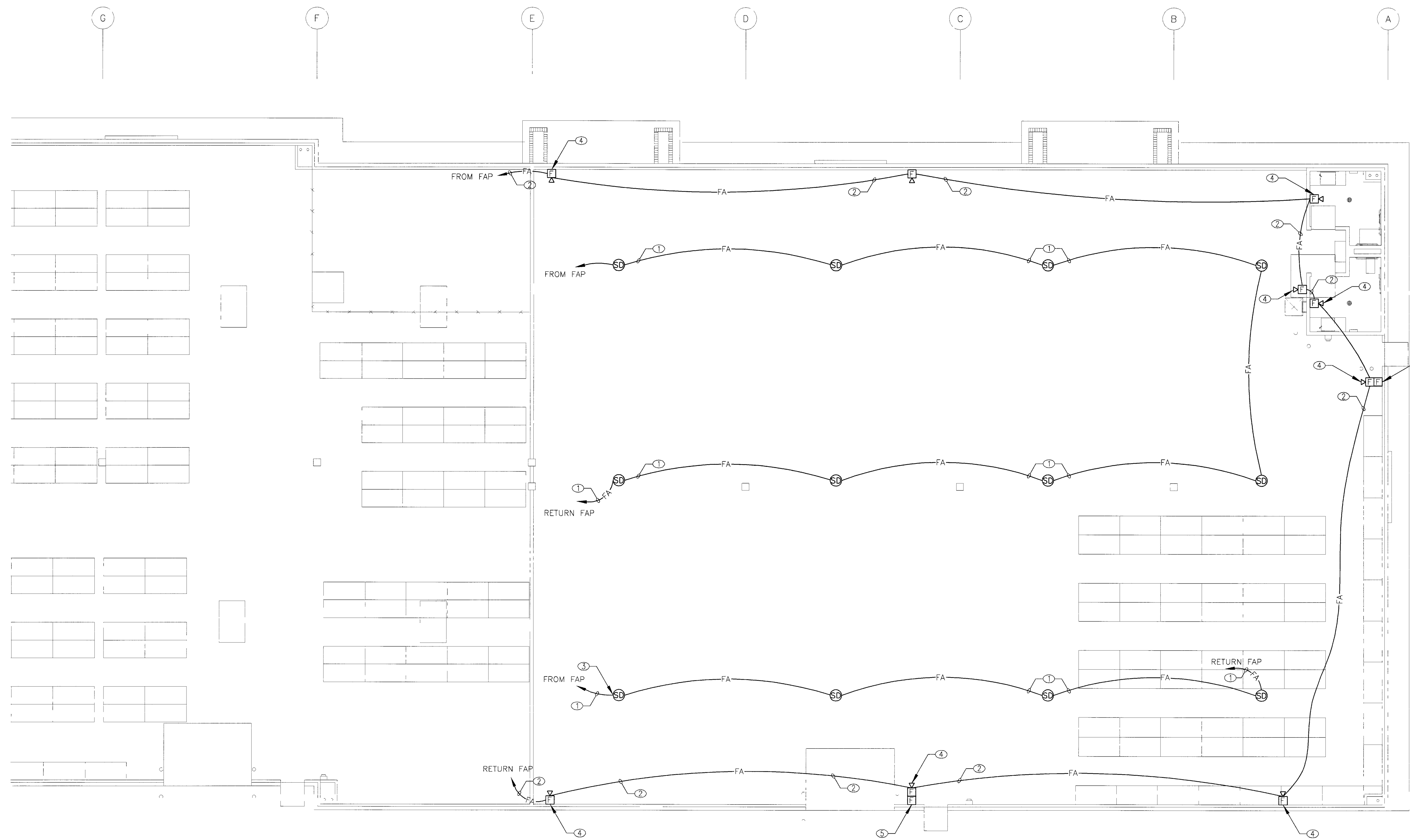


GENERAL NOTES

- CONTRACTOR SHALL REFER TO THE SPECIFICATIONS FOR ACCEPTABLE MANUFACTURERS OF FIRE ALARM SYSTEM TO MEET CITY AND LOCAL FIRE DEPARTMENT REQUIREMENTS
- FIRE ALARM CABLE ROUTING, CONDUIT ROUTING, CABLE AND ALARM DEVICES ARE DIAGRAMMATIC. CONTRACTOR SHALL FOLLOW AND COMPLY WITH DRAWINGS FURNISHED BY FIRE ALARM CONTRACTOR

ELECTRICAL PLAN KEYNOTES

- ① 2#12 - 3/4" C
- ② 4#12 - 3/4" C
- ③ FIRE ALARM SMOKE DETECTOR (SEE SPECIFICATIONS FOR ACCEPTABLE MANUFACTURERS)
- ④ FIRE ALARM STROBE WITH HORN (SEE SPECIFICATIONS FOR ACCEPTABLE MANUFACTURERS)
- ⑤ FIRE ALARM PULL STATION (SEE SPECIFICATIONS FOR ACCEPTABLE MANUFACTURERS)



NO.	REVISIONS

CONSULTANT:

JVC ARCHITECTS

atelier

4290 Centennial Ave. 2
Las Vegas, NV 89103
ph: 702.871.3414
fax: 702.871.2930

© JVC ASSOCIATES, INC. 2004

**CITY OF LAS VEGAS
RECORDS ARCHIVAL
MATERIALS STORAGE FACILITY
BUFFALO & PEAK
LAS VEGAS, NEVADA**

STAMP

JUL 17 2006

OWNER: CITY OF LAS VEGAS
DEPARTMENT OF PUBLIC WORKS
ARCHITECTURAL SERVICES

400 EAST STEWART AVENUE
LAS VEGAS, NEVADA 89101
PHONE: (702) 229-6535
FAX: (702) 382-3232
TDD: (702) 386-9108

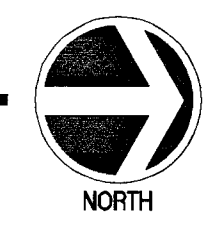
DRAWN	DJP
CHECK	SMH
FILE	
DATE	03.29.04
SCALE	
SEE SHEET	
DIS NO	04-15341.03
CLV DWG NO	521-288
SHIFT NO	

E3.04

WRIGHT ENGINEERS

7475 Peak Drive
Las Vegas, Nevada 89103
(702) 314-7110 F or (702) 314-7111

A FIRE ALARM PLAN
SCALE 1/8" = 1'-0"



702
95

DRAWINGS AND INSTRUMENTS OF SERVICE ARE THE PROPERTY OF THE DESIGN PROFESSIONAL WHOSE STAMP OF CERTIFICATION APPEARS ON THE DRAWINGS AND SPECIFICATIONS. ANY USE OR REPRODUCTION IN WHOLE OR IN PART WITHOUT WRITTEN CONSENT IS STRICTLY PROHIBITED. COPIES OF THE DRAWINGS AND SPECIFICATIONS REMAINED BY THE CLIENT MAY BE UTILIZED ONLY FOR OCCUPANCY OF THE PROJECT FOR WHICH THEY WERE PREPARED AND NOT FOR THE CONSTRUCTION OF ANY OTHER PROJECT. N.A.C. 632.390