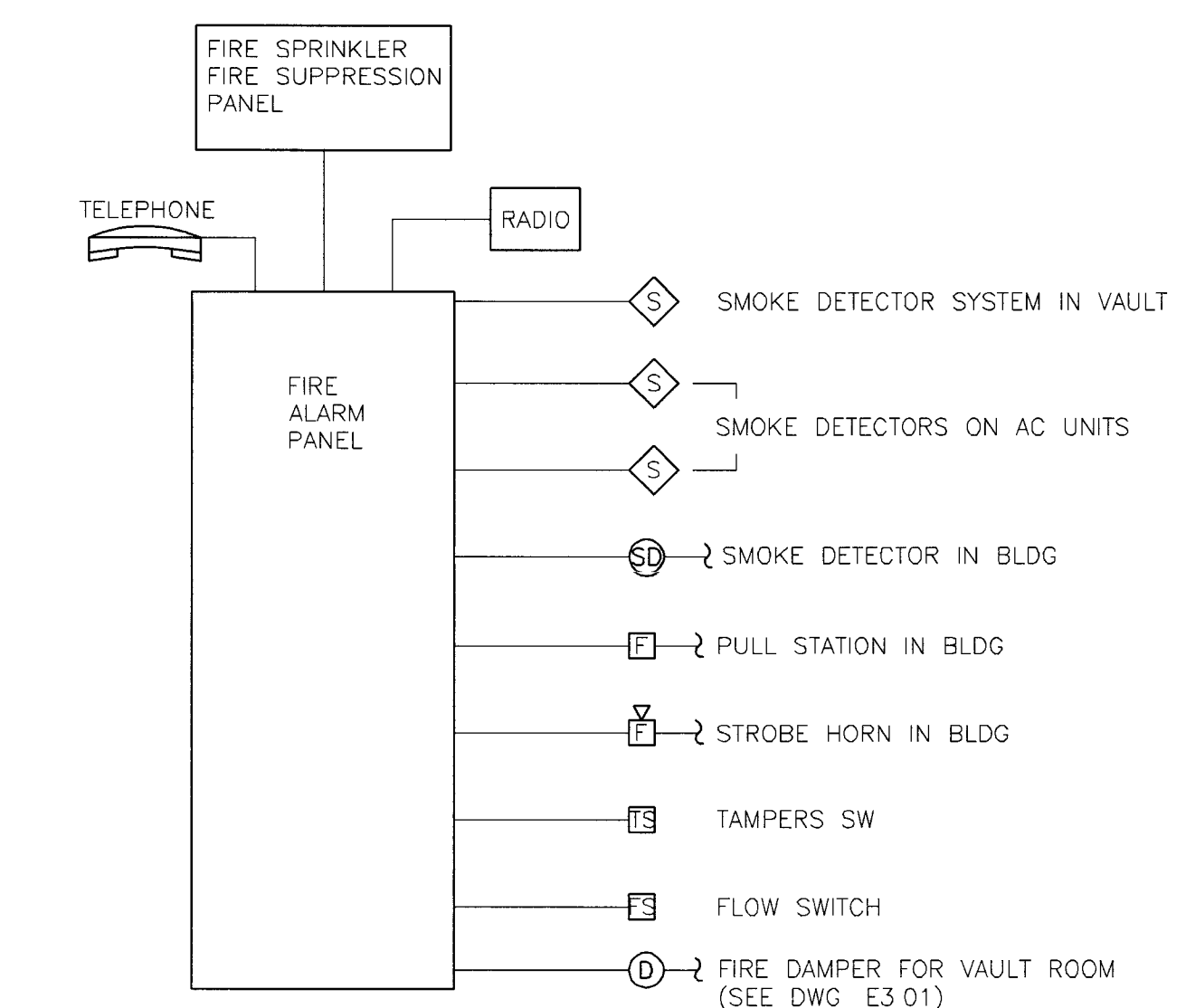
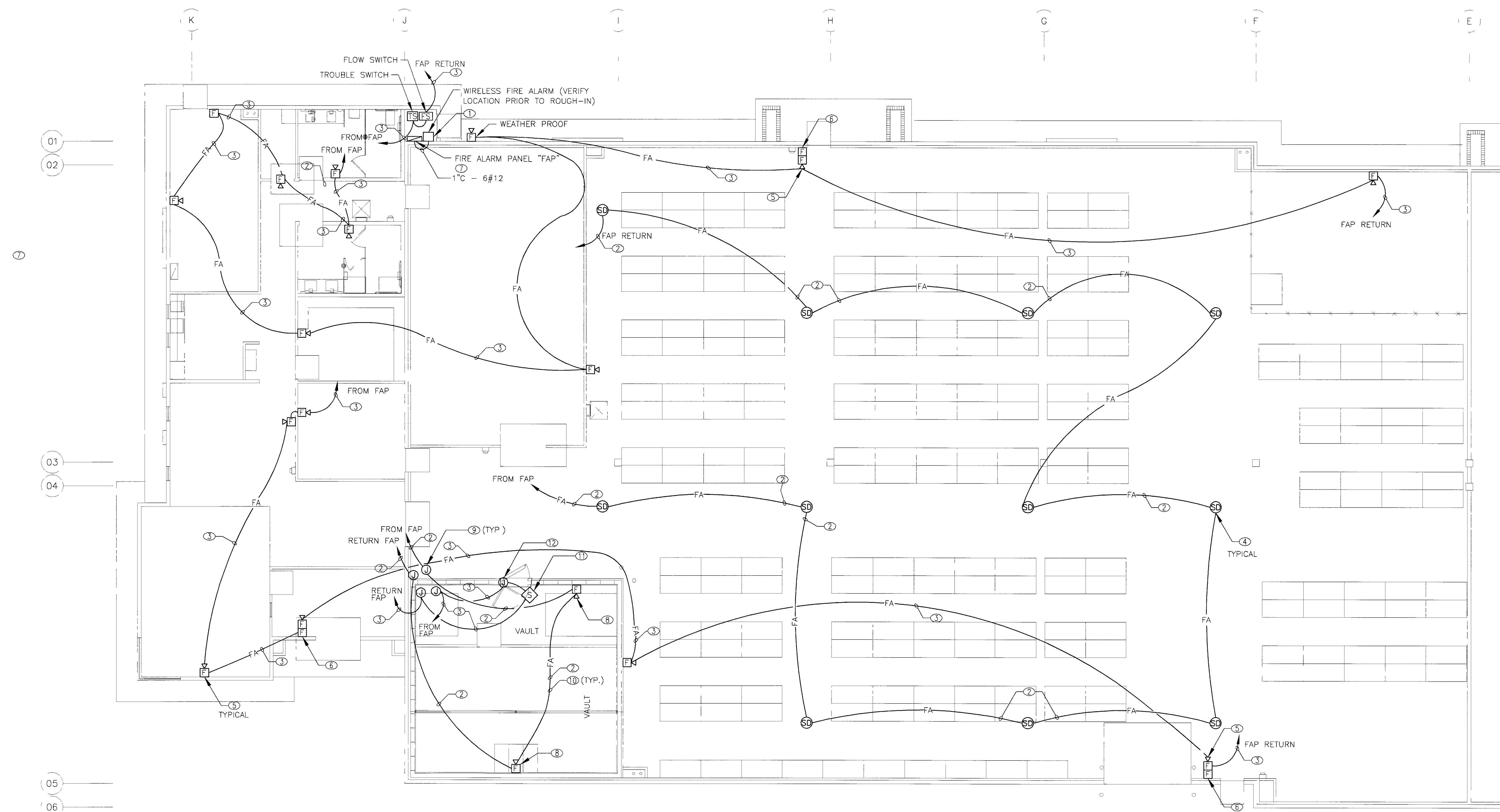


GENERAL NOTES

1. CONTRACTOR SHALL REFER TO THE SPECIFICATIONS FOR ACCEPTABLE MANUFACTURERS OF FIRE ALARM SYSTEM TO MEET CITY AND LOCAL FIRE DEPARTMENT REQUIREMENTS.
2. FIRE ALARM CABLE ROUTING, CONDUIT ROUTING, CABLE AND ALARM DEVICES ARE DIAGRAMMATIC. CONTRACTOR SHALL FOLLOW AND COMPLY WITH DRAWINGS FURNISHED BY FIRE ALARM CONTRACTOR.

ELECTRICAL PLAN KEYNOTES

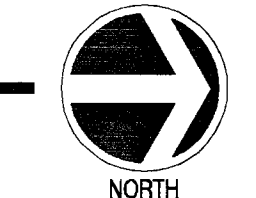
- ① J-BOX FOR FIRE RADIO COMMUNICATOR PROVIDE DEDICATED 20A 120V BRANCH CIRCUIT FOR THE COMMUNICATOR
- ② 2#12 - 3/4" C
- ③ 4#12 - 3/4" C
- ④ FIRE ALARM SMOKE DETECTOR - MANUFACTURED BY SIMPLEX OR SEE SPECIFICATIONS FOR ACCEPTABLE MANUFACTURERS
- ⑤ FIRE ALARM STROBE WITH HORN - MANUFACTURED BY SIMPLEX OR SEE SPECIFICATIONS FOR ACCEPTABLE MANUFACTURERS
- ⑥ FIRE ALARM PULL STATION - MANUFACTURED BY SIMPLEX OR SEE SPECIFICATIONS FOR ACCEPTABLE MANUFACTURERS
- ⑦ FIRE ALARM PANEL MANUFACTURED BY SIMPLEX OR SEE SPECIFICATIONS FOR ACCEPTABLE MANUFACTURERS
- ⑧ STROBE HORN IN VAULT SHALL HAVE DUST TIGHT AND VAPOR TIGHT ENCLOSURE
- ⑨ ROUTE THROUGH J-BOX PROVIDED BY MANUFACTURER OF VAULT
- ⑩ FIRE ALARM WIRES IN VAULT SHALL BE IN RIDGED STEEL CONDUIT
- ⑪ SMOKE DETECTOR IN VAULT SHALL BE FURNISHED BY CONTRACTOR PROVIDING GASEOUS FIRE SUPPRESSANT SYSTEM AS PART OF THE DOOR CLOSING SYSTEM. PROVIDE TIE INTO THIS SYSTEM TO ACTIVATE FIRE ALARM PANEL.
- ⑫ COORDINATE WITH VAULT CONTRACTOR FOR OTHER FIRE ALARM REQUIREMENTS



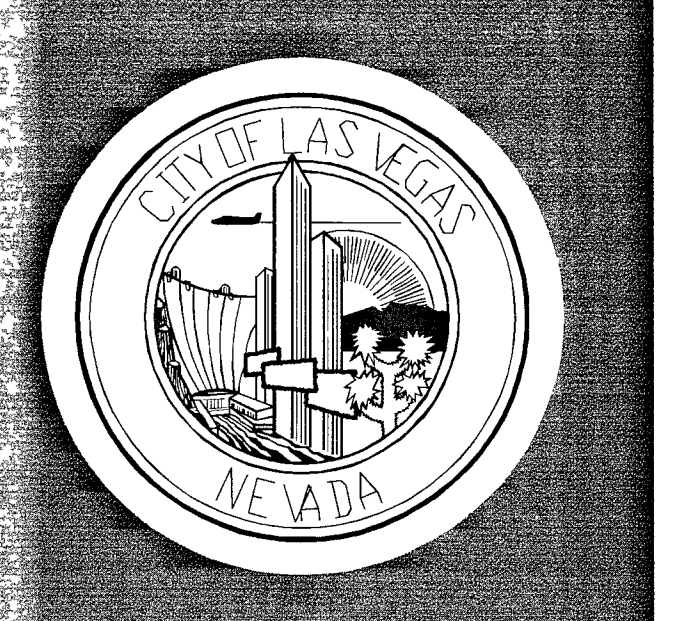
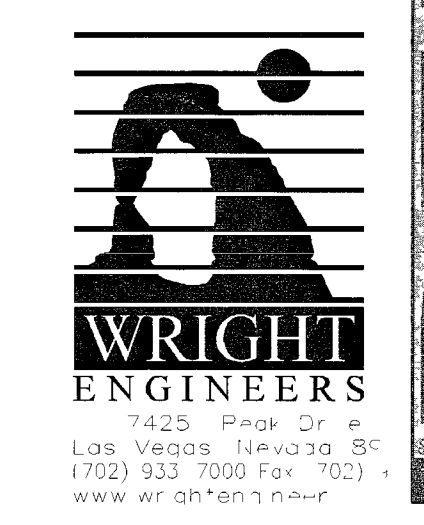
- INITIATING DEVICE CIRCUITS - CLASS "A", STYLE "D" OR "E"
- SIGNALING LINE DEVICE - CLASS "A", STYLE "5", "6" OR "7"
- NOTIFICATION APPLIANCE CIRCUITS - CLASS "A", STYLE "Z"

1 ADDRESSABLE SYSTEM

A FIRE ALARM PLAN
SCALE: 1/8" = 1'-0"



95700



REVISIONS

CONSULTANT

JVC ARCHITECTS

atelier

4290 Cameron Ste. 2
Las Vegas, NV 89103
ph: 702-671-3419
fax: 702-671-2830

© JVC ASSOCIATES, INC 2004

**CITY OF LAS VEGAS
RECORDS ARCHIVAL
MATERIALS STORAGE FACILITY
BUFFALO & PEAK
LAS VEGAS, NEVADA**

STAMP

JUL 17 2006

OWNER: CITY OF LAS VEGAS
DEPARTMENT OF PUBLIC WORKS
ARCHITECTURAL SERVICES

400 EAST STEWART AVENUE
LAS VEGAS, NEVADA 89101
PHONE: (702) 229-6535
FAX: (702) 382-3232
TDD: (702) 386-9108

DRAWN	DJP
CHECK	SMH
FILE	MN23191
DATE	03.29.04
SCALE	SEE SHEET
BID NO	04-15341.03
CLV DWG NO	521-288
SHEET NO	

E3.03

DRAWINGS AND INSTRUMENTS OF SERVICE ARE THE PROPERTY OF THE DESIGN PROFESSIONAL WHOSE STAMP OF CERTIFICATION APPEARS ON THE DRAWINGS AND SPECIFICATIONS MAY NOT BE REPRODUCED OR TRANSMITTED IN ANY FORM OR BY ANY MEANS, WITHOUT WRITTEN CONSENT OF THE DESIGNER. ANY UNAUTHORIZED REPRODUCTION OR TRANSMISSION OF THIS DOCUMENT IS STRICTLY PROHIBITED. CONTACT THE DESIGNER FOR PERMISSION TO REPRODUCE OR TRANSMIT THIS DOCUMENT. ANY OTHER PRODUCT N.A.C. 833.290.