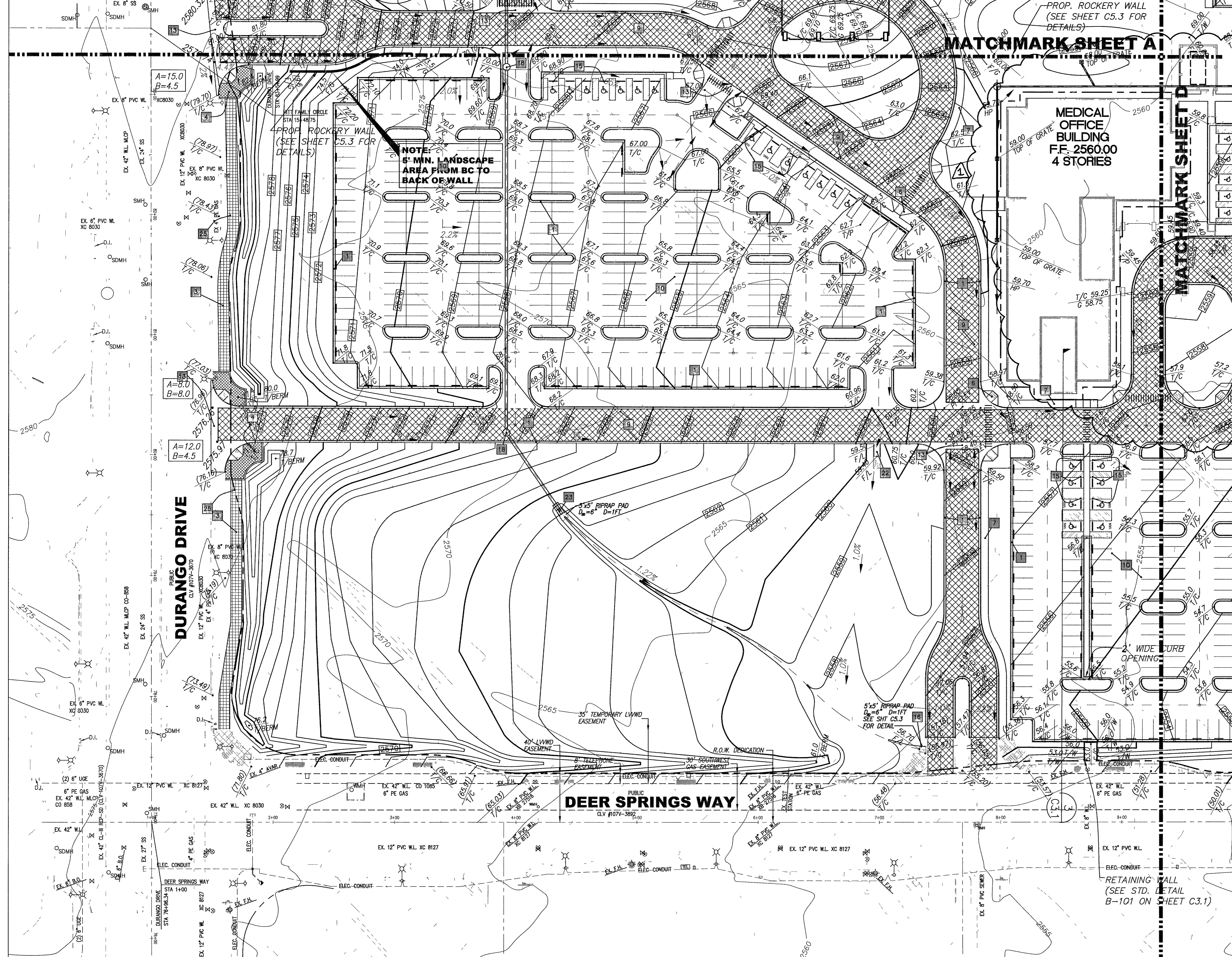


MATCHMARK SHEET A



CONSTRUCTION NOTES

- (NOT ALL KEY NOTES ARE USED ON THIS DRAWING)
- CONSTRUCT "L" TYPE CURB AND GUTTER PER C.C.A.U.S.D. #216.
 - CONSTRUCT COMMERCIAL/INDUSTRIAL DRIVEWAY PER C.C.A.U.S.D. #225 WITH GEOMETRICS OF #222A. CONSTRUCT 8" CROSS GUTTER PER C.C.A.U.S.D. #228.
 - CONSTRUCT CONCRETE SIDEWALK PER C.C.A.U.S.D. #234.
 - CONSTRUCT SIDEWALK RAMP CASE II PER C.C.A.U.S.D. #235.
 - CONSTRUCT 2" UNDER SIDEWALK DRAIN PER C.C.A.U.S.D. #236.
 - CONSTRUCT ON-SITE SIDEWALK RAMP PER DETAIL ON SHEET C2.1.
 - CONSTRUCT 8" ON-SITE SIDEWALK PER DETAIL ON SHEET C2.1. (SEE CIVIL PLAN SHEET C2.1 FOR FINISHES AND JOINT LAYOUT).
 - CONSTRUCT SIX INCH (6") CONCRETE PAVEMENT PER "CONCRETE PAVEMENT DETAIL" ON SHEET C2.1.
 - CONSTRUCT THREE INCH (3") ASPHALT PAVEMENT WITH CONCRETE CURB AND GUTTER PER ASPHALT PAVEMENT DETAIL ON SHEET C2.1.
 - CONSTRUCT TWO INCH (2") ASPHALT PAVEMENT WITH CONCRETE CURB AND GUTTER PER ASPHALT PAVEMENT DETAIL ON SHEET C2.1.
 - CONSTRUCT THREE INCH (3") ASPHALT PAVEMENT PER ASPHALT PAVEMENT DETAIL ON SHEET C2.1.
 - CONSTRUCT HELIXSTOP PAD PER DETAIL ON SHEET C2.1.
 - CONSTRUCT CONCRETE VALLEY GUTTER PER DETAIL ON SHEET C2.1.
 - PLANTING AREA REFER TO LANDSCAPE PLANS.
 - INSTALL PRECAST BUMPER BLOCK PER C.C.A.U.S.D. #238.
 - CONSTRUCT OUTFALL NO. 1 PER DETAIL ON SHEET C5.3.
 - CONSTRUCT OUTFALL NO. 2 PER DETAIL ON SHEET C5.3.
 - CONSTRUCT TYPE 1-A MANHOLE PER C.C.A.U.S.D. #404 ON SHEET C5.6.
 - CONSTRUCT TYPE CM DROP INLET PER DETAIL ON SHEET C5.6.
 - CONSTRUCT 15"x30" TYPE 3 DROP INLET PER N.D.O.T. DETAIL ON SHEET R-4.3.1.
 - CONSTRUCT ADS AREA DRAIN PER DETAIL ON SHEET C5.5.
 - CONSTRUCT CONCRETE FLUME PER DETAIL ON SHEET C5.5.
 - INSTALL ADS FLARED END SECTION PER DETAIL ON SHEET S.5.
 - CONSTRUCT CMU WALL PER CLARK COUNTY BUILDING DEPARTMENT STANDARD DRAWING NO B-101.
 - CONSTRUCT SPECIAL PAVEMENT PATTERN & SIDEWALK TREATMENT PER TOWN CENTER STDS. (SEE SHEET C2.2 - SPECIAL SIDEWALK TREATMENTS)

LEGEND

- PROP. 5' CONTOUR
- PROP 1' CONTOUR
- EX. 5' CONTOUR
- EX. 1' CONTOUR
- PROP. ASPHALT PAVING
- PROP. CONCRETE PAVING
- EX. TOP OF CURB
- HIGH POINT
- BOTTOM OF WALL
- TOP OF SIDEWALK
- TOP OF PAVEMENT
- FINISHED GRADE
- FLOWLINE

NOTES

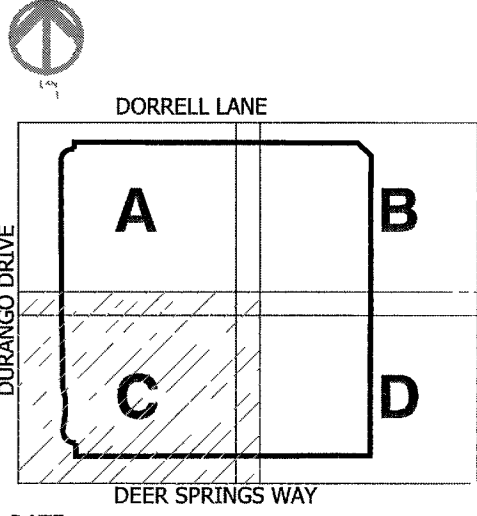
- REFER TO GEOTECH RPT FOR GRADING
- REFER TO LANDSCAPE PLANS FOR GROUNDCOVER

BASIS OF BEARING

THE BASIS OF BEARING IS A LINE BETWEEN THE N1/4 COR. OF SEC. 20, T. 19 S., R. 60 E., M.D.M., AND THE E1/16 COR. OF SAID SEC. 20, AS SHOWN ON EXHIBIT B OF DOC. 20030131-03151, WHICH IS THE DEDICATION OF ELKHORN ROAD, WHICH BEARS S 89°42'15" E.

CLV BENCHMARK #BLV90-20N6
RIVET & PLATE IN CONCRETE CYLINDER NE CORNER OF EL CAPITAN & DORRELL
ELEVATION: 788.9015 METERS, 2588.25 FEET

KEY PLAN



DATE: **20 Jun 05**

BID/PERMIT ISSUE
20 JUN 05

SHEET TITLE

GRADING PLAN

SHEET NO. **C3.C**
SHEET NO. 16 OF 43
107V4516

GRADING PLAN CERTIFICATION:

I, *Richard Carson, Jr.* 7/27/06 CERTIFY THAT THIS GRADING PLAN
Richard Carson, Jr., P.E. No. 14870 Date
IS IN CONFORMANCE WITH APPROVED DRAINAGE STUDY FOR THIS SITE ON FILE WITH
THE CITY OF LAS VEGAS. DS3822

CAUTION TO CONTRACTOR

THE CONTRACTOR SHALL BE RESPONSIBLE TO INVESTIGATE AND VERIFY THE ACTUAL LOCATION AND DEPTH OF ALL EXISTING UNDERGROUND FACILITIES AT LEAST 48 HOURS IN ADVANCE OF THE PERFORMANCE OF ANY WORK.

Avoid cutting underground utility lines. It's costly.

Avoid overhead power line contact. It's costly.

Call before you Dig
1-800-227-2600
93740 93902

Call before you OVERHEAD
1-702-455-7511
CLARK COUNTY TRAFFIC OPERATIONS AND
1-702-229-6611
LAS VEGAS AREA COMPUTERIZED TRAFFIC SYSTEM

Call before you UnderGround
1-702-455-7511
CLARK COUNTY TRAFFIC OPERATIONS AND
1-702-229-6611
LAS VEGAS AREA COMPUTERIZED TRAFFIC SYSTEM