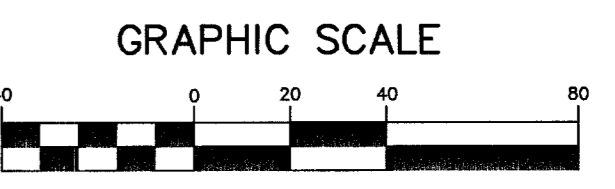
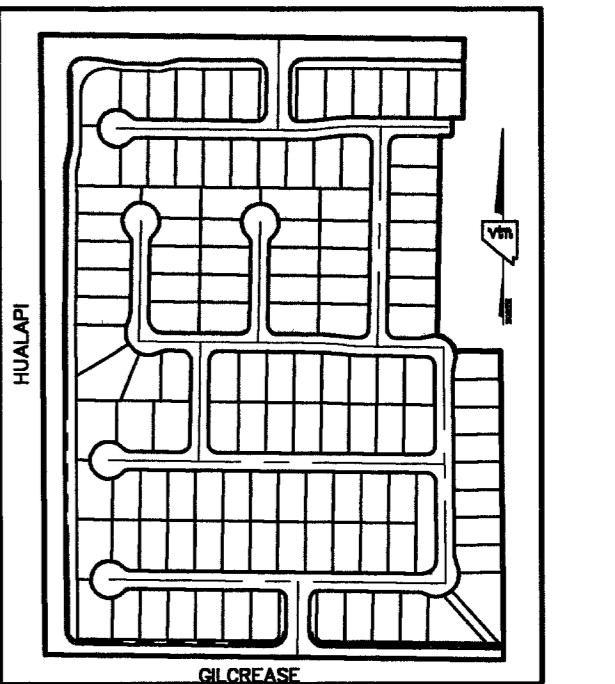


UNSUBDIVIDED
APN 125-07-401-001
USA
WASHINGTON D.C.

BASIS OF BEARINGS
SOUTH 00°14'47" EAST, BEING THE BEARING OF THE WEST LINE OF THE NORTHWEST QUARTER (NW 1/4) OF SECTION 18, TOWNSHIP 19 SOUTH, RANGE 60 EAST, M.D.M., CITY OF LAS VEGAS, CLARK COUNTY, NEVADA, AS SHOWN ON THAT CERTAIN RECORD OF SURVEY ON FILE IN THE OFFICE OF THE COUNTY RECORDER, CLARK COUNTY, NEVADA, IN FILE 114 OF SURVEYS, AT PAGE 57.

PROJECT BENCHMARK
PROJECT DATUM: NORTH AMERICAN VERTICAL DATUM OF 1988 (NAVD88)
CITY OF LAS VEGAS BENCHMARK: 0907178
ELEVATION: 799.0857 METERS (2,621.67 FEET)
RIVET AND SQUARE ALUMINUM PLATE IN TOP CENTER OF HEADWALL ON THE WEST SIDE OF U.S. 95 NEAR MILE MARKER 90.15.



NOTE:
ALL STREET LIGHT AND TRAFFIC CONDUITS ARE TO BE INSTALLED UNDER SIDEWALK AREA (TYP)

STREET LIGHT NOTE:
ALL HAND HOLE COVERS MUST BE INSTALLED. PLE CAPS POURED AND PULL BOX LIDS BOLTED DOWN PRIOR TO ENERGIZING CIRCUIT. ALL WIRE MUST HAVE THE INSULATION.

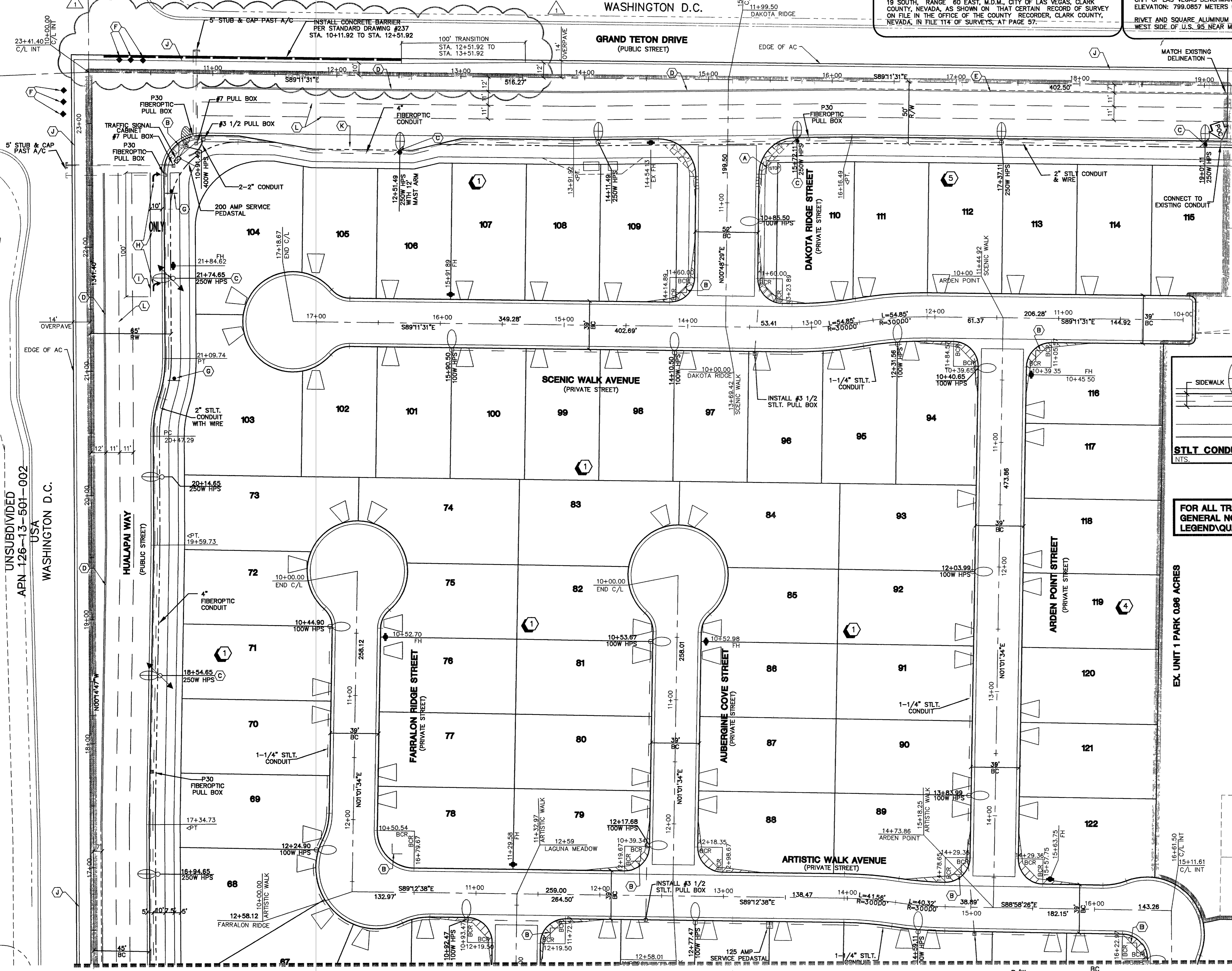
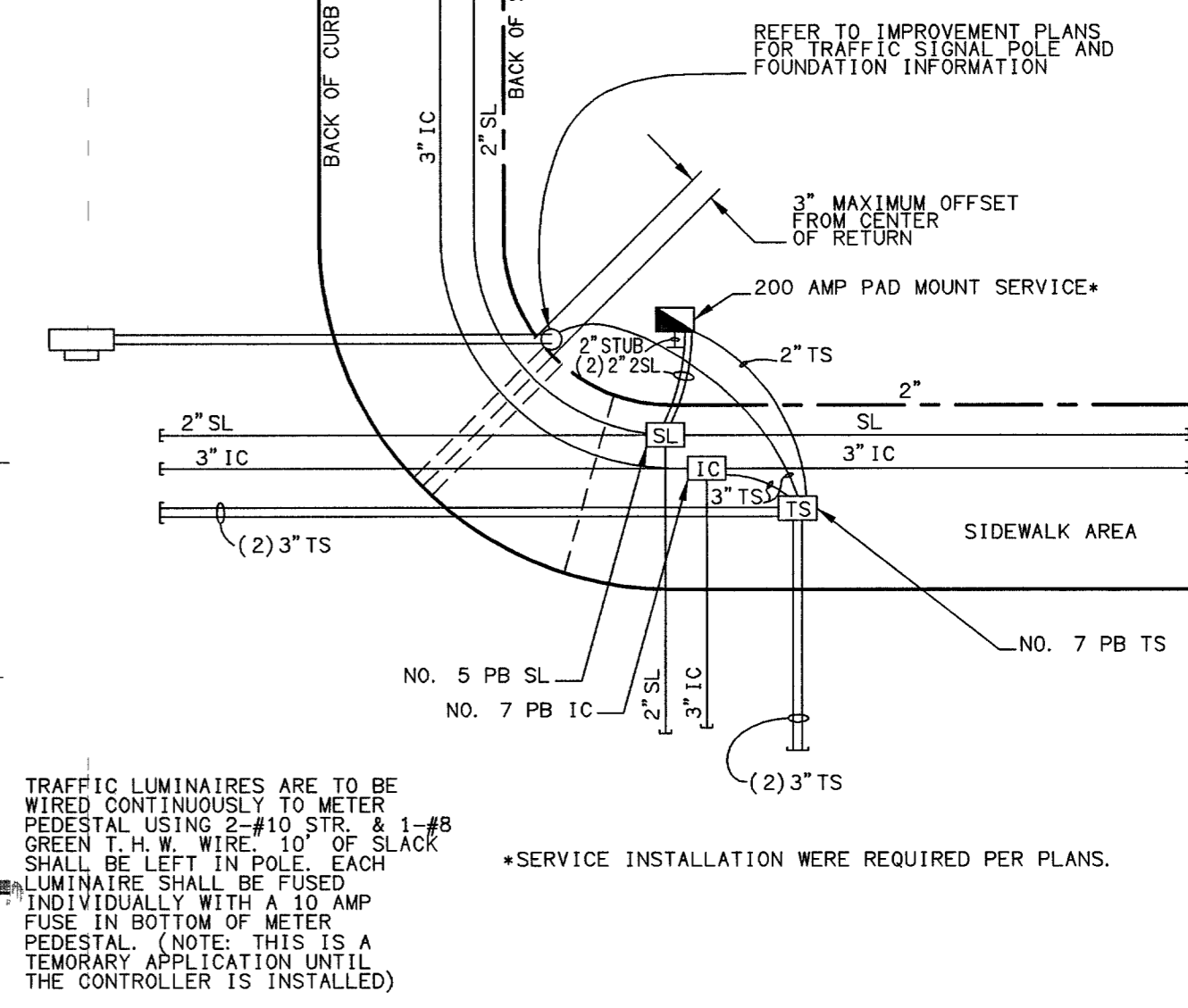
| STREET LIGHTS | PUBLIC |
|---------------------------------|----------|
| 100 WATT H.P.S. | 30 EA. |
| 150 WATT H.P.S. | 5 EA. |
| 250 WATT H.P.S. | 17 EA. |
| 400 WATT H.P.S. | 1 EA. |
| 1 1/4" STLT CONDUIT | 7917 LF. |
| 2" STLT CONDUIT | 0 LF. |
| 4" STLT CONDUIT | 0 LF. |
| # 3 1/2 (PB.) PULL BOX | 5 EA. |
| 200 AMP. SERVICE PAD | 1 EA. |
| STOP SIGN | 2 EA. |
| STREET NAME SIGN (2 SIGNS) | 12 EA. |
| POINT OF CONNECTION (UTILITIES) | |
| SIGHT VISIBILITY EASEMENT | |
| PROPOSED MAIL BOXES PER USPS | |

TRAFFIC DELINEATION AND SIGNAGE LEGEND

- (A) INSTALL 30" R1-1 "STOP" SIGN & (2) 12" D3 "STREET NAME" SIGNS
- (B) INSTALL (2) D3 9" CITY OF LAS VEGAS PRIVATE STREET NAME SIGNS
- (C) INSTALL R7-1APR NO PARKING
- (D) INSTALL YELLOW TYPE 1 CENTERLINE DELINEATION PER USD # 244
- (E) INSTALL YELLOW TYPE 2 CENTERLINE DELINEATION PER USD # 244
- (F) INSTALL END OF ROAD MARKERS (TYP.)
- (G) INSTALL R3-7R "RIGHT LANE MUST TURN RIGHT" SIGN
- (H) INSTALL "ARROWS" & "ONLY" USING WHITE COLORED POLYMER FILM SEE TYPICAL SPACING DETAIL ON SHEET TS1
- (I) INSTALL 8" STORAGE LANE LINE
- (J) INSTALL 4" WHITE PAINTED EDGE LINE
- (K) BUS TURN-OUT PER USD # 234.1
- (L) INSTALL TYPE 4 LANE LINE DELINEATION PER USD # 244

FOR ALL TRAFFIC NOTES, SEE GENERAL NOTE SHEET # C3, LEGEND/QUANTITIES SEE TR1

EX. UNIT 1 PARK 0.96 ACRES



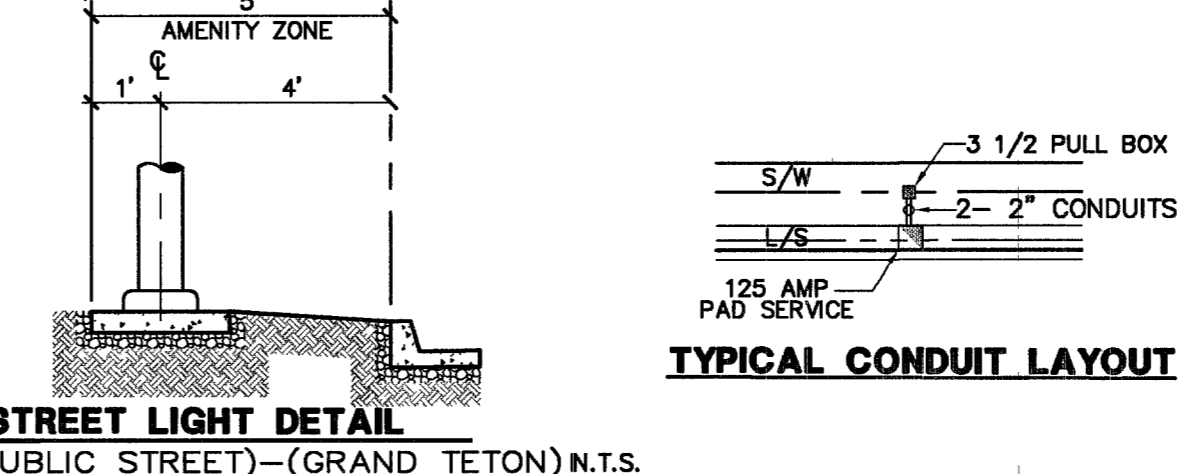
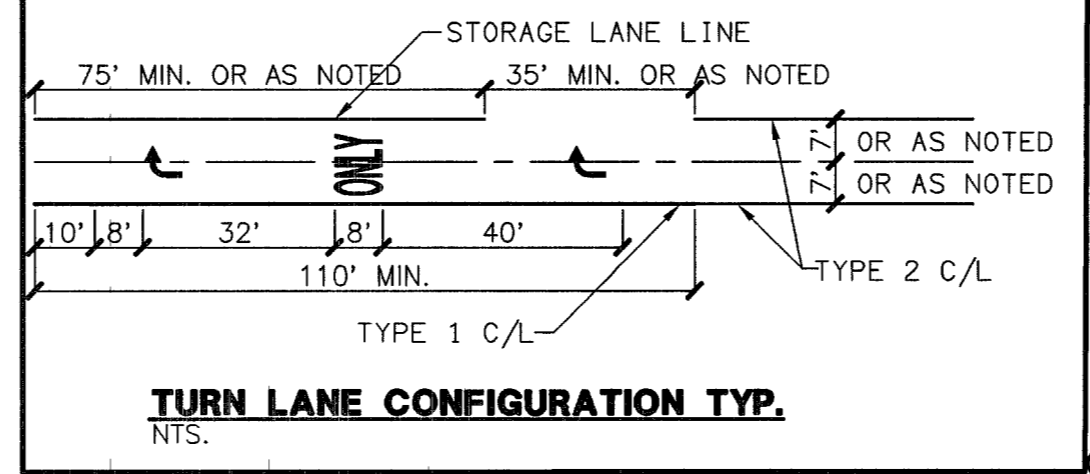
ENGINEER DISCLAIMER NOTE
UTILITY LOCATIONS SHOWN HERON ARE APPROXIMATE ONLY. IT SHALL BE THE CONTRACTOR'S RESPONSIBILITY TO DETERMINE THE EXACT HORIZONTAL AND VERTICAL LOCATION OF ALL EXISTING UNDERGROUND AND OVERHEAD UTILITIES AND NOTIFY THE DESIGN ENGINEER IMMEDIATELY OF ANY DISCREPANCIES PRIOR TO COMMENCING CONSTRUCTION.
NO REPRESENTATION IS MADE THAT ALL EXISTING UTILITIES ARE SHOWN HERON. THE ENGINEER ASSUMES NO RESPONSIBILITY FOR UTILITIES NOT SHOWN OR UTILITIES NOT SHOWN IN THEIR PROPER LOCATION.

SIGHT VISIBILITY ZONE NOTE
NOTHING OVER 24" IN HEIGHT ALLOWED IN SVZ'S EXCEPT TRAFFIC CONTROL DEVICES.

Call before you Dig 1-800-227-2800

Call before you Overhead 1-702-583-6111

Underground



APPROVAL:

NEVADA POWER COMPANY

NEVADA POWER COMPANY APPROVAL IS ONLY FOR THE PLACEMENT AND CLEARANCE OF STREET LIGHT AND SIGNAL LIGHT INSTALLATION. NEVADA POWER COMPANY ACKNOWLEDGES THAT WE HAVE RECEIVED YOUR PLANS AND WILL PROVIDE SERVICE TO ALL ELECTRICAL NEEDS ASSOCIATED WITH THIS PROJECT. NEVADA POWER COMPANY RESERVES THE RIGHT TO ADDRESS ANY EXISTING OR FUTURE CONFLICTS ONCE THE FINAL DESIGN IS COMPLETED. THE NEW SERVICE AND THE RESOLUTION OF ANY CONFLICTS WILL BE ACCOMPLISHED PURSUANT TO THE NEVADA PUBLIC UTILITY COMMISSION'S RULES AND REGULATIONS.

CITY OF LAS VEGAS

BEAZER HOMES
4670 S. FORT APACHE SUITE # 200
LAS VEGAS, NEVADA 89147
(702) 837-2100

BEAZER GRAND TETON VILLAGE UNIT 2

SIGNAL, STRIPING AND STREET LIGHTING PLAN

DRAWN BY: AUGUST, 2003
DESIGNED BY: AUGUST, 2003
CHECKED BY: D.J.G.
PROJECT NO: 5145-2
SCALE: 1"=40' HORIZ. N/A VERT.

DEBORAH KALEIKINI JOHNSON
REGISTERED ENGINEER-SITE OF NEVADA
NO. 14571
EXPIRES 06-30-07

SHEET **TS1**
25 OF 35 SHEETS
DRAWING NO. **1074789-2**