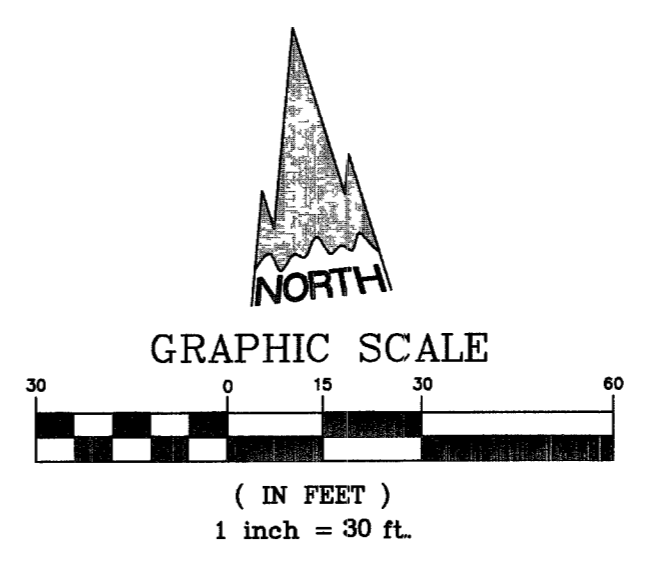
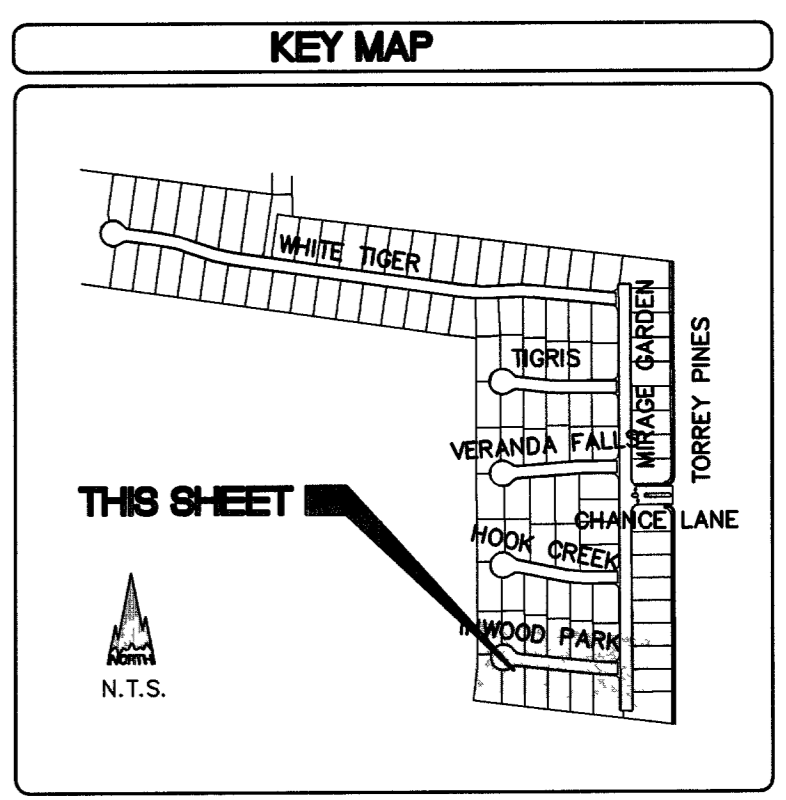


INWOOD PARK COURT
(PRIVATE STREET AND P.U.E.)

HORIZ. : 1" = 30'
VERT. : 1" = 3'

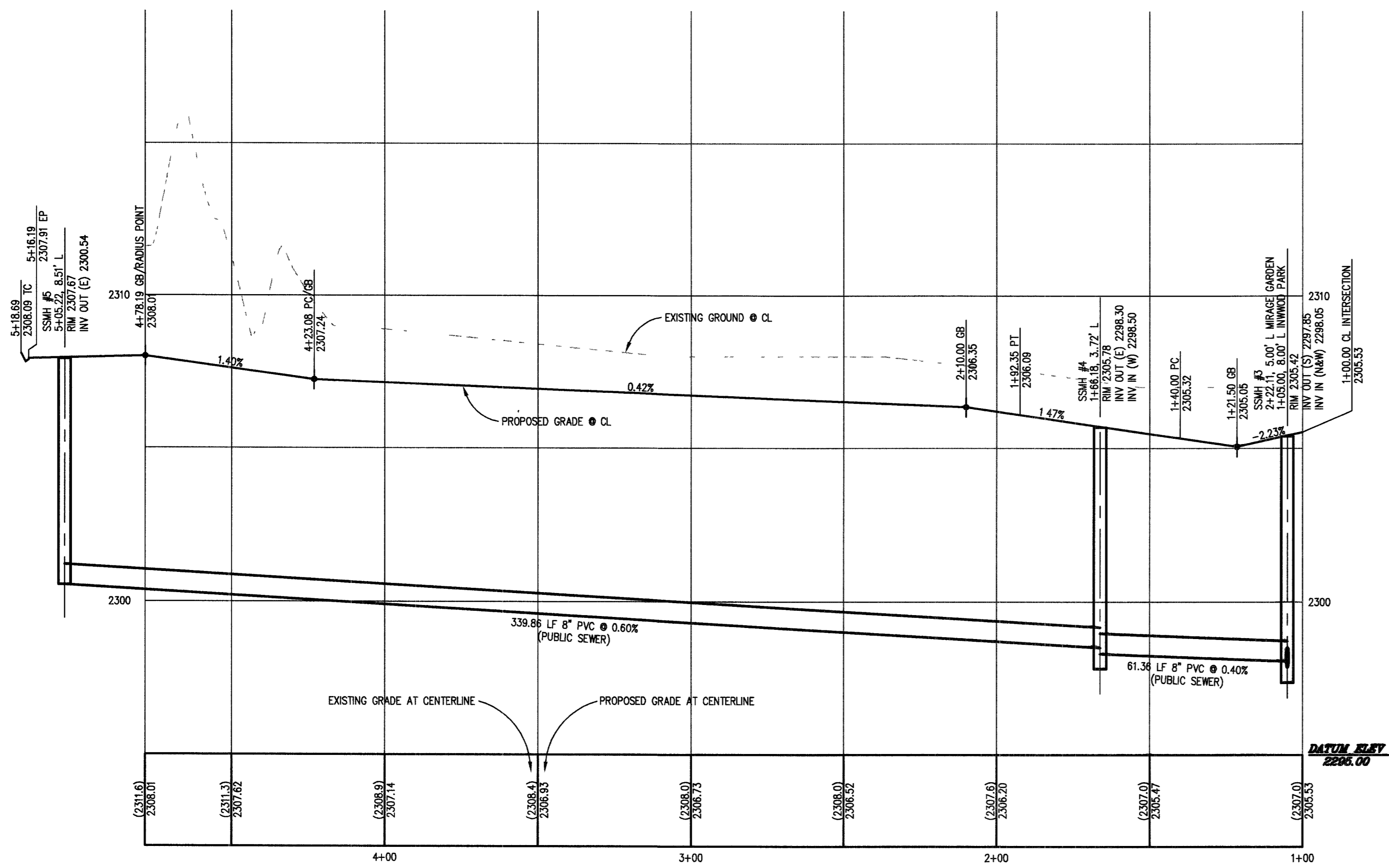


PLAN & PROFILE LEGEND

BOUNDARY	---
CENTER LINE & STATION	1+00
RIGHT-OF-WAY	---
LOT LINE	---
BACK OF CURB	---
FACE OF CURB	---
LIP OF GUTTER	---
EDGE OF PAVEMENT	---
SIDEWALK	---
EXISTING CURB	---
EDGE OF EXISTING PAVEMENT	---
EXISTING WATER MAIN	EX. 8" W.
EXISTING GAS MAIN	EX. GAS
EXISTING SEWER MAIN	EX. 8" SS
STORM DRAIN MAIN	36" RCP
STORM DRAIN LATERAL	18" RCP
EXISTING STORM DRAIN	EX. 36" SD
DRAINAGE SWALE & DIRECTION	---
SAWCUT LINE	---
1' CONTOURS & ELEVATION	---
5' CONTOURS & ELEVATION	---

CURVE TABLE (BACK OF CURB & CENTERLINE)

CURVE	LENGTH	RADIUS	DELTA	TANGENT
C1	19.08'	19.50'	50°13'34"	10.38'
C2	13.85'	19.50'	40°42'57"	7.23'
C3	16.62'	19.50'	48°49'38"	8.85'
C4	32.78'	300.00'	67°52'27"	16.40'
C5	29.45'	20.00'	84°21'54"	18.12'
C6	33.38'	20.00'	95°38'06"	22.07'
C7	21.78'	300.00'	47°59'31"	10.89'
C8	81.56'	300.00'	114°24'24"	30.86'
C9	52.35'	480.00'	67°45'56"	26.20'
C10	15.86'	19.50'	46°35'37"	8.40'
C11	17.46'	19.50'	51°18'54"	9.37'
C12	55.12'	550.00'	54°43'30"	27.58'
C13	195.62'	40.50'	276°44'31"	35.99'
C14	122.72'	500.00'	143°34'48"	81.67'
C15	117.47'	500.00'	132°32'39"	59.01'
C16	98.77'	500.00'	117°07'48"	49.55'
C17	122.50'	500.00'	140°21'44"	61.56'
C18	196.26'	40.50'	277°39'15"	35.42'
C19	15.71'	5.00'	180°00'00"	INFINITE
C20	31.42'	20.00'	90°00'00"	20.00'
C21	7.85'	5.00'	90°00'00"	5.00'
C22	196.20'	40.50'	277°34'10"	35.47'
C23	39.27'	25.00'	90°00'00"	25.00'



GRADING CONSTRUCTION NOTES

- CONSTRUCT 30" ROLL CURB PER CCUSD NO. 217A.
- CONSTRUCT "L" TYPE CURB & GUTTER PER CCUSD NO. 216.
- CONSTRUCT 5' WIDE SIDEWALK PER CCUSD NO. 234.
- CONSTRUCT "A" TYPE ISLAND CURB PER CCUSD NO. 219.
- CONSTRUCT CROSS GUTTER PER CCUSD NO. 228.
- CONSTRUCT 10' TRANSITION "L" CURB TO ROLL CURB PER DETAIL, SHT. 26.
- EXISTING FENCE TO BE REMOVED.
- CONSTRUCT 3' VALLEY GUTTER PER DETAIL, SHT. 26.
- SAWCUT EXIST. AC AND JOIN.
- CONST. SW RAMP PER CCUSD #235, CASE I, A&B=8" TYP.
- INSTALL CONCRETE PAVERS, SEE LANDSCAPE PLAN FOR PAVEMENT DETAILS AND DETAIL F, SHT. 27, FOR SUBGRADE.

PRIVATE STREET NOT ALL PRIVATE STREETS ARE P.U.E.'S, CLV PUBLIC SEWER EASEMENTS AND PUBLIC DRAINAGE EASEMENTS TO BE PRIVATELY MAINTAINED

AVOID CUTTING UNDERGROUND UTILITY LINES. IT'S COSTLY!
Call before you Dig—1-800-227-2600
UNDERGROUND SERVICE ALERT (USA) 93027

AVOID OVERHEAD POWER LINE CONTACT
Call before you OVERHEAD
1-702-227-2929
OVERHEAD SERVICE ALERT (OSA)

BENCHMARK
CLV BM 0LV90 3554 BEING A RIVET & PLATE IN TOP OF CURB 60 FT NORTH OF LONE MOUNTAIN ON EAST CURB OF TORREY PINES.
ELEVATION: 2301.17 FEET/701.3985 METERS (NAVD '88 DATUM)

BASIS OF BEARINGS
THE EAST LINE OF THE SOUTHWEST QUARTER (SW 1/4) OF SECTION 35, TOWNSHIP 19 SOUTH, RANGE 60 EAST, M.D.M., CLARK COUNTY, NEVADA, AS SHOWN BY THAT RECORD OF SURVEY ON FILE IN FILE 40 OF SURVEYS, PAGE 74 IN THE CLARK COUNTY RECORDER'S OFFICE, CLARK COUNTY, NEVADA.
SAID LINE BEARS SOUTH 00°08'24" EAST.

NOTE TO CONTRACTOR
EVIDENCE OF UNDERGROUND DRAINAGE AND/OR IRRIGATION FOUND THROUGHOUT SUBJECT PROPERTY. CONTRACTOR SHALL REMOVE OR ABANDON AS NECESSARY PRIOR TO CONSTRUCTION.
FOR STREET SECTIONS SEE SHEET 26.

APPROVALS
APPROVED FOR CONSTRUCTION
SEE COVER SHEET
LAS VEGAS VALLEY WATER DISTRICT PROJECT #111386 DATE

DR. HORTON
6645 ESCONDIDO STREET BLDG #6, SUITE 105
CLARK COUNTY, NV 89118
PHONE: (702) 435-4686 FAX: (702) 638-4700

LONE MOUNTAIN ENGINEERING
6545 JONES BLVD., SUITE 200
LAS VEGAS, NEVADA 89118
PHONE: (702) 312-9330 FAX: (702) 320-1769

PLAN & PROFILE
INWOOD PARK COURT
STA 1+00 TO 4+78.19

BAVARIA ESTATES

DATE: SHEET: DRAWN BY: DESIGNED BY: CHECKED BY: PROJECT NO: LMS000301

SHEET No. **23** OF 28
1074934