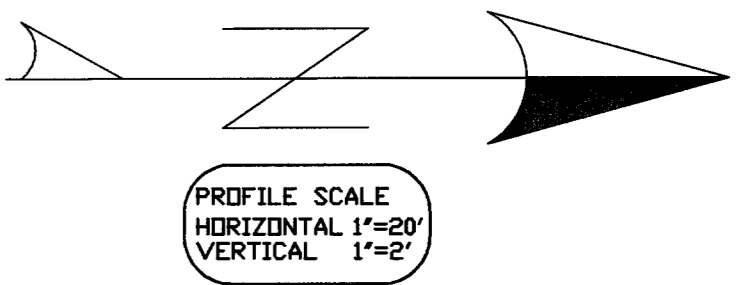
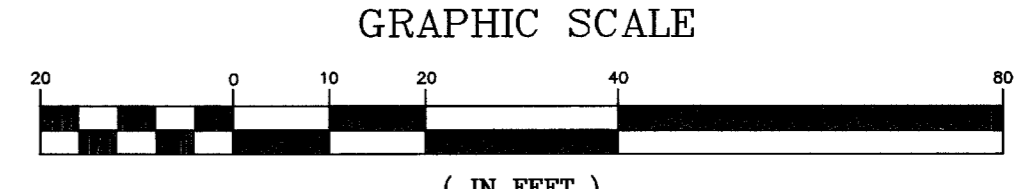
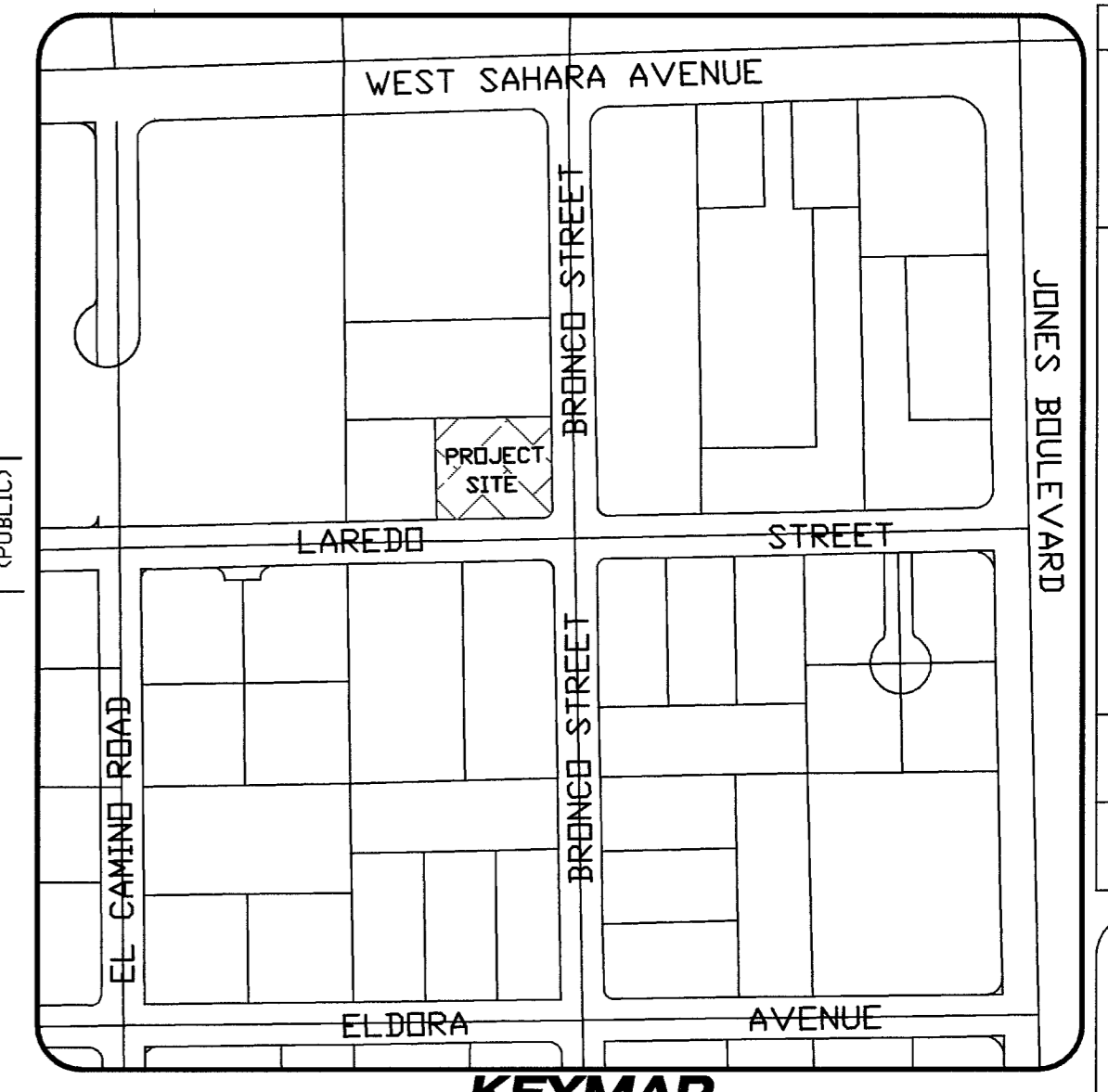


UNDEVELOPED
APN# 163-11-503-003
KOSAKA GEORGE YUZURU

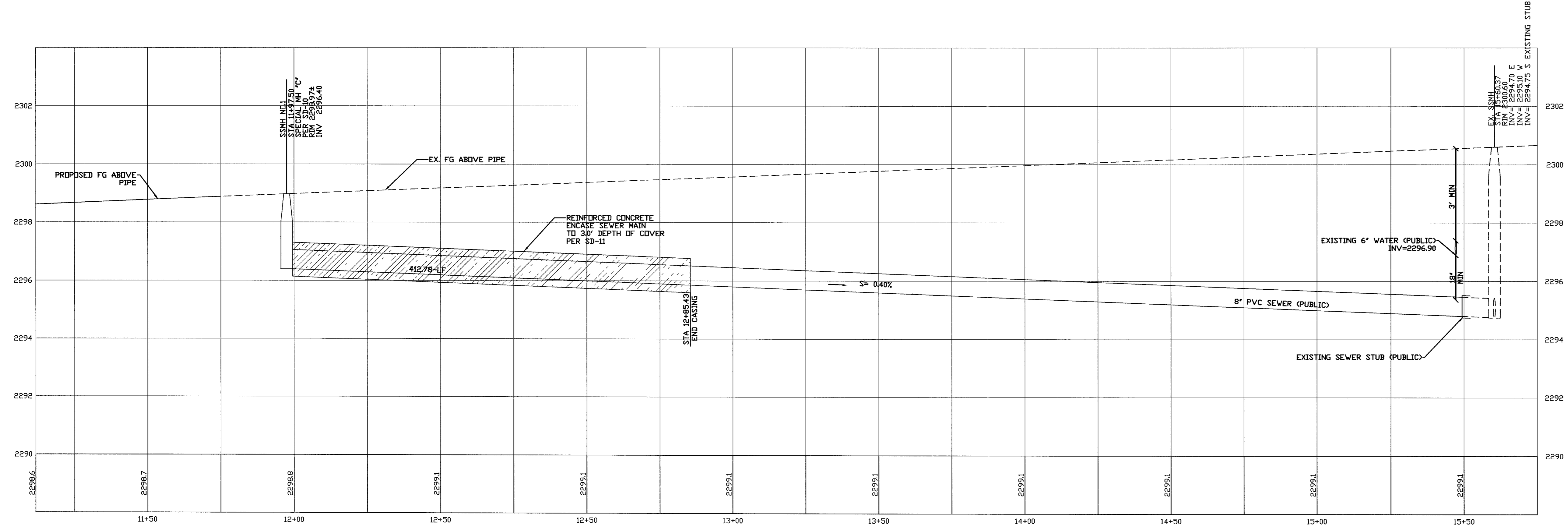
EX. COMMERCIAL
APN# 163-11-504-017
CALDWELL FAMILY 1998 TRUST
AND CALDWELL PATRICK H
AND CAROL A TRS

BRONCO STREET
(PUBLIC)

SSMH SCHEDULE				
SSMH#	REF STD#	SIZE	TMH	INV.
1	SD-10 SPECIAL MH "C"	36'	2298.97±	2296.40



- NOTES:
1. ALL MANHOLES ARE 48" TYPE 1 UNLESS OTHERWISE SPECIFIED
 2. ALL STATIONING IS BASED FROM MANHOLE TO MANHOLE
 3. ALL PIPE LENGTHS ARE BASED FROM MANHOLE TO MANHOLE



AVOID HITTING UNDERGROUND TRAFFIC SIGNAL AND STREET LIGHT SYSTEM CONDUITS IT'S COSTLY!

Call before you Dig

Underground

1-702-455-7511

CLARK COUNTY TRAFFIC OPERATIONS AND CLARK COUNTY FREIGHTWAY AND ARTERIAL SYSTEM OF TRANSPORTATION

Avoid cutting underground utility lines. It's costly.

Call before you Dig

1-800-227-2600

Avoid overhead power line contact. It's costly.

Call before you Overhead

1-702-227-2929

BY	DATE	DESCRIPTION	APPROVAL

MOMENI & ASSOCIATES, INC.
CONSULTING ENGINEERS

3011 RIGEL AVENUE
LAS VEGAS, NEVADA 89102
TEL: 702-246-8004 FAX: 702-246-8495

PROFESSIONAL ENGINEER STATE OF NEVADA

MOHAMMAD H. MOMENI
Exp: 12/31/07
CIVIL STRUCTURAL
No. 12757 MOJIB

06/01/06

MAY 06'
DATE
10101001-00
PROJECT NUMBER
ECR
DRAWN BY
MHM
CHECKED BY

PROJECT: **BRONCO PROFESSIONAL CENTER**
CLARK COUNTY, NEVADA

SEWER PLAN AND PROFILE
BRONCO STREET
STA: 11+50.00 TO 16+00.00

SHEET: **C9**

DRAWING NO. 307V965

9 OF 10
H/E/C 05-1837

92639