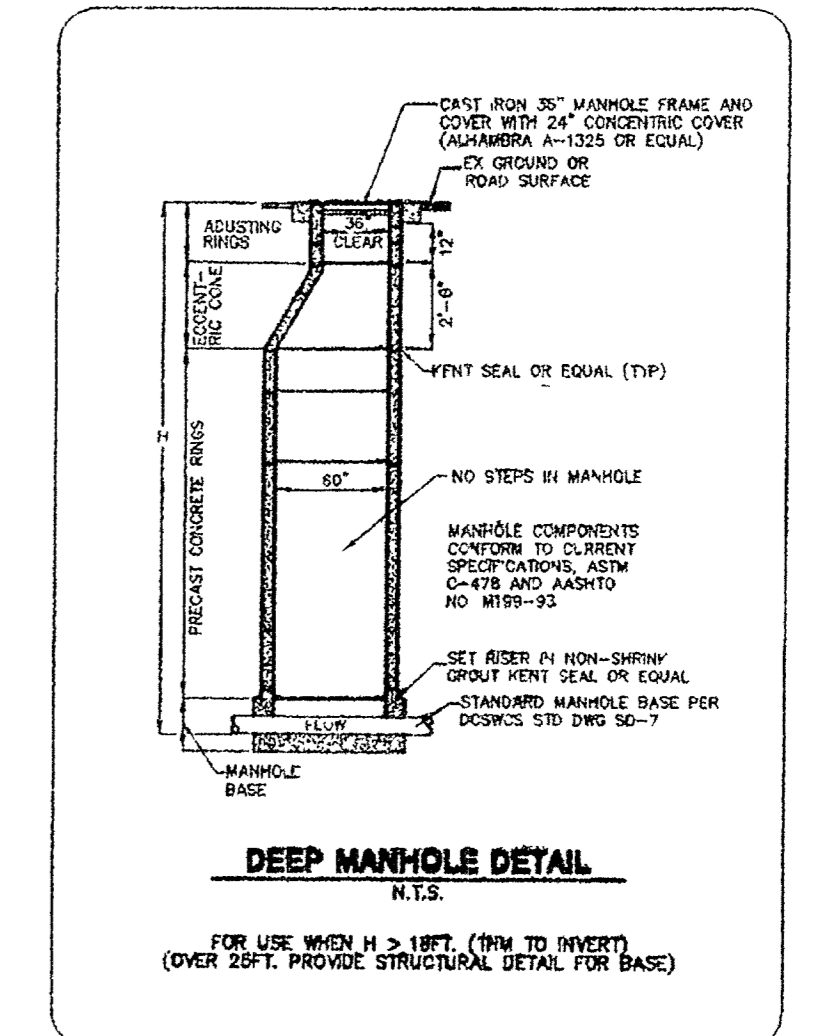
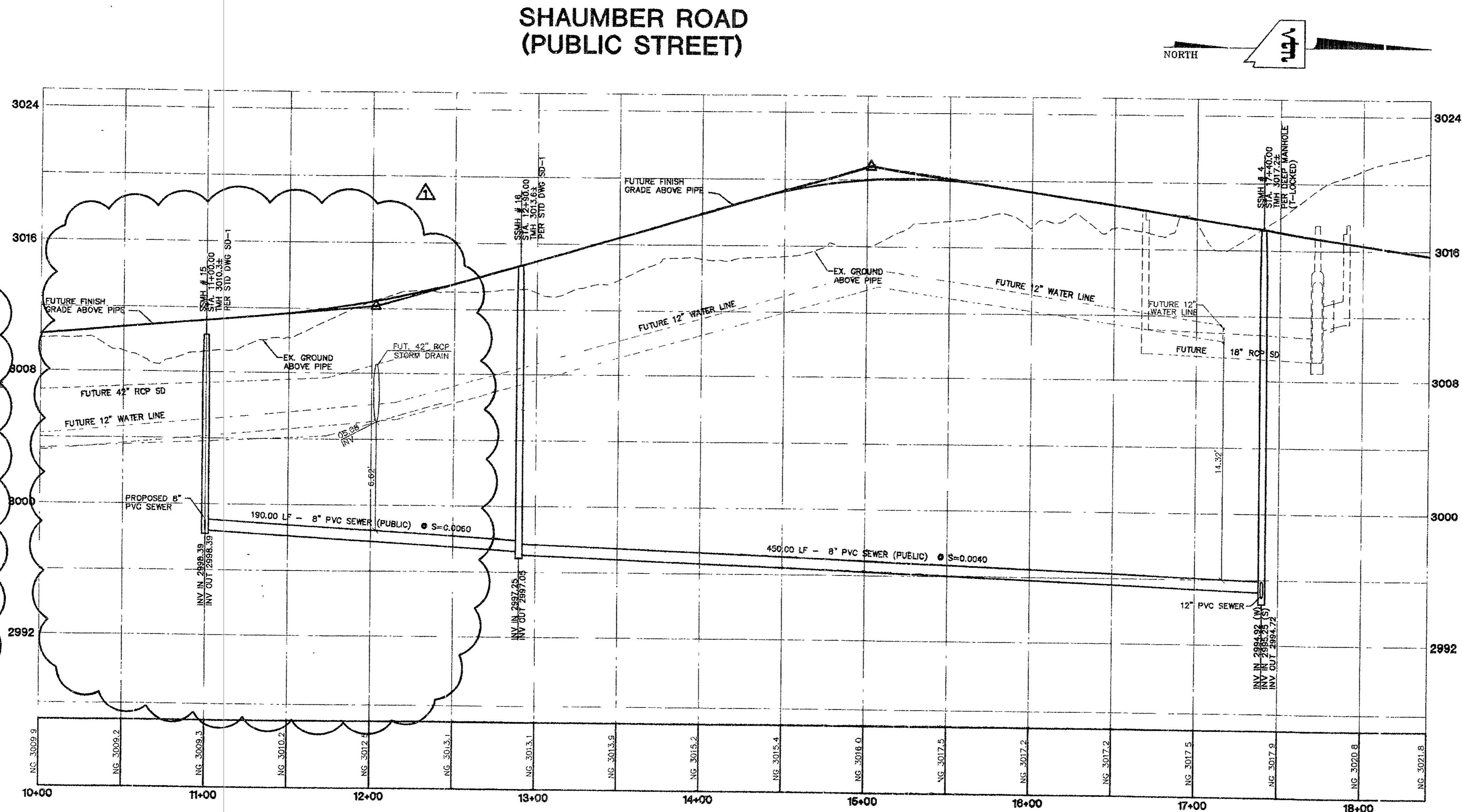
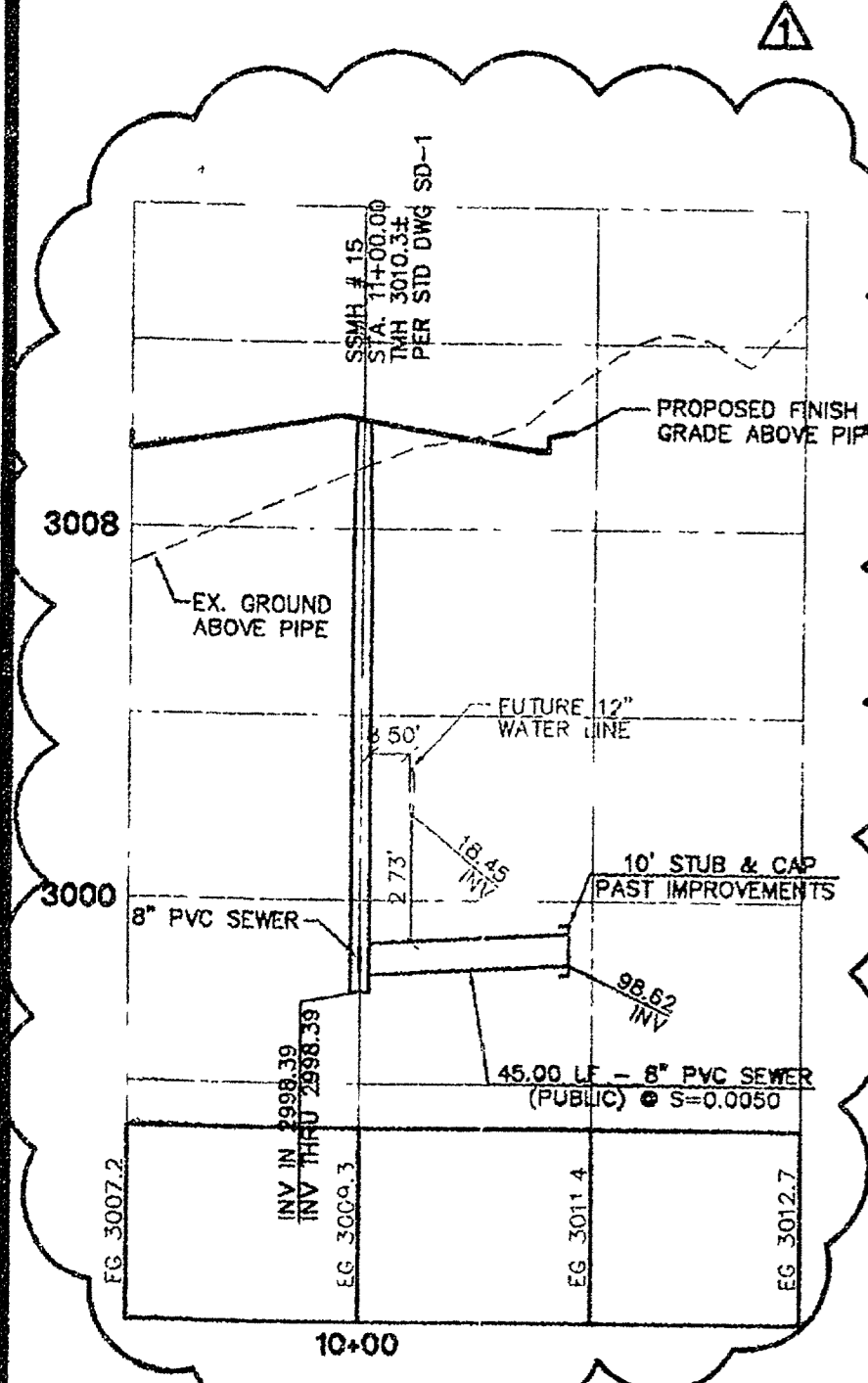


**LATERAL #4
SHAUMBER ROAD
(PUBLIC STREET)**



CONTRACTOR NOTE:
CONTRACTOR SHALL VERIFY HORIZONTAL AND VERTICAL LOCATION OF EXISTING UTILITIES AND NOTIFY THE DESIGN ENGINEER IMMEDIATELY OF ANY DISCREPANCIES PRIOR TO CONSTRUCTION.

BASIS OF BEARINGS
THE BASIS OF BEARINGS FOR THIS PROJECT IS NORTH 00°08'18" EAST BEING THE EAST LINE OF THE NORTHWEST QUARTER (NE 1/4) OF THE SECTION 24, TOWNSHIP 19 SOUTH, RANGE 59 EAST, M.D.M., CLARK COUNTY, NEVADA, AS SHOWN ON A RECORD OF SURVEY ON FILE IN THE CLARK COUNTY, NEVADA, RECORDER'S OFFICE IN FILE 123 AT PAGE 32.

PROJECT BENCHMARK
PROJECT DATUM: NORTH AMERICAN VERTICAL DATUM OF 1988 (NAVD88)
CLARK COUNTY VERTICAL CONTROL: 1000-6N6
NAVD88 ELEVATION: 787.794 METERS (2584.62 FEET)
RIVET AND SQUARE ALUMINUM PLATE IN A CONCRETE CYLINDER, LOCATED 25' SOUTH & 50' EAST OF GRAND CANYON DRIVE AND RED COACH AVENUE, 1' WEST OF ELECTRICAL VAULT.

CITY OF LAS VEGAS BENCHMARK
DATUM: NORTH AMERICAN VERTICAL DATUM OF 1988 (NAVD88)
CITY OF LAS VEGAS BENCHMARK: BLV88-135ES
NAVD88 ELEVATION: 866.606 METERS (2853.03 FEET)
RIVET AND PLATE IN CONCRETE CYLINDER NW CORNER OF HUALAPAI AND ELKHORN

NOTE: ADD 0.34' TO ABOVE CITY OF LAS VEGAS BENCHMARK: BLV88-135ES TO MATCH ORIGINAL PROJECT BENCHMARK, CLARK COUNTY BENCHMARK 1000-6N6 (2584.62 FEET) AS SHOWN ON RECORD OF SURVEY FILE 124 PAGE 94.

REV	DATE	BY	REVISION
1	4/12/05	SSP	SEWER LATERAL
2			
3			
4			
5			

CLIFFS EDGE LLC
3465 CLIFF SHADOWS PARKWAY, SUITE 200
LAS VEGAS, NEVADA 89129
(702) 777-1221

CITY OF LAS VEGAS, NEVADA
2727 SOUTH RAINBOW BOULEVARD LAS VEGAS, NEVADA 89146-5148
PH. (702) 873-7550 FAX (702) 882-2897

novada
CONSULTING ENGINEERS & LAND SURVEYORS

**SEWER PLAN AND PROFILE
SHAUMBER ROAD
STA. 9+00.00 TO 18+40.00**

**CLIFFS EDGE
GRAND TETON DRIVE
SEWER IMPROVEMENTS**

DRAWN BY: APRIL '04
S.P.
DESIGNED BY: APRIL '04
B.F.
CHECKED BY: APRIL '04
L.M.
PROJECT NO: 5989
SCALE: 1" = 40' HORIZ.
1" = 4' VERT.

EXPIRES 06-30-05

PROFESSIONAL ENGINEER STATE OF NEVADA
DANIEL H. HAD
NO. 12811
CIVIL

SHEET
557
10 OF 13 SHEETS
DRAWING NO.
107V4816-03-B

Call before you Underground
1-702-455-7511
CLARK COUNTY TRAFFIC OPERATIONS AND 1-702-229-6611
LAS VEGAS AREA COMPUTERIZED TRAFFIC SYSTEM

Call before you Dig
1-800-227-2600

Call before you Overhead
1-702-221-2929