

WATER GENERAL NOTES:

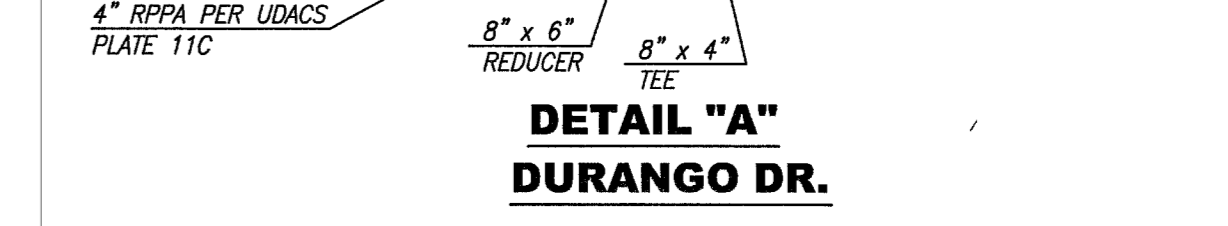
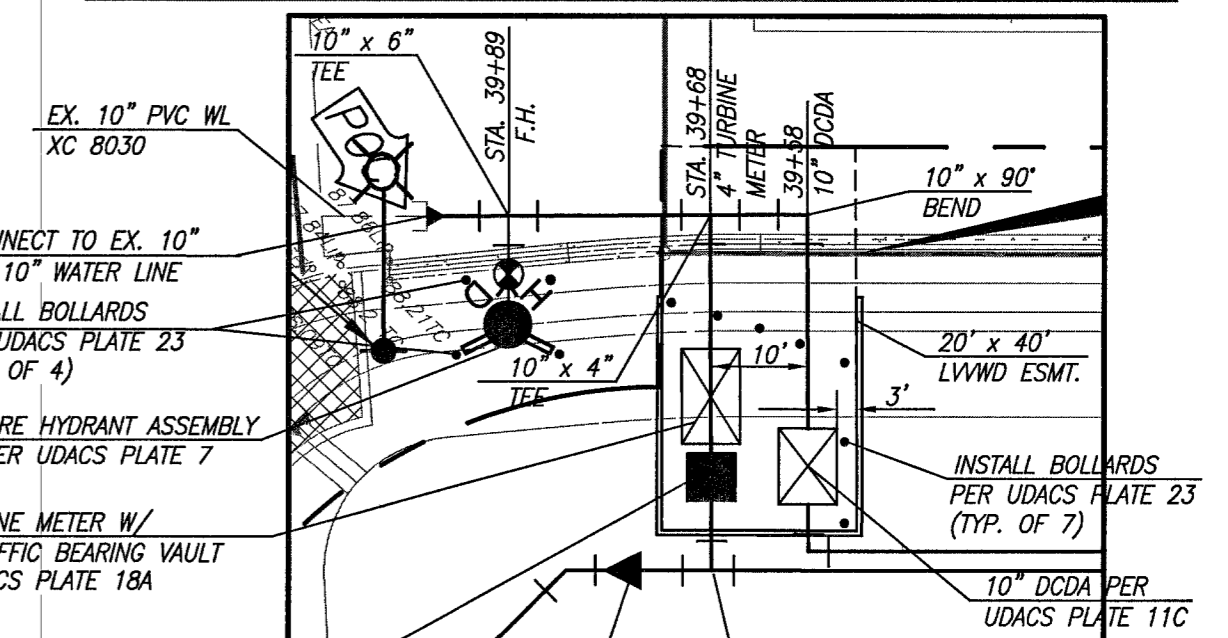
- 6" FIRE HYDRANT ASSEMBLY PER U.D.A.C.S. PLATE NO. 7. PROVIDE A MIN. OF 3' CLEARANCE AROUND FIRE HYDRANT.
- 10" DOUBLE CHECK DETECTOR ASSEMBLY PER U.D.A.C.S. PLATE NO. 11-C.
- 4" REDUCED PRESSURE PRINCIPLE ASSEMBLY (RPPA) PER U.D.A.C.S. PLATE NO. 11-C.
- REDUCERS PER U.D.A.C.S. PLATE NO. 3.
- GATE VALVES PER U.D.A.C.S. PLATE NO. 3 AND NO. 8.
- BENDS AND TEES PER U.D.A.C.S. NO. 5.
- REFER TO U.D.A.C.S. PLATE NO. 15 AND 16 FOR STORM DRAIN AND WATER AND WASTEWATER CROSSINGS.
- REFER TO SHEET C6.1 FOR GENERAL NOTES.

[Hatched Box Symbol] = LIMITS OF FIRE LANE (REFER TO PAVING SHEETS)

FIRE FLOW CALCULATIONS

FIRE FLOW REQUIREMENT IS 3938 GALLONS PER MINUTE AT 20 PSI RESIDUAL PRESSURE. BASED ON:

SQUARE FOOTAGE:	235,700
LARGEST AREA BETWEEN 4-HOUR AREA SEPARATION WALLS:	N/A
BUILDING HEIGHT:	132'
NUMBER OF STORIES:	8 MAX
TYPE OF CONSTRUCTION:	1A REDUCE TO 1B PER IBC 403.3.1
OCCUPANCY:	1-2
FULL AUTOMATIC FIRE SPRINKLER SYSTEM:	<input checked="" type="checkbox"/> YES <input type="checkbox"/> NO
REVIEWED BY:	LAS VEGAS FIRE DEPARTMENT
DATE:	



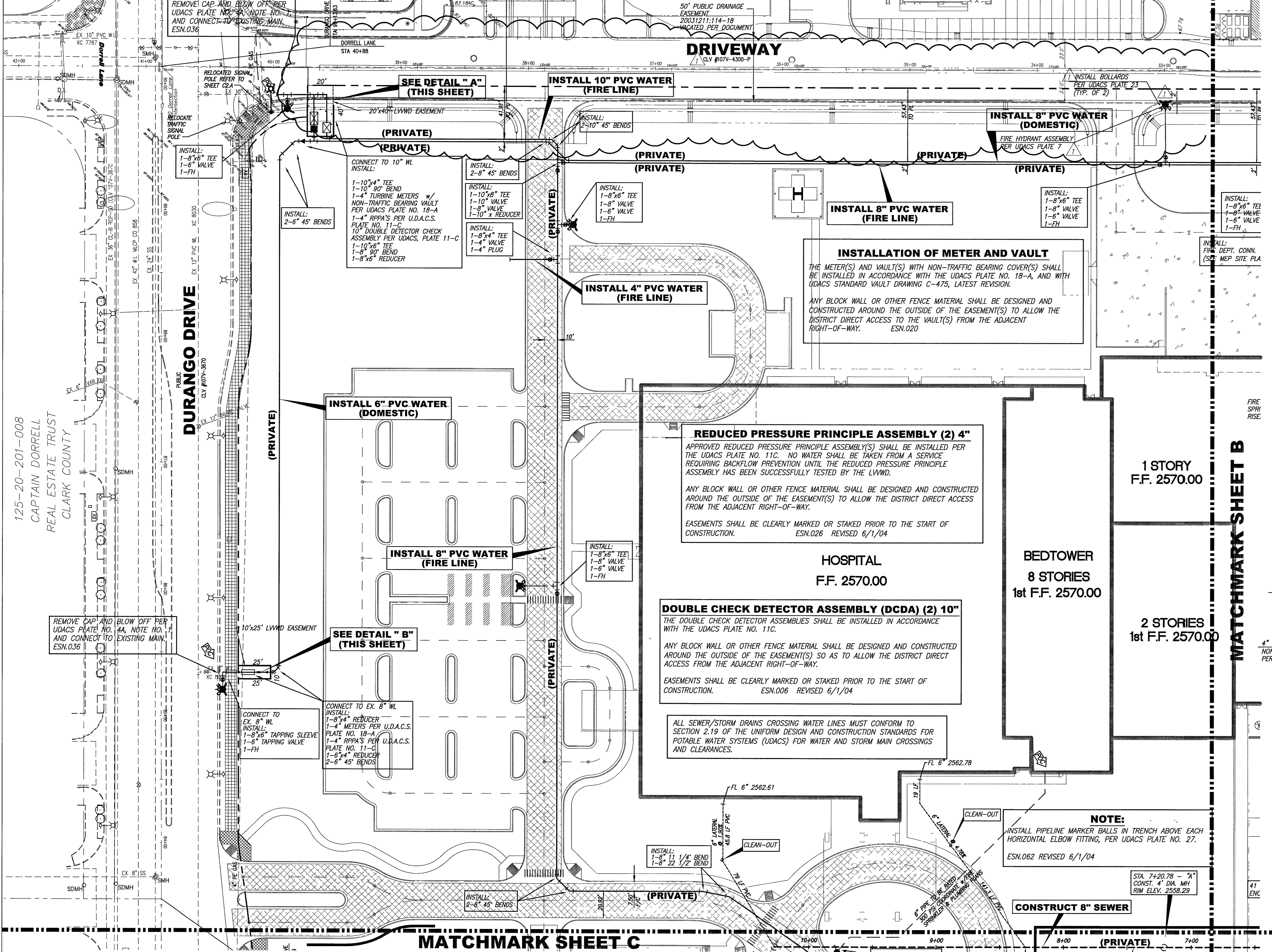
BASIS OF BEARING

THE BASIS OF BEARING IS A LINE BETWEEN THE N1/4 COR. OF SEC. 20, T. 19 S., R. 60 E., M.D.M., AND THE E1/16 COR. OF SAID SEC. 20, AS SHOWN ON EXHIBIT B OF DOC. 20030131:03151, WHICH IS THE DEDICATION OF ELKHORN ROAD, WHICH BEARS S 89°42'15" E.

CLV BENCHMARK #BLV90-20N6
RIVET & PLATE IN CONCRETE CYLINDER NE CORNER OF EL CAPITAN & DORRELL
ELEVATION: 788.9015 METERS, 2588.25 FEET

DESCRIPTION OF REVISIONS:
REVISED WATER GENERAL NOTES AND FIRE FLOW CALCULATIONS. REVISED WATER CONNECTIONS IN DETAIL A & B. ADDED FIRE HYDRANT ALONG DORRELL LANE. ADDED CLEAN-OUTS AND IDENTIFIED SLOPE LENGTHS AND PIPE TYPE TO SANITARY SEWER LATERALS. ADDED LVWD STANDARD NOTES. ADDED SANITARY SEWER NOTES.

REV.	DESCRIPTION:	DATE:	BY:



INSTALLATION OF METER AND VAULT

THE METER(S) AND VAULT(S) WITH NON-TRAFFIC BEARING COVER(S) SHALL BE INSTALLED IN ACCORDANCE WITH THE UDACS PLATE NO. 18-A, AND WITH UDACS STANDARD VAULT DRAWING C-475, LATEST REVISION.

ANY BLOCK WALL OR OTHER FENCE MATERIAL SHALL BE DESIGNED AND CONSTRUCTED AROUND THE OUTSIDE OF THE EASEMENT(S) TO ALLOW THE DISTRICT DIRECT ACCESS TO THE VAULT(S) FROM THE ADJACENT RIGHT-OF-WAY. ESN.020

REDUCED PRESSURE PRINCIPLE ASSEMBLY (2) 4"

APPROVED REDUCED PRESSURE PRINCIPLE ASSEMBLY(S) SHALL BE INSTALLED PER THE UDACS PLATE NO. 11C. NO WATER SHALL BE TAKEN FROM A SERVICE REQUIRING BACKFLOW PREVENTION UNTIL THE REDUCED PRESSURE PRINCIPLE ASSEMBLY HAS BEEN SUCCESSFULLY TESTED BY THE LVWD.

ANY BLOCK WALL OR OTHER FENCE MATERIAL SHALL BE DESIGNED AND CONSTRUCTED AROUND THE OUTSIDE OF THE EASEMENT(S) TO ALLOW THE DISTRICT DIRECT ACCESS FROM THE ADJACENT RIGHT-OF-WAY.

EASEMENTS SHALL BE CLEARLY MARKED OR STAKED PRIOR TO THE START OF CONSTRUCTION. ESN.026 REVISED 6/1/04

DOUBLE CHECK DETECTOR ASSEMBLY (DCDA) (2) 10"

THE DOUBLE CHECK DETECTOR ASSEMBLY(S) SHALL BE INSTALLED IN ACCORDANCE WITH THE UDACS PLATE NO. 11C.

ANY BLOCK WALL OR OTHER FENCE MATERIAL SHALL BE DESIGNED AND CONSTRUCTED AROUND THE OUTSIDE OF THE EASEMENT(S) SO AS TO ALLOW THE DISTRICT DIRECT ACCESS FROM THE ADJACENT RIGHT-OF-WAY.

EASEMENTS SHALL BE CLEARLY MARKED OR STAKED PRIOR TO THE START OF CONSTRUCTION. ESN.006 REVISED 6/1/04

ALL SEWER/STORM DRAINS CROSSING WATER LINES MUST CONFORM TO SECTION 2.19 OF THE UNIFORM DESIGN AND CONSTRUCTION STANDARDS FOR POTABLE WATER SYSTEMS (UDACS) FOR WATER AND STORM MAIN CROSSINGS AND CLEARANCES.

NOTE:

INSTALL PIPELINE MARKER BALLS IN TRENCH ABOVE EACH HORIZONTAL ELBOW FITTING, PER UDACS PLATE NO. 27. ESN.062 REVISED 6/1/04

SANITARY SEWER NOTES:

- 48" DIA. STANDARD ECCENTRIC MANHOLE PER D.C.S.W.C.S. DWG No. SD-1.
- CLEANOUT PER PLAN WITH NEENAH H-20 TRAFFIC LOAD RATED COVERS OR APPROVED EQUAL (SEE DETAIL ON SHEET C6.B)
- POC; SEE PLUMBING PLANS FOR CONTINUATION OF SANITARY SEWER STUB SIZES. PROVIDE REDUCER WHERE NECESSARY.
- 48" DIA. TYPE C SAMPLING MANHOLE PER D.C.S.W.C.S. DWG No. SD-28.
- DEEP LATERAL CONNECTION PER D.C.S.W.C.S. DWG No. SD-18.
- PIPE BEDDING PER D.C.S.W.C.S. DWG No. SD-11 AND TRENCH SECTION PER D.C.S.W.C.S. DWG No. SD-16 AND 16A.

WATER MAIN JOINT DEFLECTION (PVC, 4" - 24")

PVC PIPE SHALL BE DEFLECTED AT THE JOINT ONLY. THE MAXIMUM ALLOWABLE DEFLECTION SHALL BE ONE (1) DEGREE PER JOINT WITH A MINIMUM RADIUS OF CURVATURE OF 1,150 FEET, PER UDACS 2.06.01 AND 2.06.02.

FOR CHANGES IN DIRECTION EXCEEDING THE MAXIMUM ALLOWABLE JOINT DEFLECTION, FITTINGS SHALL BE USED. ESN.059 REVISED 6/1/04

CAUTION TO CONTRACTOR

THE CONTRACTOR SHALL BE RESPONSIBLE TO INVESTIGATE AND VERIFY THE ACTUAL LOCATION AND DEPTH OF ALL EXISTING UNDERGROUND FACILITIES AT LEAST 48 HOURS IN ADVANCE OF THE PERFORMANCE OF ANY WORK

Avoid cutting underground utility lines. It's costly.

Avoid overhead power line contact. It's costly.

Call before you Dig
89078
1-800-227-2600

Call before you Overhead
1-702-593-6111

Call before you UnderGround
1-702-455-7511
CLARK COUNTY TRAFFIC OPERATIONS AND
1-702-229-6611

L.V.V.W.D. APPROVAL

LAS VEGAS VALLEY WATER DISTRICT, PROJ. 110291

DATE