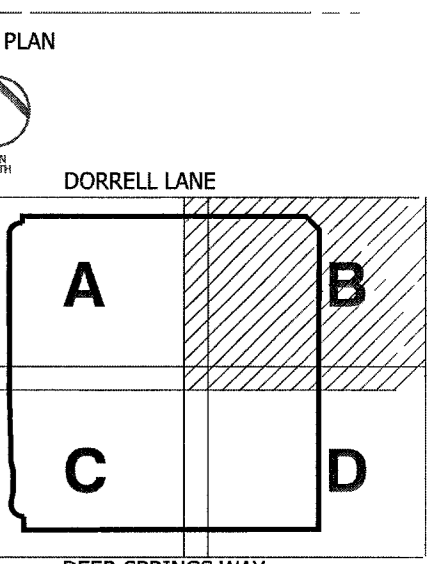


DATE: 3/9/06
HKS JOB NO. 8849



DATE: 20 Jun 05

BID/PERMIT ISSUE 20 JUN 05

RESPONSE TO COMMENTS - 24 AUG 05

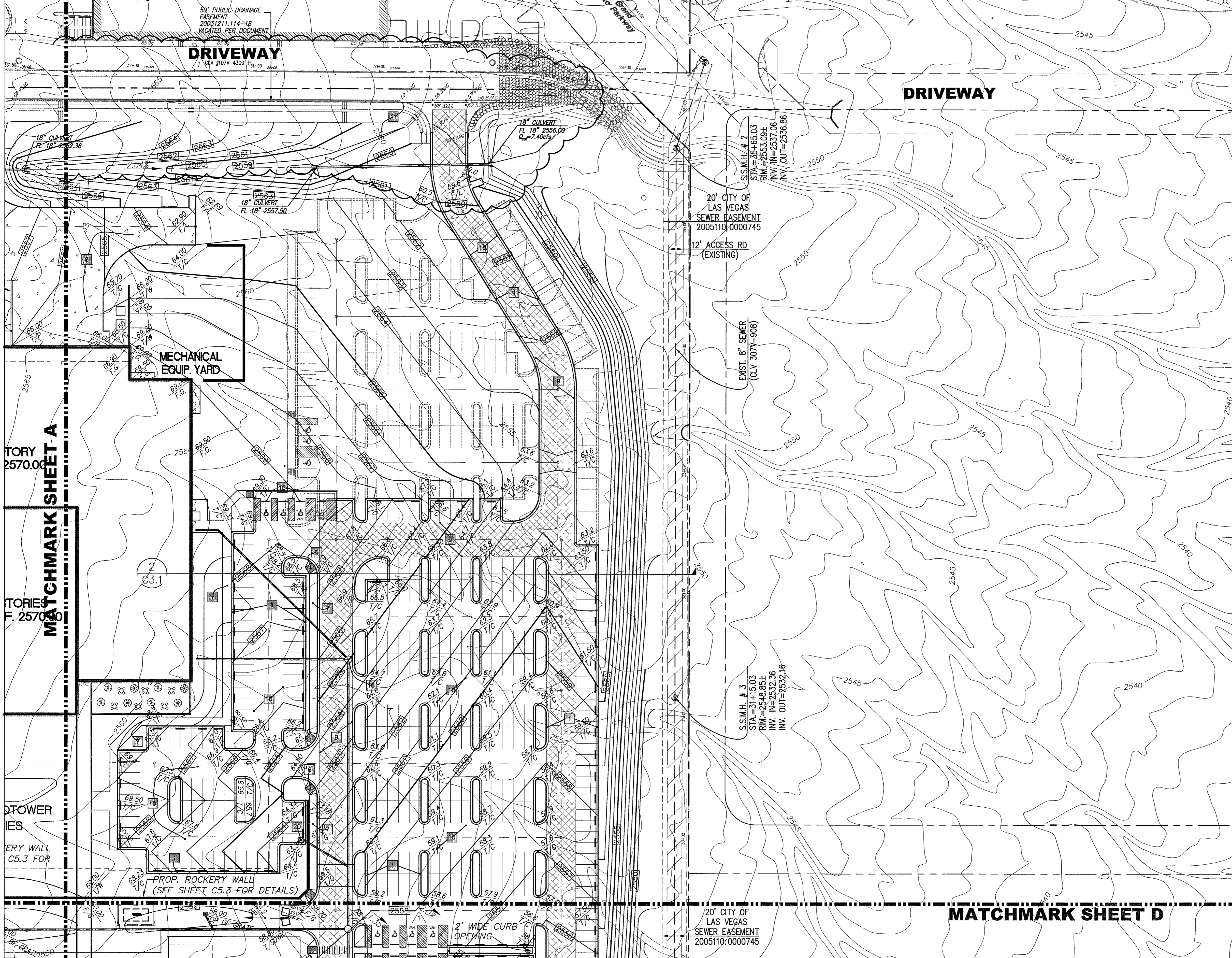
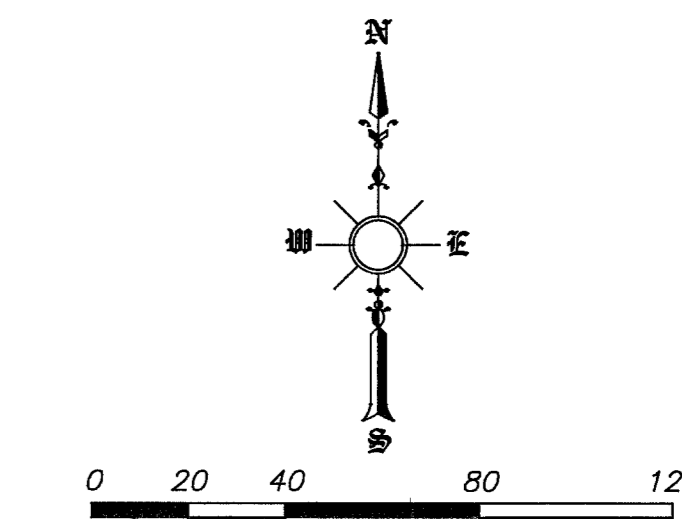
FINAL SUBMITTAL 31 OCT 05

SHEET TITLE

GRADING PLAN

SHEET NO. **C3.B**

15 OF 43



CONSTRUCTION NOTES

- (NOT ALL KEY NOTES ARE USED ON THIS DRAWING)
- CONSTRUCT "L" TYPE CURB AND GUTTER PER C.C.A.U.S.D. #216.
 - CONSTRUCT COMMERCIAL/INDUSTRIAL DRIVEWAY PER C.C.A.U.S.D. #225 WITH GEOMETRICS OF #222A. CONSTRUCT 8" CROSS GUTTER PER C.C.A.U.S.D. #228.
 - CONSTRUCT CONCRETE SIDEWALK PER C.C.A.U.S.D. #234.
 - CONSTRUCT SIDEWALK RAMP CASE II PER C.C.A.U.S.D. #235.
 - CONSTRUCT 2" UNDER SIDEWALK DRAIN PER C.C.A.U.S.D. #236.
 - CONSTRUCT ON-SITE SIDEWALK RAMP PER DETAIL ON SHEET C2.1.
 - CONSTRUCT 6" ON-SITE SIDEWALK PER DETAIL ON SHEET C2.1. (SEE CIVIL PLAN SHEET C2.1 FOR FINISHES AND JOINT LAYOUT).
 - CONSTRUCT SIX INCH (6") CONCRETE PAVEMENT PER "CONCRETE PAVEMENT DETAIL" ON SHEET C2.1.
 - CONSTRUCT THREE INCH (3") ASPHALT PAVEMENT WITH CONCRETE CURB AND GUTTER PER ASPHALT PAVEMENT DETAIL ON SHEET C2.1.
 - CONSTRUCT TWO INCH (2") ASPHALT PAVEMENT WITH CONCRETE CURB AND GUTTER PER ASPHALT PAVEMENT DETAIL ON SHEET C2.1.
 - CONSTRUCT THREE INCH (3") ASPHALT PAVEMENT PER ASPHALT PAVEMENT DETAIL ON SHEET C2.1.
 - CONSTRUCT HELISTOP PAD PER DETAIL ON SHEET C2.1.
 - CONSTRUCT CONCRETE VALLEY GUTTER PER DETAIL ON SHEET C2.1.
 - PLANTING AREA REFER TO LANDSCAPE PLANS.
 - INSTALL PRECAST BUMPER BLOCK PER C.C.A.U.S.D. #238.
 - CONSTRUCT OUTFALL NO. 1 PER DETAIL ON SHEET C5.3.
 - CONSTRUCT OUTFALL NO. 2 PER DETAIL ON SHEET C5.3.
 - CONSTRUCT TYPE 1-A MANHOLE PER C.C.A.U.S.D. #404 ON SHEET C5.6.
 - CONSTRUCT TYPE CM DROP INLET PER DETAIL ON SHEET C5.6.
 - CONSTRUCT 15"x30" TYPE 3 DROP INLET PER N.D.O.T. DETAIL ON SHEET R-4.3.1.
 - CONSTRUCT ADS AREA DRAIN PER DETAIL ON SHEET C5.5.
 - CONSTRUCT CONCRETE FLUME PER DETAIL ON SHEET C5.5.
 - INSTALL ADS FLARED END SECTION PER DETAIL ON SHEET 5.5.

LEGEND

- 2576 — PROP. 5' CONTOUR
- 2571 — PROP 1' CONTOUR
- 2575 — EX. 5' CONTOUR
- - - - - EX. 1' CONTOUR
- XXXXXX PROP. ASPHALT PAVING
- XXXXXX PROP. CONCRETE PAVING
- XX.XX EX. TOP OF CURB
- XX HP HIGH POINT
- XX.XX B/W BOTTOM OF WALL
- XX.XX T/SDWK TOP OF SIDEWALK
- XX.XX T/P TOP OF PAVEMENT
- XX F.G. FINISHED GRADE
- XX F/L FLOWLINE

NOTES

- REFER TO GEOTECH RPT FOR GRADING
- REFER TO LANDSCAPE PLANS FOR GROUND COVER

BASIS OF BEARING

THE BASIS OF BEARING IS A LINE BETWEEN THE N1/4 COR. OF SEC. 20, T. 19 S., R. 60 E., M.D.M., AND THE E1/16 COR. OF SAID SEC. 20, AS SHOWN ON EXHIBIT B OF DOC. 20030131:03151, WHICH IS THE DEDICATION OF ELKHORN ROAD, WHICH BEARS S 89°42'15" E.

CLV BENCHMARK #BLV90-20N6
RIVET & PLATE IN CONCRETE CYLINDER NE CORNER OF EL CAPITAN & DORRELL
ELEVATION: 788.9015 METERS, 2588.25 FEET

GRADING PLAN CERTIFICATION:

DESCRIPTION OF REVISIONS:
GRADING WAS REVISED ALONG ACCESS DRIVE. CONSTRUCTION NOTES ADDED. NOTES REMOVED AND REFERENCE TO SOILS REPORT ADDED.

1. *Richard Carson, Jr.* 3/9/06 CERTIFY THAT THIS GRADING PLAN
Richard Carson, Jr., P.E. No. 14870 Date
IS IN CONFORMANCE WITH APPROVED DRAINAGE STUDY FOR THIS SITE ON FILE WITH
THE CITY OF LAS VEGAS. DS3822

CAUTION TO CONTRACTOR
THE CONTRACTOR SHALL BE RESPONSIBLE TO INVESTIGATE AND VERIFY THE ACTUAL LOCATION AND DEPTH OF ALL EXISTING UNDERGROUND FACILITIES AT LEAST 48 HOURS IN ADVANCE OF THE PERFORMANCE OF ANY WORK.

Avoid cutting underground utility lines. It's costly.

Avoid overhead power line contact. It's costly.

Call before you Dig 800-74 D I G 1-800-227-2600

Call before you OVERHEAD 1-702-593-6111

Call before you UnderGround 1-702-455-7511 CLARK COUNTY TRAFFIC OPERATIONS AND 1-702-229-6611

14128-GRD.DWG