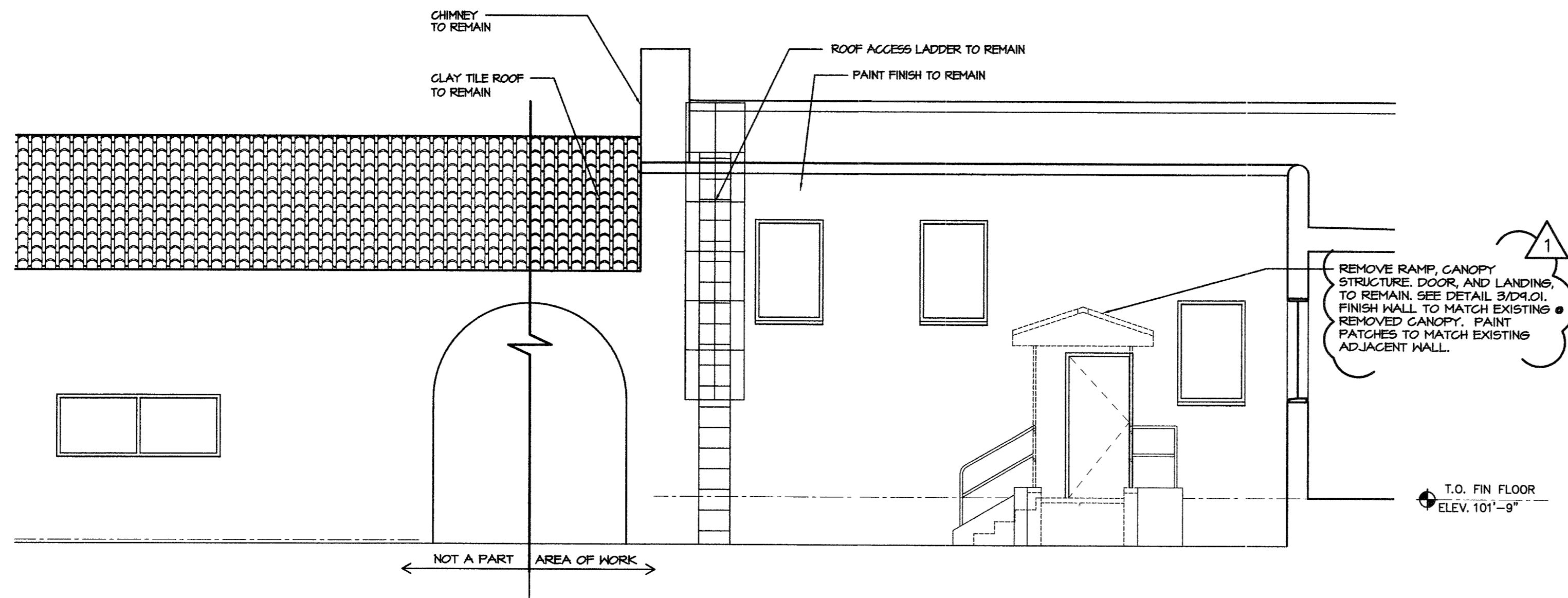


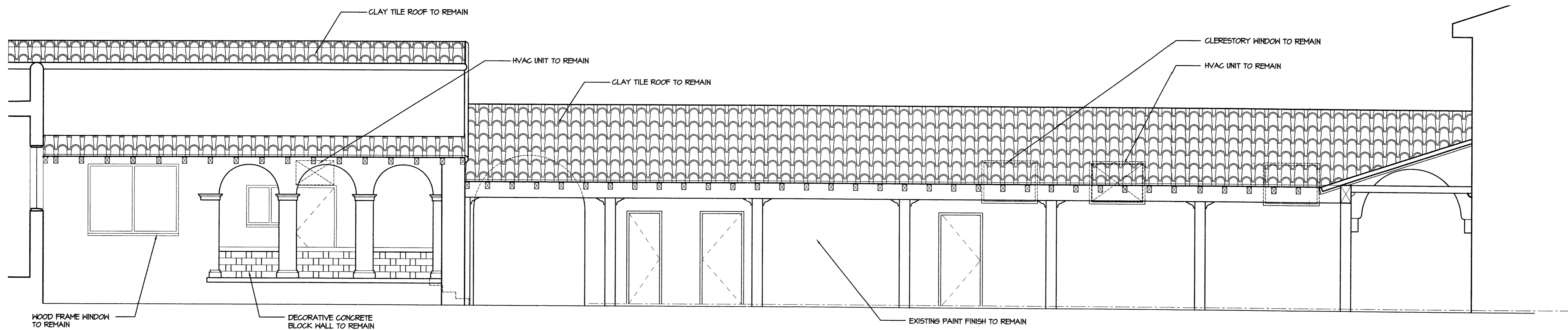
4 EAST ELEVATION (COURTYARD-WATER FOUNTAIN)

SCALE: 1/4" = 1'-0"



5 NORTH ELEVATION (COURTYARD)

SCALE: 1/4" = 1'-0"



6 NORTH ELEVATION (COURTYARD)

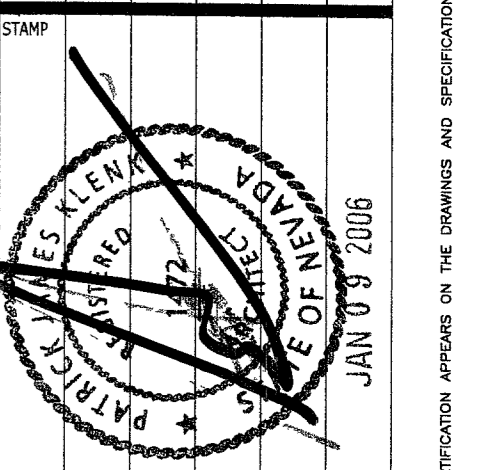
SCALE: 1/4" = 1'-0"

87654

REVISIONS
03.30.05
CLARIFICATION REVISIONS

CONSULTANT
WAGNER ARCHITECTS
ARCHITECTURE • PLANNING • INTERIOR DESIGN
701 BRIDGER AVE., SUITE 400 LAS VEGAS, NEVADA 89101
TELEPHONE: (702) 878-0000 FAX: (702) 878-8430
www.wagnarchitects.com

5TH STREET SCHOOL
400 SOUTH LAS VEGAS BOULEVARD
LAS VEGAS, NEVADA 89101
ELEVATIONS



OWNER: CITY OF LAS VEGAS
DEPARTMENT OF PUBLIC WORKS
ARCHITECTURAL SERVICES

400 EAST STEWART AVENUE
LAS VEGAS, NEVADA 89101
PHONE: (702) 229-6535
FAX: (702) 384-4846
TDD: (702) 386-9108

DRAWN: JLR
FILE: 04148_n802_demo.dwg
DATE: 01/01/05
SCALE: AS NOTED
BD NO: 05.03/01/05
CLDWG NO: 00-60C

12
SHEET NO: D6.02

REVISED 8/27/03

CONSTRUCTION DOCUMENTS (AS BUILTS - PHASE I)