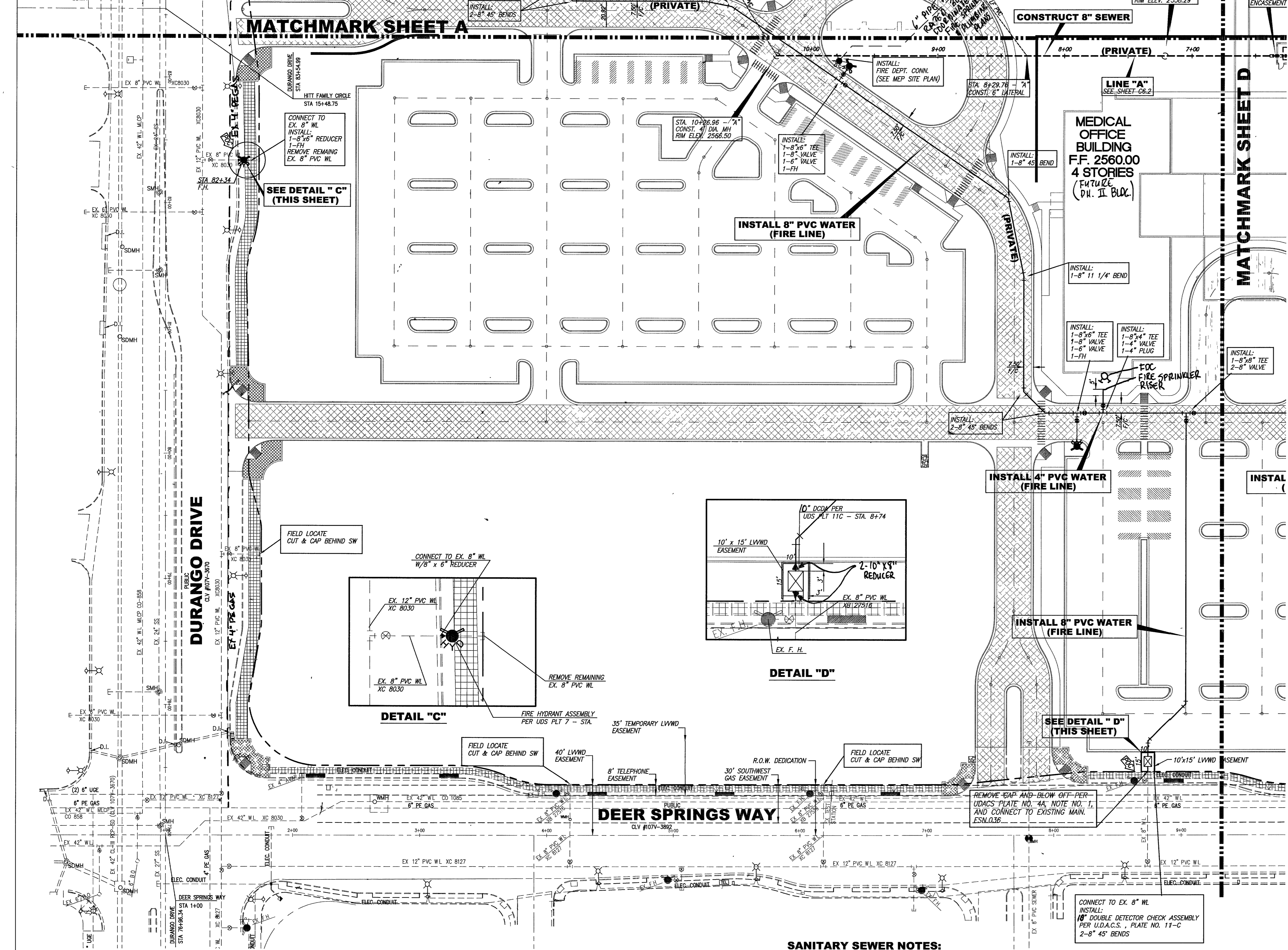


MATCHMARK SHEET A

MATCHMARK SHEET D



- WATER GENERAL NOTES:**
- 6" FIRE HYDRANT ASSEMBLY PER U.D.A.C.S. PLATE NO. 7. PROVIDE A MIN. OF 3' CLEARANCE AROUND FIRE HYDRANT.
 - 8" DOUBLE CHECK DETECTOR ASSEMBLY PER U.D.A.C.S. PLATE NO. 11-C.
 - 4" REDUCED PRESSURE PRINCIPLE ASSEMBLY (RPPA) PER U.D.A.C.S. PLATE NO. 11-C.
 - REDUCERS PER U.D.A.C.S. PLATE NO. 3.
 - GATE VALVES PER U.D.A.C.S. PLATE NO. 3 AND NO. 8.
 - BENDS AND TEES PER U.D.A.C.S. NO. 5.
 - REFER TO U.D.A.C.S. PLATE NO. 15 AND 16 FOR STORM DRAIN AND WATER AND WASTEWATER CROSSINGS.
 - REFER TO SHEET C6.1 FOR GENERAL NOTES.

[Hatched Box Symbol] = LIMITS OF FIRE LANE (REFER TO PAVING SHEETS)

FIRE FLOW CALCULATIONS

FIRE FLOW REQUIREMENT IS **3131** GALLONS PER MINUTE AT 20 PSI RESIDUAL PRESSURE. BASED ON:

SQUARE FOOTAGE: **235,900 S.F.**

LARGEST AREA BETWEEN 4-HOUR AREA SEPARATION WALLS: **N/A**

BUILDING HEIGHT: **132'**

NUMBER OF STORIES: **8 MAX**

TYPE OF CONSTRUCTION: **1A REDUCE TO 1B PER IBC 403.3.1**

OCCUPANCY: **1-2**

FULL AUTOMATIC FIRE SPRINKLER SYSTEM: YES NO

REVIEWED BY: *[Signature]* DATE: **11/15/05**

DOUBLE CHECK DETECTOR ASSEMBLY (DCDA) (2)(0)"

THE DOUBLE CHECK DETECTOR ASSEMBLIES SHALL BE INSTALLED IN ACCORDANCE WITH THE UDACS PLATE NO. 11C.

ANY BLOCK WALL OR OTHER FENCE MATERIAL SHALL BE DESIGNED AND CONSTRUCTED AROUND THE OUTSIDE OF THE EASEMENT(S) SO AS TO ALLOW THE DISTRICT DIRECT ACCESS FROM THE ADJACENT RIGHT-OF-WAY.

EASEMENTS SHALL BE CLEARLY MARKED OR STAKED PRIOR TO THE START OF CONSTRUCTION. ESN.006 REVISED 6/1/04

ADJUST WATER VALVE BOX TO FINISHED GRADE PER UDACS PLATE NO. 8. VALVE SHALL BE ACCESSIBLE AT ALL TIMES. ESN.035 REVISED 6/1/04

ABANDONED VALVE CUT AND CAP

ALL VALVES TO BE ABANDONED SHALL BE ABANDONED IN THE CLOSED POSITION, UNLESS SHOWN OTHERWISE, BY REMOVING A MINIMUM OF EIGHT (8) INCHES OF SAND OR TYPE II AGGREGATE BASE, THE REMAINING PORTION OF THE VALVE BOX SHALL BE FILLED WITH CONCRETE HAVING A COMPRESSIVE STRENGTH OF AT LEAST TWO THOUSAND (2,000) PSI. THE LATERAL MUST BE CUT WITHIN THREE (3) FEET OF THE ABANDONED VALVE, OR AS SHOWN ON PLANS, AND CAPPED. THE CONTRACTOR SHALL CUT THE EXISTING PIPE WHERE SHOWN ON THE DRAWING AND INSTALL A CAP COMPLETE WITH THRUST BLOCK. WHERE A JOINT OR COUPLING IN THE EXISTING PIPE IS UNCOVERED AT THE CUT AND CAP LOCATIONS, THE INSTALLATION OF A PLUG MAY BE PERMITTED WITH DISTRICT APPROVAL. A CONCRETE THRUST BLOCK SHALL BE INSTALLED AT ALL CAP OR PLUG LOCATIONS IN ACCORDANCE WITH THE PROVISIONS OF UDACS PLATE 5. ESN.033 REVISED 6/1/04

BASIS OF BEARING

THE BASIS OF BEARING IS A LINE BETWEEN THE N1/4 COR. OF SEC. 20, T. 19 S., R. 60 E., M.D.M., AND THE E1/16 COR. OF SAID SEC. 20, AS SHOWN ON EXHIBIT B OF DOC. 20030131-03151, WHICH IS THE DEDICATION OF ELKHORN ROAD, WHICH BEARS S 89°42'15" E.

CLV BENCHMARK #BLV90-20N6 RIVET & PLATE IN CONCRETE CYLINDER NE CORNER OF EL CAPITAN & DORRELL ELEVATION: 788.9015 METERS, 2588.25 FEET

- SANITARY SEWER NOTES:**
- 48" DIA. STANDARD ECCENTRIC MANHOLE PER D.C.S.W.C.S. DWG No. SD-1.
 - CLEANOUT PER PLAN WITH MCKENNA H-20 TRAFFIC LOAD RATED COVERS OR APPROVED EQUAL (SEE DETAIL ON SHEET C6.B)
 - POC; SEE PLUMBING PLANS FOR CONTINUATION OF SANITARY SEWER STUB SIZES. PROVIDE REDUCER WHERE NECESSARY.
 - 48" DIA. TYPE C SAMPLING MANHOLE PER D.C.S.W.C.S. DWG No. SD-28.
 - DEEP LATERAL CONNECTION PER D.C.S.W.C.S. DWG No. SD-18.
 - PIPE BEDDING PER D.C.S.W.C.S. DWG No. SD-11 AND TRENCH SECTION PER D.C.S.W.C.S. DWG No. SD-16 AND 16A.
 - REFER TO SHEET C6.1 FOR GENERAL NOTES.

ABANDONED VALVES

ALL VALVES TO BE ABANDONED SHALL BE ABANDONED IN THE CLOSED POSITION, UNLESS SHOWN OTHERWISE, BY REMOVING A MINIMUM OF THE TOP TWENTY-FOUR (24) INCHES OF THE VALVE BOX AND THEN FILLING THE BOTTOM OF THE BOX WITH A MINIMUM OF EIGHT (8) INCHES OF SAND OR TYPE II AGGREGATE BASE, THE REMAINING PORTION OF THE VALVE BOX SHALL BE FILLED WITH CONCRETE HAVING A COMPRESSIVE STRENGTH OF AT LEAST TWO THOUSAND (2,000) PSI. ESN.032 REVISED 6/1/04

CAUTION TO CONTRACTOR

THE CONTRACTOR SHALL BE RESPONSIBLE TO INVESTIGATE AND VERIFY THE ACTUAL LOCATION AND DEPTH OF ALL EXISTING UNDERGROUND FACILITIES AT LEAST 48 HOURS IN ADVANCE OF THE PERFORMANCE OF ANY WORK.

Avoid cutting underground utility lines. It's costly.

Avoid overhead power line contact. It's costly.

Call before you Dig **1-800-227-2600**

Call before you Overhead **1-702-593-6111**

Call before you UnderGround **1-702-455-7611**

CLARK COUNTY TRAFFIC OPERATIONS AND **1-702-229-6611**

L.V.V.W.D. APPROVAL

[Signature] DATE: **11/23/05**

LAS VEGAS VALLEY WATER DISTRICT, DIST. 110891

REV.	DESCRIPTION:	DATE:	BY:

Centennial Hills Hospital Medical Center

Centennial Hills Hospital

Las Vegas, NV

DATE: 10/31/05

REGISTERED PROFESSIONAL ENGINEER - STATE OF NEVADA

RICHARD CARSON, JR.

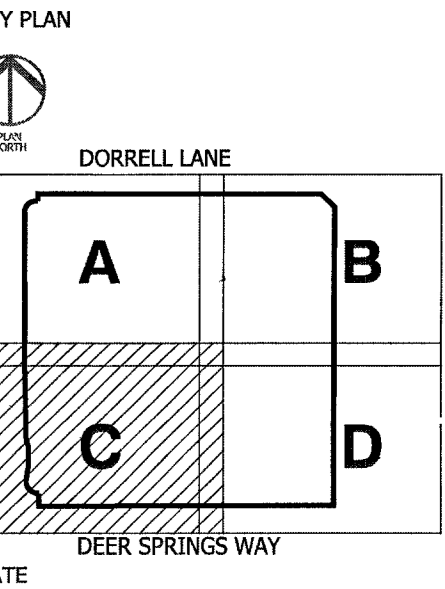
EXP. 12-31-06

CIVIL

Professional Seal No. 14570

DATE: **10/31/05**

HKS JOB NO. **8849**



DATE: **20 Jun 05**

BID/PERMIT ISSUE: 20 JUN 05

CITY OF LAS VEGAS - CIVIL REVIEW

15 SEPS: 05

FINAL SUBMITTAL: 31 OCT. 05

SHEET TITLE: **WATER & WASTEWATER PLAN**

SHEET NO. **C6.C**

SHEET NO. **33 OF 43**