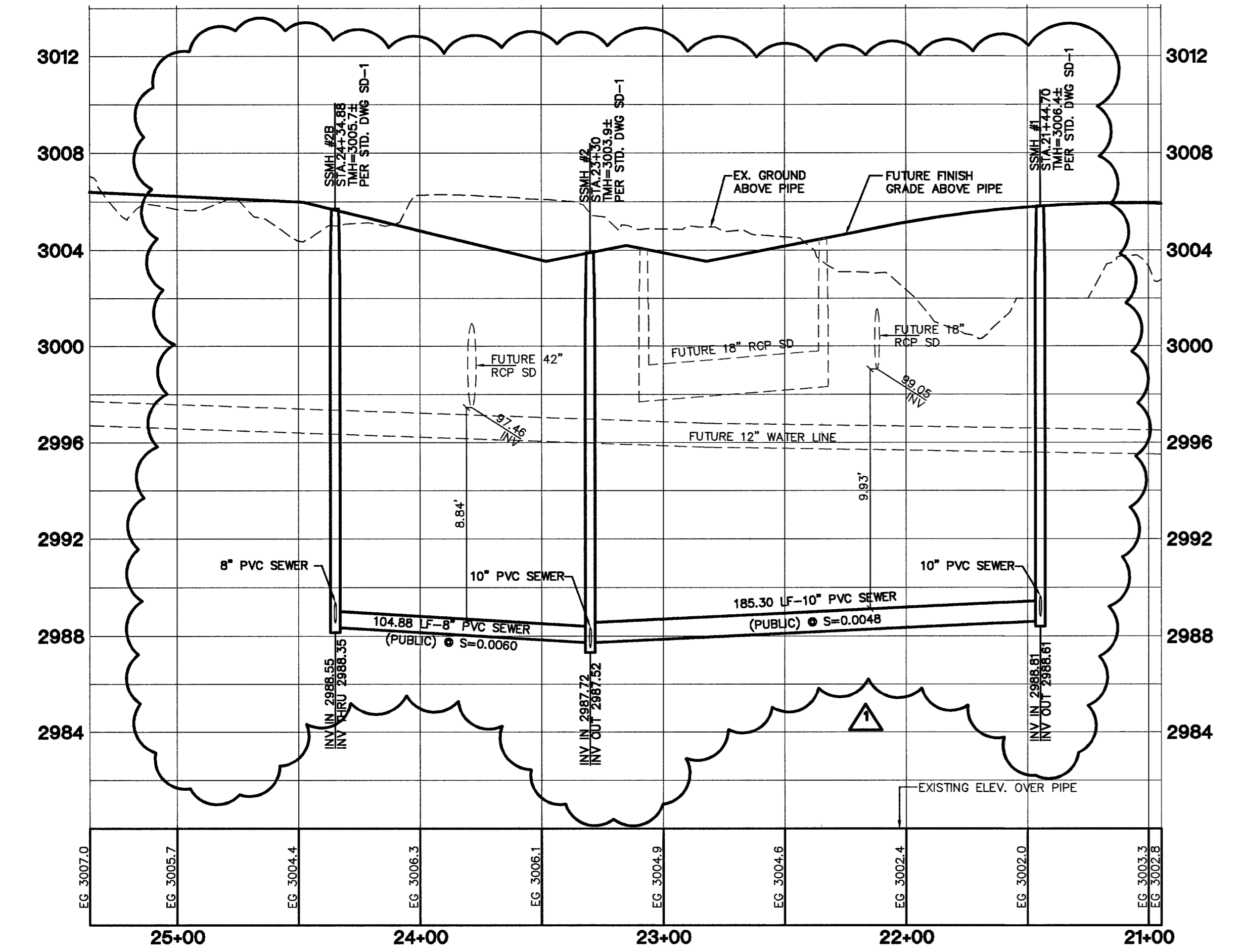


SHAUMBER ROAD (PUBLIC STREET)



BASIS OF BEARINGS
 THE BASIS OF BEARINGS FOR THIS PROJECT IS NORTH 00°08'16" EAST BEING THE EAST LINE OF THE NORTHWEST QUARTER (NE 1/4) OF THE SECTION 24, TOWNSHIP 19 SOUTH, RANGE 59 EAST, M.D.M., CLARK COUNTY, NEVADA, AS SHOWN ON A RECORD OF SURVEY ON FILE IN THE CLARK COUNTY, NEVADA, RECORDER'S OFFICE IN FILE 123 AT PAGE 32.

PROJECT BENCHMARK
 PROJECT DATUM: NORTH AMERICAN VERTICAL DATUM OF 1988 (NAVD88)
 CLARK COUNTY VERTICAL CONTROL: 1C00-6N6
 NAVD88 ELEVATION: 787.794 METERS (2584.03 FEET)

RVET & SQUARE ALUMINUM PLATE IN 6" CONCRETE CYLINDER, LOCATED 25' SOUTH AND 50' EAST OF GRAND CANYON DRIVE AND RED COACH AVENUE, 1' WEST OF ELECTRICAL VAULT.

CITY OF LAS VEGAS BENCHMARK
 DATUM: NORTH AMERICAN VERTICAL DATUM OF 1988 (NAVD88)
 CITY OF LAS VEGAS BENCHMARK: BLV99-13SES
 NAVD88 ELEVATION: 869.606 METERS (2853.03 FEET)

RVET AND PLATE IN CONCRETE CYLINDER NW CORNER OF HUALAPAI AND ELKHORN

NOTE: ADD 0.34' TO ABOVE CITY OF LAS VEGAS BENCHMARK BLV99-13SES TO MATCH ORIGINAL PROJECT BENCHMARK, CLARK COUNTY BENCHMARK 1C00-6N6 (2584.62 FEET) AS SHOWN ON RECORD OF SURVEY FILE 124 PAGE 94.

Call before you Underground

1-702-455-7511

CLARK COUNTY TRAFFIC OPERATIONS AND

1-702-229-6611

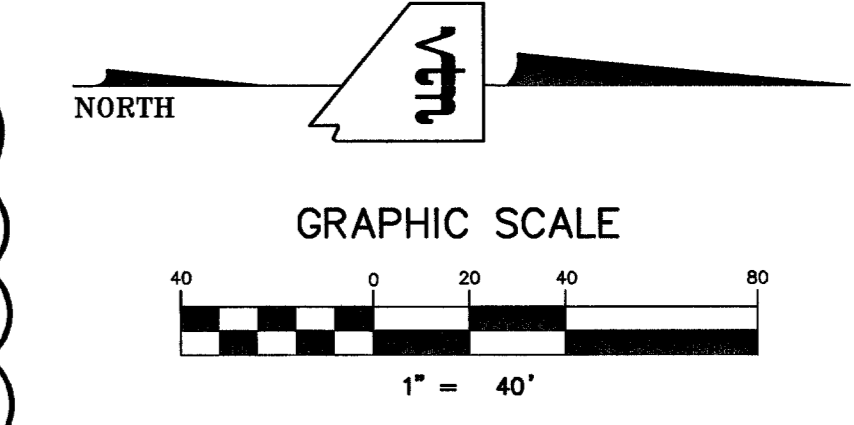
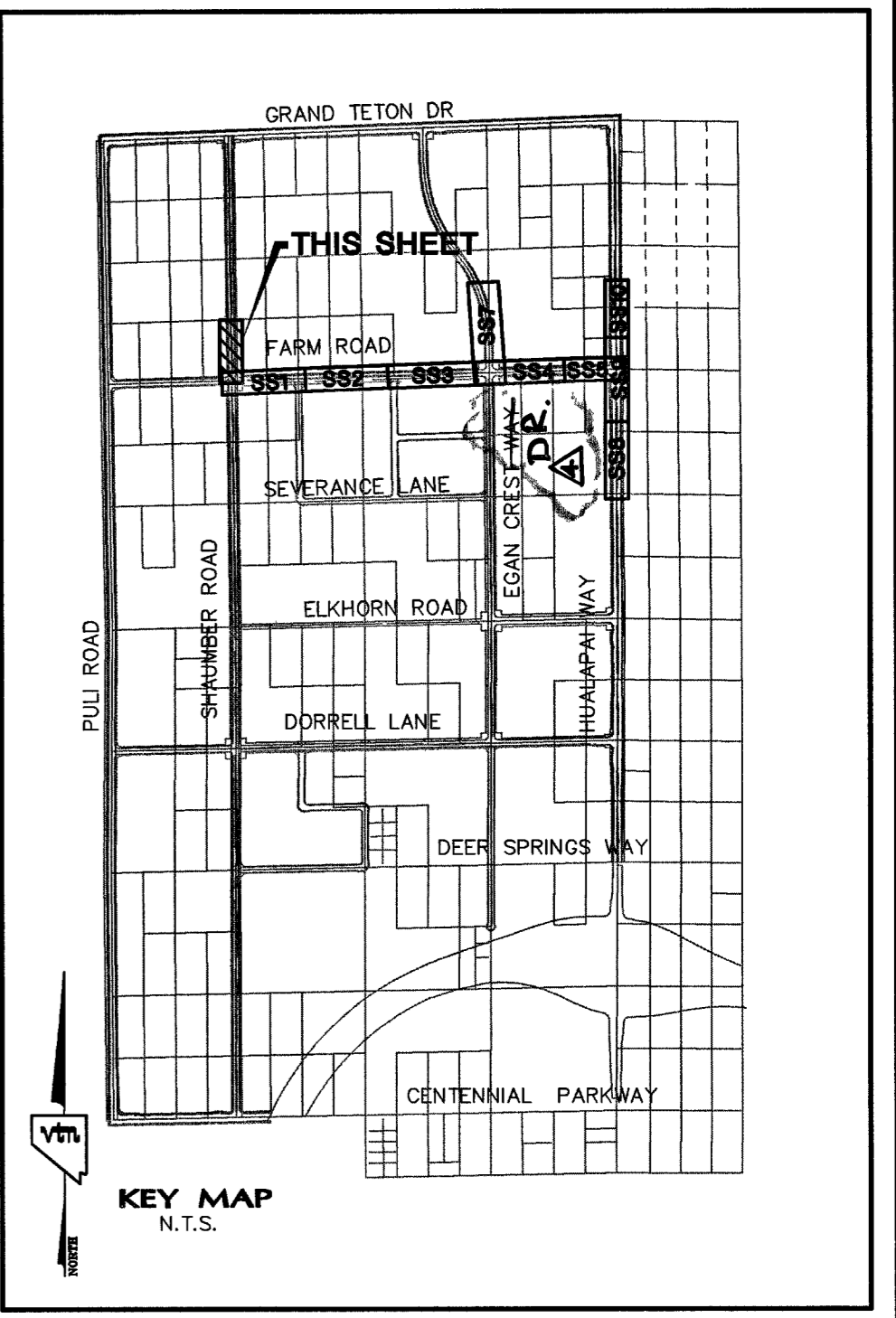
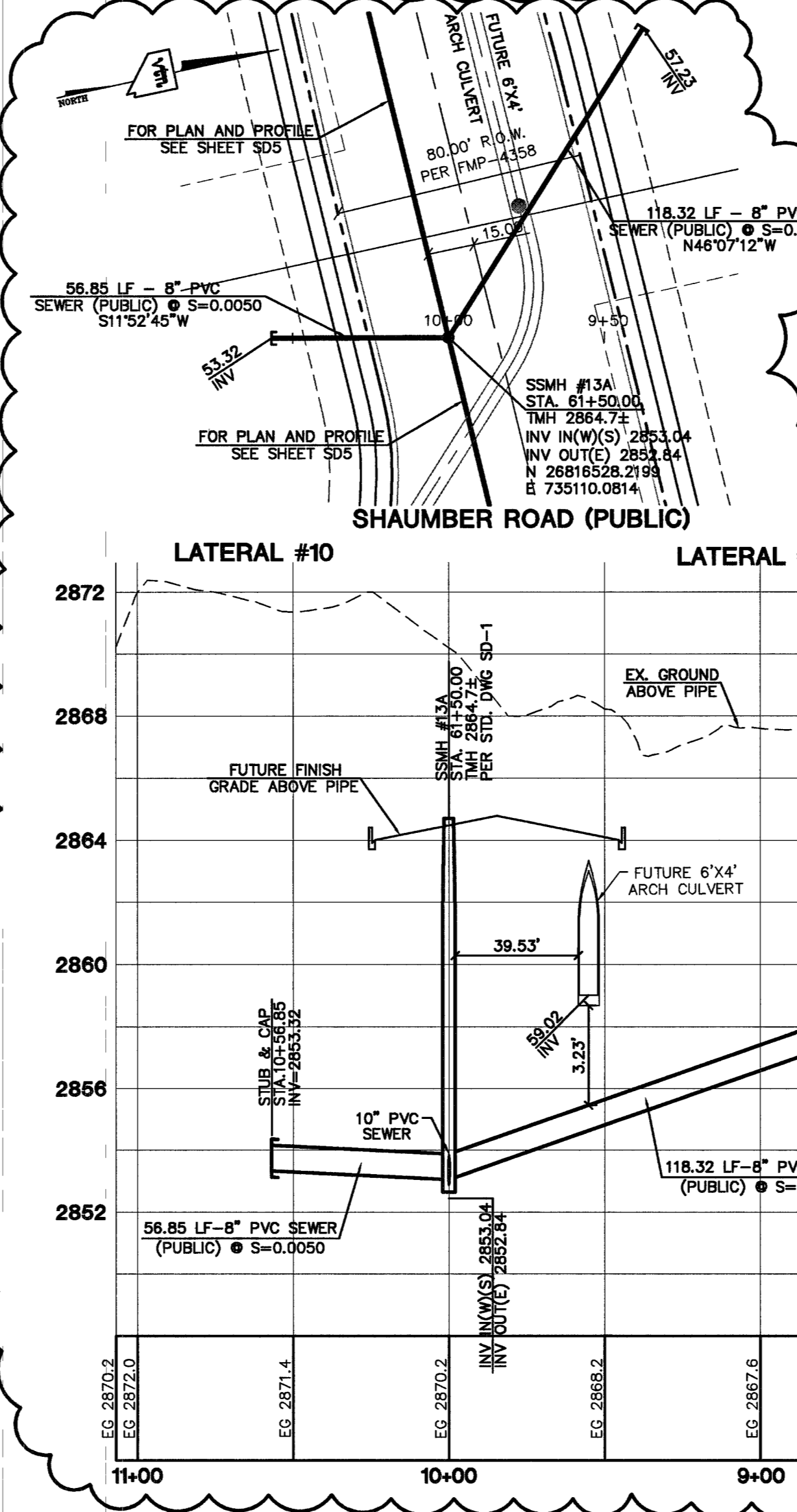
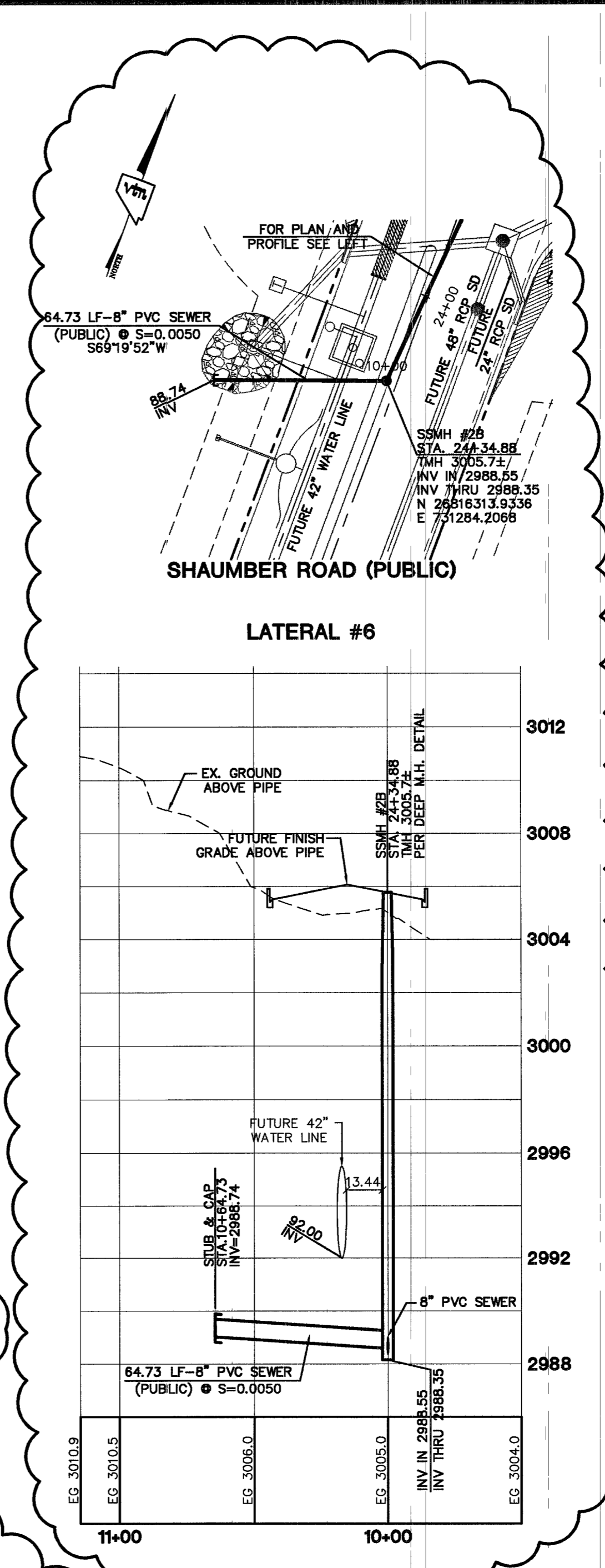
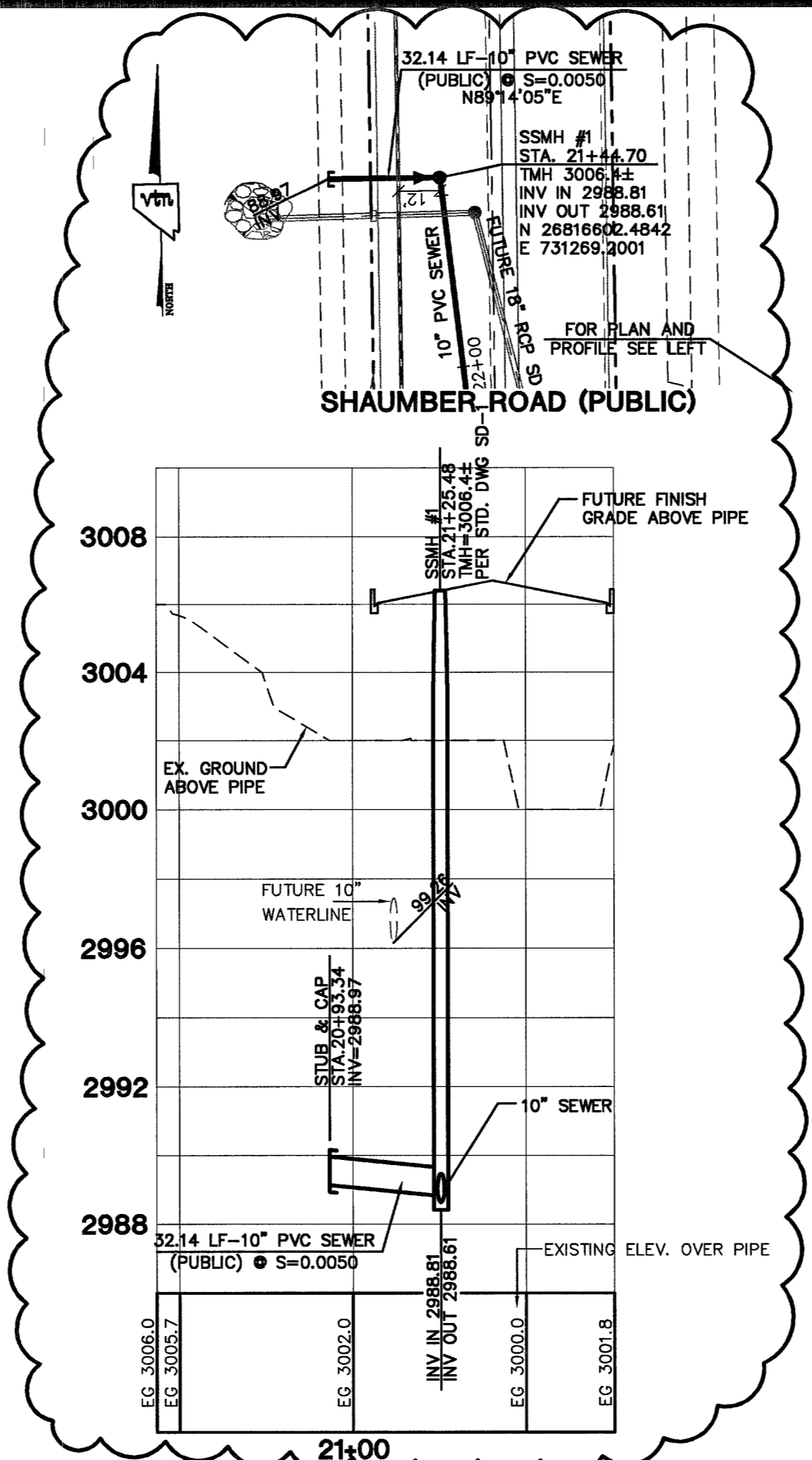
LAS VEGAS AREA COMPUTERIZED TRAFFIC SYSTEM

Call before you Dig

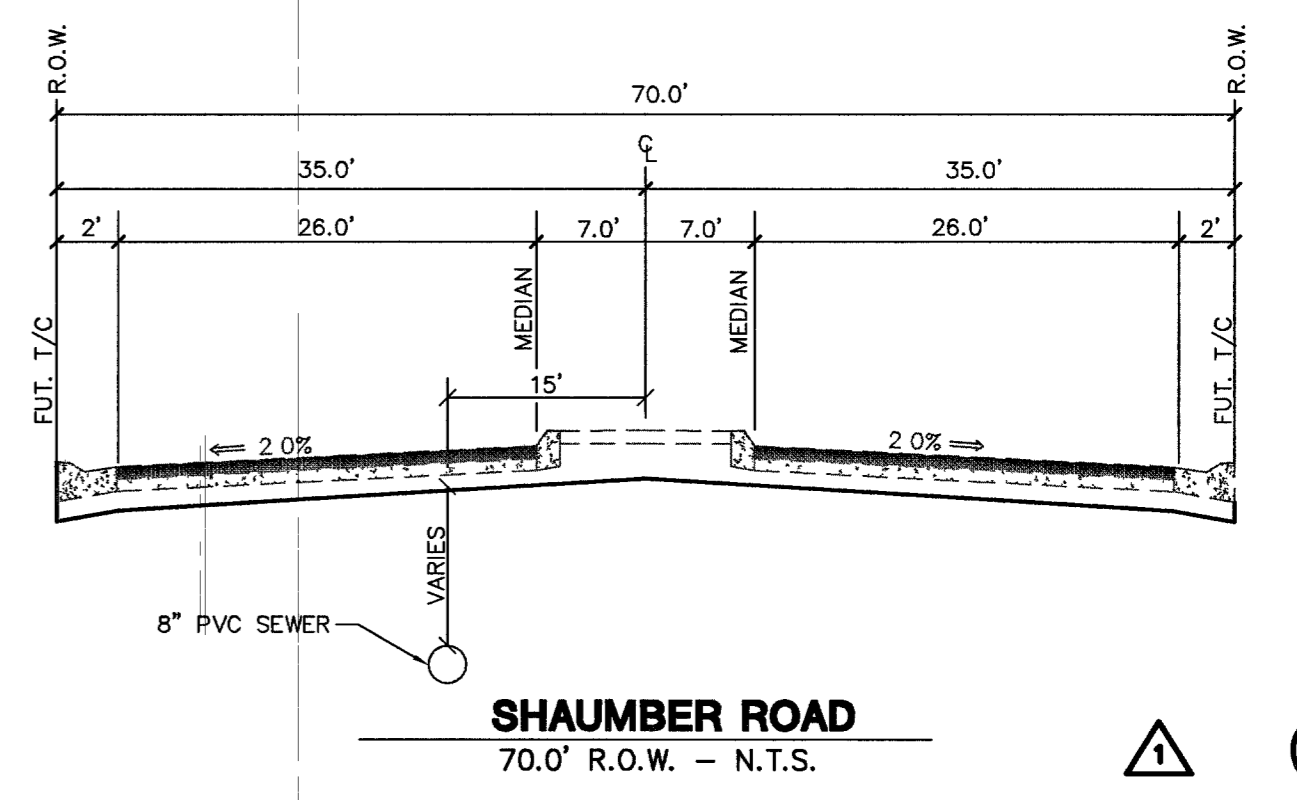
1-800-227-2600

Call before you Overhead

1-702-593-6111



CONTRACTOR NOTE
 CONTRACTOR SHALL VERIFY HORIZONTAL AND VERTICAL LOCATION OF EXISTING UTILITIES AND NOTIFY THE DESIGN ENGINEER IMMEDIATELY OF ANY DISCREPANCIES PRIOR TO CONSTRUCTION.



CLIFFS EDGE LLC		CITY OF LAS VEGAS, NEVADA	
3455 CLIFF SHADOWS PARKWAY, SUITE 290 LAS VEGAS, NEVADA 89129 (702) 777-1221		2727 SOUTH RAINBOW BOULEVARD LAS VEGAS, NEVADA 89146-5148 PH. (702) 873-7550 FAX (702) 382-2597	
SEWER PLAN AND PROFILE		CLIFFS EDGE / PROVIDENCE	
SHAUMBER ROAD LATERAL		FARM ROAD	
SEWER IMPROVEMENTS		SEWER IMPROVEMENTS	
DRAWN BY: MG	MARCH '04	DESIGNED BY: SF	MARCH '04
CHECKED BY: LIM	MARCH '04	PROJECT NO: 5899	SCALE: 1"=40' HORIZ. 1"=4' VERT.
EXPIRES 06-30-08		SHEET SS6 9 OF 13 SHEETS	
1074-4816-0S-7		DRAWING NO.	