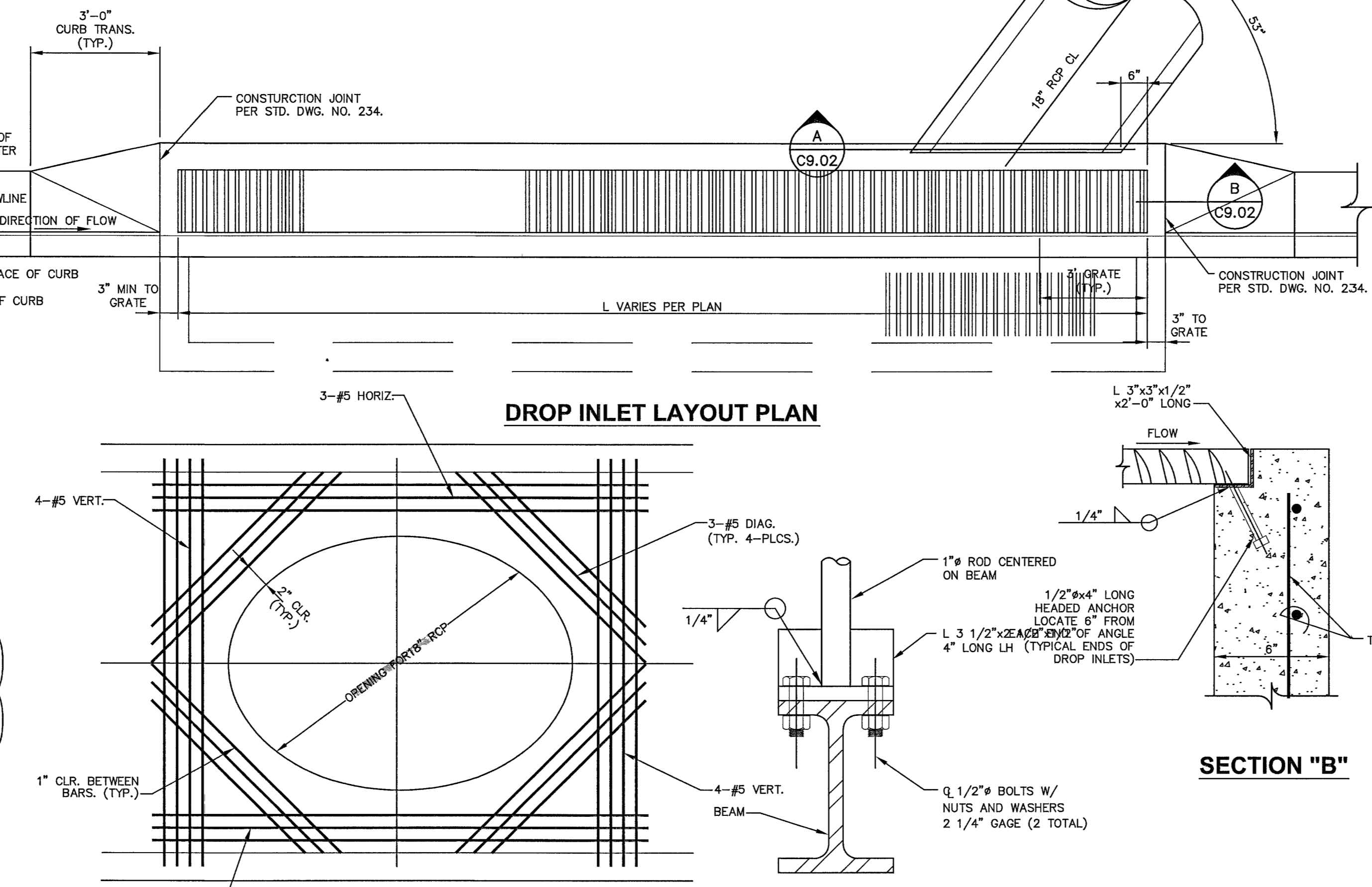


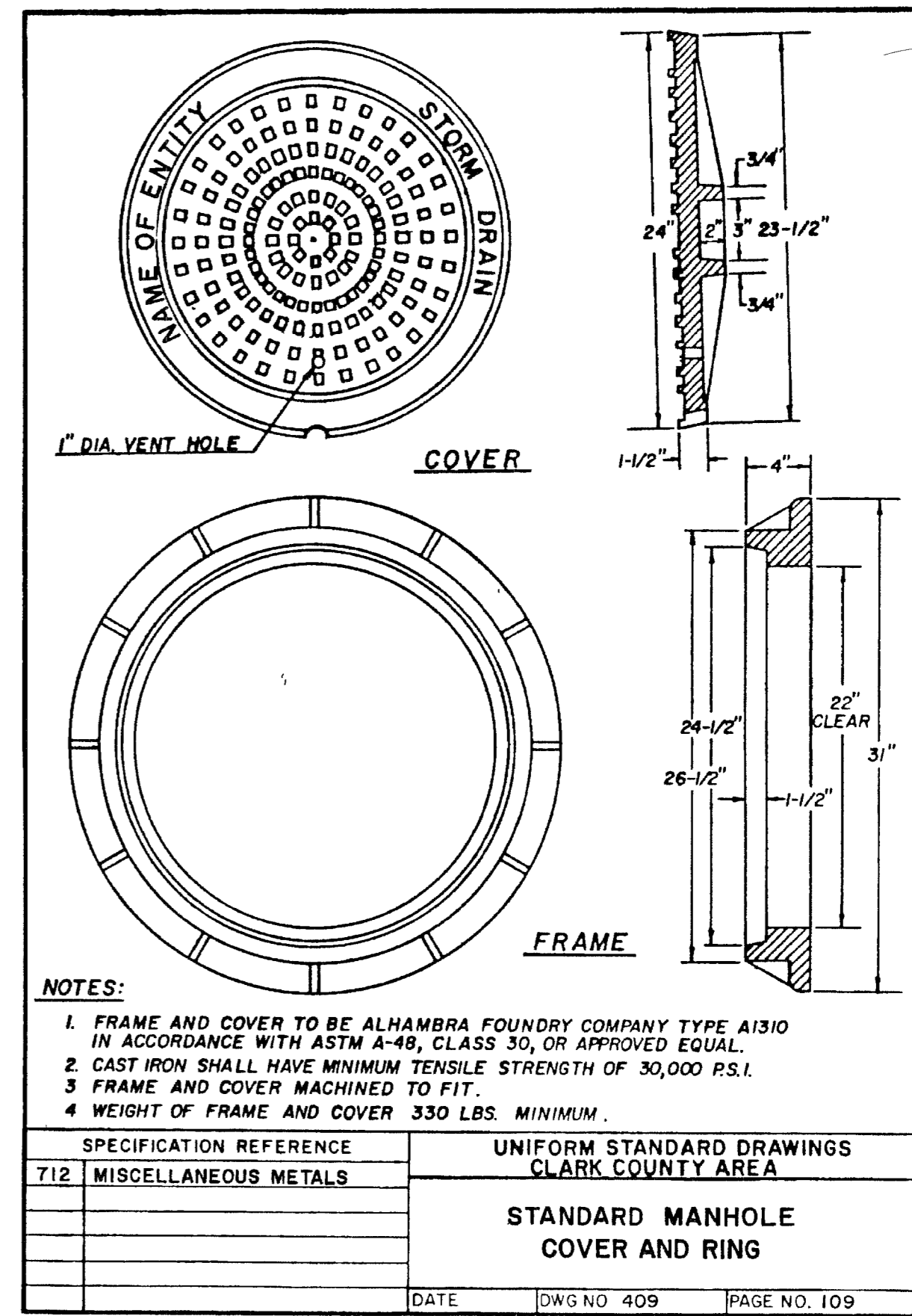
**TYPE "CM" DROP INLET SECTION**



**DROP INLET LAYOUT PLAN**

**SECTION "A"**

**SECTION "B"**

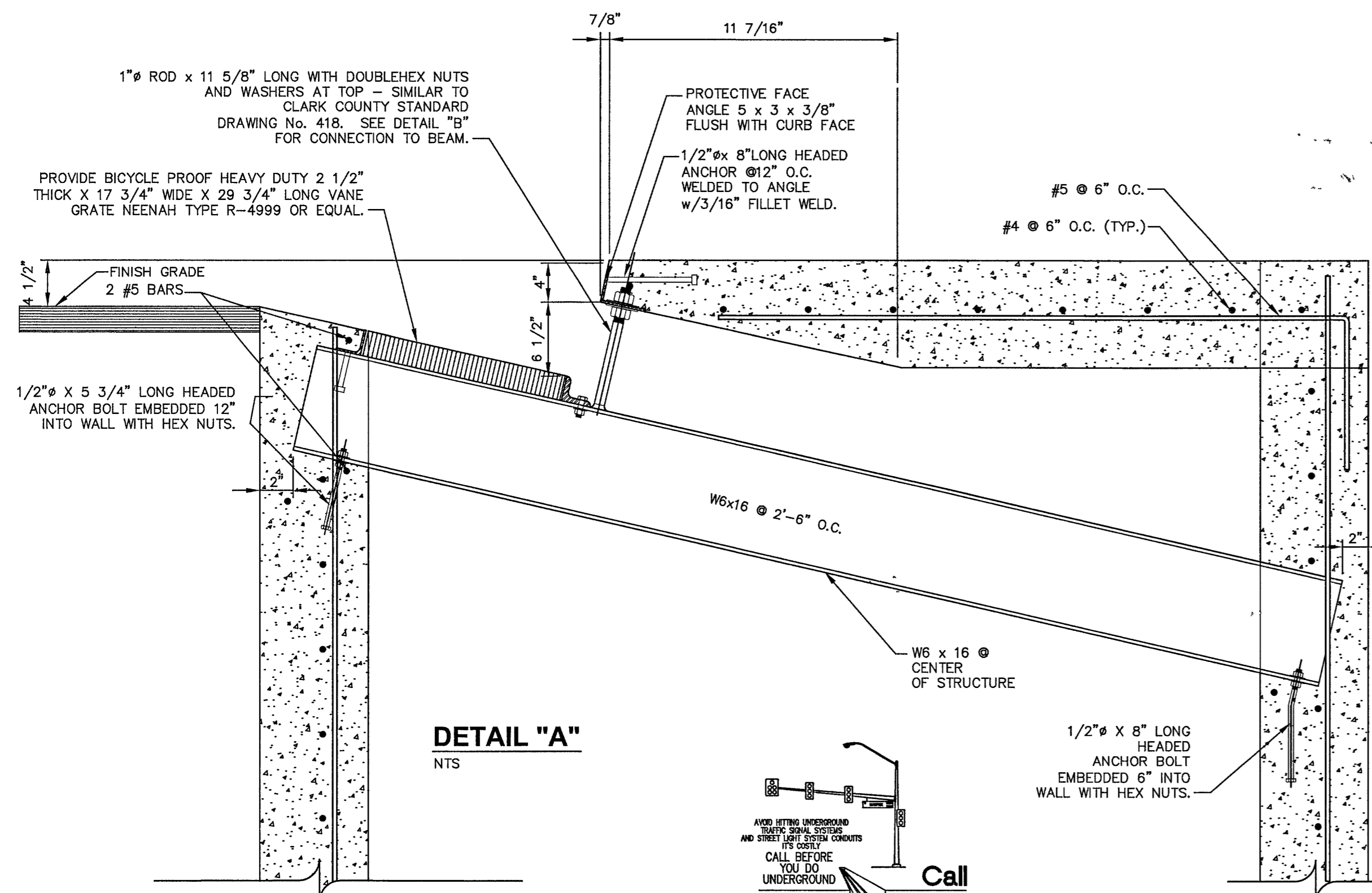


**NOTES:**

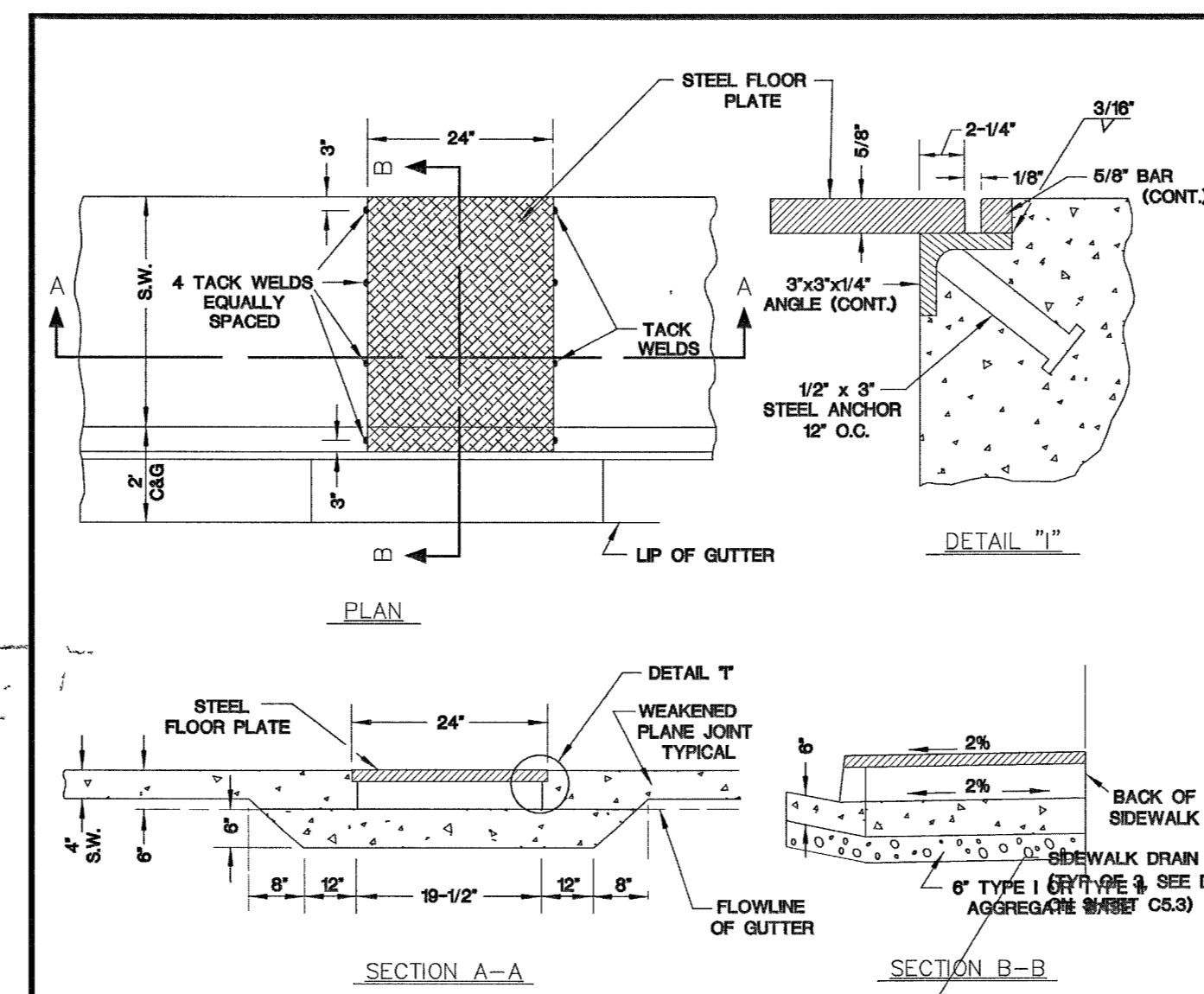
1. FRAME AND COVER TO BE ALHAMBRA FOUNDRY COMPANY TYPE A130 IN ACCORDANCE WITH ASTM A-48, CLASS 30, OR APPROVED EQUAL.
2. CAST IRON SHALL HAVE MINIMUM TENSILE STRENGTH OF 30,000 P.S.I.
3. FRAME AND COVER MACHINED TO FIT.
4. WEIGHT OF FRAME AND COVER 330 LBS. MINIMUM.

SPECIFICATION REFERENCE	UNIFORM STANDARD DRAWINGS
712 MISCELLANEOUS METALS	CLARK COUNTY AREA
	<b>STANDARD MANHOLE COVER AND RING</b>
DATE	DWG. NO. 409 PAGE NO. 109

- NOTES:**
1. ALL EXPOSED METALS SHALL BE HOT DIP GALVANIZED AFTER FABRICATION.
  2. PROVIDE 1/2" (MIN.) CLEARANCE ALL AROUND THE STEEL BEAM, DRY PACK AFTER INSTALLATION.
  3. WHEN REQUIRED BY LENGTH OF OPENING, PLATE ANGLE MAYBE DELIVERED IN SECTIONS AND BUTT WELDED IN PLACE.
  4. ALL GALVANIZING DAMAGED BY WELDING SHALL RECEIVE TWO COATS OF GALVALLOY OR EQUAL.
  5. CONCRETE SHALL BE MODIFIED CLASS DA, SEE SPECIAL PROVISIONS SECTION 501.
  6. WHERE PIPE PENETRATIONS INTERRUPT REINFORCING, FIELD CUT REINFORCING 2" CLR OF PIPE PENETRATIONS.
  7. ANGLE ANCHORS SHALL BE EMBEDDED MIDPOINT IN EACH ENDWALL AND EVENLY SPACED. (MAXIMUM SPACING OF 2')

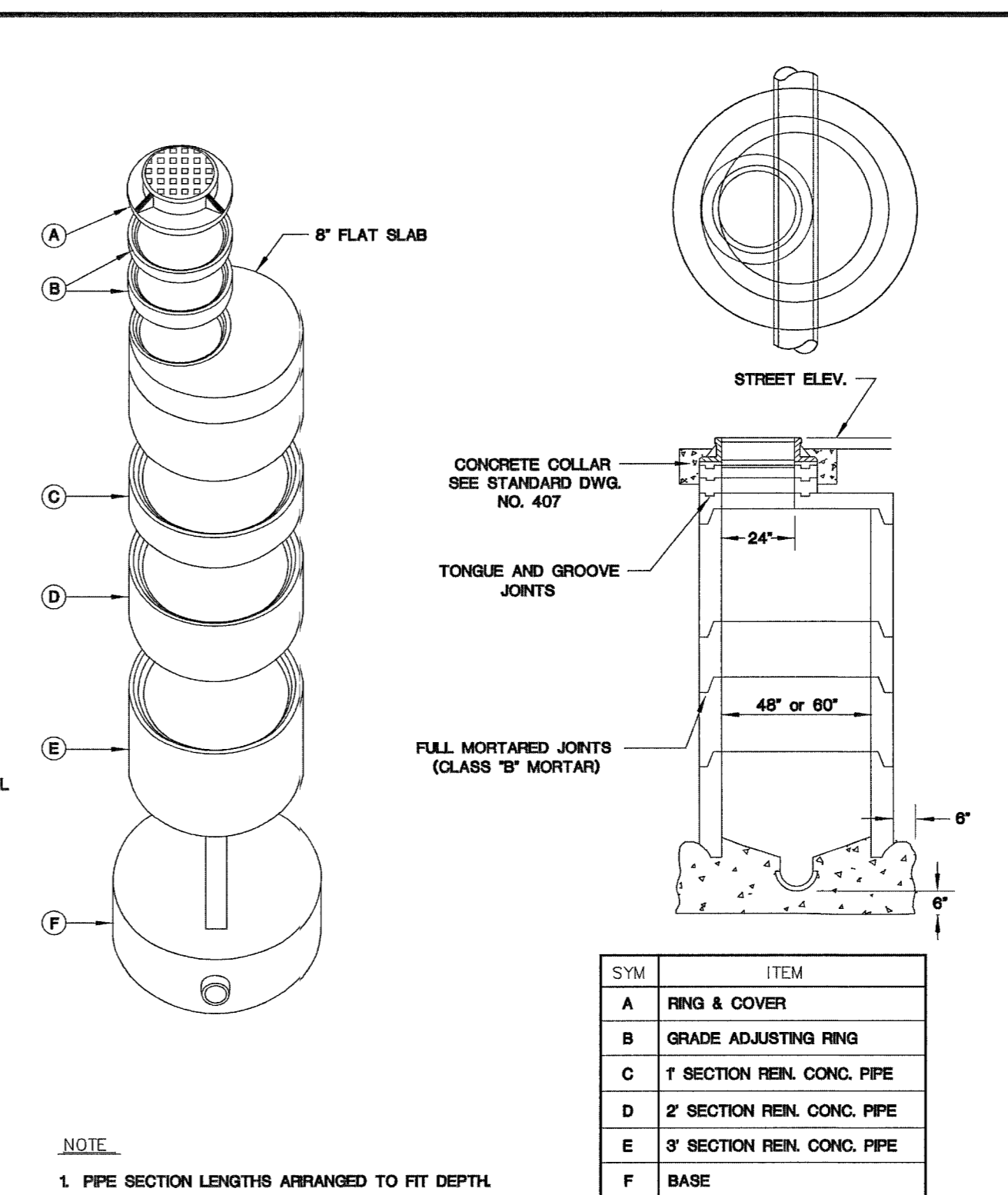


**STORM DRAIN DROP INLET DETAILS**



- NOTES:**
1. IF WIDTH OF PLATE IS GREATER THAN 24", A SPECIAL DESIGN IS REQUIRED.
  2. ALL EXPOSED METAL PARTS SHALL BE GALVANIZED AND ALL GALVANIZING DAMAGED BY FABRICATION OR INSTALLATION SHALL RECEIVE TWO COATS OF ALUMINUM PAINT (GALVONOX OR EQUAL).

SPECIFICATION REFERENCE	UNIFORM STANDARD DRAWINGS
302 BASE AGGREGATES	CLARK COUNTY AREA
501 CONCRETE	<b>SIDEWALK DRAIN</b>
710 STRUCTURAL STEEL	
DATE	DWG. NO. 238 PAGE NO. 42



- NOTE:**
1. PIPE SECTION LENGTHS ARRANGED TO FIT DEPTH.

SYM	ITEM
A	RING & COVER
B	GRADE ADJUSTING RING
C	1' SECTION REIN. CONC. PIPE
D	2' SECTION REIN. CONC. PIPE
E	3' SECTION REIN. CONC. PIPE
F	BASE

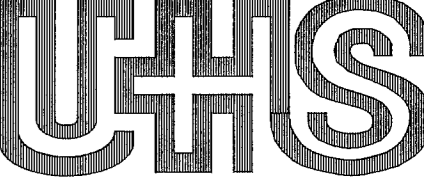
SPECIFICATION REFERENCE	UNIFORM STANDARD DRAWINGS
501 CONCRETE & MORTAR	CLARK COUNTY AREA
609 CATCH BASINS, MANHOLES & INLETS	<b>TYPE IA MANHOLE</b>
DATE	DWG. NO. 404 PAGE NO. 104

**NOTE:**  
THE STANDARD DETAILS SHOWN ON THIS SHEET ARE FOR INFORMATION ONLY. THE CONTRACTOR SHALL BE RESPONSIBLE TO OBTAIN THE MOST RECENT REVISIONS TO ANY STANDARD DETAIL.

**BASIS OF BEARING**

THE BASIS OF BEARING IS A LINE BETWEEN THE N1/4 COR. OF SEC. 20, T. 19 S., R. 60 E., M.D.M., AND THE E1/16 COR. OF SAID SEC. 20, AS SHOWN ON EXHIBIT B OF DOC. 20030131:03151, WHICH IS THE DEDICATION OF ELKHORN ROAD, WHICH BEARS S 89°42'15" E.  
CLV BENCHMARK #BLV90-20N6  
RIVET & PLATE IN CONCRETE CYLINDER NE CORNER OF EL CAPITAN & DORRELL  
ELEVATION: 788.9015 METERS, 2588.25 FEET

REV:	DESCRIPTION:	DATE:	BY:



CLIENT  
UHS OF DELAWARE, INC.  
367 SOUTH GULPH ROAD  
KING OF PRUSSIA, PA 19406  
610-768-3300

ARCHITECT  
HKS INC. OF NEVADA  
1919 MCKINNEY AVE.  
DALLAS, TX 75201  
214.969.5599

STRUCTURAL ENGINEER  
HKS STRUCTURES  
1919 MCKINNEY AVE.  
DALLAS, TX 75201

MEP ENGINEER  
CORD PARTNERS  
3625 N. HALL ST., SUITE 1300 LB 139  
DALLAS, TX 75219

INTERIORS CONSULTANT  
DESIGN STUDIO, INC.  
161 LEVERINGTON AVE.  
PHILADELPHIA, PA 19127

CIVIL ENGINEER  
LOPEZGARCIA GROUP  
1825 MARKET CENTER, SUITE 500  
DALLAS, TX 75207

FOOD SERVICE CONSULTANT  
SDI, INC.  
5200 DTC PARKWAY, SUITE 500  
GREENWOOD VILLAGE, CO 80111

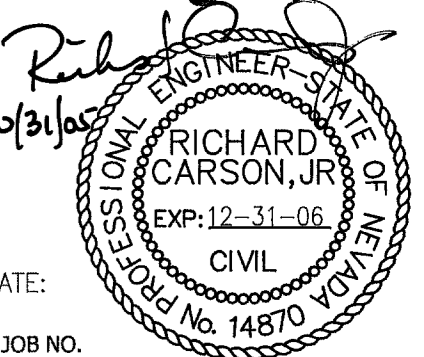
LANDSCAPE ARCHITECT  
JW ZUNINO AND ASSOCIATES  
3191 S. JONES BLVD.  
LAS VEGAS, TN 89146



Centennial Hills Hospital  
Medical Center

**Centennial Hills Hospital**  
Las Vegas, NV

Richard Carson, Jr.  
ENGINEER-IN-CHARGE



DATE:

HKS JOB NO.

**8849**

KEY PLAN



DORRELL LANE

DURANCO DRIVE

DEER SPRINGS WAY

DATE

**20 Jun 05**

BID/PERMIT ISSUE

20 JUN 05

15 SEPT 05

FINAL SUBMITTAL

31 OCT 05

SHEET TITLE

**STANDARD DRAINAGE DETAILS**

SHEET NO.

**C5.6**

SHEET NO.

28 OF 43

107 V 4516

86338

Call before you UnderGround  
1-702-455-7511  
CLARK COUNTY TRAFFIC OPERATIONS  
AND  
1-702-229-6611  
LAS VEGAS AREA COMPUTERIZED TRAFFIC SYSTEM

Call before you OVERHEAD  
1-702-593-6111

Call before you Dig  
1-800-227-2600