

Clark County
Department of Development Services
4701 W. Russell Rd
Las Vegas, Nevada 89118
(702) 455-0000

RETAINING WALL WITH OPTION 6' MASONRY WALL

PAGE 1 OF 1
B-101
04-13-04

GENERAL NOTES:

- ALL WORK SHALL CONFORM TO THE INTERNATIONAL BUILDING CODE 2000 EDITION WITH SMC AMENDMENT AS ADOPTED BY CLARK COUNTY.
- CONCRETE BLOCK MASONRY SHALL COMPLY WITH THE FOLLOWING:
 - CONCRETE MASONRY SHALL CONFORM TO ASTM C 90 OR C 900, GRADE-III
 - MORTAR TYPE M OR TYPE S, 1800 PSI
 - GROUT CONFORMS TO ASTM C 476, MINIMUM 2000 PSI.
- THE ULTIMATE COMPRESSIVE STRENGTH REQUIRED FOR FOUNDATION CONCRETE SHALL BE OF 4000 PSI. (EXPOSED TO SULFATE CONTAINING SOILS)
- ALL REINFORCING STEEL SHALL BE INTERMEDIATE GRADE ASTM A615-40
- PROVIDE 10% FILL OF CLEAN COARSE GRAVEL WITH 2" DIAMETER SLEEVES THROUGH THE WALL AND LINED WITH PFC-PIPE AT 8" O/C ALONG WALL AND PLACED 3" ABOVE THE LOWEST ADJACENT FINISHED GRADE OR 4" O/A. PERFORATED PVC PIPE W/ 1% GRADIENT TO DRAIN.
- SITE PLAN SHALL BE SUBMITTED FOR REVIEW BEFORE THE BUILDING PERMIT CAN BE ISSUED.
- HORIZONTAL JOINT REINFORCEMENT 2 OF LONGITUDINAL W1.7 (W#1) WIRES SPACE NOT MORE THAN 16" MAY BE SUBSTITUTE FOR HORIZONTAL REINFORCEMENT.

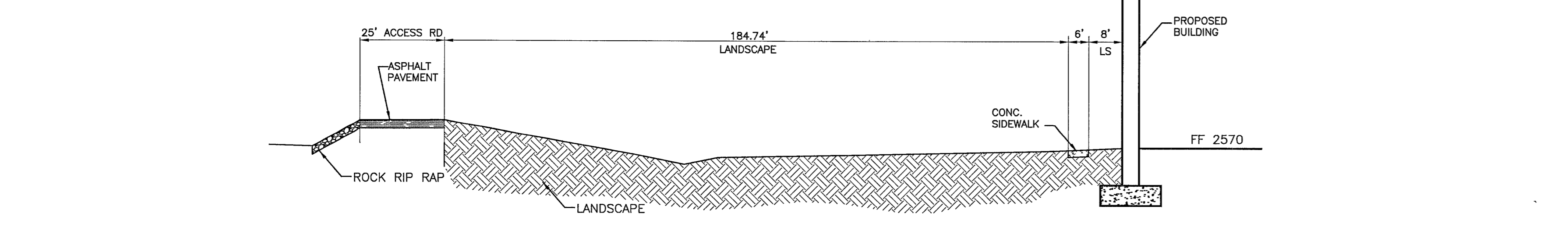
DESIGN CRITERIA
WIND LOAD:
BASIC WIND SPEED = 90 MPH, EXPOSURE C
TOPOGRAPHIC FACTOR = 1.0
W = 13.5 PSF
SEISMIC LOAD:
DESIGN SPECTRAL RESPONSE SDS = .65g
SEISMIC COEFFICIENTS K = 3.0
FF = 0.272
LATERAL PRESSURE DUE TO EARTHQUAKE MOVEMENT = 20H
20/77 THE RESULTANT IS ACTING AT 2/3H
WHERE H IS THE HEIGHT OF THE BACKFILL
30% DIAMETER
SITE CLASS = D
LATERAL EQUIVALENT FLUID PRESSURE OF .45 PSF/FT
ALLOWABLE FOUNDATION VALUES BASED ON A SOIL CLASS 5
MATERIAL OF IBC TABLE 1804.2

REINFORCEMENT DETAILS:

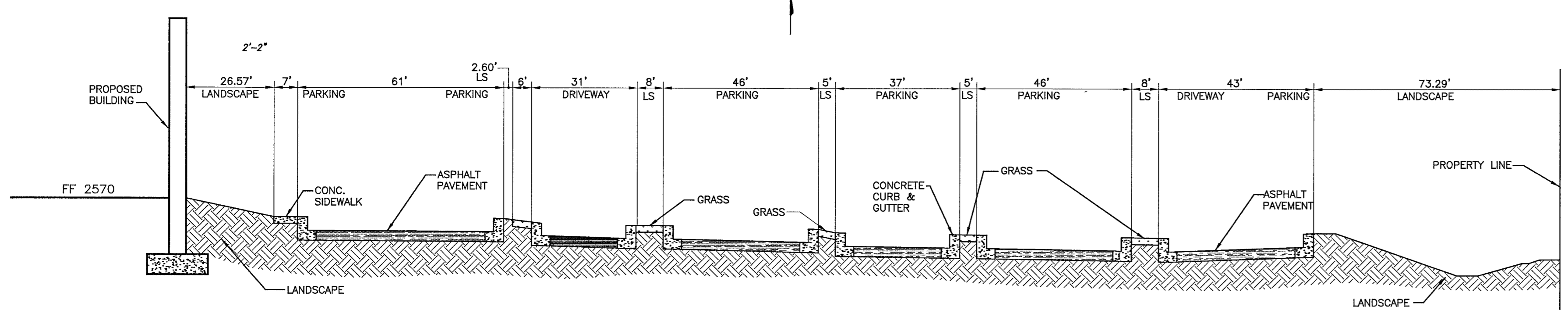
A. 4' RETAINING WALL
 - #4 HORIZ. TOTAL OF 2 FOR 6" CMU WALL (TOP AND MIDDLE)
 - 6" CMU WALL W/ #4@32" VERTICAL REINFORCEMENT PLACED AT CENTER OF THE WALL, SHOWN ONLY CELL WITH REBAR.
 - PAINT EXPOSED BLOCK
 - BACKFILL LEVEL
 - 3" COVER FOR ALL REBAR IN FOOTING TYPICAL
 - WATERPROOF BACKFILL SIDE OF RETAINING WALL
 - #4 DOWEL@8" O/C AT EDGE.
 - #4 DOWEL@8" O/C AT EDGE.
 - (3)-#4 CONT.
 - 1'-7" TYP.
 - 8" TYP.
 - 3'-0"

B. 2' RETAINING WALL
 - #4 HORIZ. TOTAL OF 3 FOR 6" CMU WALL (TOP AND MIDDLE)
 - 6" CMU WALL W/ #4@32" VERTICAL REINFORCEMENT PLACED AT CENTER OF THE WALL, SHOWN ONLY CELL WITH REBAR.
 - PAINT EXPOSED BLOCK
 - BACKFILL LEVEL
 - 3" COVER FOR ALL REBAR IN FOOTING TYPICAL
 - WATERPROOF BACKFILL SIDE OF RETAINING WALL
 - #4 DOWEL@8" O/C AT EDGE.
 - #4 DOWEL@8" O/C AT EDGE.
 - (1)-#4 CONT.
 - 1'-7" TYP.
 - 8" TYP.
 - 2'-0"

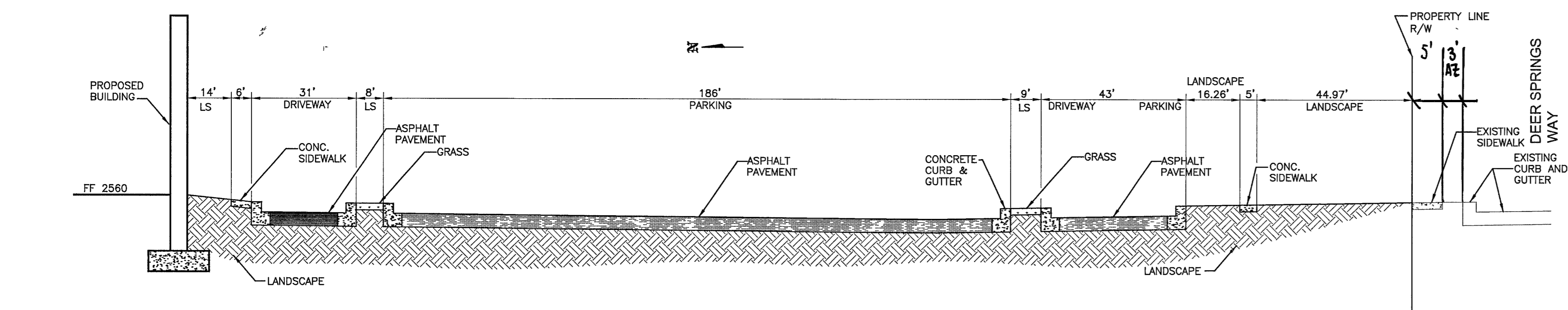
FOUNDATION REQUIREMENTS:
 1ST. FOUNDATION TRENCH WITH SECURED REINFORCING STEEL.
 2ND. BLOCK WALL WITH REINFORCING STEEL BEFORE GROUT.
 3RD. GROUTED WALL AND DRAINAGE SYSTEM.
 4TH. BACKFILL AND FINISH.



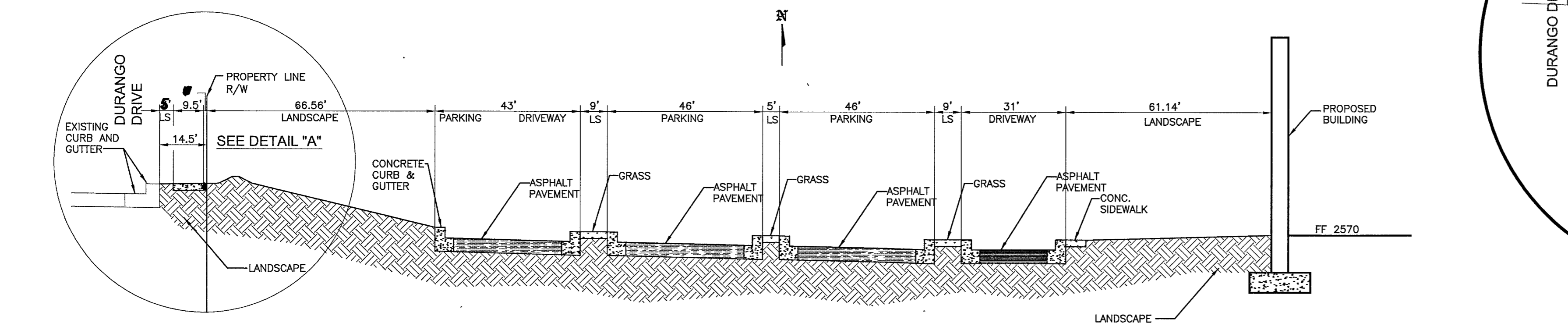
SECTION 1 - NORTH PROPERTY LINE SECTION
NTS



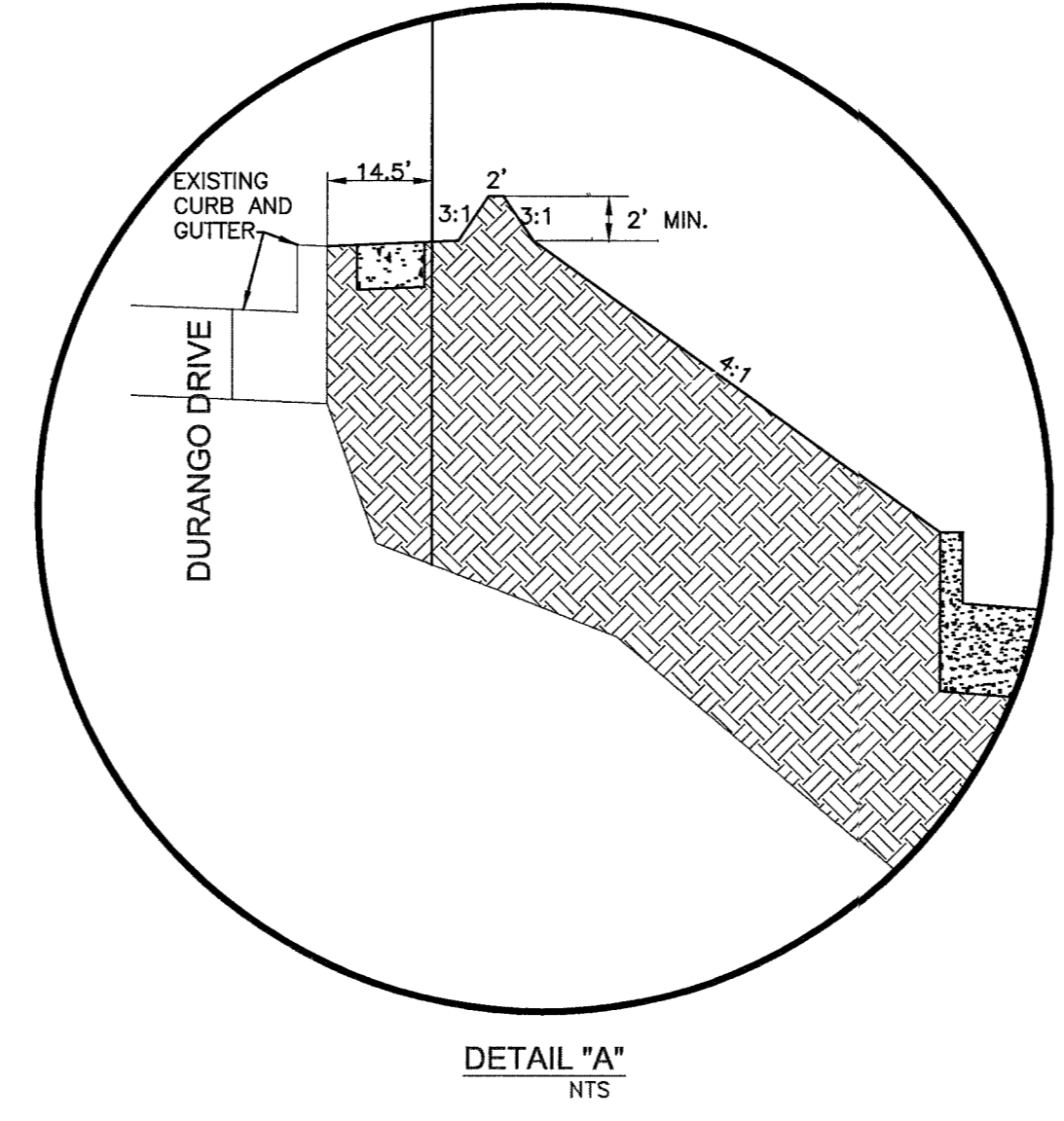
SECTION 2 - EAST PROPERTY LINE SECTION
NTS



SECTION 3 - SOUTH PROPERTY LINE SECTION
NTS



SECTION 4 - WEST PROPERTY LINE SECTION
NTS



DETAIL "A"
NTS

Avoid cutting underground utility lines. It's costly.

Call before you Dig
1-800-227-2600

Avoid overhead power line contact. It's costly.

Call before you OVERHEAD
1-702-593-6111

Call before you UnderGround
1-702-455-7511
CLARK COUNTY TRAFFIC OPERATIONS
AND
1-702-229-6611
LAS VEGAS AREA COMPUTERIZED TRAFFIC SYSTEM

BASIS OF BEARING

THE BASIS OF BEARING IS A LINE BETWEEN THE N1/4 COR. OF SEC. 20, T. 19 S., R. 60 E., M.D.M., AND THE E1/16 COR. OF SAID SEC. 20, AS SHOWN ON EXHIBIT B OF DOC. 20030131-03151, WHICH IS THE DEDICATION OF ELKHORN ROAD, WHICH BEARS S 89°42'15" E.
CLV BENCHMARK #8LV90-2006
RIVET & PLATE IN CONCRETE CYLINDER NE CORNER OF EL CAPITAN & DORRELL
ELEVATION: 788.9015 METERS, 2588.25 FEET

REV.	DESCRIPTION:	DATE:	BY: