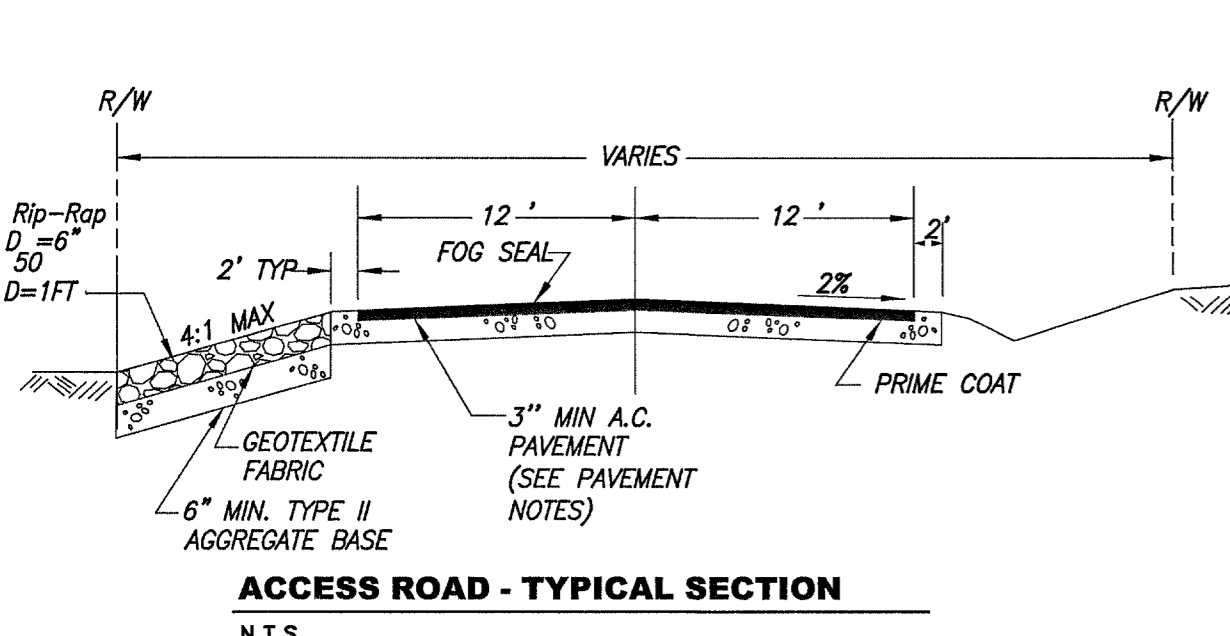
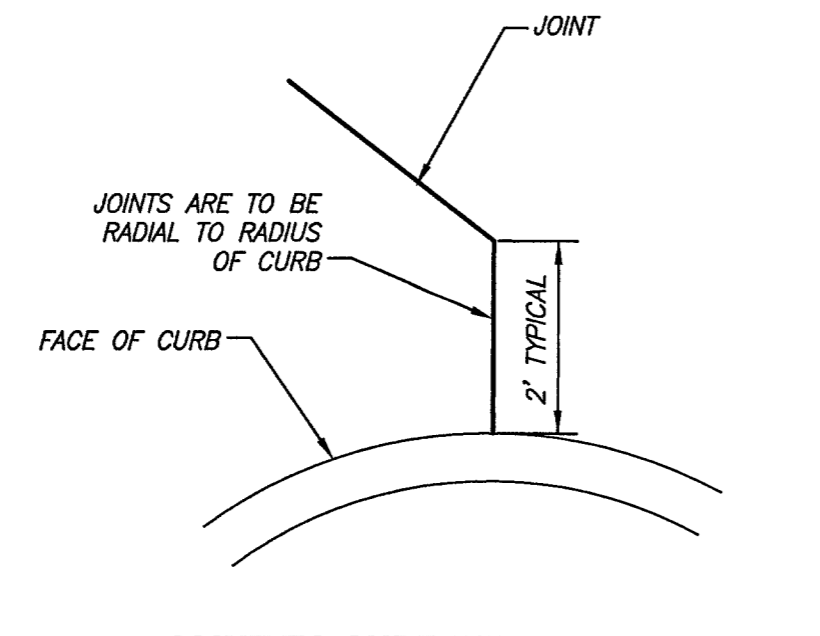


- PAVEMENT NOTES:**
- CONTRACTOR TO REFER TO GEOTECHNICAL REPORT PREPARED BY "CONVERSE CONSULTANTS, PROJECT No. 03-33414-02" FOR PAVEMENT RECOMMENDATIONS.
 - ASPHALTIC CONCRETE SHOULD BE MIXED AND PLACED IN ACCORDANCE WITH SECTION 401 OF THE "UNIFORM STANDARD SPECIFICATIONS FOR PUBLIC WORKS" CONSTRUCTION, "OFF-SITE IMPROVEMENTS, CLARK COUNTY AREA, NEVADA," LATEST EDITION (USSPWC).
 - TYPE II AGGREGATE BASE SHOULD CONFORM TO SUBSECTION 704.03.04 OF THE USSPWC. BASE MATERIALS SHOULD BE PLACED AND COMPACTED IN ACCORDANCE WITH SECTION 302 OF THE USSPWC.
 - SUBGRADE SHALL BE IN ACCORDANCE WITH GEOTECHNICAL REPORT, APPENDIX C - EARTH WORK SPECIFICATIONS.
 - ALL PORTLAND CEMENT CONCRETE SHALL HAVE A MINIMUM COMPRESSIVE STRENGTH OF 4000 PSI @ 28 DAYS, EXCEPT FOR SIDEWALKS WHICH SHALL HAVE A 3000 PSI @ 28 DAYS COMPRESSIVE STRENGTH.

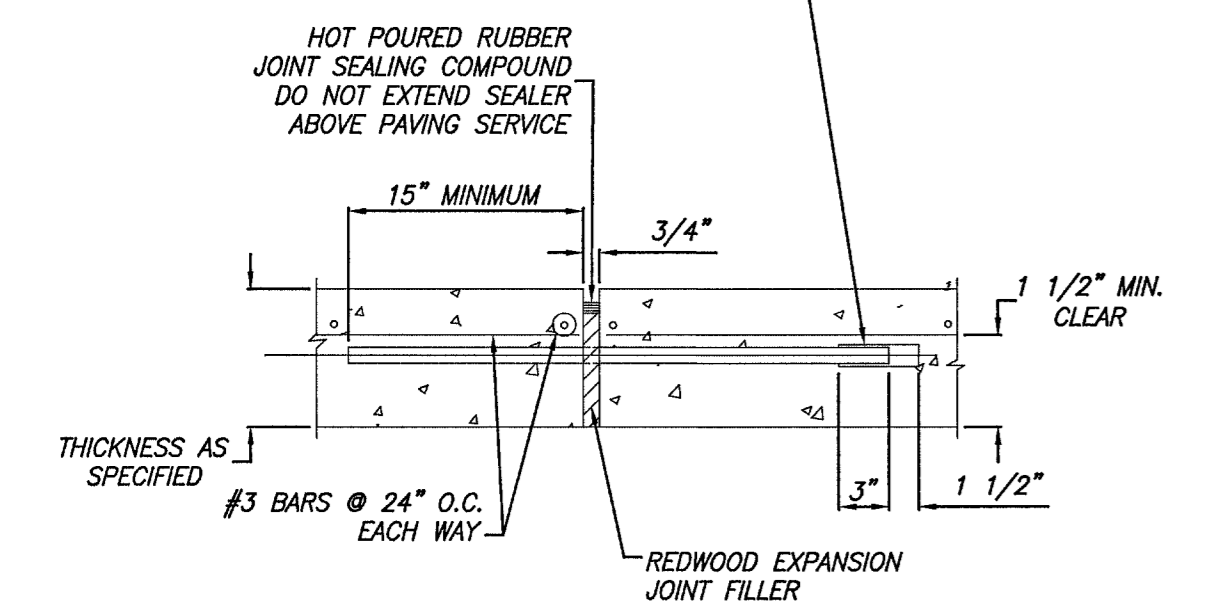


ACCESS ROAD - TYPICAL SECTION
N.T.S.

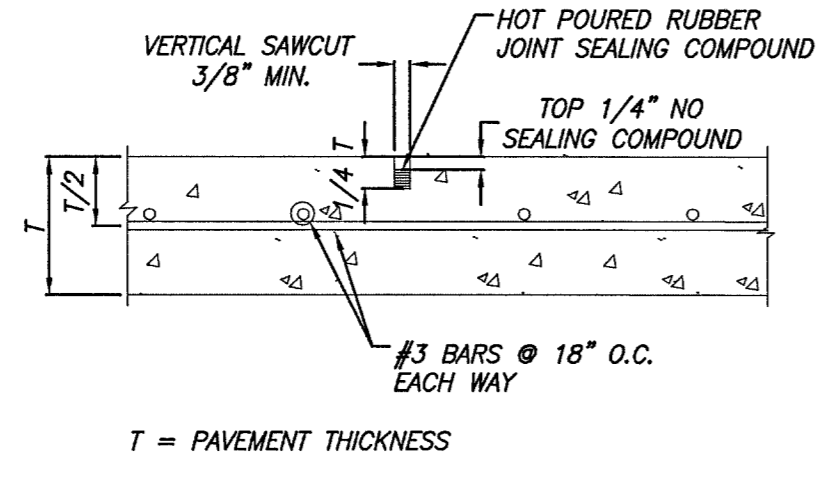


JOINT TO CURB DETAIL
N.T.S.

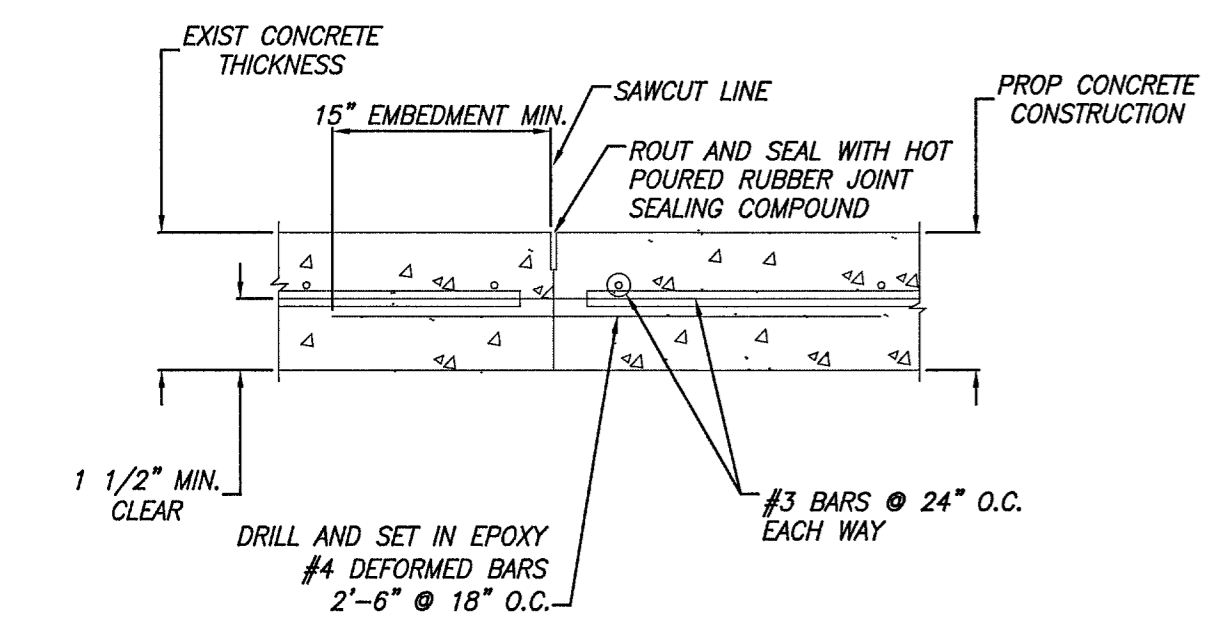
SLEEVE FOR GREASED DOWELS SHALL HAVE AN INSIDE DIAMETER THAT IS 1/16" GREATER THAN THAT OF THE OUTSIDE DIAMETER OF THE DOWEL AND THE SLEEVES ARE TO BE OF A QUALITY AND DESIGN SO AS TO PROVIDE FREE MOVEMENT OF THE GREASED DOWEL BAR. ALL DOWEL BARS ARE TO BE INSTALLED PERPENDICULAR TO THE EXPANSION JOINT AND HORIZONTAL. #6 SMOOTH BARS 2'-6" AT 18" CENTERS.



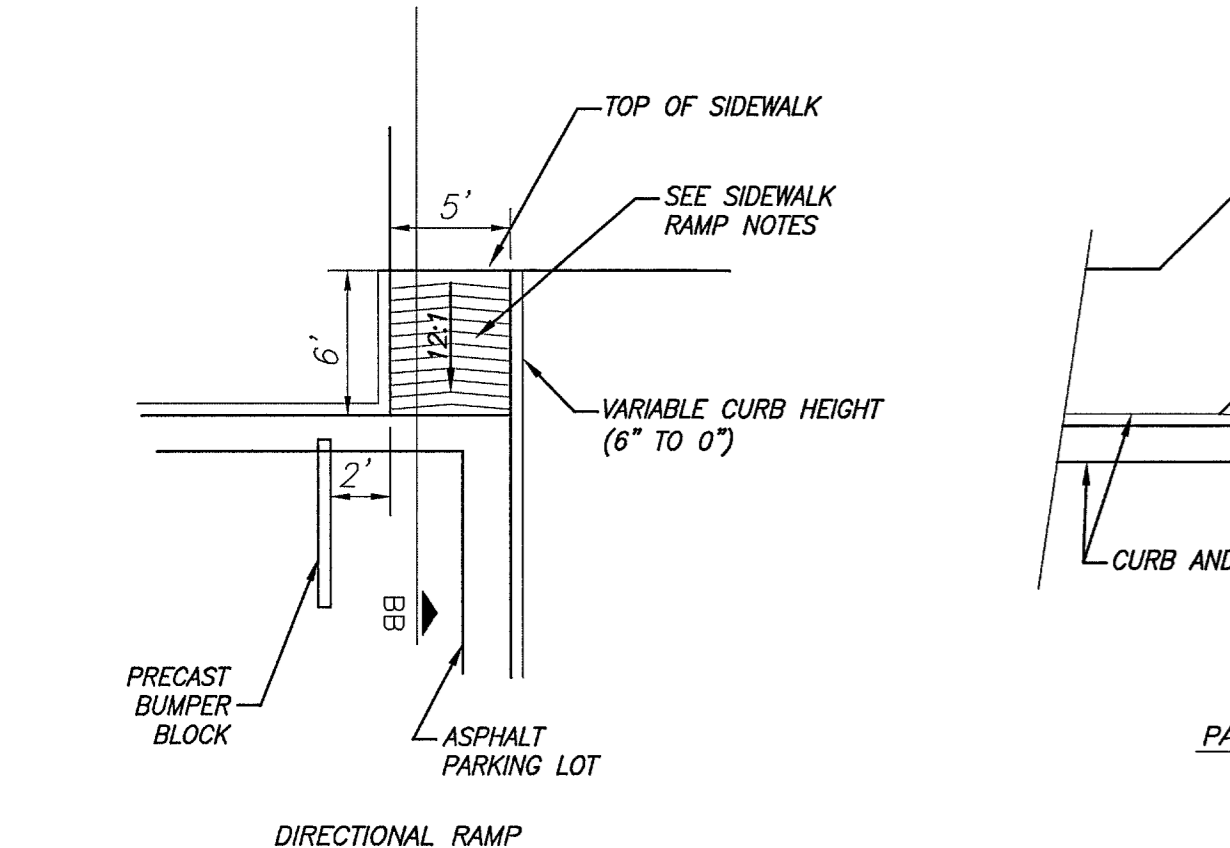
EXPANSION JOINT DETAIL
N.T.S.



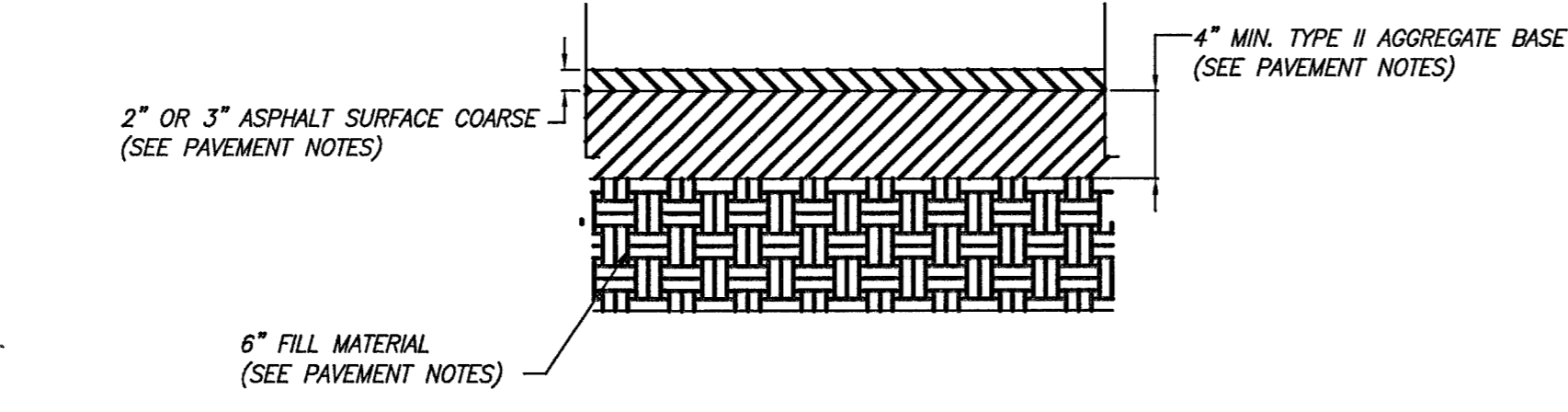
SAWED JOINT DETAIL
N.T.S.



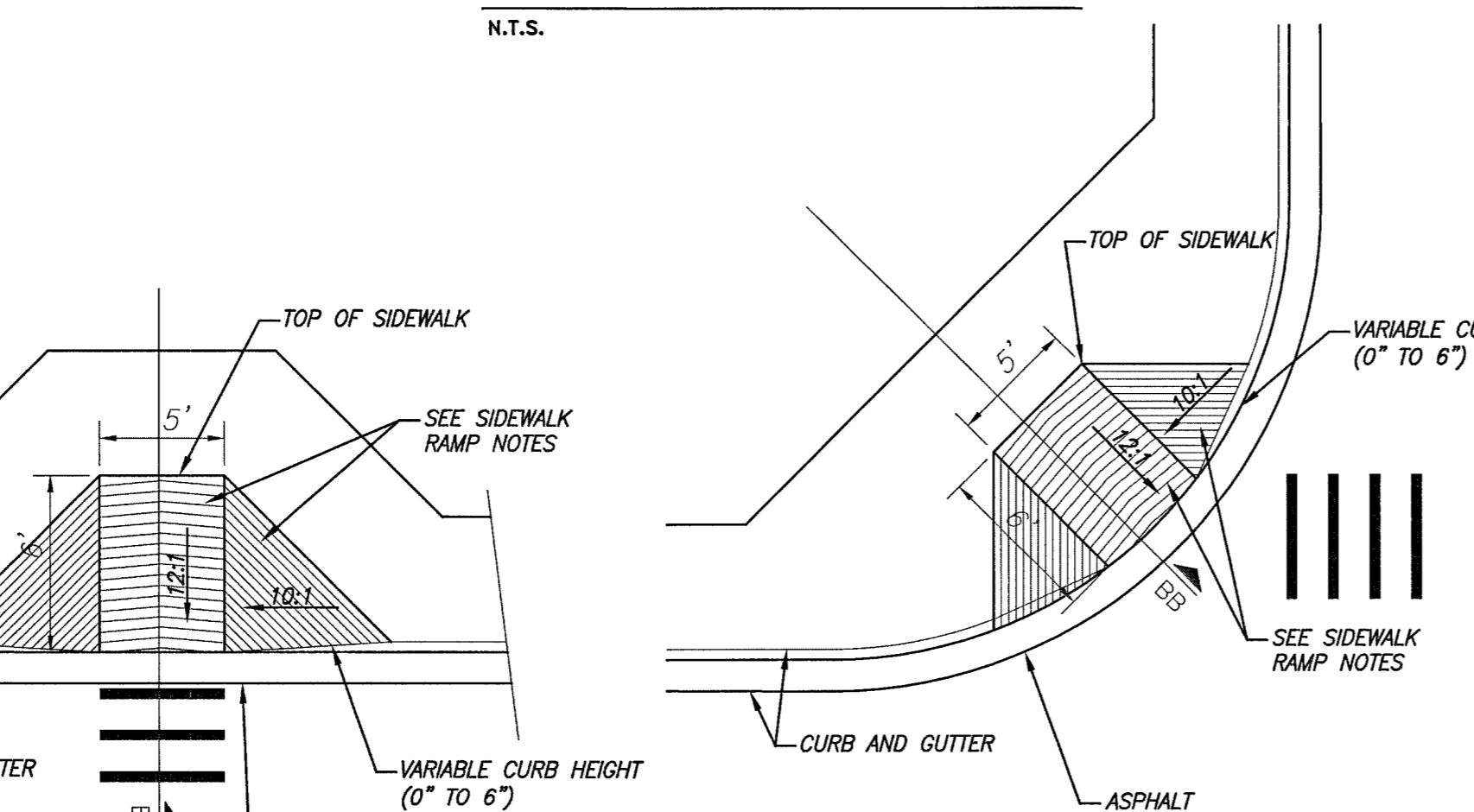
CONSTRUCTION JOINT DETAIL
N.T.S.



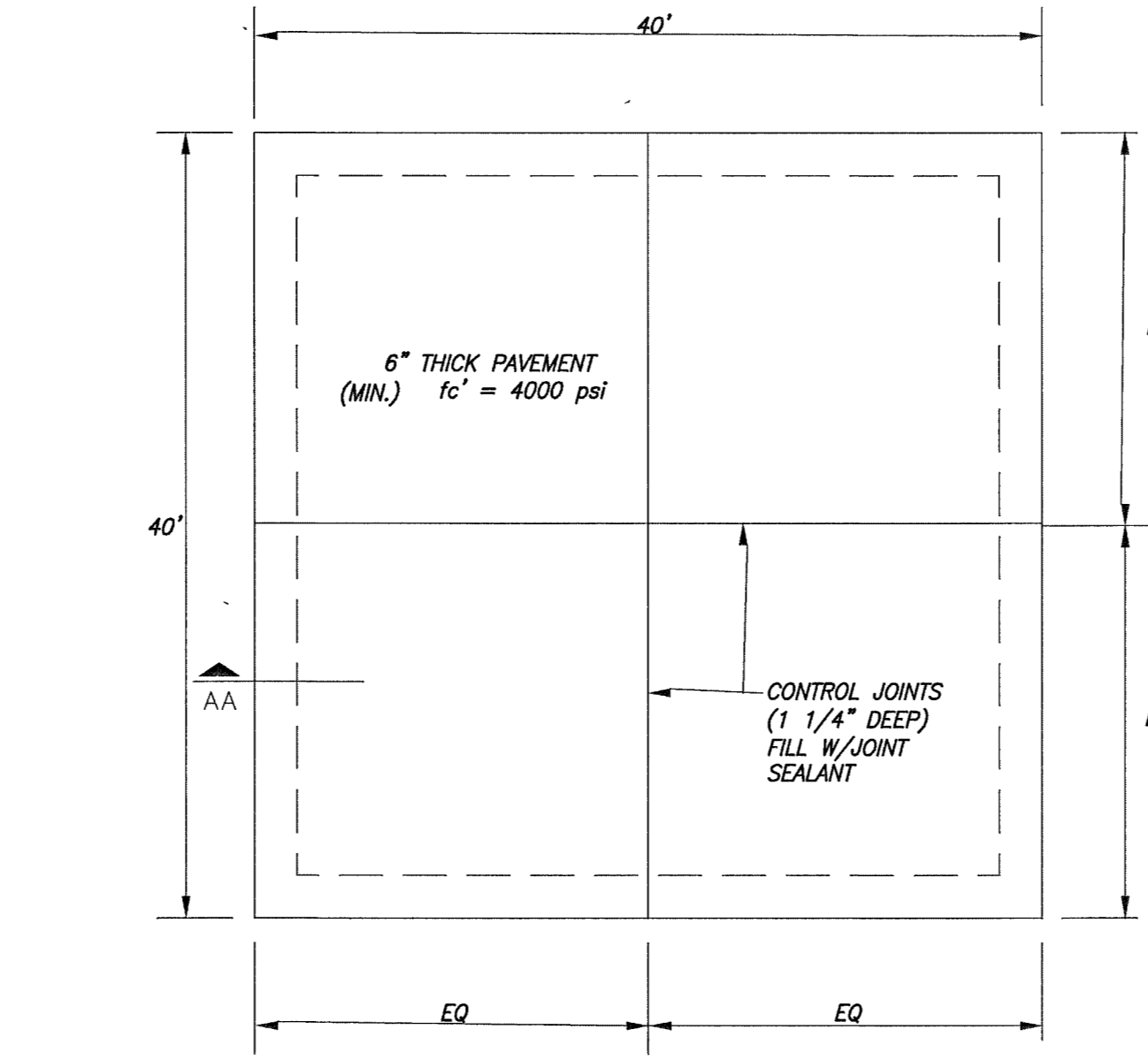
DIRECTIONAL RAMP
N.T.S.



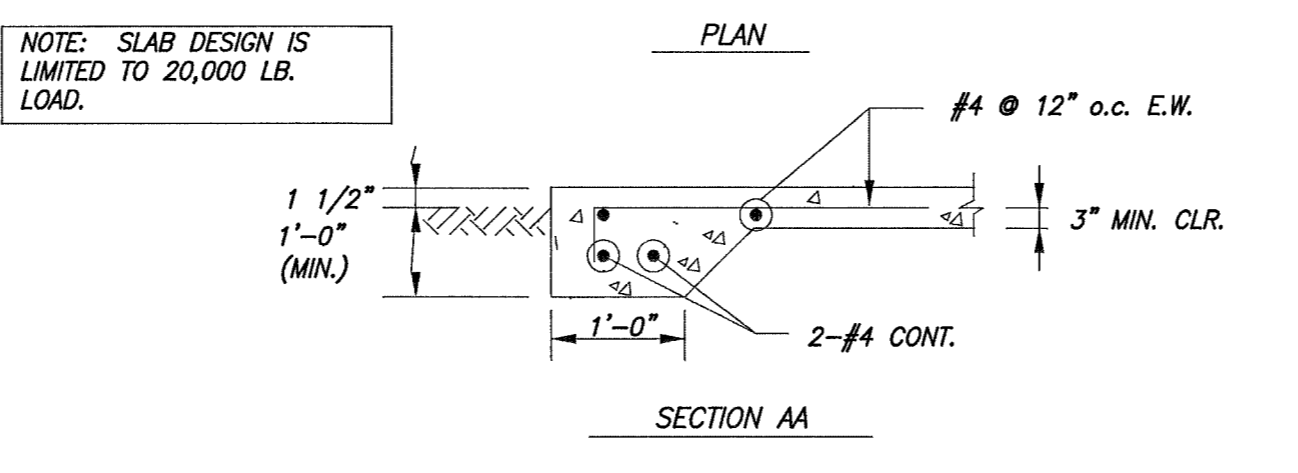
ASPHALT PAVEMENT DETAIL
N.T.S.



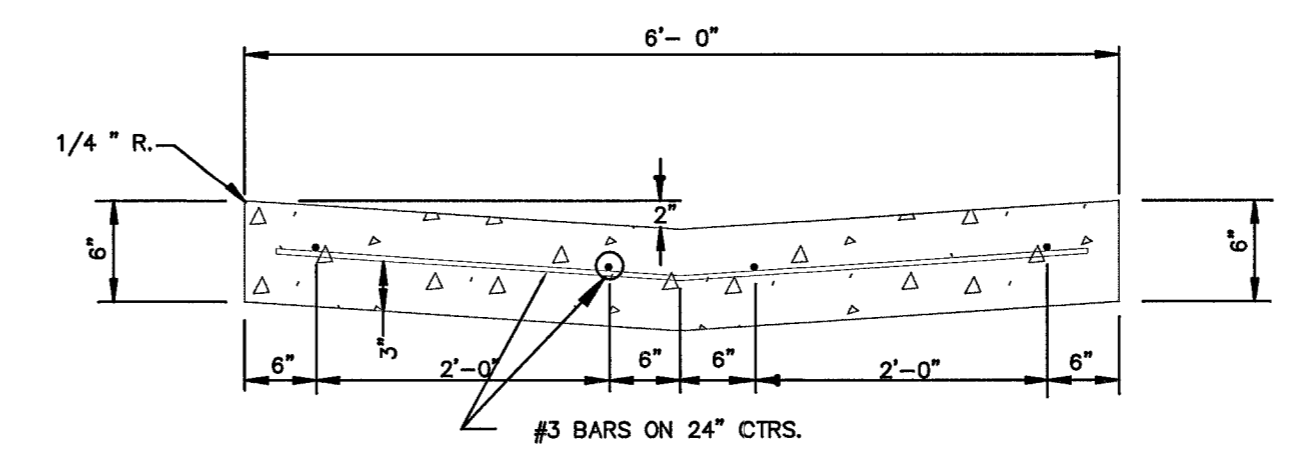
SIDEWALK RAMP DETAIL (ON-SITE)
N.T.S.



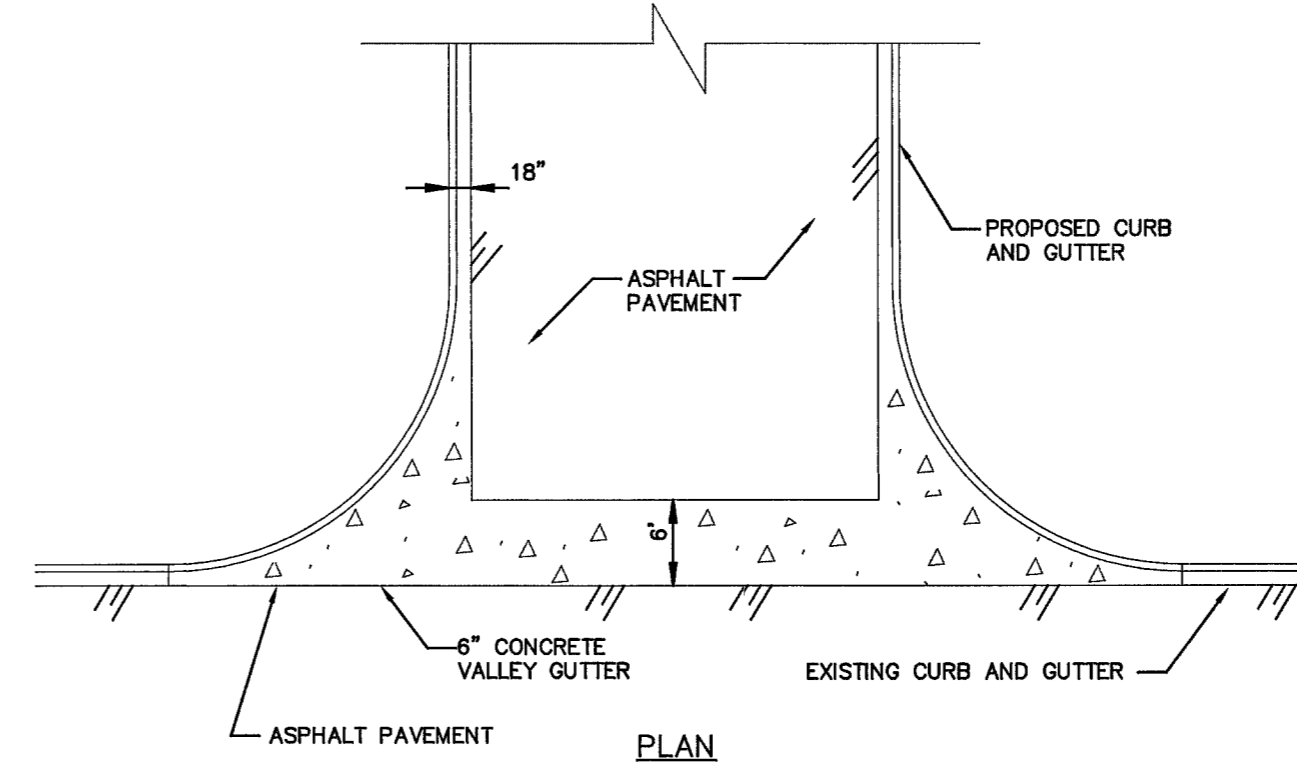
HELISTOP PAD DETAILS
N.T.S.



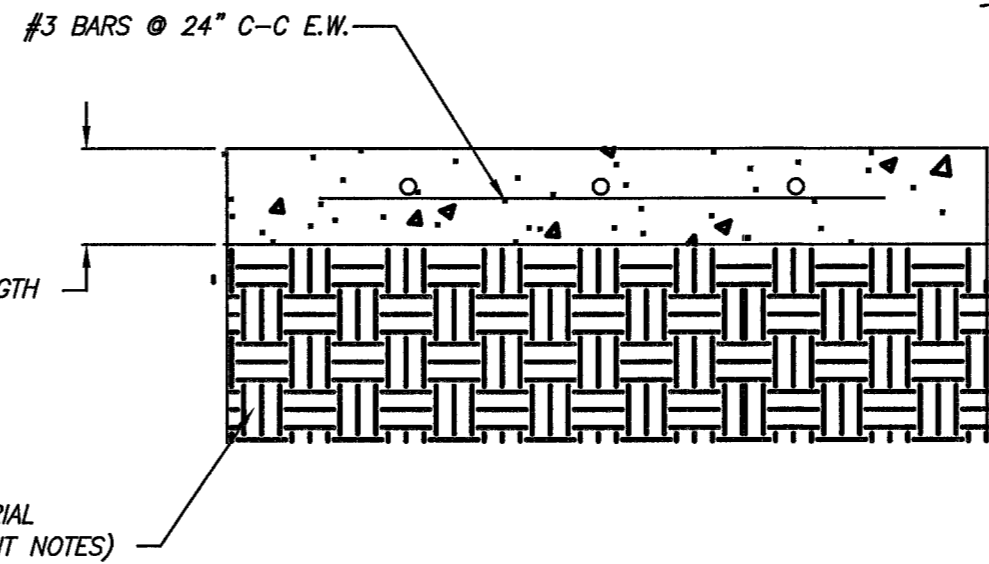
SECTION AA



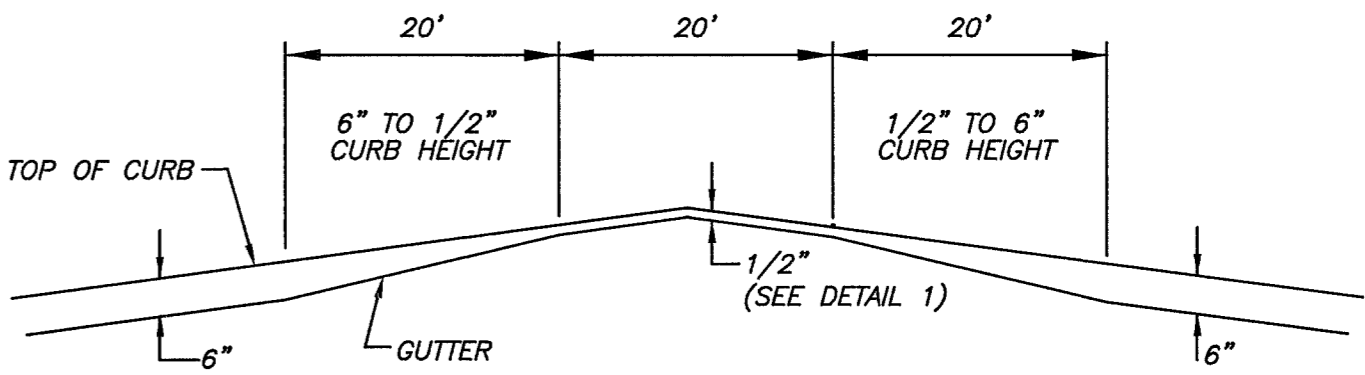
VALLEY GUTTER (ON-SITE)
N.T.S.



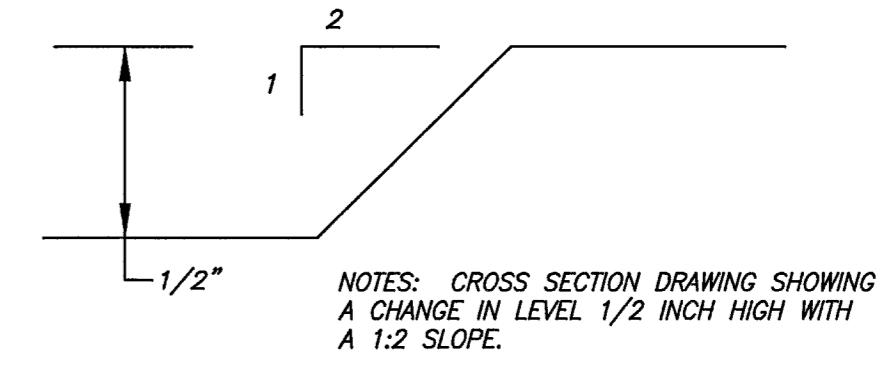
PROFILE



CONCRETE PAVEMENT DETAIL
N.T.S.



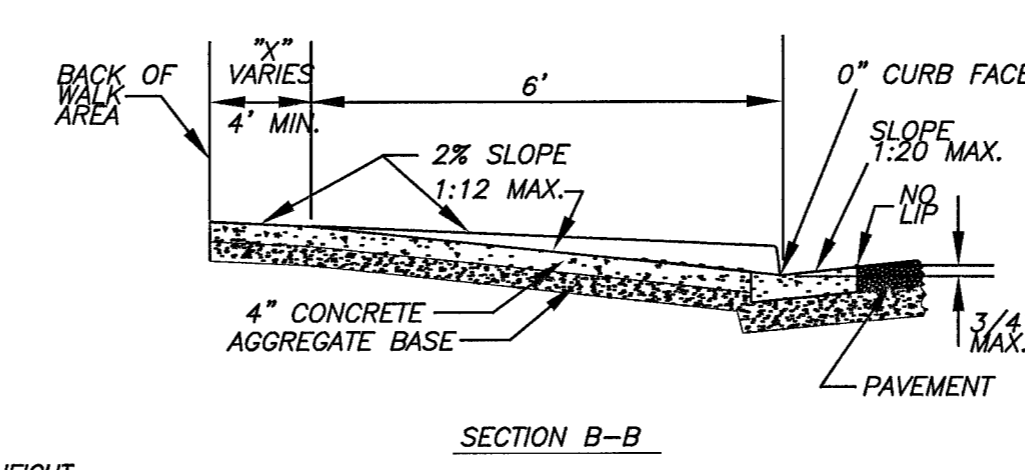
PROFILE OF CURB AT PASSENGER UNLOADING
N.T.S.



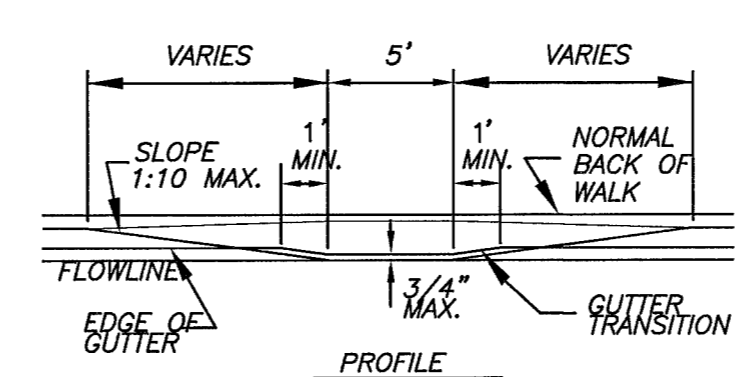
DETAIL 1
N.T.S.

SIDEWALK RAMP NOTES:

- MAXIMUM SLOPE OF CURB RAMP SHALL BE 1:12 (8.33%) - 5% RECOMMENDED.
- MAXIMUM SLOPE OF THE CURB RAMP'S "FLARED SIDES" SHALL BE 1:10 (10%).
- SLOPE AND CROSS-SLOPE OF A SIDEWALK LEADING INTO A CURB RAMP SYSTEM SHALL BE A MAXIMUM OF 1:20 (5%).
- MAXIMUM SLOPE OF A HANDICAPPED ACCESSIBLE ROUTE ALONG A SIDEWALK LEADING INTO A CURB RAMP, BEFORE IT MUST BE CONSIDERED A RAMP IS 1:20 (5%).
- ALL SLOPED SURFACES AT CURB RAMP SYSTEMS MUST HAVE A "SIGNIFICANT COLOR CONTRAST" FOR THE SEEING IMPAIRED. THEREFORE, ALL SUCH SLOPES MUST HAVE "INTEGRAL COLOR IN CONCRETE" OR "STAINED" CONCRETE, COMPARED TO THE ADJACENT "FLAT" SIDEWALK / PAVING SURFACES.
- SLOPED CURB-RAMP SURFACE TO HAVE TEXTURE (i.e. - FORMED / SAWCUT GROVES 3/4" WIDE X 1/4" DEEP @ 2" ON-CENTER FORMED PERPENDICULAR TO PATH OF TRAVEL FOR THE BLIND TO FEEL TEXTURE BENEATH THEIR FEET & FOR WHEELCHAIR TRACTION. ARRANGED SO WATER WILL NOT ACCUMULATE.
- MAXIMUM SLOPE AND CROSS-SLOPE OF HANDICAPPED ACCESSIBLE PARKING SPACE & ADJACENT ACCESS AISLE IS 1:50 (2%) IN ANY DIRECTION.



SECTION B-B



PROFILE

Avoid cutting underground utility lines. It's costly.

Avoid overhead power line contact. It's costly.

Call before you Dig
1-800-227-2600

Call before you OVERHEAD
1-702-593-6111

Call before you UnderGround
1-702-455-7511
CLARK COUNTY TRAFFIC OPERATIONS
AND
1-702-229-6611
LAS VEGAS AREA COMPUTERIZED TRAFFIC SYSTEM

REV.	DESCRIPTION:	DATE:	BY: