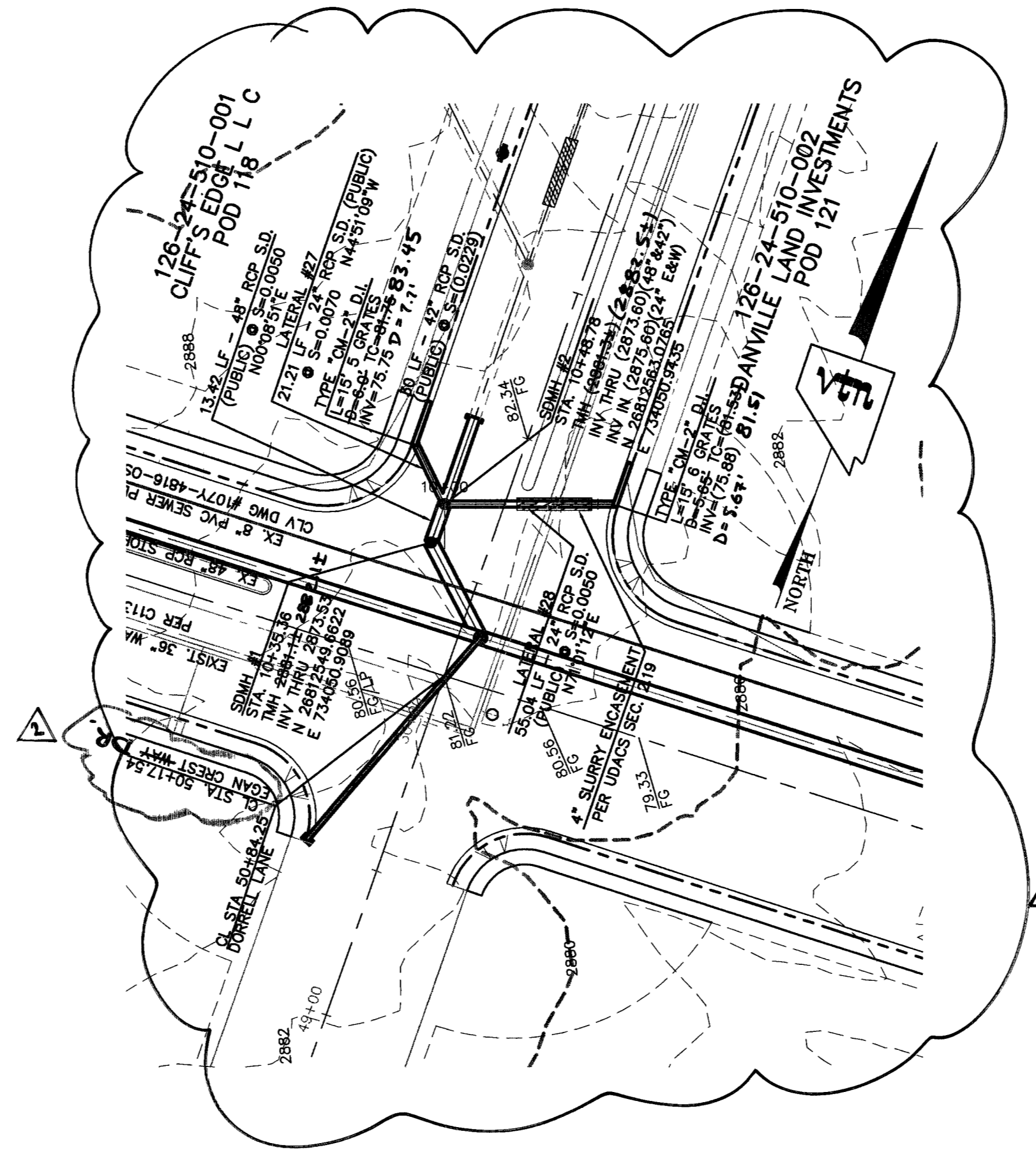
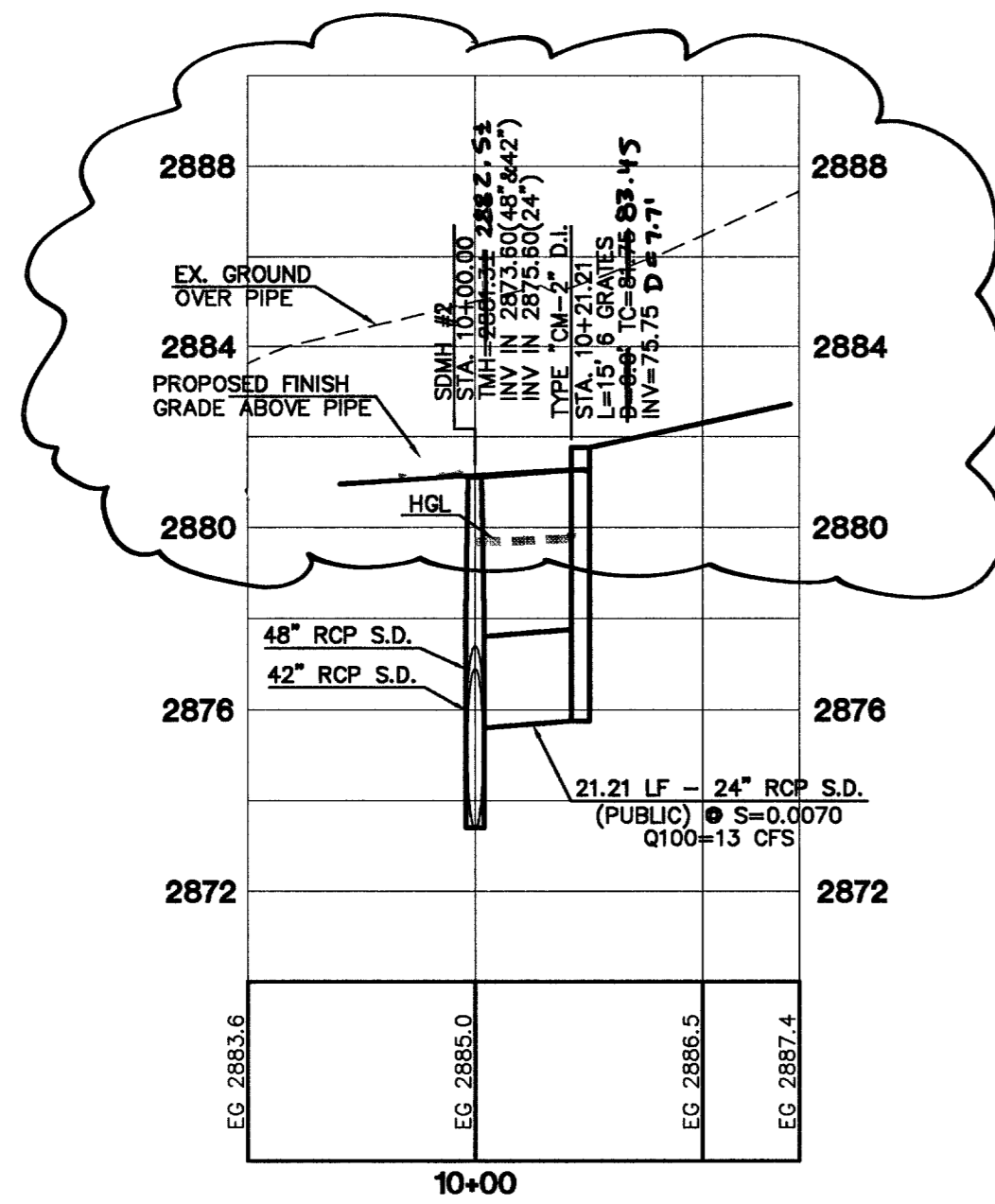
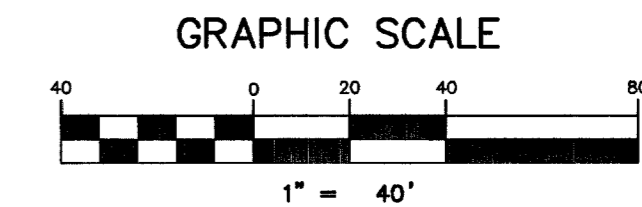
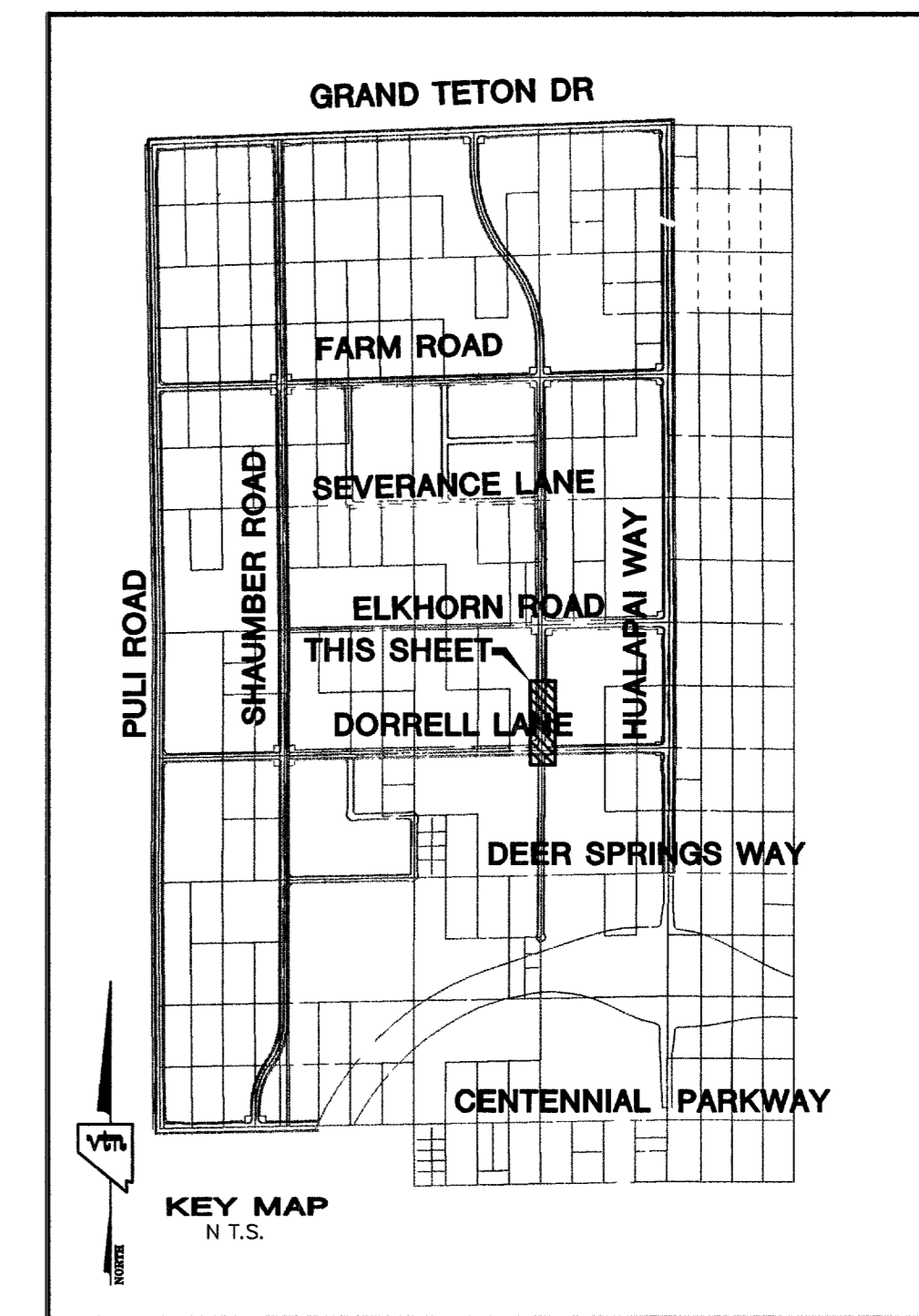
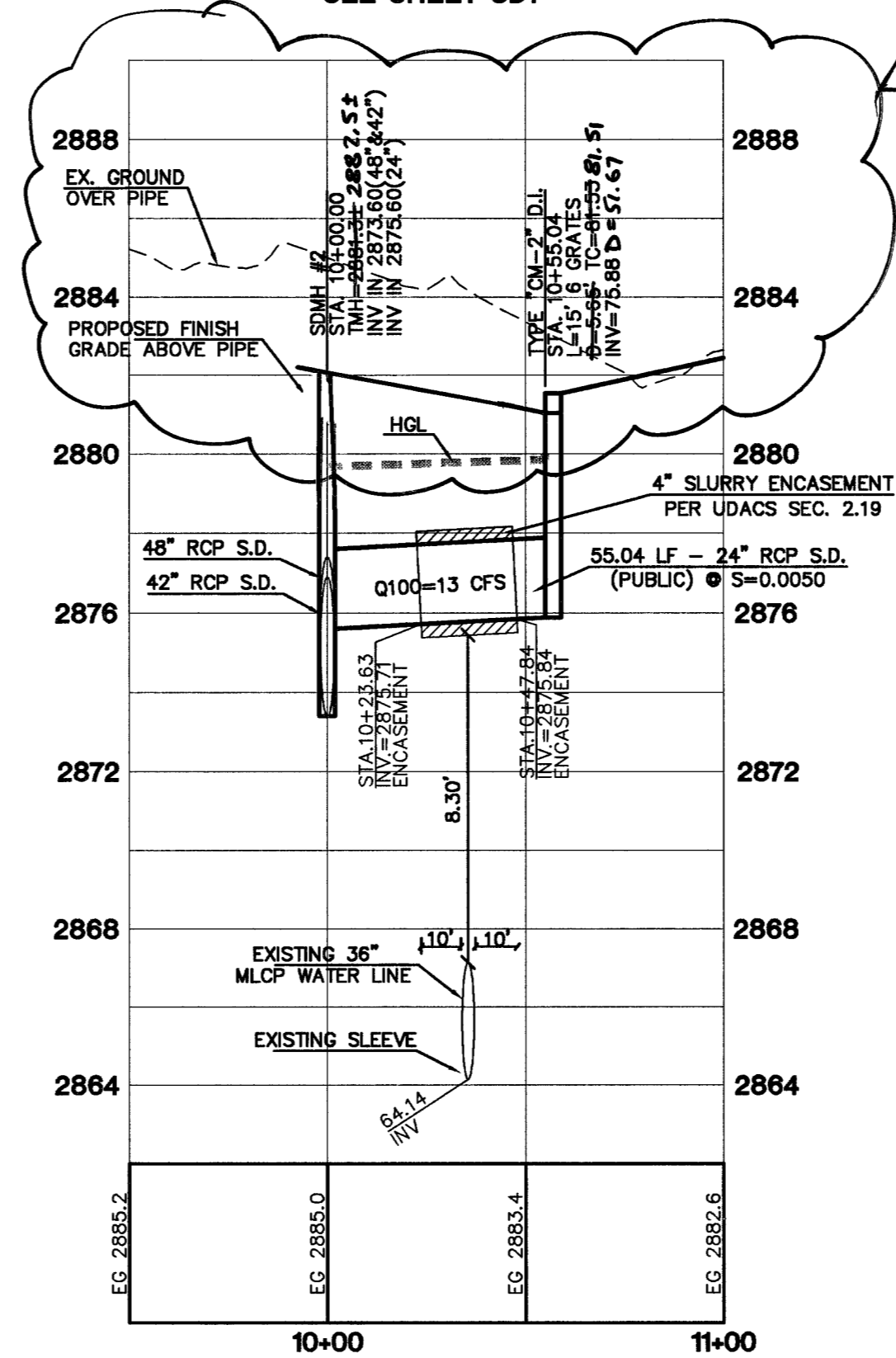


LATERAL #27
SEE SHEET SD1



LATERAL #28
SEE SHEET SD1



CONTRACTOR NOTE:
CONTRACTOR SHALL VERIFY HORIZONTAL AND VERTICAL LOCATION OF EXISTING UTILITIES AND NOTIFY THE DESIGN ENGINEER IMMEDIATELY OF ANY DISCREPANCIES PRIOR TO CONSTRUCTION.

NOTE:
STRUCTURAL CALCULATIONS FOR ALL NON-STANDARD DRAINAGE FACILITIES, SUCH AS JUNCTION BOXES AND OVERFLOW STRUCTURES, WILL BE PROVIDED WITH THE STRUCTURAL CALCULATIONS FOR THE RCA STORM DRAINS.

"I CERTIFY THAT THIS PLAN IS IN CONFORMANCE WITH THE APPROVED DRAINAGE STUDY ON FILE AT CITY OF LAS VEGAS FOR THIS PROJECT." DS3617
DANIEL J. HOOD NO. 12811 DATE 7-14-07

7	REVISION	DATE	BY
6			
5			
4			
3			
2	CHANGE LEGAL CLIFF'S EDGE L L C	1-12-05	L.A.M.
1	LA.M. RAISED THIS DRAWING TO BE DESIGN OF INTERSECTION		

CLIFFS EDGE LLC
3485 CLIFF SHADOWS PARKWAY, SUITE 280
LAS VEGAS, NEVADA 89129
(702) 777-1121

CITY OF LAS VEGAS, NEVADA

DORRELL LANE
CLIFFS EDGE / PROVIDENCE
PULLI ROAD TO HUALAPAI WAY

novada CONSULTING ENGINEERS • PLANNERS • LAND SURVEYORS

2727 SOUTH RAINBOW BOULEVARD LAS VEGAS, NEVADA 89146-5148
PH. (702) 873-7550 FAX (702) 382-2897

SCALE: 1"=40' HORIZ.
1"=4' VERT.

PROJECT NO: 5899

EXPIRES 06-30-07

PROFESSIONAL ENGINEER STATE OF NEVADA
DANIEL J. HOOD
No. 12811
CIVIL
7-14-07

SHEET
SD15
25 OF 30 SHEETS
DRAWING NO.
1074816-DW

0196122 03356 05907