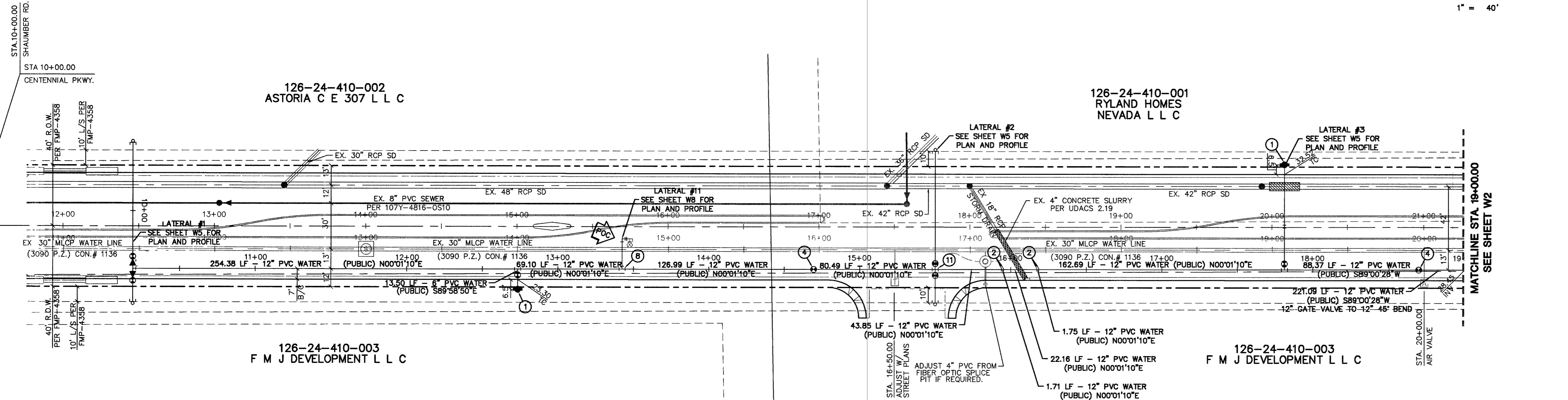
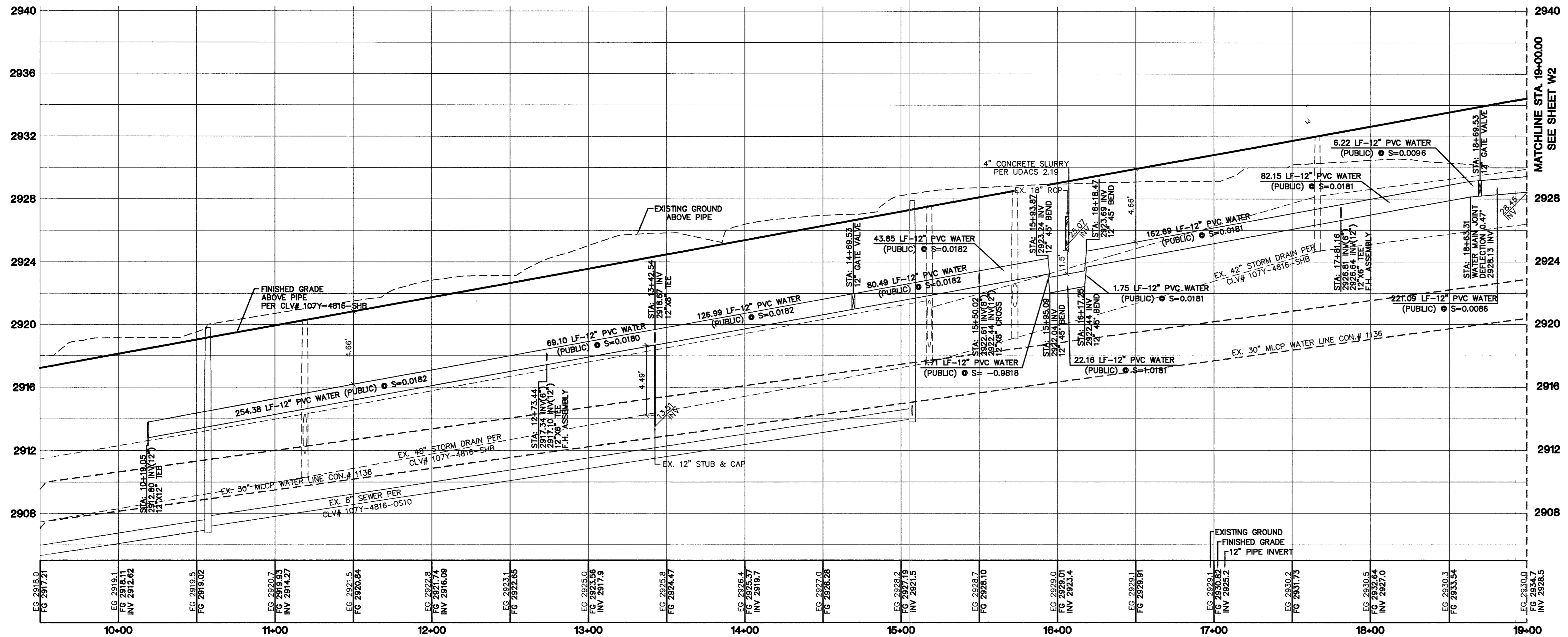
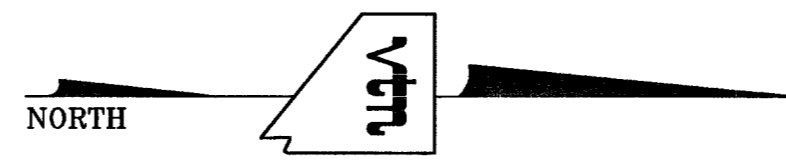


CENTENNIAL PKWY.



SHAUMBER ROAD (PUBLIC STREET)



LEGEND & QUANTITIES

WATER (PUBLIC)

1	FIRE HYDRANT & ASSEMBLY	7 EA.
2	12" x 6" TEE & 6" GV (udacs plate 7)	23 EA.
3	12" - 45" BEND	10 EA.
4	CAP W/ 2" BLOW OFF (udacs plate 4A)	9 EA.
5	12" - GATE VALVE	2 EA.
6	12" - 90° BEND	4 EA.
7	12" x 12" TEE	1 EA.
8	12" x 8" TEE	1 EA.
9	12" x 8" REDUCER	2 EA.
10	12" x 24" REDUCER	0 EA.
11	12" x 8" CROSS	1 EA.
12	8" x 8" TEE	0 EA.
13	8" - GATE VALVE	10 EA.
14	8" - 45" BEND	5 EA.
15	12" x 6" REDUCER	0 EA.
16	8" - 90° BEND	0 EA.
17	8" - 45" BEND	15 EA.
18	8" WATER MAIN (DIP)	105 LF.
19	8" WATER MAIN (DIP)	182 LF.
20	8" WATER MAIN (DIP)	228 LF.
21	8" WATER MAIN (PVC)	469 LF.
22	12" WATER MAIN (PVC)	3,861 LF.

POINT OF CONNECTION (UTILITIES) - REMOVE EXISTING CAP & B.O. CONNECT TO EX. WL PER UDACS PLT. 4A, NOTE 1

Call before you Dig

1-702-455-7511

CLARK COUNTY TRAFFIC OPERATIONS AND 1-702-229-6611

FREWAY AND ARTERIAL SYSTEM OF TRANSPORTATION

Call before you Dig

1-800-227-2600

Call before you Overhead

1-702-227-2929

BASIS OF BEARINGS
THE BASIS OF BEARINGS FOR THIS PROJECT IS NORTH 00°08'16" EAST BEING THE EAST LINE OF THE NORTHWEST QUARTER (NE 1/4) OF THE SECTION 24, TOWNSHIP 19 SOUTH RANGE 59 EAST M.D.M., CLARK COUNTY, NEVADA, AS SHOWN ON A RECORD OF SURVEY ON FILE IN THE CLARK COUNTY, NEVADA, RECORDER'S OFFICE IN FILE 123 AT PAGE 32.

PROJECT BENCHMARK
PROJECT DATUM: NORTH AMERICAN VERTICAL DATUM OF 1988 (NAV88)
CLARK COUNTY VERTICAL CONTROL: 1000.6N6
NAV88 ELEVATION: 787.794 METERS (2584.62 FEET)

RIVET AND SQUARE ALUMINUM PLATE IN A CONCRETE CYLINDER, LOCATED 25' SOUTH & 50' EAST OF GRAND CANYON DRIVE AND RED COACH AVENUE, 1' WEST OF ELECTRICAL VAULT.

CITY OF LAS VEGAS BENCHMARK
DATUM: NORTH AMERICAN VERTICAL DATUM OF 1988 (NAV88)
CITY OF LAS VEGAS BENCHMARK: BLV98-13SES
NAV88 ELEVATION: 889.806 METERS (2853.03 FEET)

RIVET AND PLATE IN CONCRETE CYLINDER NW CORNER OF HUALAPAI AND ELKHORN

NOTE: ADD 0.34' TO ABOVE CITY OF LAS VEGAS BENCHMARK, BLV98-13SES TO MATCH ORIGINAL PROJECT BENCHMARK, CLARK COUNTY BENCHMARK 1000-6N6 (2584.62 FEET) AS SHOWN ON RECORD OF SURVEY FILE 124 PAGE 94.

ADJUST EXISTING WATER VALVE BOX TO FINISHED GRADE PER UDACS PLATE NO. 8. VALVE SHALL BE ACCESSIBLE AT ALL TIMES.

NOTE: INSTALL PIPELINE MARKER BALLS IN TRENCH ABOVE EACH HORIZONTAL ELBOW FITTING, PER UDACS PLATE NO. 27. ESN.062 REVISED 06/01/04

APPROVED FOR CONSTRUCTION

Las Vegas Valley Water District PROJ. 111382 Date

ANNULAR SPACE BETWEEN PIPE AND CASING SHALL BE FILLED WITH CLASS 1 CLSM

INSTALL WATERLINE IN STEEL CASING PER UDACS PLATES No. 15 AND No. 16. MINIMUM 18-INCH CLEARANCE IS REQUIRED ABOVE THE TOP OF THE CASING. FROM THE UPPER BENDS THROUGHOUT THE LOWERED SECTION OF PIPE, DUCTILE IRON PIPE WITH RESTRAINED JOINTS IS REQUIRED. IN ADDITION, THRUST BLOCKS ARE TO BE INSTALLED AT THE UPPER BENDS. ESN.038

ALL SEWER/STORM DRAIN CROSSING WATER LINES MUST CONFORM TO SECTION 2.19 OF THE UNIFORM DESIGN AND CONSTRUCTION STANDARDS FOR POTABLE WATER SYSTEMS (UDACS) FOR WATER AND STORM MAIN CROSSING AND CLEARANCES. ESN.064

CONTRACTOR NOTE
CONTRACTOR SHALL VERIFY HORIZONTAL AND VERTICAL LOCATION OF EXISTING UTILITIES AND NOTIFY THE DESIGN ENGINEER IMMEDIATELY OF ANY DISCREPANCIES PRIOR TO CONSTRUCTION.

WATER MAIN JOINT DEFLECTION (PVC, 4" - 24")
PVC PIPE SHALL BE DEFLECTED AT THE JOINT ONLY. THE MAXIMUM ALLOWABLE DEFLECTION SHALL BE ONE (1) DEGREE PER JOINT WITH A MINIMUM RADIUS OF CURVATURE OF 1,150 FEET, PER UDACS 2.06.02.

FOR CHANGES IN DIRECTION EXCEEDING THE MAXIMUM ALLOWABLE JOINT DEFLECTION, FITTINGS SHALL BE USED. ESN.059

RELOCATE SIX (6) INCH MANUAL BLOW-OFF ASSEMBLY PER UDACS PLATE NO. 4B ADJUST TO FG. ESN.046
REVISED 06/01/04

INSTALL/RELOCATE 4 INCH COMBINATION AIR VALVE ASSEMBLY PER UDACS PLATE NO. 37. ESN.047

THIS PROJECT PROVIDES FOR THE INSTALLATION OF OFF-SITE MAINS ONLY, AND DOES NOT PROVIDE OR IMPLY ANY WATER COMMITMENT. ESN.054

This property may have static water pressure in excess of 80 psi. The Uniform Plumbing Code requires that individual, on-site (private), pressure reducing valves be installed whenever the pressure exceeds 80 psi. PVC's or the Developer's responsibility and will not be inspected or included in the acceptance of LVWD facilities. ESN.041

CLIFFS EDGE LLC
3455 CLIFF SHADOWS PARKWAY, SUITE 290
LAS VEGAS, NEVADA 89129
(702) 777-1121

CITY OF LAS VEGAS, NEVADA
2727 SOUTH RAINBOW BOULEVARD LAS VEGAS, NEVADA 89146-5148
PH. (702) 873-7550 FAX (702) 862-2997
LAS VEGAS, NEVADA 89129
CLIFFS EDGE / PROVIDENCE
SHAUMBER PKY. TO DORRELL LN.
CENTENNIAL PKY.

WATER PLAN AND PROFILE
STA. 9+99.05 TO 19+00.00

CLIFFS EDGE / PROVIDENCE
SHAUMBER PKY. TO DORRELL LN.
CENTENNIAL PKY.

DRAWN BY: S.PAPPA
DESIGNED BY: L.MISURA
CHECKED BY:
PROJECT NO: 5889

APR. 05' APR. 05'

SCALE: 1"=40' HORIZ.
1"=4' VERT.

SHEET
W1
4 OF 11 SHEETS
DRAWING NO.
107-4916-DW-5