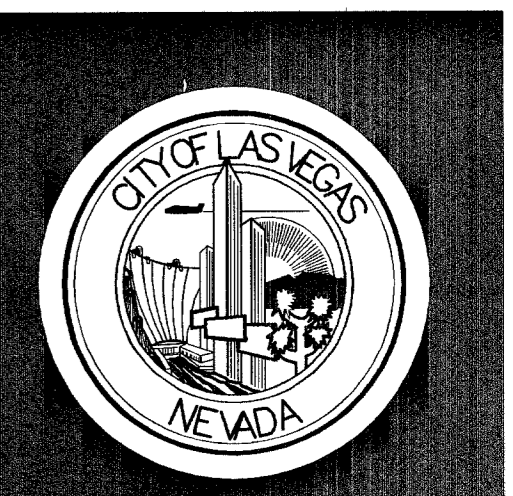
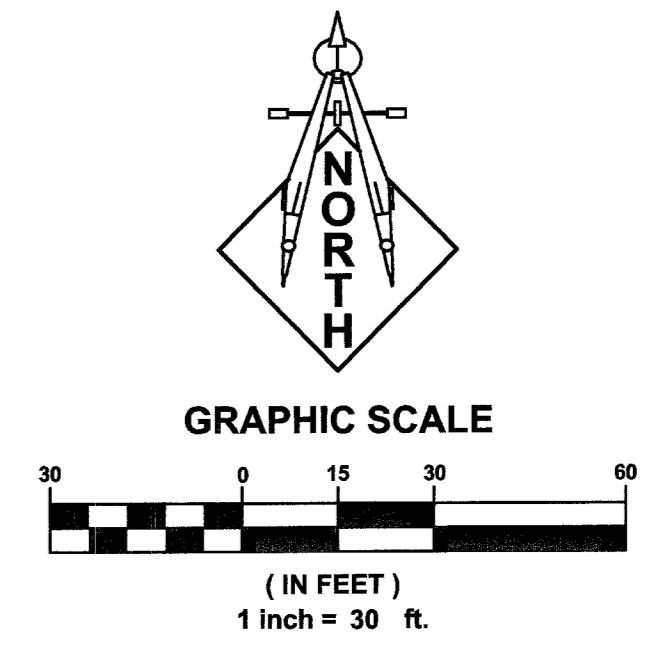
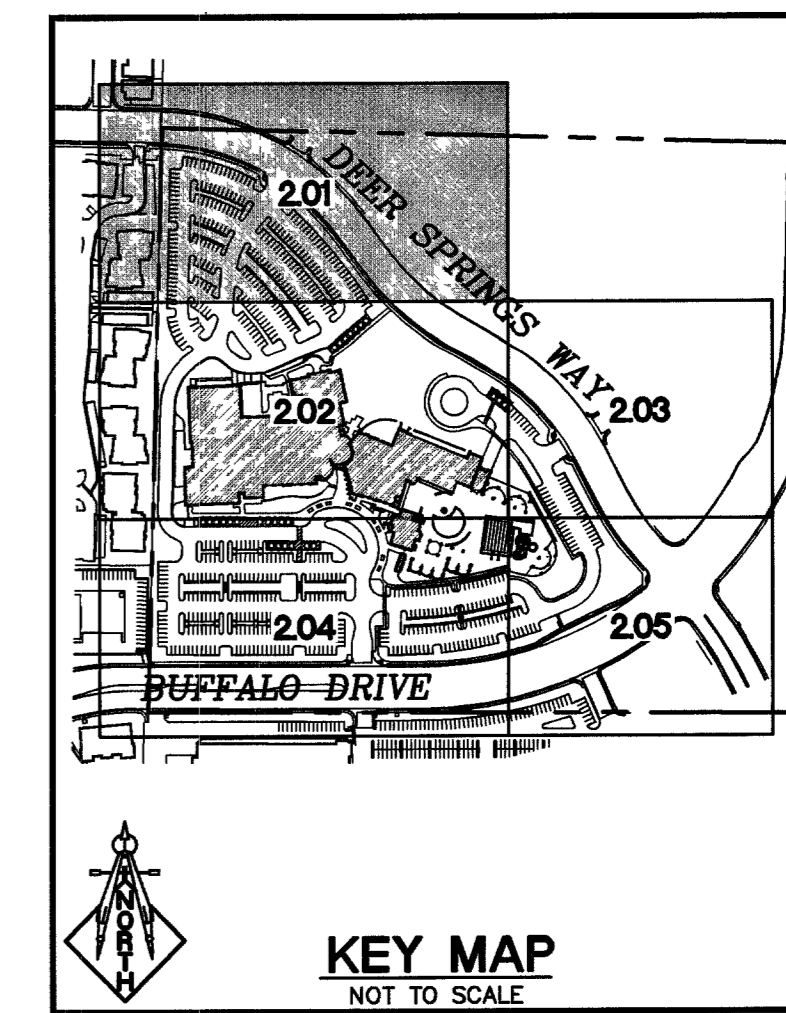


MATCHLINE - SEE SHEET C3.02



CONSULTANT
LOCHSA ENGINEERING
 6346 SOUTH JONES BOULEVARD SUITE 400
 LAS VEGAS, NV 89118
 PHONE: (702) 365-8512 FAX: (702) 365-8317

CITY OF LAS VEGAS
CENTENNIAL HILLS COMMUNITY CENTER
 GRADING PLAN
 1 OF 5

GEOTECHNICAL NOTE:
 A GEOLOGIST OR GEOTECHNICAL ENGINEER SHALL BE ON SITE DURING EXCAVATION AND MASS GRADING OPERATIONS TO EXAMINE THE SOIL CHARACTERISTICS AND GEOLOGICAL CONDITIONS ENCOUNTERED, AND TO PROVIDE PROFESSIONAL ADVICE TO THE OWNER IN THE EVENT THAT UNANTICIPATED SOIL PROBLEMS ARISE AND/OR SUBSURFACE SITE CONDITIONS ARE FOUND TO BE SIGNIFICANTLY DIFFERENT THAN DEFINED BY PRE-DESIGN EXPLORATION AND TESTING.

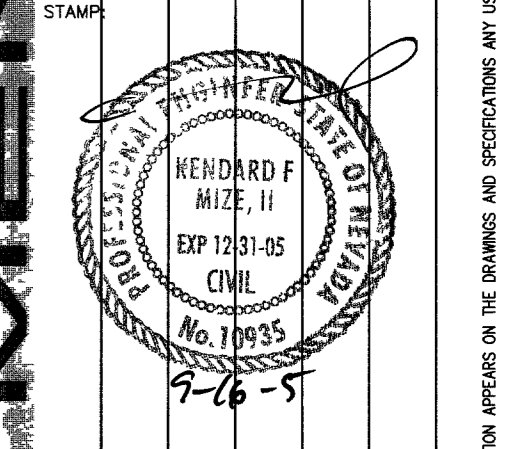
GRADING PLAN CERTIFICATION
 NAME: KENDAR F. MIZE, II PE #10935 DATE: 7-16-05
 CERTIFY THAT THIS GRADING PLAN IS IN CONFORMANCE WITH APPROVED DRAINAGE STUDY FOR THIS SITE ON FILE AT CITY OF LAS VEGAS FOR THIS PROJECT.

NOTE:
 LOCHSA ENGINEERING ASSUMES NO RESPONSIBILITY FOR EXISTING UTILITY LOCATIONS AND ELEVATIONS. THE UTILITIES SHOWN ON THIS PLAN ARE FROM THE BEST AVAILABLE INFORMATION. IT IS THE CONTRACTOR'S RESPONSIBILITY TO FIELD VERIFY THE LOCATION AND ELEVATION OF ALL UTILITIES, INCLUDING BUT NOT LIMITED TO, THE WATER, FIRE, SANITARY SEWER, STORM SEWER, TELEPHONE, POWER, GAS, AND IRRIGATION LINES PRIOR TO THE COMMENCEMENT OF THE CONSTRUCTION. IF CONFLICT EXISTS IN THE FIELD, THE CONTRACTOR IS TO NOTIFY THE PROJECT ARCHITECT, OWNER'S REPRESENTATIVE AND THE PROJECT ENGINEER IMMEDIATELY.

A.P.N.:
 A PORTION OF 125-21-701-011.
BASIS OF BEARINGS:
 THE NORTH LINE OF THE NE ¼ OF THE NE ¼ OF SECTION 21, TOWNSHIP 19 SOUTH, RANGE 60 EAST, M.D.M., BEARS S86°49'12"E PER RECORD OF SURVEY, FILE 74, PAGE 30 OF SURVEY, OFFICIAL RECORDS OF CLARK COUNTY, NEVADA.

BENCHMARK:
 MN CLV 81690 21EB
 RIVET & PLATE IN TOP OF CURB ON THE NORTH SIDE OF DEER SPRINGS ¼ MILE WEST OF BUFFALO.
 ELEV.=2427.22 FEET =739.8168 METERS, NAVD 88
 Avoid cutting underground utility lines. It's costly.

SAFETY ALERT
 Call before you Dig
 Call Before You Overhead
 1-800-227-2600 1-702-227-2929



DEPARTMENT OF PUBLIC WORKS
 ARCHITECTURAL SERVICES
 400 EAST STEWART AVENUE
 LAS VEGAS, NEVADA 89101
 PHONE: (702) 226-8888
 FAX: (702) 226-8889
 TDD: (702) 226-8708

SUBMITAL	100%
DRAWN	DsW
DATE	03-18-05
SCALE	1"=30'
PROJECT	CENTENNIAL HILLS COM. CNTR.
SHT NO	

C3.01
 SHEET 10 OF 31

DEER SPRINGS WAY CONSTRUCTION NOTES:

1. DEER SPRINGS WAY IMPROVEMENTS, INCLUDING BUT NOT LIMITED TO, SIDEWALK, CURB AND GUTTER, STREETLIGHTS, UTILITY LINES, FIRE HYDRANTS, ETC. WILL BE PER THE DEER SPRINGS PARK - PHASE 2A PLANS BY STANTEC, CLV PROJECT NUMBER 107V4288.

GRADING NOTES:
 1. SLOPES 4:1 OR STEEPER AND FINE-GRAINED MATERIALS THAT HAVE BEEN DISTURBED (SANDY AND SILTY MATERIALS) SHOULD BE PROTECTED WITH BURLAP OR OTHER EROSION CONTROL FABRIC/MATERIAL, UNLESS OTHERWISE SPECIFIED BY LANDSCAPE DRAWINGS AND SPECIFICATIONS OR THE SOILS REPORT.

2. CONTRACTOR SHALL DETERMINE HIS OWN FOOTING OR BASEMENT EXCAVATION QUANTITIES, EVEN THOUGH SHOWN ON ROUGH GRADING PLANS. ADDITIONALLY, STRUCTURE BACKFILL COSTS SHOULD BE INCLUDED IN THE COST OF THE STRUCTURE, UNLESS OTHERWISE SPECIFIED IN THE CONTRACT DOCUMENTS.

3. CONTRACTOR SHALL NOTIFY LOCHSA ENGINEERING WITHIN 24 HOURS OF OMISSIONS AND ERRORS DISCOVERED ON PLANS. LOCHSA ENGINEERING WILL NOT BE RESPONSIBLE FOR ANY "CORRECTIVE" WORK DONE BY OTHERS.

STORM DRAIN CONSTRUCTION NOTES:

- NOT ALL NOTES USED ON THIS SHEET
 - 1) STUB STORM DRAIN SERVICE. REFER TO PLUMBING PLANS FOR CONTINUATION.
 - 2) ROOF DRAIN LOCATION. REFER TO PLUMBING PLANS FOR CONTINUATION.
 - 3) CONSTRUCT POLY TRENCH DRAIN PER DETAIL 9-C5.01
 - 4) CONSTRUCT HEADWALL PER NDOT STANDARD R-2.7.1. ALSO SEE DETAIL 1-C5.07. RIP-RAP AT HEADWALL ENDS TO BE d50=6", DEPTH=12"
 - 5) CONSTRUCT HEADWALL PER DETAIL 1-C5.06. RIP-RAP AT HEADWALL END TO BE d50=6", DEPTH=12"
 - 6) CONSTRUCT 12" X12" CATCH BASIN W/1' CONCRETE COLLAR, SEE DETAIL 2-C5.07
 - 7) CONSTRUCT 24"X24" CATCH BASIN, W/1' CONCRETE COLLAR, SEE DETAIL 2-C5.07
 - 8) CONSTRUCT 36"X36" CATCH BASIN, W/1' CONCRETE COLLAR, SEE DETAIL 2-C5.07
 - 9) INSTALL 6" STANDARD CLEAN OUT, SEE DETAIL 4-C5.04
 - 10) INSTALL BIOPFILTER STANDPIPE AND DRAIN PER DETAIL 4-C5.07
 - 11) CONTINUATION OF DECK DRAINS, REFER TO POOL DECK PLANS SHEET DP-3.
- REFER TO SHEETS C2.01 THROUGH C2.05 FOR ADDITIONAL STORM DRAIN INFORMATION.

CONSTRUCTION NOTES:

- ALL CONSTRUCTION TO BE DONE IN ACCORDANCE WITH "CLARK COUNTY AREA UNIFORM STANDARD DRAWINGS (C.C.A.U.S.D.)" LATEST EDITION AND/OR REGULATING ENTITY HAVING JURISDICTION.
- NOT ALL NOTES USED ON THIS SHEET -
- 1) CONSTRUCT AC PAVEMENT PER DETAIL 1-C5.01.
- 2) CONSTRUCT CONCRETE PAVEMENT PER DETAIL 4-C5.01.
- 3) CONSTRUCT "A" TYPE CURB PER DETAIL 5-C5.01.
- 4) CONSTRUCT "L" TYPE CURB PER DETAIL 6-C5.01.
- 5) CONSTRUCT CONCRETE SIDEWALK PER DETAIL 7-C5.01.
- 6) CONSTRUCT 2" CONCRETE VALLEY GUTTER PER DETAIL 2-C5.01.
- 7) CONSTRUCT 0" FACE OF CURB.
- 8) CONSTRUCT TRANSITION FROM 0" CURB FACE TO 6" CURB FACE.
- 9) CONSTRUCT 2" CURB OPENING.
- 10) CONSTRUCT "U" GUTTER PER DETAIL 3-C5.01.
- 11) CONSTRUCT TRASH ENCLOSURE PER ARCH. PLANS AND SPECIFICATIONS.
- 12) CONSTRUCT HANDICAP RAMP PER DETAIL 3-C5.04.
- 13) SAWCUT & REMOVE EXISTING AC PAVEMENT.
- 14) CONSTRUCT CMU SCREEN WALL PER DETAIL 6-C5.03.
- 15) CONSTRUCT SIDEWALK UNDERDRAIN PER DETAIL 8-C5.01.
- 16) INSTALL PRE-CAST BUMPER BLOCK PER DETAIL 1-C5.04.

CONSTRUCTION NOTES:

- (CONTINUED)
- 17) SAWCUT AND MATCH EXISTING.
- 18) CONSTRUCT SWALE PER DETAIL 2-C5.04.
- 19) CONSTRUCT HANDICAP RAMP IN ACCORDANCE WITH "TOWN CENTER AREA" STANDARDS DWG. #TC-1, (SEE A-C5.06) REFER TO C.C.A.U.S.D. #235 FOR MIN. RAMP SLOPES (DETAIL 3-C5.06).
- 20) CONSTRUCT 8" CROSS GUTTER PER DETAIL 4-C5.06
- 21) CONSTRUCT COMMERCIAL DRIVEWAY PER DETAIL 2-C5.06
- 22) CONSTRUCT 1" CONCRETE VALLEY GUTTER PER DETAIL 2-C5.01.
- 23) CONSTRUCT CONCRETE STAIRS ON GROUND PER DETAIL 10-C5.01.
- 24) SEE LANDSCAPE PLANS FOR SURFACE/HARDSCAPE FEATURES, DESIGN AND DRAINAGE WITH RIP-RAP AND ROCK FEATURES WITHIN THE LANDSCAPE AREAS AND PATHWAYS.
- 25) CONSTRUCT HANDICAP RAMP PER DETAIL 6-C5.08.
- 26) CONSTRUCT BOLLARDS PER ARCH. DETAILS AND SPECIFICATIONS
- 27) CONSTRUCT PLANTER WALLS AND SEATS PER ARCH. DETAILS AND SPECIFICATIONS
- 28) 8'-6"x10'-0" PEDESTRIAN BRIDGE, SEE DETAIL 2-C5.09.
- 29) 8'-0"x20'-0" PEDESTRIAN BRIDGE, SEE DETAIL 4-C5.09.
- 30) 15'-0"x24'-6" PEDESTRIAN BRIDGE, SEE DETAIL 6-C5.09.

CONSTRUCTION NOTES:

- (CONTINUED)
- 31) CONSTRUCT CONC. MEDIAN IN CURB PER C.C.A.U.S.D. #246.
- 32) CONSTRUCT AC PAVEMENT PER C.C.A.U.S.D. #202.
- 33) CONSTRUCT TACK ON ISLAND CURB PER C.C.A.U.S.D. #220.
- 34) CONSTRUCT SIDEWALK, AMENITY ZONE HARDSCAPES, SCORING PATTERNS AND ENRICHED CORNER PAVING PER "TOWN CENTER AREA" STANDARD DRAWINGS (SEE A-C5.06).

CL. OR SURVEY LINE	EASEMENT LINE	HEAVY AC PWMT.	DESCRIP.:	CONTOUR LINES	EDGE OF PAVEMENT	"A" TYPE CURBS	"L" TYPE CURBS	WALLS	FENCES	AC PAVEMENT	CONCRETE	SPOT ELEVATIONS	SIGNS	MANHOLE W/ DESCRIPTION	MANHOLE DESCRIPTIONS	FIRE HYDRANTS	GATE VALVES	REDUCERS	CLEAN OUTS	UTILITY BOX OR VAULT	100W HPS STREETLIGHTS	150W HPS STREETLIGHTS	200W HPS STREETLIGHTS	250W HPS STREETLIGHTS
84627	SAWCUT LINE	CONCRETE PWMT.	EXIST.: (2210)	---	---	---	---	---	---	---	---	12.34 BC	12.34 BC	① = SANITARY SEWER ② = STORM DRAIN ③ = ELECTRICAL ④ = TELEPHONE	☼	⊙	▶	○	□	○	○	○	○	

I:\cadd\041012\dwg\C-041012-301.dwg, 9/15/2005 2:20:05 PM, 130, Lochsa Civil

DRAWINGS AND SPECIFICATIONS ARE THE PROPERTY OF THE DESIGN PROFESSIONAL. THESE DRAWINGS AND SPECIFICATIONS MAY BE REPRODUCED OR TRANSMITTED IN ANY FORM OR BY ANY MEANS WITHOUT WRITTEN PERMISSION OF THE DESIGN PROFESSIONAL. ANY USE OR REPRODUCTION IN WHOLE OR IN PART WITHOUT WRITTEN CONSENT IS STRICTLY PROHIBITED. COPIES OF THE DRAWINGS AND SPECIFICATIONS REMAINED BY THE CLIENT MAY BE UTILIZED ONLY FOR OCCUPANCY OF THE PROJECT FOR WHICH THEY WERE PREPARED AND NOT FOR THE CONSTRUCTION OF ANY OTHER PROJECT. N.E.C. 027.002