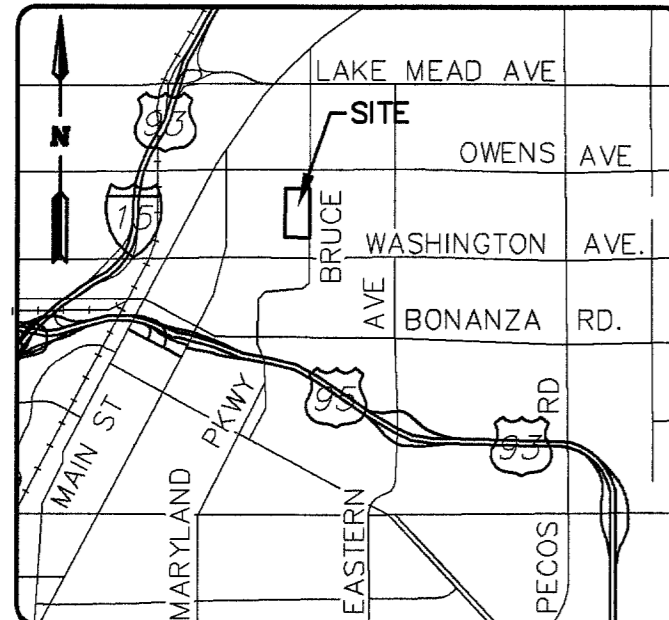


CALL before you Overhead
1-702-227-2929

CALL before you DIG
1-800-227-2600

UNDERGROUND SERVICE (USA)
AVOID OVERHEAD POWER LINE CONTACT. IT'S COSTLY.

UNDERGROUND SERVICE (USA)
AVOID CUTTING UNDERGROUND UTILITY LINES. IT'S COSTLY.



VICINITY MAP
N.T.S.

CONSTRUCTION NOTES

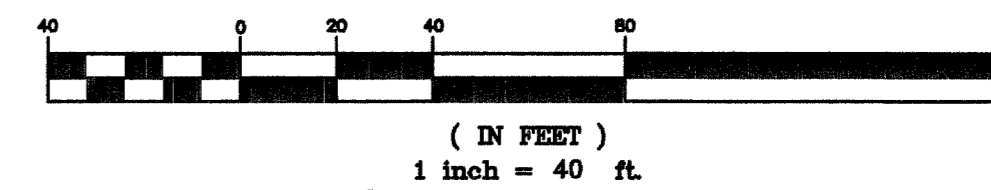
- LOCATION OF UNDERGROUND UTILITIES ON THE DRAWINGS WERE OBTAINED BY A THOROUGH SEARCH OF AVAILABLE RECORDS. THE ENGINEER ASSUMES NO RESPONSIBILITY FOR UTILITIES NOT SHOWN OR IN THE LOCATION SHOWN ON THE DRAWINGS.
- EXISTING WATERLINE PER DWG: JAMES BROOKS MCDANIEL, A.I.A. ARCHITECTS, JOB NO. NEV.2-5, SHT M-1 OF 12, DATED 12-8-81.
- EXISTING WATERLINE PER DWG: YSIDRO R. BARRON, A.I.A. ARCHITECTS, JOB NO. 931201, DWG NO. C1.02 AND C1.01. DATED 9-15-84.
- EXISTING GAS AND WATER UTILITY LINES TO REMAIN. CONTRACTOR RESPONSIBLE FOR ANY DAMAGE.
- INSTALL 48" STANDARD ECCENTRIC MANHOLE SD-1 PER DESIGN AND CONSTRUCTION STANDARDS FOR WASTEWATER COLLECTION SYSTEMS.
- INSTALL NEW 48" SSMH OVER EXISTING 8" SANITARY SEWERLINE AND CUT TOP OFF EXISTING SEWERLINE WITHIN MANHOLE.
- CONTRACTOR TO VERIFY DEPTH AND LOCATION OF EXISTING SANITARY SEWERLINE PRIOR TO CONSTRUCTION. ANY DISCREPANCY TO BE BROUGHT TO THE ATTENTION OF THE ENGINEER PRIOR TO COMMENCEMENT OF CONSTRUCTION.
- ALL SANITARY SEWER IS CONSTRUCTED OF WATER SUPPLY QUALITY MATERIALS AND MEETING AWWA STANDARDS INSTALLED PER 2.19.02.B1 THROUGH B3.
- ALL SEWER/STORM DRAINS CROSSING WATER LINES MUST CONFORM TO SECTION 2.19 OF UNIFORM DESIGN AND CONSTRUCTION STANDARDS FOR WATER DISTRIBUTION SYSTEMS (UDACS) FOR WATER AND STORM MAIN CROSSINGS AND CLEARANCES.

QUANTITIES

	PRIVATE	PUBLIC
6" PVC SEWERLINE	1,641 LF	
48" SS MANHOLE CLEANOUT	4 EA	
	38 EA	

THESE QUANTITIES ARE FOR PLANS CHECKING PURPOSES ONLY AND SHOULD NOT BE USED BY CONTRACTORS TO DETERMINE FINAL QUANTITIES.

GRAPHIC SCALE



EXISTING UTILITY LEGEND

- EXISTING 4" SANITARY SEWER (TO BE ABANDONED)
- EXISTING 2" GAS
- EXISTING 1.5" GAS
- EXISTING 1.5" WATER LINE
- EXISTING 2" WATER LINE
- EXISTING 4" WATER LINE

LEGEND

- EXISTING CONTOURS
- PROPOSED CONTOURS
- PROPOSED GRADE
- EXISTING GRADE
- PROPOSED SANITARY SEWER LINE
- EXISTING SANITARY SEWER LINE
- PROPOSED WATER LINE
- EXISTING WATER LINE
- PROPOSED FIRE SPRINKLER LINE
- EXISTING GAS LINE
- EXIST./PROP. EDGE OF ASPHALT
- PROPERTY/RIGHT-OF-WAY LINE
- CENTERLINE
- EXIST./PROP. BLOCK WALL
- EX. OVERHEAD POWER/TELEPHONE
- SAWCUT LINE
- EXIST./PROP. SANITARY SEWER MANHOLE
- EXIST./PROP. 100W HPS STREETLIGHT
- EXIST./PROP. 150W HPS STREETLIGHT
- EXIST./PROP. 250W HPS STREETLIGHT
- HANDICAPPED SYMBOL
- EXIST./PROP. FIRE HYDRANT
- EXIST./PROP. GATE VALVE
- EXIST./PROP. REDUCING VALVE
- EXIST./PROP. CLEANOUT
- PROPOSED ASPHALT
- PROPOSED CONCRETE

ABBREVIATIONS

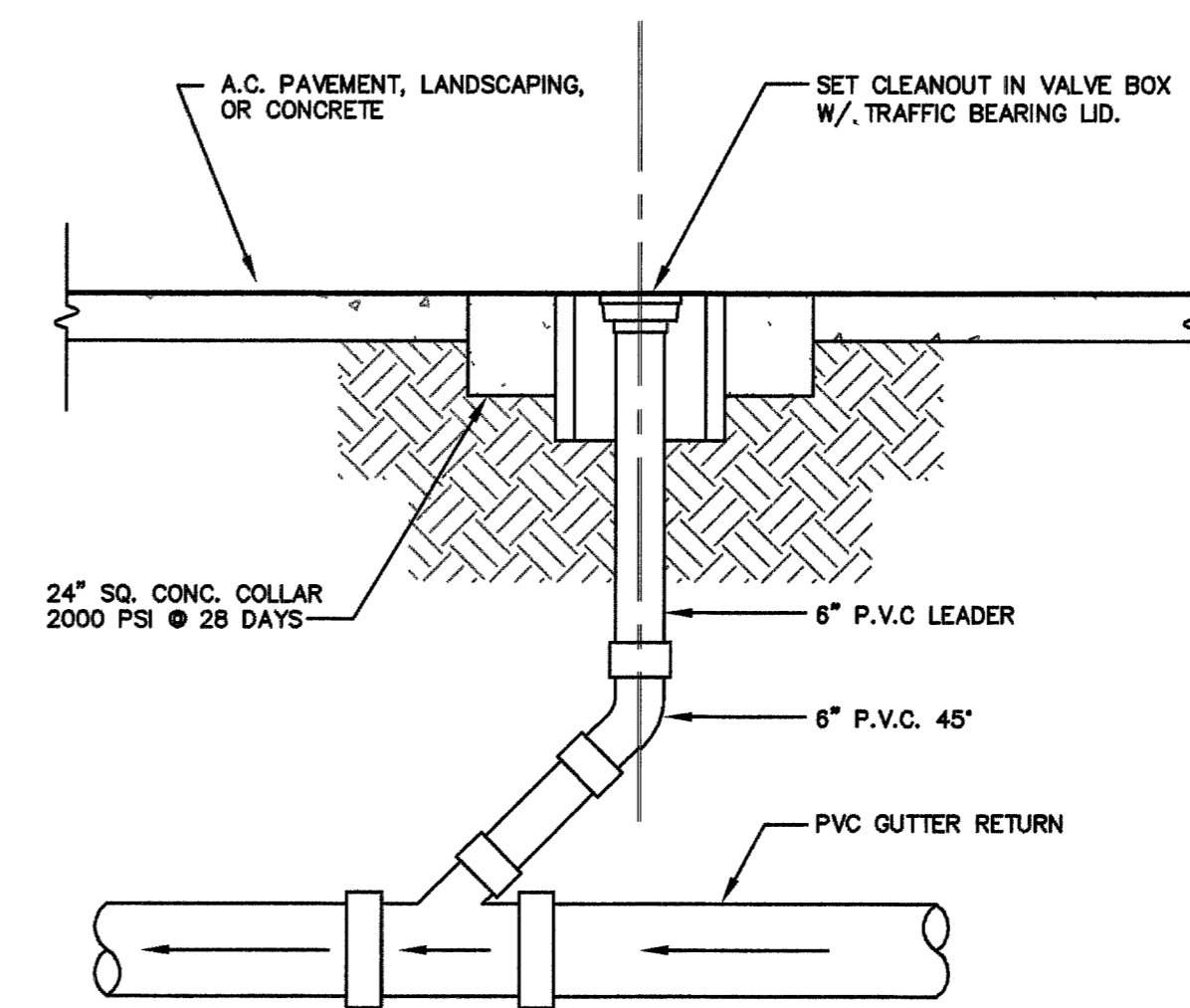
AC.....	ASPHALTIC CONCRETE
BCR.....	BEGINNING OF CURB RETURN
BRW.....	BOTTOM RETAINING WALL
BSW.....	BACK OF SIDEWALK
CC.....	CLARK COUNTY
CLV.....	CITY OF LAS VEGAS
CLV.....	CITY OF NORTH LAS VEGAS
COH.....	CITY OF HENDERSON
CE.....	CENTERLINE
CO.....	SEWER CLEANOUT
CONC.....	CONCRETE
EAC.....	EXISTING ASPHALTIC CONCRETE
EDR.....	END OF CURB RETURN
EP.....	EDGE OF PAVEMENT
ETC.....	EXISTING TOP OF CURB
EX.....	EXISTING
FF.....	FINISHED FLOOR
FL.....	FLOWLINE
GB.....	GRADE BREAK
HP.....	HIGH POINT
IE.....	INVERT ELEVATION
LVWD.....	LAS VEGAS VALLEY WATER DISTRICT
NTS.....	NOT TO SCALE
OH.....	EXISTING OVERHEAD POWER
PE.....	PAD ELEVATION
PL.....	PROPERTY LINE
PP.....	POWER POLE
SD.....	STORM DRAIN LINE
SF.....	SQUARE FEET
SL.....	STREET LIGHT
SS.....	SANITARY SEWERLINE
STA.....	STATION
SW.....	SIDEWALK
TC.....	TOP OF CURB
TR.....	TOP RETAINING WALL
TYP.....	TYPICAL
VG.....	VALLEY GUTTER
WL.....	WATERLINE
WM.....	WATER METER

BENCHMARK

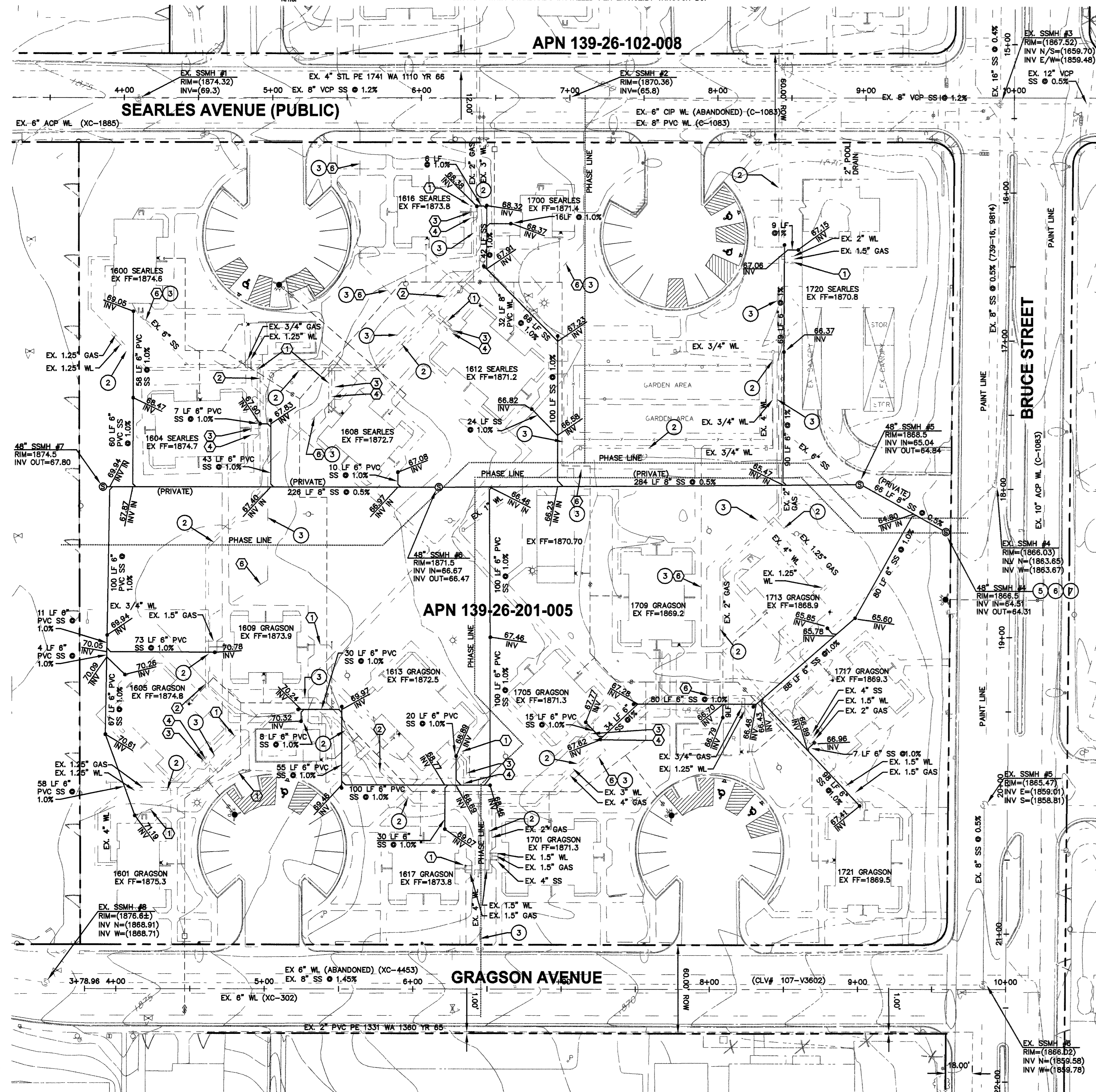
NORTH 89° 56' 34" EAST BEING THE NORTH LINE OF THE NW 1/4 OF SEC 26, TOWNSHIP 20S, RANGE 61 E, M.D.M. AS RECORDED IN FILE 42 PAGE 38 OF RECORD OF SURVEYS

BASIS OF BEARINGS

CLV NO. 2LVO1 26N6, RIVET & PLATE IN TOP OF CURB @ NE CORNER OF BRUCE & SEARLES. ELEV. 1866.33 (88 NAVD)



CLEANOUT DETAIL
NTS



83931

BY _____
DATE _____
REV _____

LUCCHESI GALATI ARCHITECTS

PROJECT DEVELOPER
500 Pecos Road, Suite 110
Las Vegas, NV 89119
(702) 263-9111

4130 S. SANDHILL, SUITE A-16
LAS VEGAS, NV 89121
PH: (702) 597-2988
FAX: (702) 597-0309

TITLE: ARCHIE GRANT PARK MODERNIZATION
LAS VEGAS HOUSING AUTHORITY

DRAWN BY: _____
DESIGNED BY: _____
CHECKED BY: _____
PROJECT NO: _____
FILE NAME: _____
170.8

SCALE
HORIZONTAL: 1"=40'
VERTICAL: N/A

SHEET
C4
4 OF 4 SHEETS
CLV DWG#
107V4466