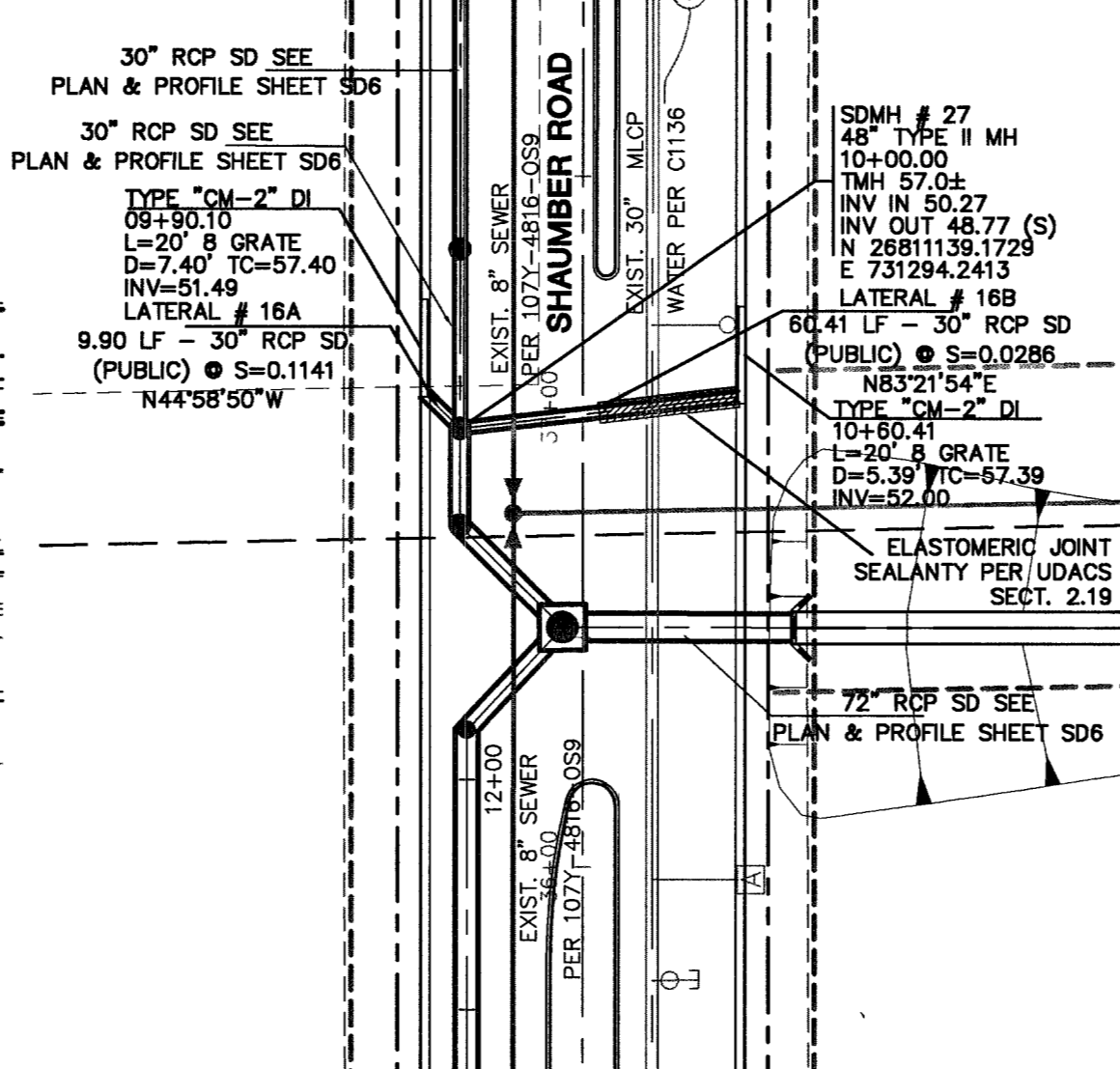
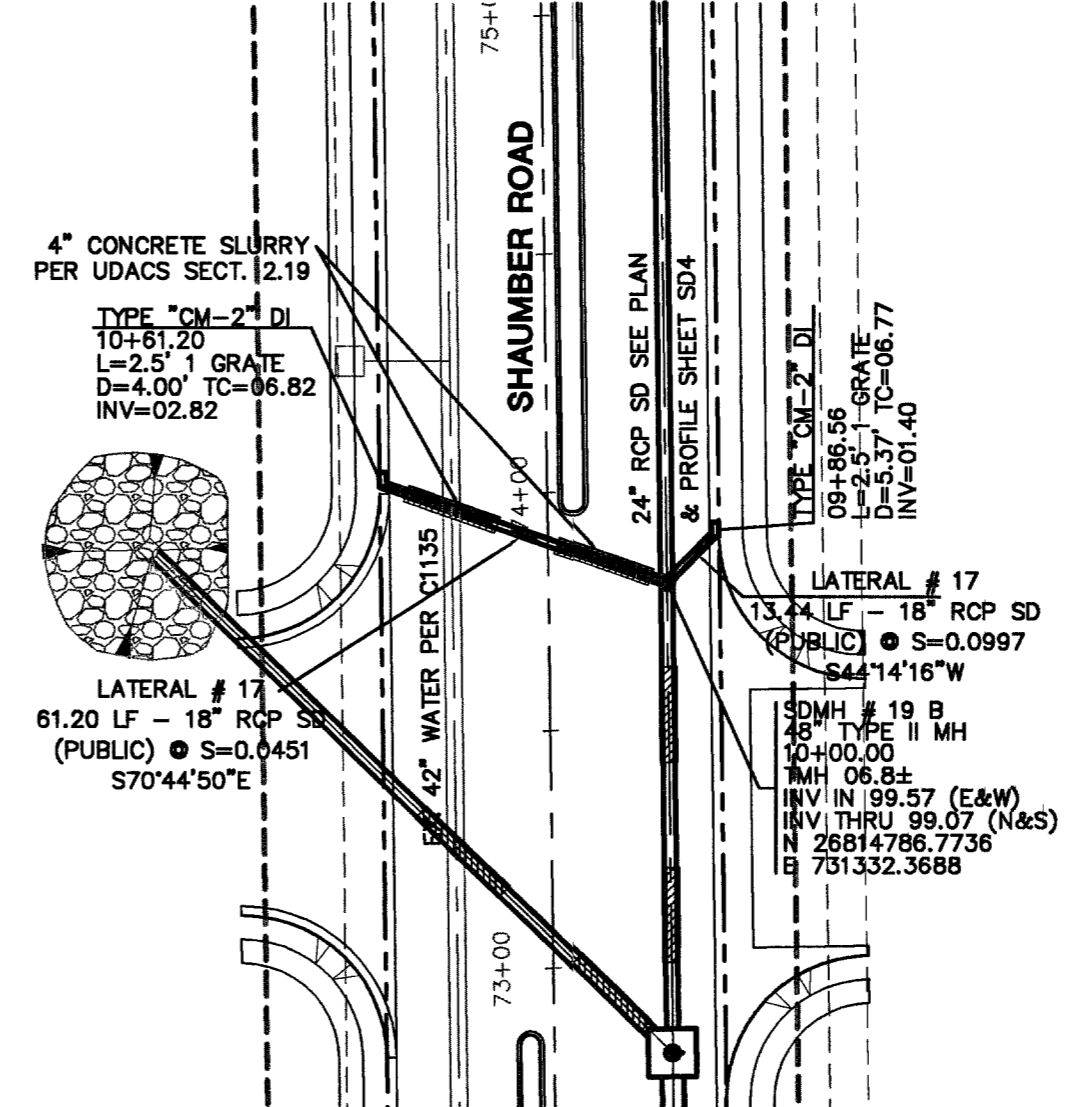


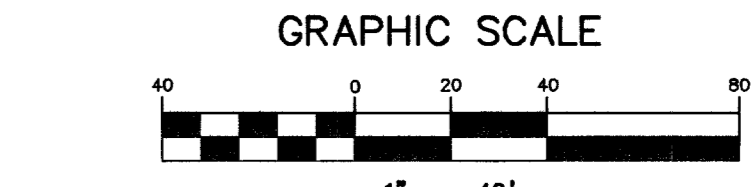
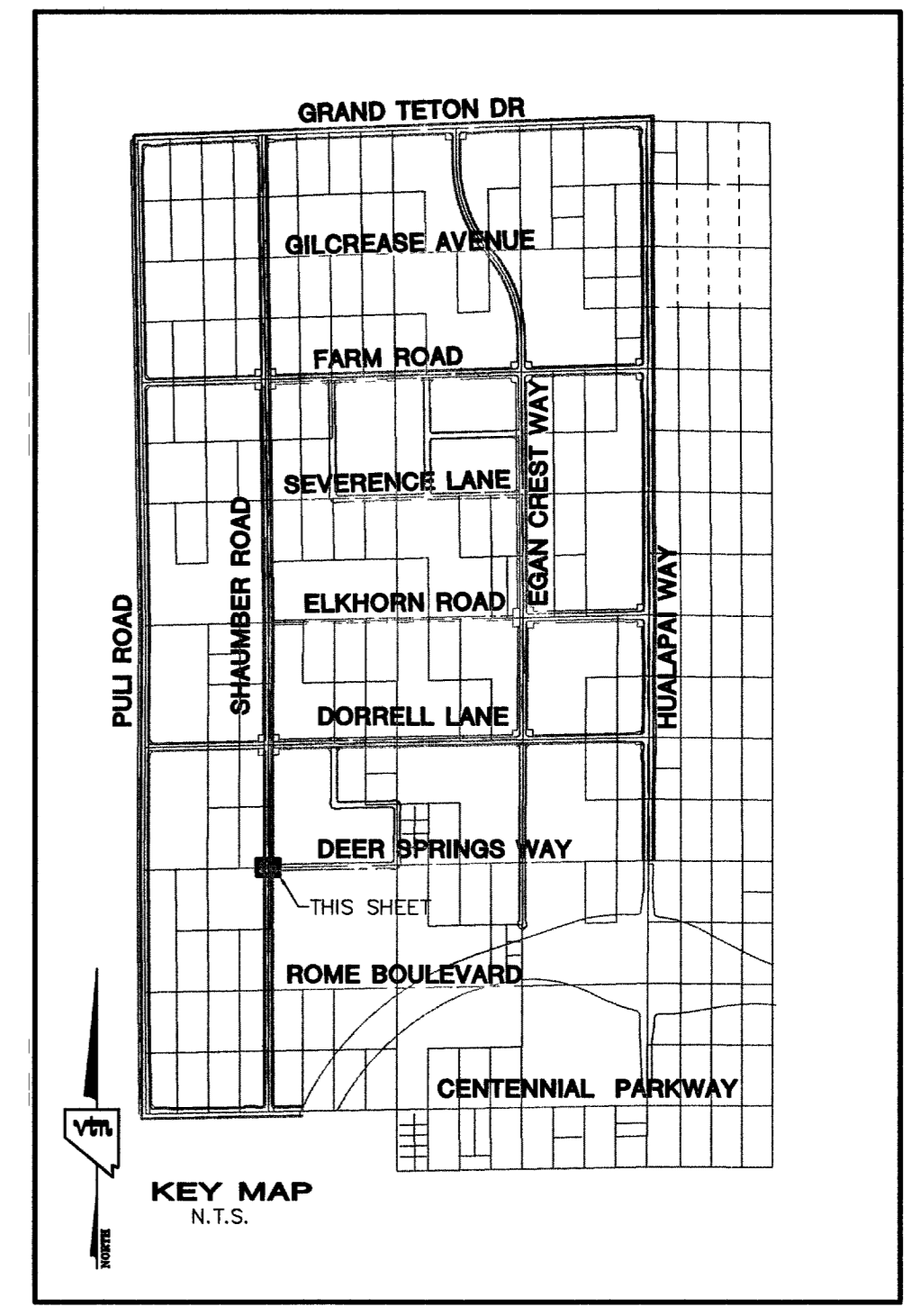
LATERAL # 15
SEE SD6



LATERAL # 16
SEE SD6



LATERAL # 17
SEE SD4



CONTRACTOR NOTE:
CONTRACTOR SHALL VERIFY HORIZONTAL AND VERTICAL LOCATION OF EXISTING UTILITIES AND NOTIFY THE DESIGN ENGINEER IMMEDIATELY OF ANY DISCREPANCIES PRIOR TO CONSTRUCTION.

Call before you Underground
1-702-455-7511
CLARK COUNTY TRAFFIC OPERATIONS
AND
1-702-229-6611
FREEWAY AND ARTERIAL SYSTEM OF TRANSPORTATION

Call before you Overhead
1-702-227-2929

Call before you Dig
1-800-227-2600

BASIS OF BEARINGS
THE BASIS OF BEARINGS FOR THIS PROJECT IS NORTH 00°08'16" EAST BEING THE EAST LINE OF THE NORTHWEST QUARTER (NE 1/4) OF THE SECTION 24, TOWNSHIP 19 SOUTH, RANGE 59 EAST, M.D.M., CLARK COUNTY, NEVADA, AS SHOWN ON A RECORD OF SURVEY ON FILE IN THE CLARK COUNTY, NEVADA, RECORDER'S OFFICE IN FILE 123 AT PAGE 32.

PROJECT BENCHMARK
PROJECT DATUM: NORTH AMERICAN VERTICAL DATUM OF 1988 (NAVD88)
CLARK COUNTY VERTICAL CONTROL: 1000-6N6
NAVD88 ELEVATION: 787.794 METERS (2584.62 FEET)

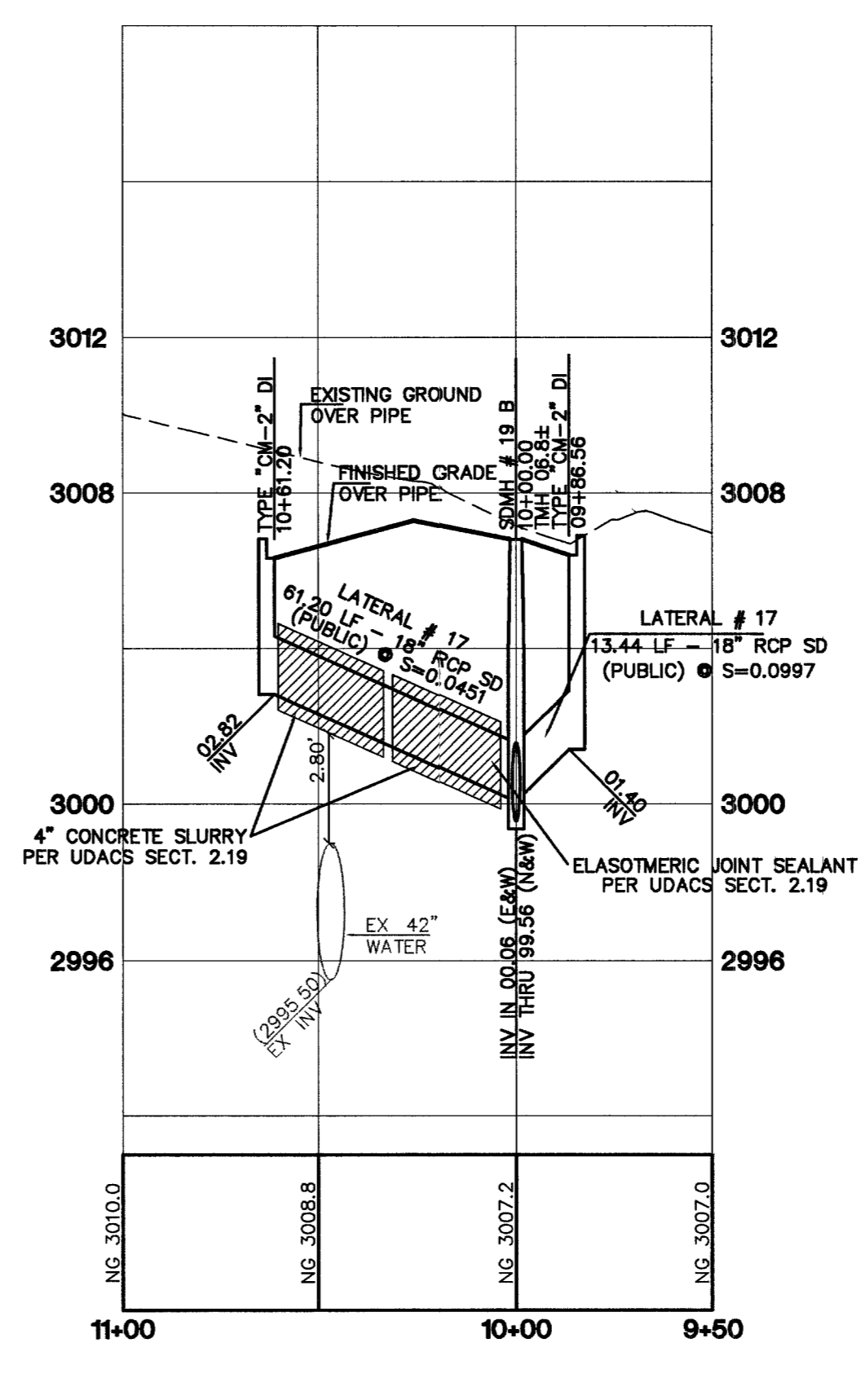
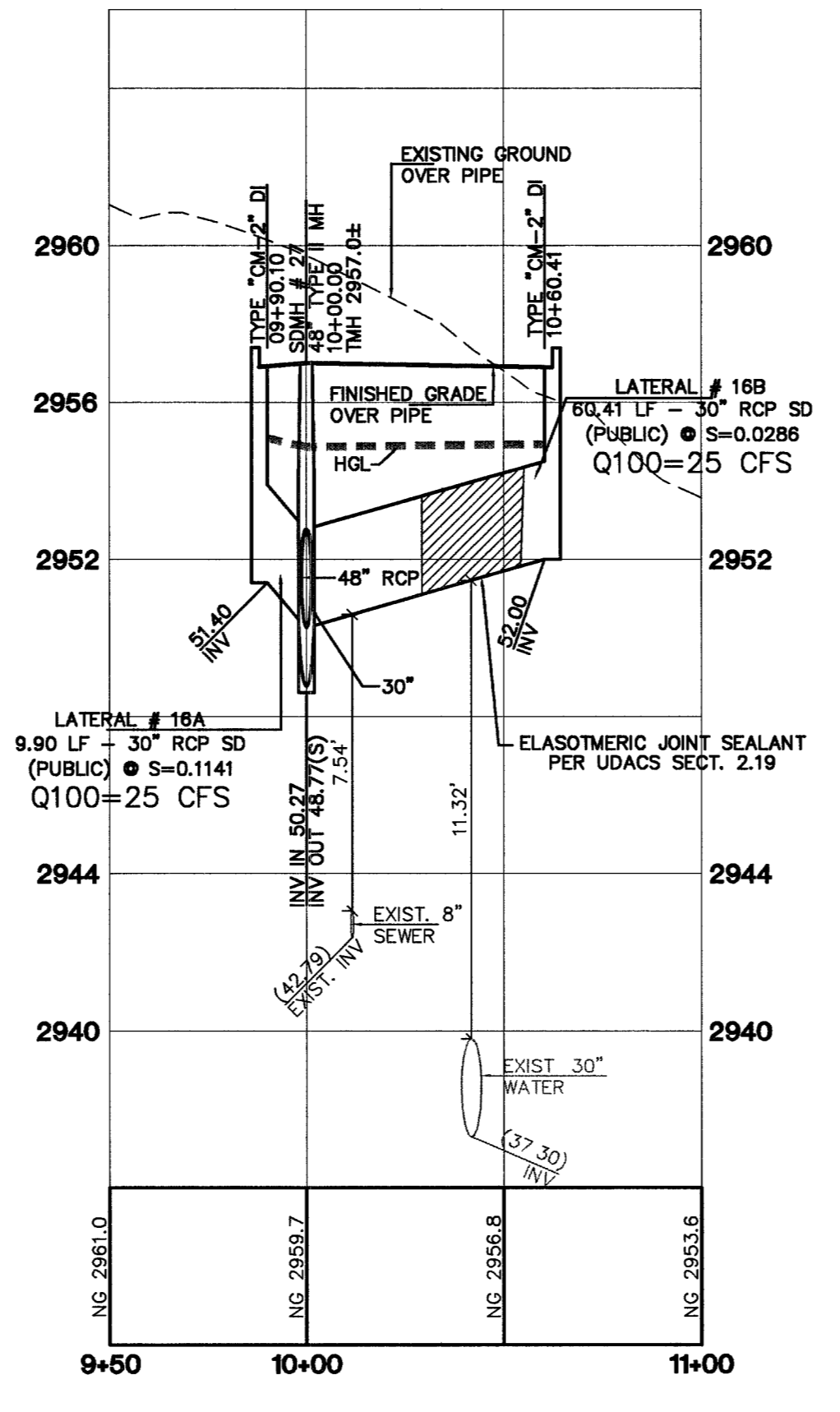
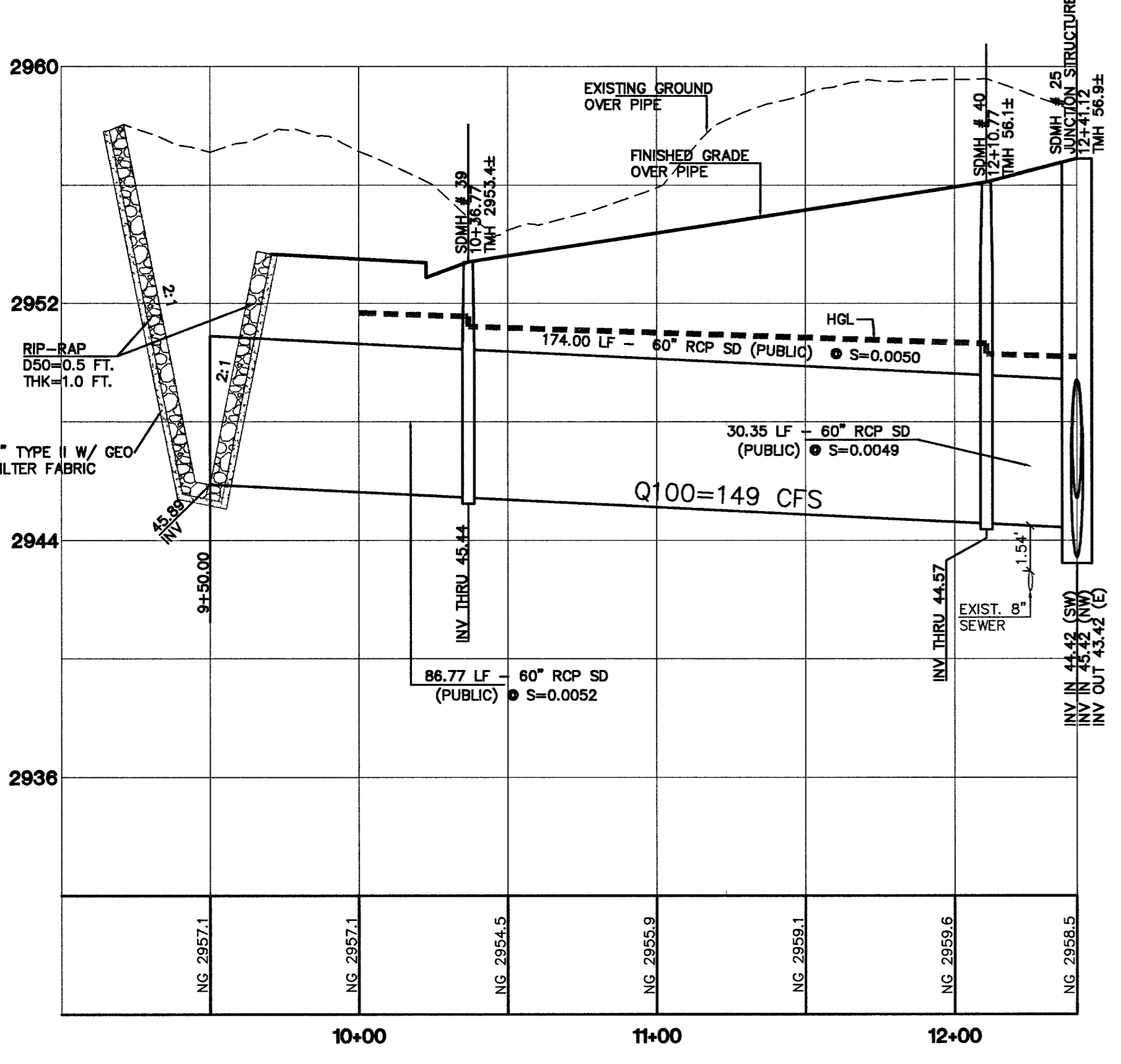
RIVET AND SQUARE ALUMINUM PLATE, IN A CONCRETE CYLINDER, LOCATED 2' SOUTH & 5' EAST OF GRAND CANYON DRIVE AND RED COACH AVENUE, 1' WEST OF ELECTRICAL VAULT.

CITY OF LAS VEGAS BENCHMARK
DATUM: NORTH AMERICAN VERTICAL DATUM OF 1988 (NAVD88)
CITY OF LAS VEGAS BENCHMARK: 8LV99-13SES
NAVD88 ELEVATION: 869.606 METERS (2853.03 FEET)

RIVET AND PLATE IN CONCRETE CYLINDER NW CORNER OF HUALAPAI AND ELKHORN

NOTE: ADD 0.34' TO ABOVE CITY OF LAS VEGAS BENCHMARK 8LV99-13SES TO MATCH ORIGINAL PROJECT BENCHMARK, CLARK COUNTY BENCHMARK 1000-6N6 (2584.62 FEET) AS SHOWN ON RECORD OF SURVEY FILE 124 PAGE 94.

I CERTIFY THAT THIS PLAN IS IN CONFORMANCE WITH THE APPROVED DRAINAGE STUDY ON FILE AT CITY OF LAS VEGAS FOR THIS PROJECT. DS3617
DANIEL J. HOOD No. 12811 DATE 7-21-09



7	6	5	4	3	2	1	REV	DATE	BY
CLIFFS EDGE LLC 3455 CLIFF SHADOWS PARKWAY, SUITE 280 LAS VEGAS, NEVADA 89129 (702) 777-1221									
CITY OF LAS VEGAS, NEVADA									
2727 SOUTH RAINBOW BOULEVARD LAS VEGAS, NEVADA 89146-5148 PH. (702) 873-7550 FAX (702) 362-2597									
VTM nevada CONSULTING ENGINEERS • PLANNERS • LAND SURVEYORS									
STORM DRAIN PLAN & PROFILE SHAUMBER ROAD LATERAL # 15 THRU LATERAL # 17									
CLIFFS EDGE / PROVIDENCE SHAUMBER ROAD CENTENNIAL TO GRAND TETON									
DRAWN BY:	ROM	JULY, '04							
DESIGNED BY:	N-HALL	JULY, '04							
CHECKED BY:	J.M.	JULY, '04							
PROJECT NO.:	5869								
SCALE:									
EXPIRES 06-30-07									
SHEET SD15 30 OF 44 SHEETS DRAWING NO. 10744816-SHD									