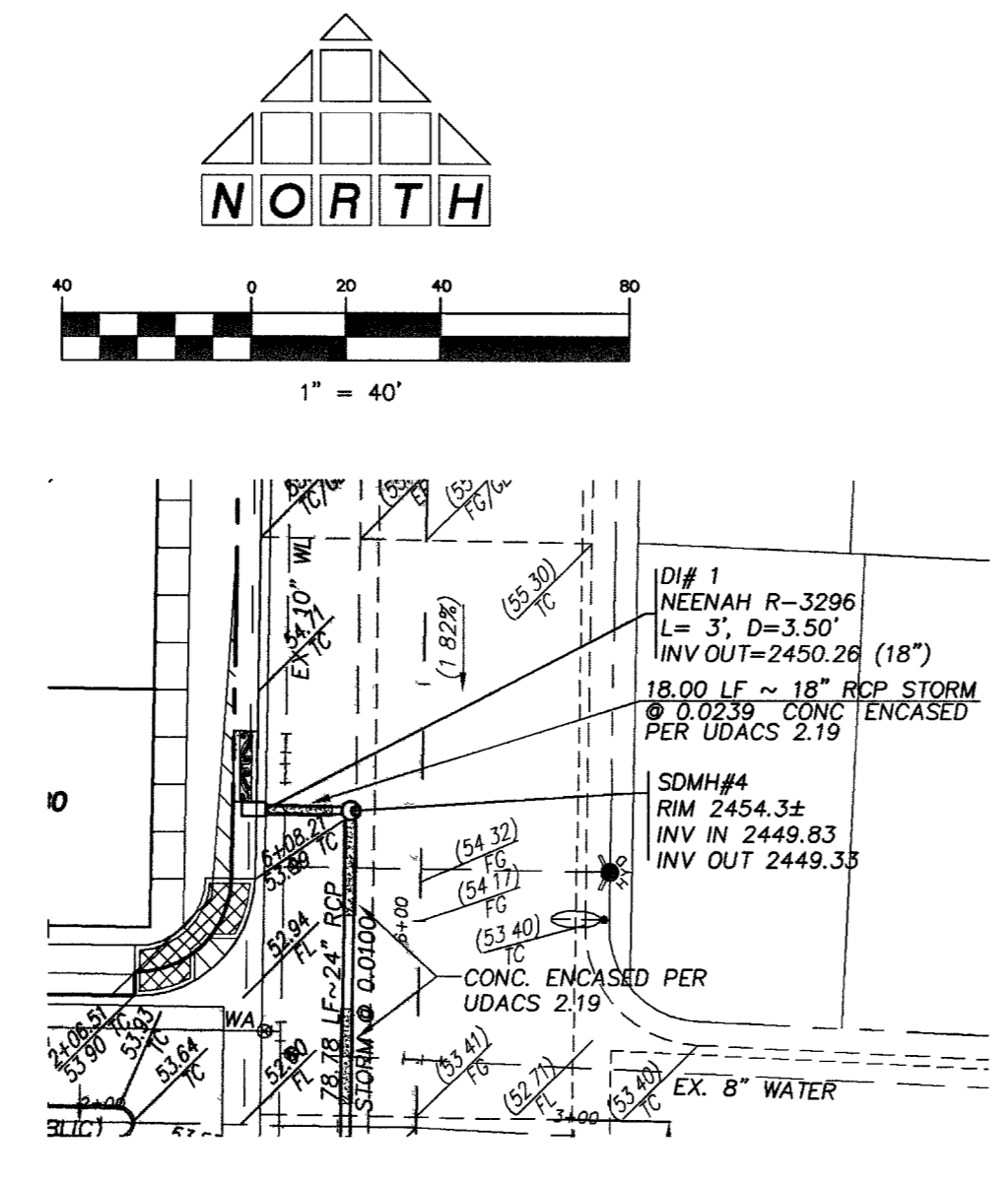
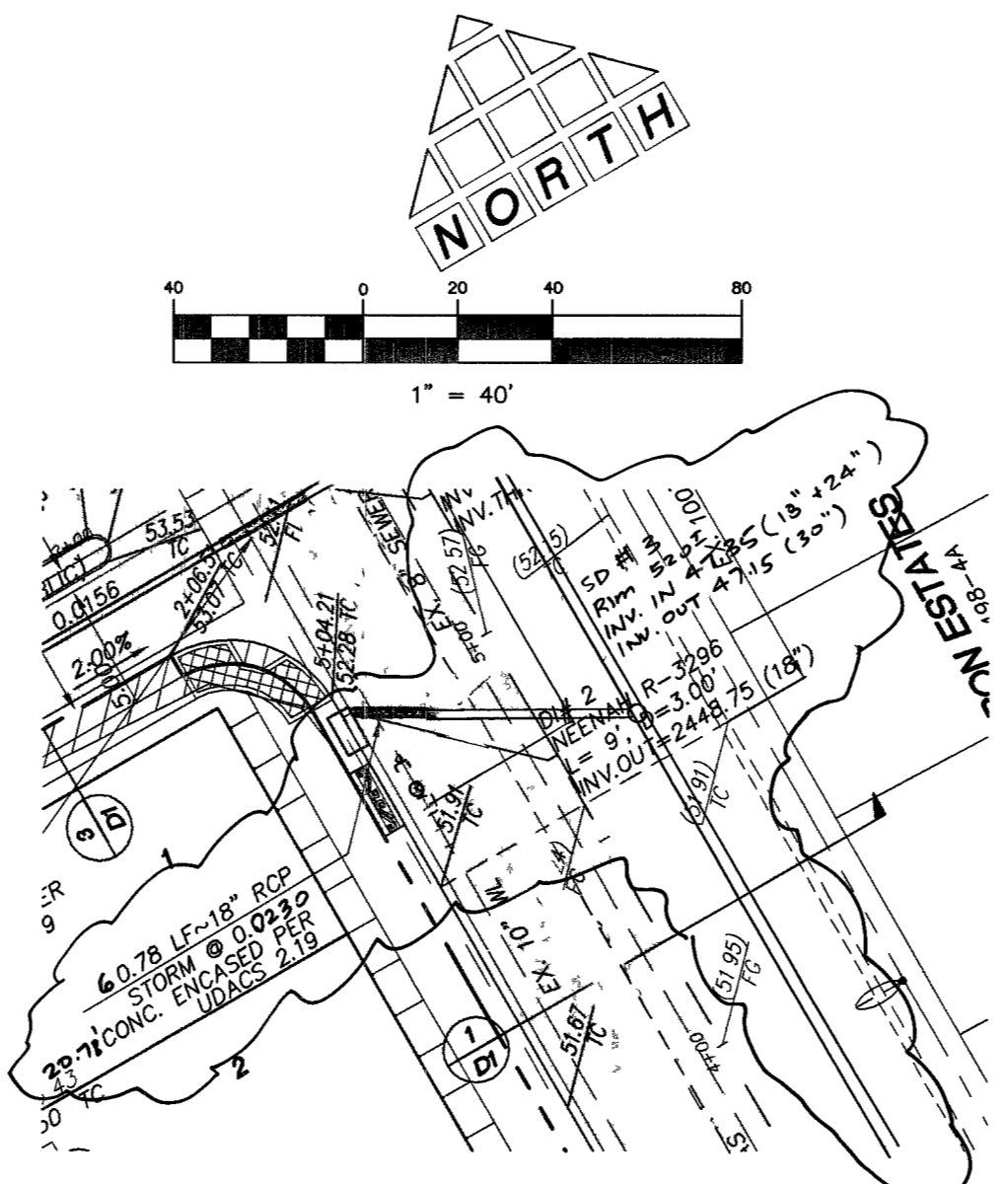


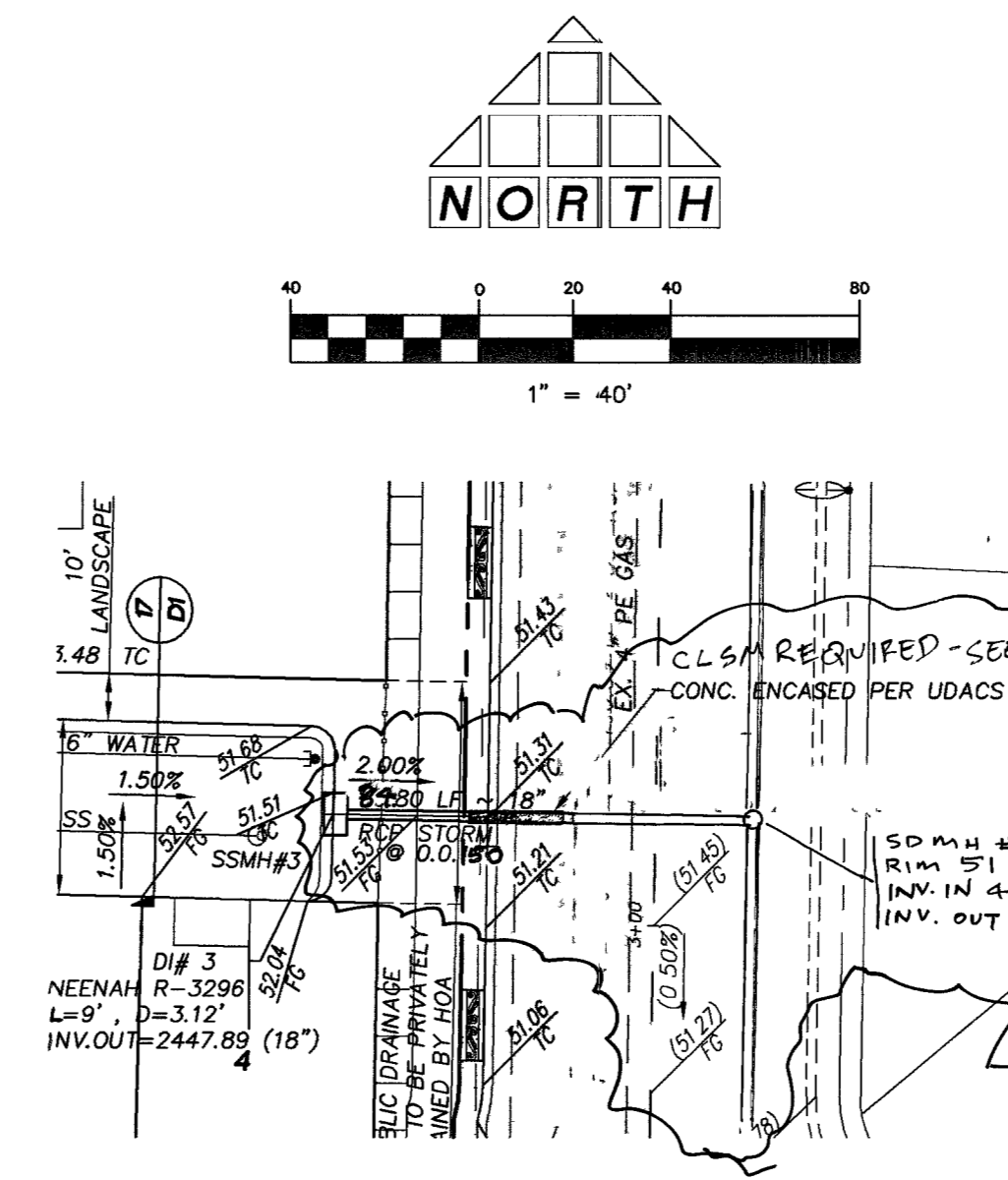
STORM DRAIN LATERAL (PUBLIC)



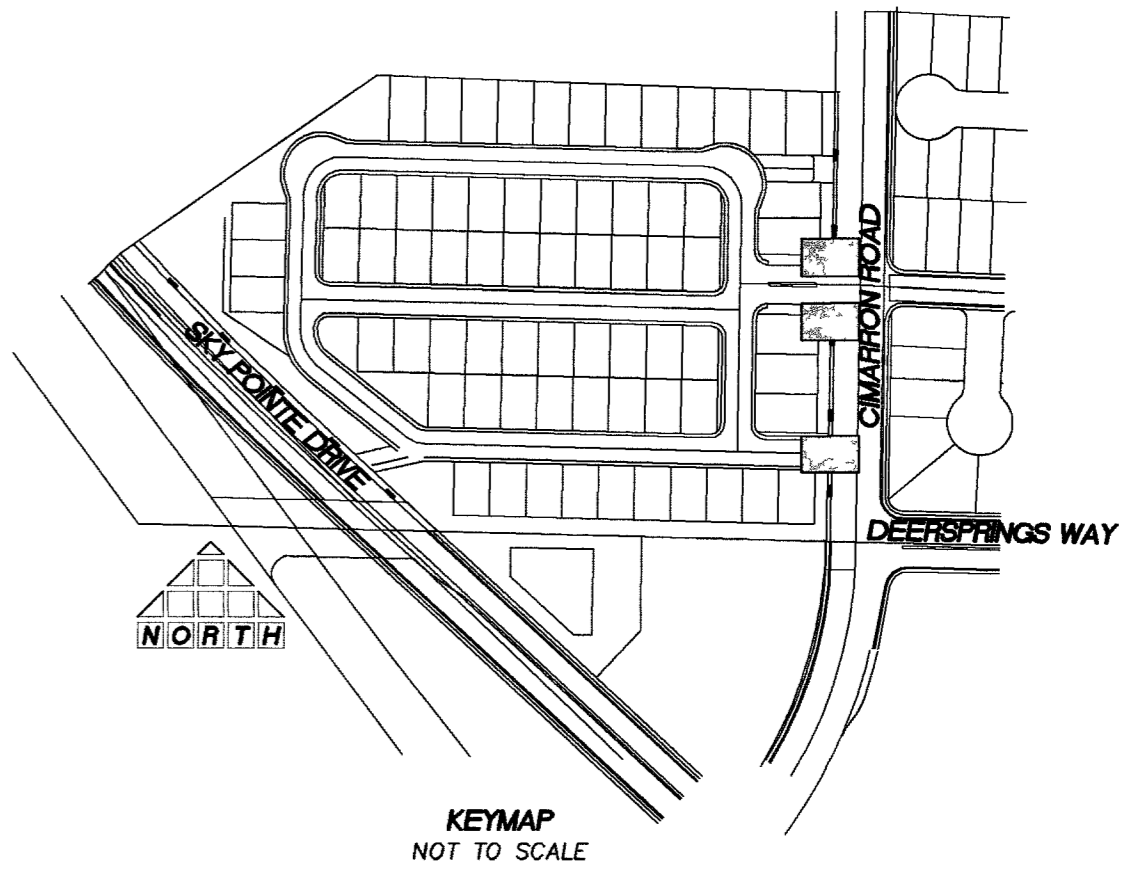
STORM DRAIN LATERAL (PUBLIC)



STORM DRAIN LATERAL (PUBLIC)

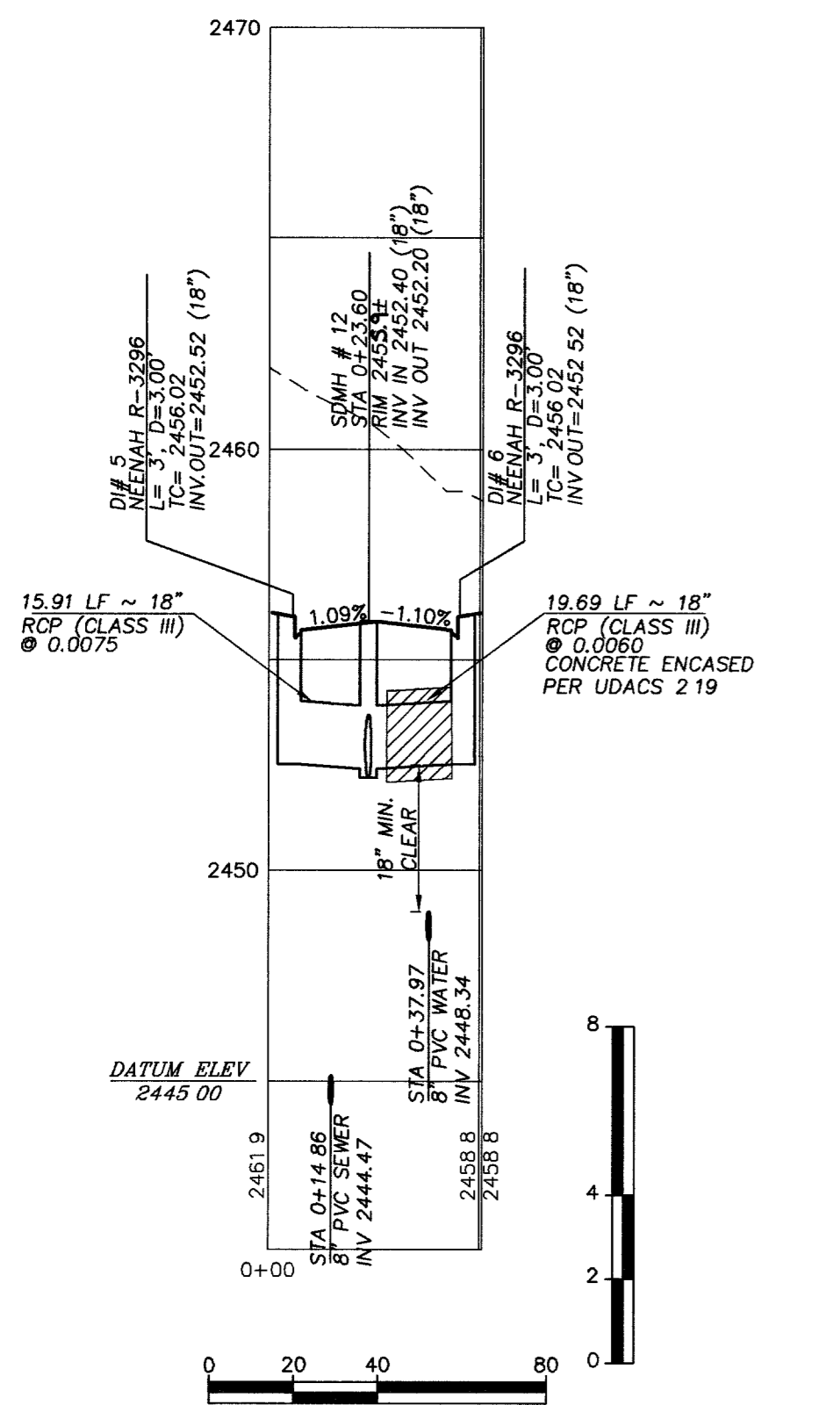


STORM DRAIN LATERAL (PUBLIC)

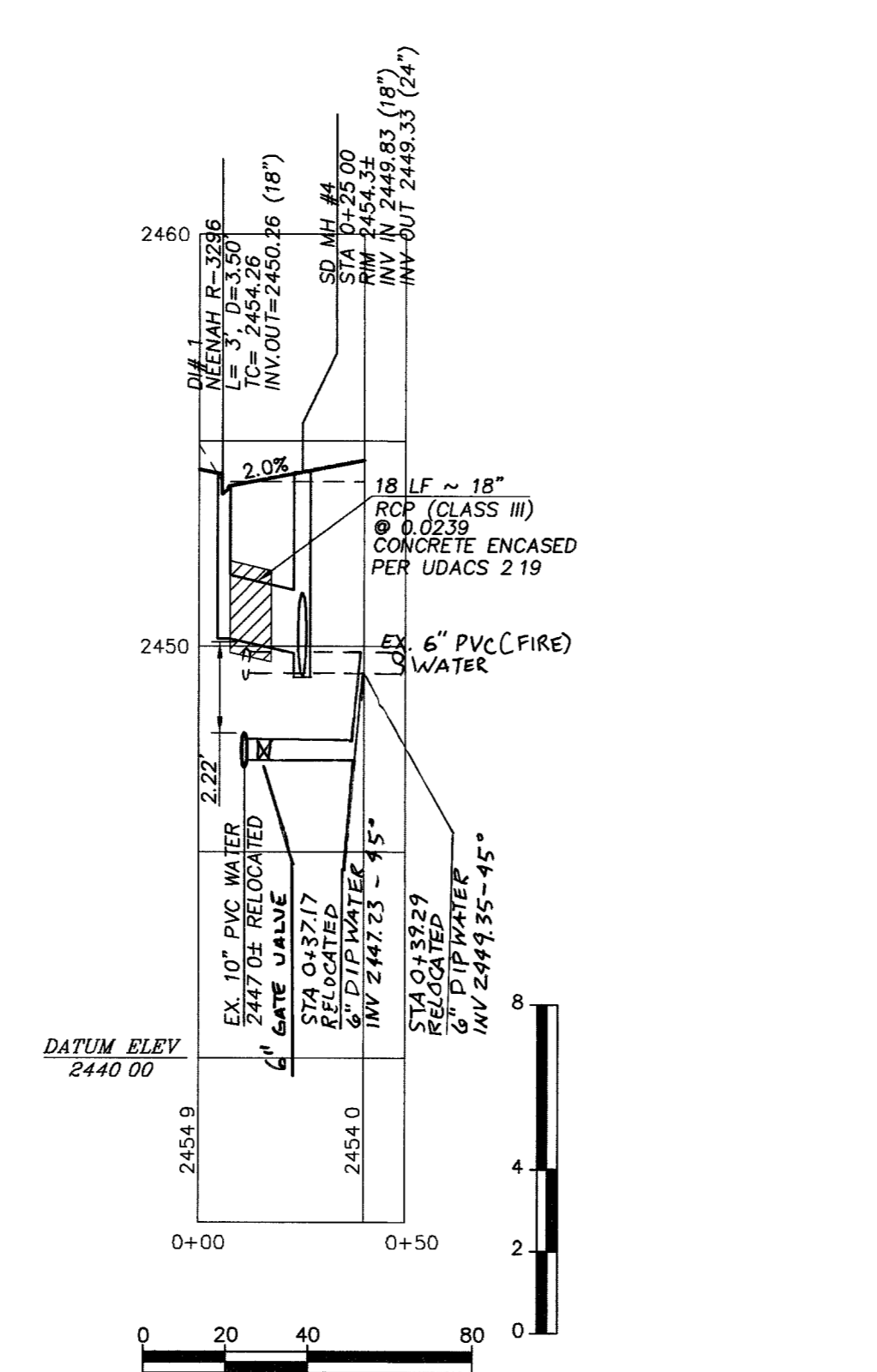


LEGEND

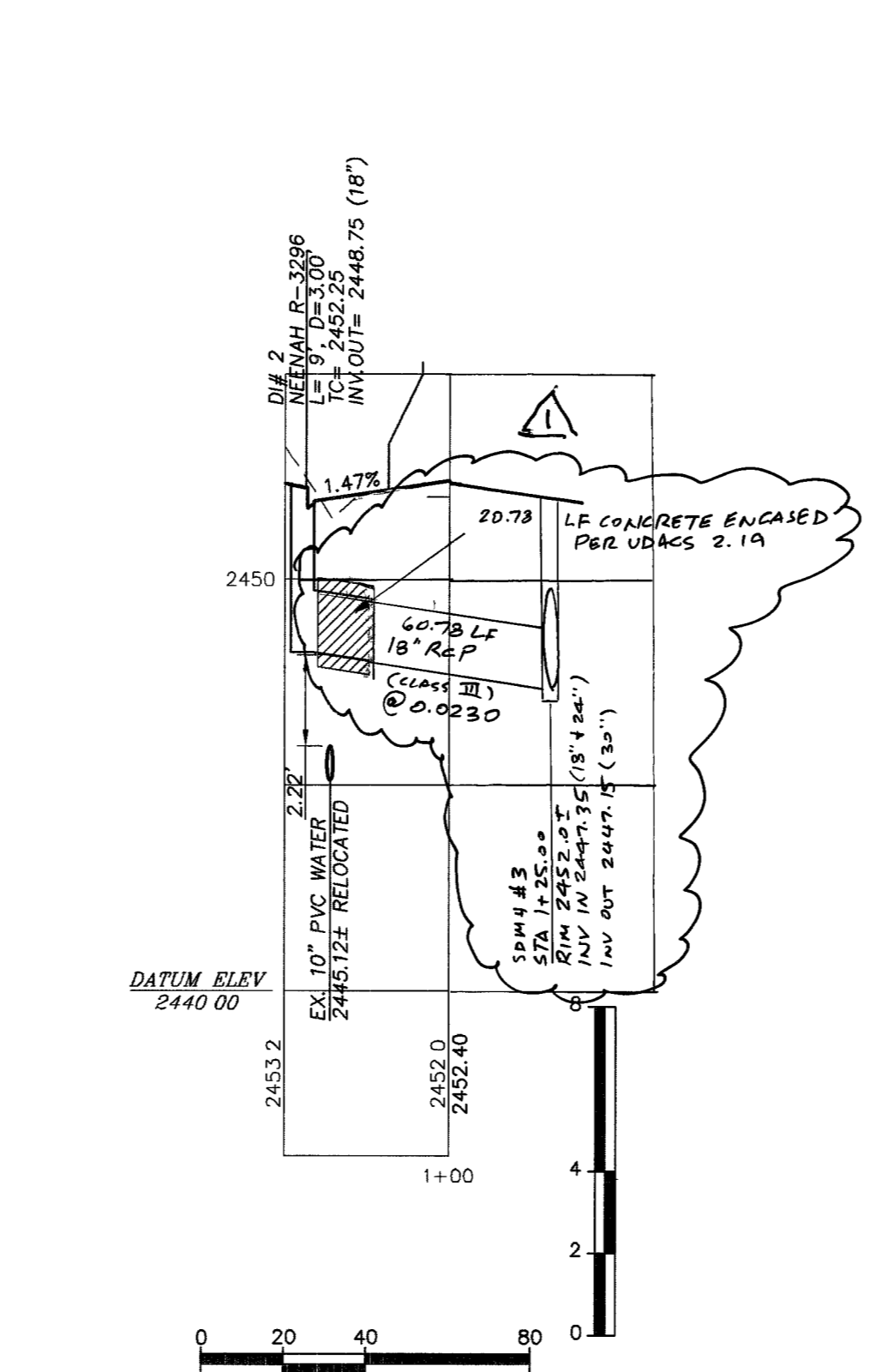
- PROPERTY LINE / RIGHT-OF-WAY
- "L" TYPE CURB AND GUTTER
- "A" TYPE CURB
- EXISTING CURB AND GUTTER
- PROPOSED WATER LINE (SIZE AS SHOWN)
- PROPOSED SEWER LINE (SIZE AS SHOWN)
- EXISTING UTILITY (AS SHOWN)
- CROSS GUTTER
- WHEELCHAIR RAMP
- CUT OR FILL SLOPE
- PROPOSED PAVEMENT AREA
- PROPOSED ELEVATION (DESCRIPTION AS SHOWN)
- EXISTING ELEVATION (DESCRIPTION AS SHOWN)
- FUTURE DESIGN ELEVATION (DESCRIPTION AS SHOWN)
- LOT NUMBER
- PAD ELEVATION
- FF = 96.3 FINISHED FLOOR ELEVATION
- EXISTING PAVEMENT TO BE REMOVED AND REPLACED
- PHASE LINE
- SIGHT VISIBILITY RESTRICTION ZONES PER STD. DWG. 201.1 (NOTHING OVER 24" IN HEIGHT ALLOWED IN SVZ EXCEPT TRAFFIC CONTROL DEVICES)
- 6' SCREEN WALL
- STEM WALL
- RETAINING WALL



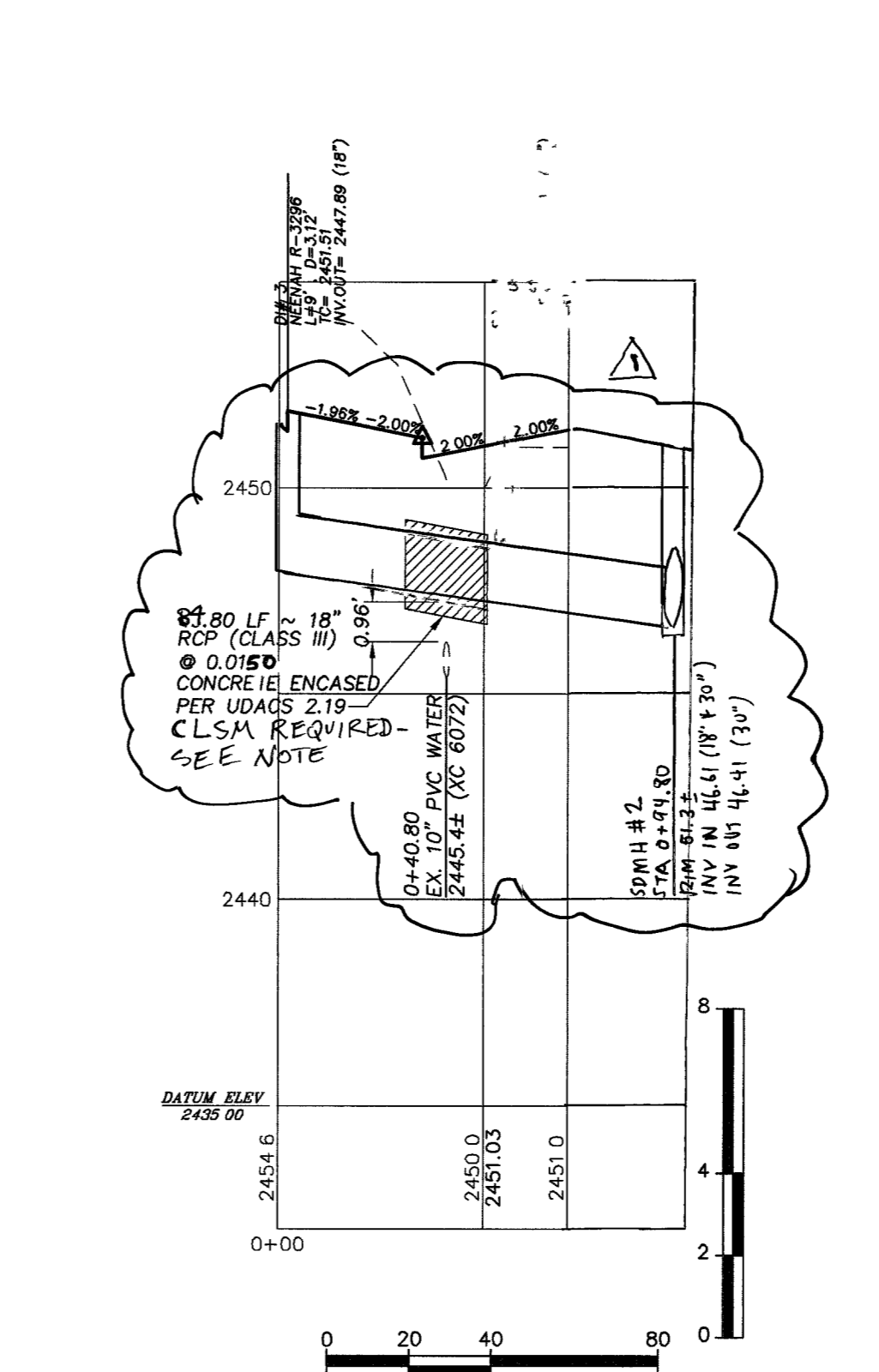
STORM DRAIN LATERAL (PUBLIC)



STORM DRAIN LATERAL (PUBLIC)



STORM DRAIN LATERAL (PUBLIC)



STORM DRAIN LATERAL (PUBLIC)

CONTROLLED LOW STRENGTH MATERIAL (CLSM)
 Protect waterlines in place. Wherever a waterline is above a storm drain or sewer where compaction requirements under a waterline cannot be met, backfill trench with Class I / Class II controlled low strength material (CLSM) to the springline of the waterline. This requirement is for structural support only. Additional health regulations may apply per UDACS 2.19 ESN042.

79153

Avoid cutting underground utility lines. It's costly.
Call before you dig
 1-800-227-2600
 UNDERGROUND SERVICE ORGANIZATION

Avoid overhead power line contact.
Call before you Overhead
 1-702-593-6111
 NEVADA POWER ENVIRONMENT SAFETY SERVICE DEPARTMENT

BENCHMARK
 CITY OF LAS VEGAS VERTICAL CONTROL POINT "BLV90 21C4", BEING A RIVET AND ALUMINUM PLATE IN THE TOP OF CURB AT THE NORTHEAST CORNER OF DEER SPRINGS AND CIMARRON.
 ELEVATION: 2450.82 (FEET)
 747 0101 (METERS)
 CITY OF LAS VEGAS VERTICAL CONTROL v.2002 BASED ON NORTH AMERICAN VERTICAL DATUM OF 1988 (NAVD 88)

BASIS OF BEARING
 THE BASIS OF BEARINGS FOR THIS SURVEY IS NORTH 00°56'30" EAST, BEING THE EAST LINE OF THE NORTHWEST QUARTER (NW 1/4) OF SECTION 21, TOWNSHIP 19 SOUTH, RANGE 60 EAST, M.D.M., CITY OF LAS VEGAS, CLARK COUNTY, NEVADA AS SHOWN IN FILE 119 OF SURVEYS AT PAGE 02, OFFICIAL RECORDS, CLARK COUNTY, NEVADA

ALL SEWER/STORM DRAIN CROSSING WATER LINES MUST CONFORM TO SECTION 2.19 OF THE UNIFORM DESIGN AND CONSTRUCTION STANDARDS FOR POTABLE WATER SYSTEMS (UDACS) FOR WATER AND STORM MAIN CROSSINGS AND CLEARANCES. ESN.064

APPROVED FOR CONSTRUCTION
 [Signature]
 LAS VEGAS VALLEY WATER DISTRICT PROJECT # H109786 DATE 4/6/05

THOMSON CONSULTING ENGINEERS
 3161 E. WARM SPRINGS ROAD, SUITE 200
 LAS VEGAS, NEVADA 89120
 702-932-6125

RICHMOND AMERICAN HOMES
 CIMARRON / US-95
 PLAN AND PROFILE
 STORM DRAIN LATERALS

001.04016
 SCALE 1" = 40'
 1" = 4'

APPROVED FOR CONSTRUCTION
 P3
 11 OF 23
 10744865