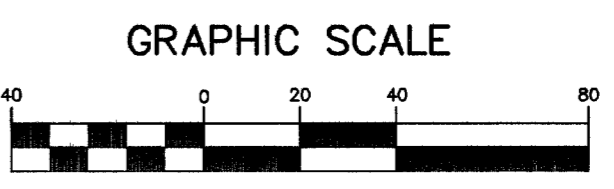


CONTRACTOR NOTE
 CONTRACTOR SHALL VERIFY HORIZONTAL AND VERTICAL LOCATION OF EXISTING UTILITIES AND NOTIFY THE DESIGN ENGINEER IMMEDIATELY OF ANY DISCREPANCIES PRIOR TO CONSTRUCTION.



Call before you Dig
 1-702-455-7511
 CLARK COUNTY TRAFFIC OPERATIONS AND 1-702-229-6611
 LAS VEGAS AREA COMPUTERIZED TRAFFIC SYSTEM

Call before you Dig
 1-800-227-2600

Call before you Overhead
 1-702-227-2929

BASIS OF BEARINGS
 THE BASIS OF BEARINGS FOR THIS PROJECT IS NORTH 00°08'16" EAST BEING THE EAST LINE OF THE NORTHWEST QUARTER (NE 1/4) OF THE SECTION 24, TOWNSHIP 19 SOUTH, RANGE 59 EAST, M.D.M., CLARK COUNTY, NEVADA, AS SHOWN ON A RECORD OF SURVEY ON FILE IN THE CLARK COUNTY, NEVADA, RECORDER'S OFFICE IN FILE 123 AT PAGE 32.

PROJECT BENCHMARK
 PROJECT DATUM: NORTH AMERICAN VERTICAL DATUM OF 1988 (NAVD88)
 CLARK COUNTY VERTICAL CONTROL: 1000-6N6
 NAVD88 ELEVATION: 787.794 METERS (2584.62 FEET)

RIVET AND SQUARE ALUMINUM PLATE IN A CONCRETE CYLINDER, LOCATED 25' SOUTH & 50' EAST OF GRAND CANYON DRIVE AND RED COACH AVENUE, 1' WEST OF ELECTRICAL VAULT.

CITY OF LAS VEGAS BENCHMARK
 DATUM: NORTH AMERICAN VERTICAL DATUM OF 1988 (NAVD88)
 CITY OF LAS VEGAS BENCHMARK: BLV99:13SES
 NAVD88 ELEVATION: 869.606 METERS (2853.03 FEET)

RIVET AND PLATE IN CONCRETE CYLINDER NW CORNER OF HUALAPAI AND ELKHORN

NOTE: ADD 0.34' TO ABOVE CITY OF LAS VEGAS BENCHMARK BLV99:13SES TO MATCH ORIGINAL PROJECT BENCHMARK, CLARK COUNTY BENCHMARK 1000-6N6 (2584.62 FEET) AS SHOWN ON RECORD OF SURVEY FILE 124 PAGE 94.

7					
6					
5					
4					
3					
2					
1					

CLIFFS EDGE LLC
 3455 CLIFF SHADOWS PARKWAY, SUITE 280
 LAS VEGAS, NEVADA 89128
 (702) 777-1121

CITY OF LAS VEGAS, NEVADA
 2727 SOUTH RAINBOW BOULEVARD LAS VEGAS, NEVADA 89146-5148
 PH. (702) 873-7550 FAX (702) 362-2597
 (702) 777-1121

SEWER PLAN AND PROFILE
GRAND TETON DRIVE
STA 47+50.00 TO 57+00.00

CLIFFS EDGE
GRAND TETON DRIVE
SEWER IMPROVEMENTS

DRAWN BY: S.P. APRIL '04
 DESIGNED BY: B.F. APRIL '04
 CHECKED BY: L.M. APRIL '04
 PROJECT NO: 5889
 SCALE: 1"=40' HORIZ.
 1"=4' VERT.

EXPIRES 06-30-07

PROFESSIONAL ENGINEER STATE OF NEVADA
 DANIEL J. HORN
 CIVIL
 NO. 12811
 1-18-05

SHEET
SS5
 8 OF 13 SHEETS
 DRAWING NO.
 10744816-05-8

1:5889 GRAND TETON SEWER 5889SSPP-GRANDTETON.DWG