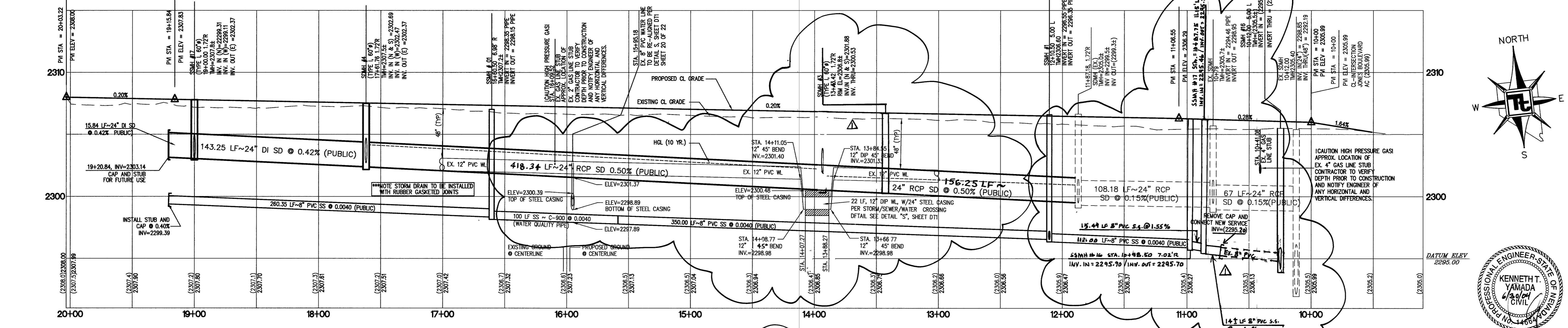
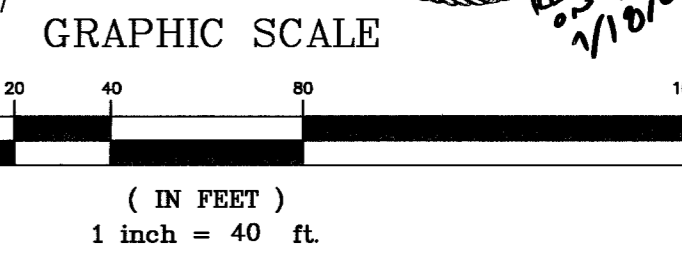
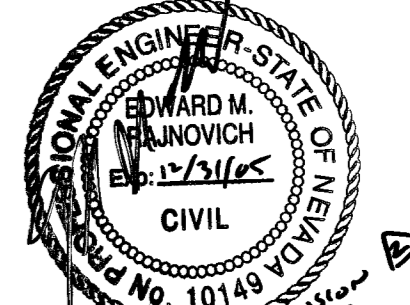
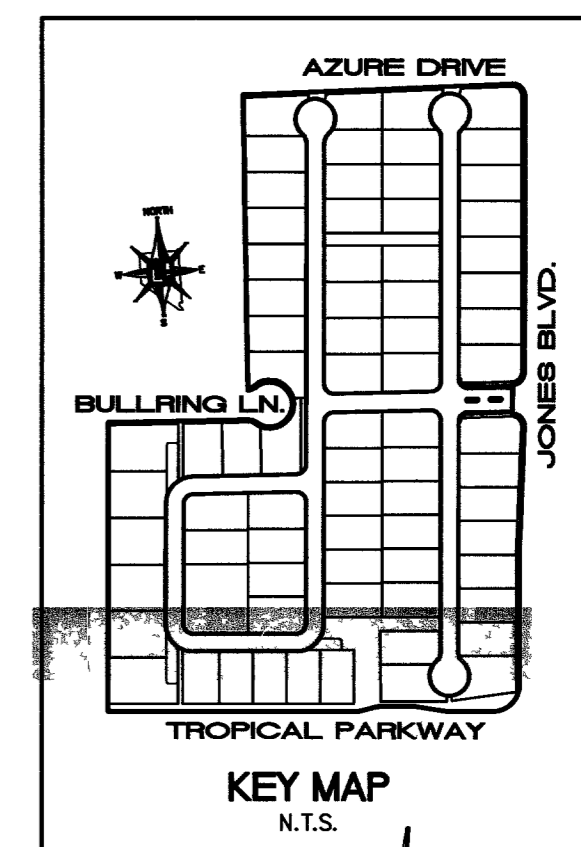


TROPICAL PARKWAY - PLAN
HORIZONTAL SCALE 1"=40'

THE DISTRICT CANNOT GUARANTEE A WATER-TIGHT SHUTDOWN WHERE CONNECTIONS OR REPAIRS TO EXISTING FACILITIES ARE REQUIRED. THE CONTRACTOR SHALL ENSURE ALL LABOR AND EQUIPMENT IS AVAILABLE TO REMOVE FUGITIVE WATER WHICH MAY IMPED CONSTRUCTION AT ALL TIMES. COORDINATE WITH INSPECTION DIVISION MUST TAKE PLACE PRIOR TO ANY TRIAL SHUTDOWN. CONTRACTOR TO INSTALL TEMPORARY SERVICE TO ENSURE PROPER SHUTDOWN IN THE EVENT NO OTHER APPURTENANCES ARE AVAILABLE.

PROTECT WATERLINES IN PLACE. WHEREVER A WATERLINE IS ABOVE A STORM DRAIN OR SEWER WHERE COMPACTION REQUIREMENTS UNDER A WATERLINE CANNOT BE MET, BACKFILL TRENCH WITH CLASS II CONTROLLED LOW STRENGTH MATERIAL (CLSM) TO THE SPRINGLINE OF THE WATERLINE. THIS REQUIREMENT IS FOR STRUCTURAL SUPPORT ONLY. ADDITIONAL HEALTH REGULATIONS MAY APPLY PER UDACS 2.19.



TROPICAL PARKWAY - PROFILE
HORIZONTAL SCALE: 1"=40'
VERTICAL SCALE: 1"=4'

BENCHMARK
CITY OF LAS VEGAS BENCHMARK 5LV90 26C4
RIVET AND PLATE IN CONCRETE PAD (TRANSFORMER) ON SOUTH SIDE OF TROPICAL PARKWAY +/- 170 FT WEST OF TORREY PINES
ELEVATION: 705.7667 METERS (NAVD 88)
2315.50 FEET (NAVD 88)

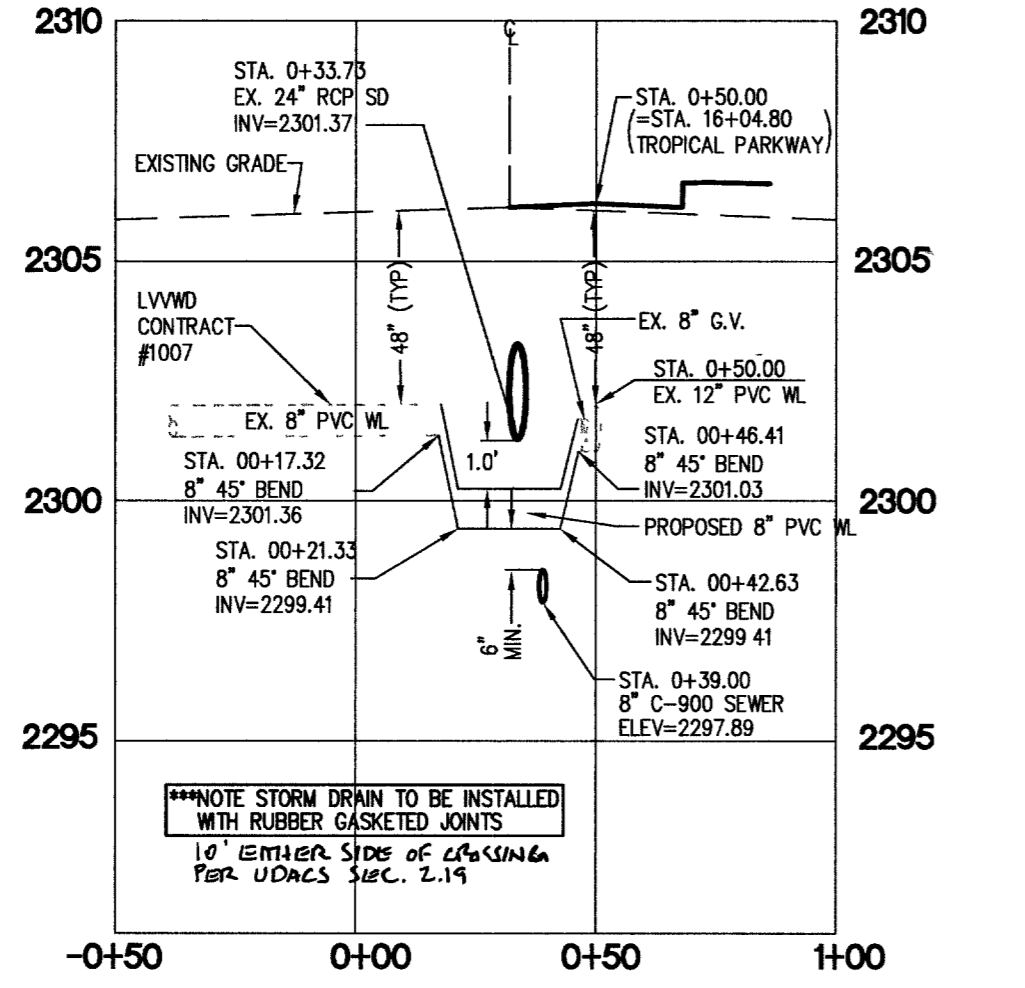
BASIS OF BEARINGS
NORTH 05°19'28" EAST, BEING THE BEARING OF THE EAST LINE OF THE NORTHEAST QUARTER (NE 1/4) OF SECTION 26, TOWNSHIP 19 SOUTH, RANGE 60 EAST, M.D.M., CITY OF LAS VEGAS, CLARK COUNTY, NEVADA, AS SHOWN BY A MAP ON FILE IN THE CLARK COUNTY RECORDER'S OFFICE, CLARK COUNTY, NEVADA FILE NO. 90 OF PARCEL MAPS, AT PAGE 74.

INSTALL WATERLINE IN STEEL CASING PER DETAIL S SHEET DT1. MINIMUM 18" CLEARANCE IS REQUIRED ABOVE THE TOP OF THE CASING. FROM THE UPPER BENDS THROUGHOUT THE LOWERED SECTION OF PIPE, DUCTILE IRON PIPE WITH RESTRAINED JOINTS IS REQUIRED. IN ADDITION, THRUST BLOCKS ARE TO BE INSTALLED AT THE UPPER BENDS.

Avoid overhead power line contact.
Call before you Overhead
1-702-593-6111
NEVADA POWER ENVIRONMENTAL SAFETY SERVICES DEPARTMENT

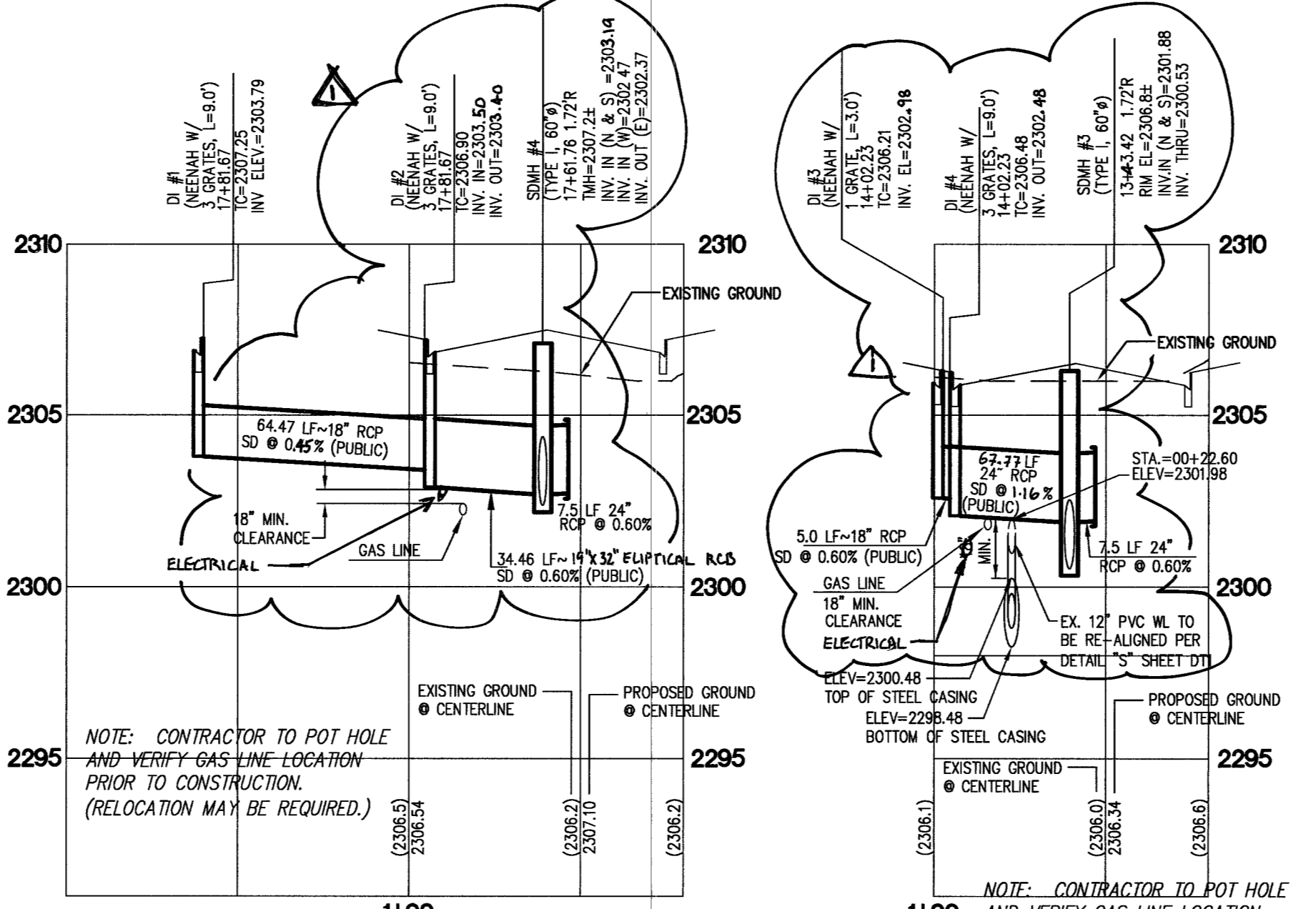
SOILS REPORT
GEO TECHNICAL & ENVIRONMENTAL SERVICES, INC.
7560 WEST SAHARA AVENUE, SUITE 101
LAS VEGAS, NEVADA 89117
TEL: (702) 365-1001
PROJECT NUMBER:

NOTE:
ALL PRIVATE STREETS & DRIVES ARE P.U.E., C.V. SEWER EASEMENTS, AND PUBLIC DRAINAGE EASEMENTS TO BE PRIVATELY MAINTAINED BY I.C.A.



WATER PROFILE - BRONCO ST.
HORIZONTAL SCALE: 1"=40'
VERTICAL SCALE: 1"=4'

CURVE	LENGTH	RADIUS	TANGENT	DELTA
C27	204.67'	41.50'	33.32'	262.2971°
C30	84.80'	54.00'	53.98'	89.5977°
C31	3.30'	20.00'	1.68'	92.2144°
C33	4.95'	30.00'	2.48'	92.7744°
C35	7.35'	30.00'	3.69'	142.0210°
C37	4.90'	20.00'	2.46'	142.0210°



TROPICAL PARKWAY STORM DRAINAGE CROSSING - PROFILES
HORIZONTAL SCALE: 1"=40'
VERTICAL SCALE: 1"=4'

GRADING NOTES

- TETRA TECH SHALL BE NOTIFIED IMMEDIATELY OF ANY DISCREPANCIES IN THE PLANS OR CONDITIONS IN THE FIELD.
- ALL WORK TO BE PERFORMED OUTSIDE OF THE PROJECT BOUNDARY AND ON PRIVATE PROPERTY SHALL NOT BE PERFORMED UNTIL WRITTEN PERMISSION AND EASEMENT HAVE BEEN OBTAINED FROM THE OFFSITE OWNER AND GIVEN TO CITY LAS VEGAS PUBLIC WORKS.
- FOR AREAS THAT ARE FLATTER THAN 2:1 SLOPE, OR LESS THAN 1' ELEVATION DIFFERENCE, SCARPS ARE NOT SHOWN ON PLAN FOR CLARITY PURPOSES.
- ALL SLOPE AREAS SHALL HAVE A MINIMUM ONE FOOT SHOULDER NEXT TO WALL PRIOR TO STARTING SLOPE.
- PAD SECTION SHOWN ON PLANS IS FOR REFERENCE ONLY. FOR ACTUAL SECTION, REFER TO GEOTECHNICAL REPORT FOR SOILS ENGINEERS RECOMMENDATION.
- ALL SIDEWALK INSTALLATIONS SHALL CONFORM TO ADA REQUIREMENTS.
- ADD 2200' TO ALL ELEVATIONS SHOWN.

STREET IMPROVEMENT CONSTRUCTION KEY

- 37' PRIVATE ST. = CONSTRUCT 2" AC PAVING OVER 8.5" TYPE II BASE PER MODIFIED U.S.D.C.C.A. STANDARD DWG. NO. 210.
- 80' PUBLIC R/W HALF STREET = 4" AC PAVING OVER 16" TYPE II BASE PER U.S.D.C.C.A. STANDARD DWG. NO. 205.
- CONSTRUCT "L" CURB PER U.S.D.C.C.A. STANDARD DWG. NO. 216.
- CONSTRUCT 8" WIDE CROSS GUTTER PER U.S.D.C.C.A. STANDARD DRAWING NO. 228.
- NOT USED.
- CONSTRUCT SIDEWALK UNDER-DRAIN PER U.S.D.C.C.A. DWG. NO. 236. STANDARD DRAWING NO. 234.
- CONSTRUCT SIDEWALK RAMP PER U.S.D.C.C.A. DWG. NO. 235. TRANSITIONS PER RAMP DATA TABLE.
- CONSTRUCT 6" HIGH DECORATIVE BLOCKWALL PER CLARK COUNTY STANDARDS AND SPECIFICATIONS.
- 39' PRIVATE ST. = CONSTRUCT 2" AC PAVING OVER 4" TYPE II BASE PER MODIFIED U.S.D.C.C.A. STANDARD DWG. NO. 210.
- 60' PUBLIC R/W HALF STREET = 3" AC PAVING OVER 10" TYPE II BASE PER U.S.D.C.C.A. STANDARD DWG. NO. 205.
- CONSTRUCT DEPRESSION CURB; PER STANDARD DWG. NO. 227.
- INSTALL REMOVABLE BOLLARDS PER DETAIL 4 SEE SHEET 21.
- INSTALL WROUGHT IRON FENCING PER DETAIL 3 SEE SHEET 21.

LEGEND

- MATCHLINE
- PROPERTY LINE / RIGHT-OF-WAY
- "L" TYPE CURB AND GUTTER
- CROSS GUTTER
- WHEELCHAIR RAMP
- CUT OR FILL SLOPE
- PROPOSED AC PAVEMENT AREA
- ADDITIONAL DEDICATION PER CLV TO BE USED BY CLV WHEN DEEMED NEEDED.
- PROPOSED ELEVATION (DESCRIPTION AS SHOWN)
- EXISTING ELEVATION (DESCRIPTION AS SHOWN)
- EXISTING DESIGN ELEVATION (DESCRIPTION AS SHOWN)
- 3.5% SLOPE
- +3.5% SLOPE OF VERTICAL TANGENT LINE
- DETAIL OF SECTION NUMBER SHEET DETAIL IS SHOWN
- BLOCK WALL
- RETAINING WALL
- LOT NUMBER
- PAD ELEVATION
- FINISHED FLOOR ELEVATION

APPROVED FOR CONSTRUCTION
LAS VEGAS VALLEY WATER DISTRICT
DATE: 9/08/03

US HOME CORPORATION
3765 E. SUNSET ROAD, STE. B-1
LAS VEGAS, NEVADA 89120
(702) 4658-7700

TETRA TECH, INC.
INFRASTRUCTURE SOUTH GROUP
401 N. BUREAU DR. SUITE 100, LAS VEGAS, NEVADA 89104
(702) 242-4600

STREET PLAN AND PROFILE
TROPICAL PARKWAY

AZURE / JONES
CITY OF LAS VEGAS, NEVADA

QUALITY CONTROL BY: [Signature]
DESIGNED BY: [Signature]
CHECKED BY: [Signature]

SCALE: [Signature]PROJECT NO. P10027-0004

SEAL
PROFESSIONAL ENGINEER-STATE OF NEVADA
JOSEPH D. THOMSON
LICENSE NO. 11907
CIVIL

SHEET **PP2**
10 OF 22
DRAWING NO. 10744774