

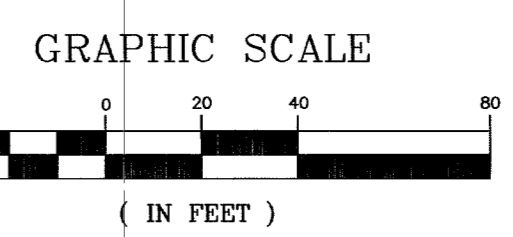
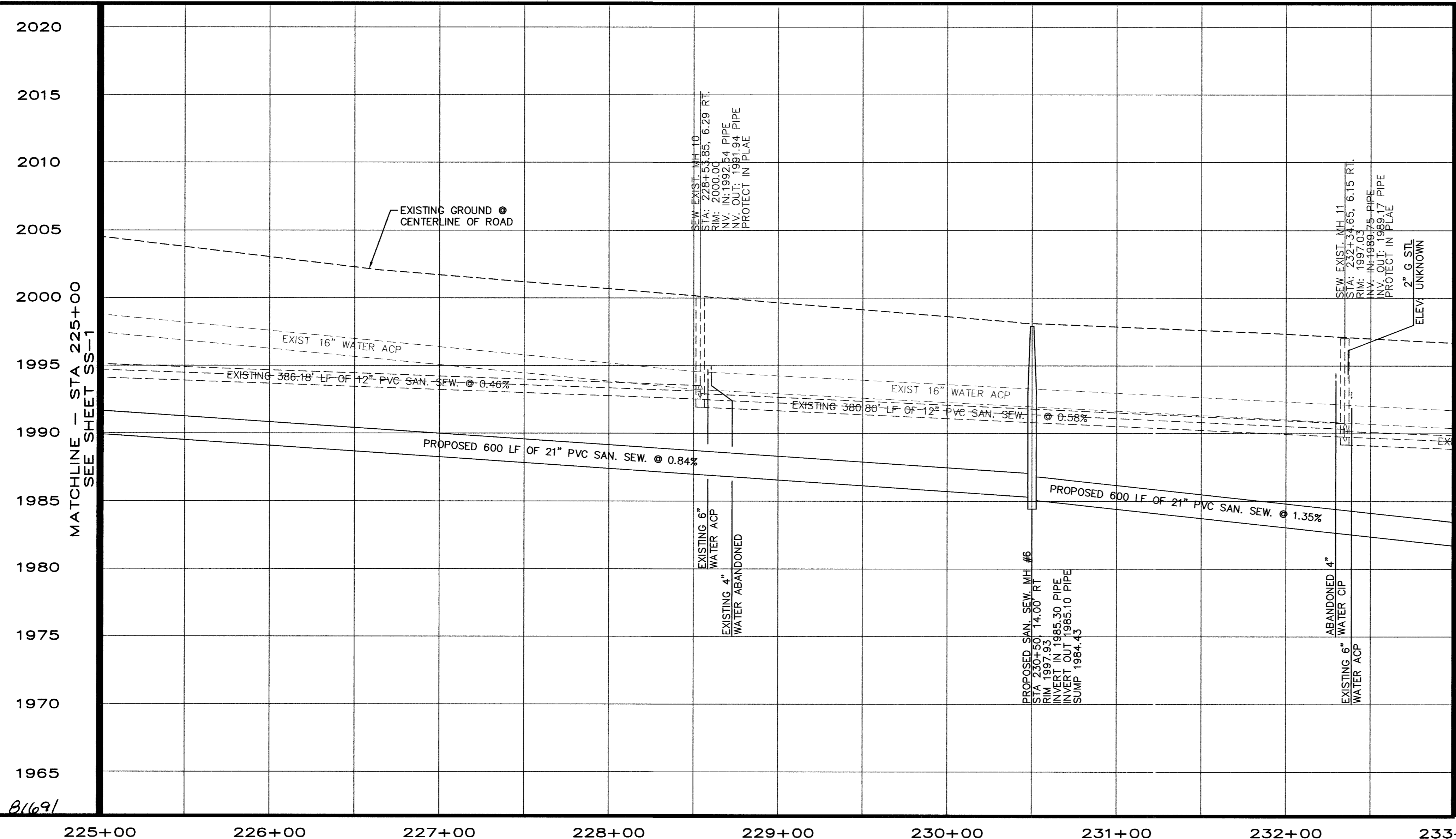
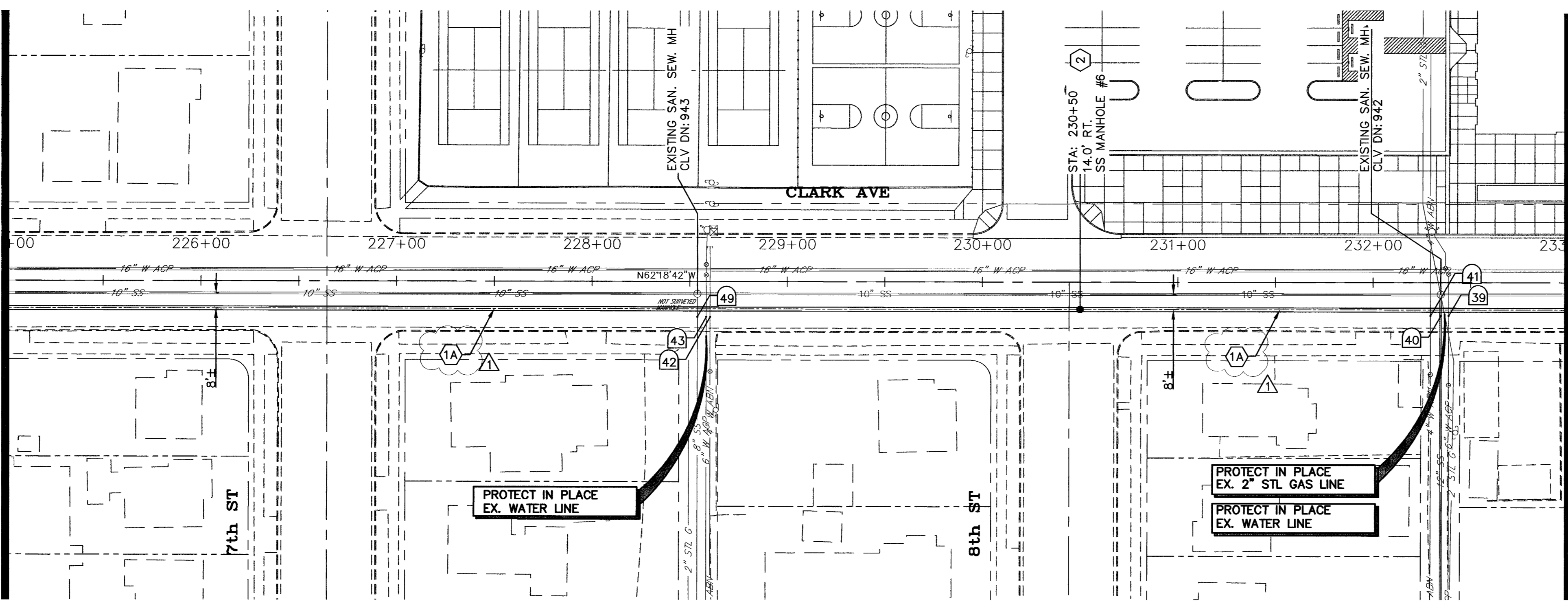
Jul 13, 2005 8:15am - USER: maria.garcia  
 K:\Projects\02255\007\02255\_Sewer\_Design\566007.dwg

MATCHLINE - STA 225+00  
 SEE SHEET SS-1

MATCHLINE - STA 225+00  
 SEE SHEET SS-1

MATCHLINE - STA 233+00  
 SEE SHEET SS-3

MATCHLINE - STA 233+00  
 SEE SHEET SS-3



**PROJECT NOTES:**

1. CONTRACTOR MUST SUBMIT DETAIL DRAWINGS TO CITY OF LAS VEGAS BEFORE CONSTRUCTION TO SHOW HOW THE EXISTING SANITARY SEWER AND MANHOLES WILL BE PROTECTED DURING EXCAVATION AND BACKFILL.
2. PROTECT EXISTING WATER LINES IN PLACE.
3. PROTECT EXISTING GAS LINES IN PLACE.
4. DIMENSIONS ARE FROM CL TO CL OF PIPES.
5. PROTECT EXISTING STORM SEWER LINES IN PLACE.
6. PROTECT EXISTING ELECTRIC LINES IN PLACE.
7. CONTRACTOR SHALL VERIFY EXISTING UTILITY LOCATIONS & ELEVATIONS PRIOR TO CONSTRUCTION.

**SANITARY SEWER NOTES:**

- (1A) INSTALL 21" PVC SANITARY SEWER PIPE. SEE TRENCHING DETAIL SHEET SS-6.
- (2) INSTALL 60" ECCENTRIC MANHOLE PER DCSWW NO. SD-1 & SD-2.

TEST HOLE No.	UTILITY TYPE	UTILITY MATERIAL	MANUAL DEPTH (TOP)	DESCRIPTION
39	WATER	AC (TRANSITE)	3.71'	ABANDONED
40	SANITARY SEWER	CI (CAST IRON)	6.10'	ACTIVE
41	WATER	CI (CAST IRON)	2.46'	ACTIVE
42	WATER	CI (CAST IRON)	2.98'	ABANDONED
43	WATER	AC (TRANSITE)	3.15'	ABANDONED
49	SANITARY SEWER	CI (CAST IRON)	6.28'	ACTIVE

\* - INFORMATION PROVIDED BY THE TEST HOLE DATA FROM 7-14-04 TO 7-19-04

APPROVED FOR CONSTRUCTION  
 15 APR 05 5:20-05  
*Steve Jones*  
 LAS VEGAS VALLEY WATER DISTRICT  
 DATE 7-13-05  
 PROTECT WATERLINES IN PLACE. WHEREVER A WATERLINE IS WITHIN 18" ABOVE A STORM DRAIN LINE, OR WHERE COMPACTION UNDER A WATERLINE CAN NOT BE MET, BACKFILL TRENCH WITH CEMENT SLURRY OR FLOWABLE FILL TO THE SPRINGLINE OF THE WATERLINE. THIS REQUIREMENT IS FOR STRUCTURAL SUPPORT ONLY. ADDITIONAL HEALTH REGULATIONS MAY APPLY PER UDACS 2.19.

Avoid cutting underground utility lines. It's costly.

**Call before you Dig**  
 1-800-227-2600

**SAFETY ALERT**  
 Call Before You Overhead  
 1-702-455-7511  
 1-702-593-6111

CLARK COUNTY TRAFFIC OPERATIONS AND LAS VEGAS AREA COMPUTERIZED TRAFFIC SYSTEM

DATE: \_\_\_\_\_

REVISIONS:

SCALE (H): 1"=40' SCALE (V): 1"=5'

DRAWN BY: TEA DESIGNED BY: MH CHECKED BY: \_\_\_\_\_

DATE: JUL 2005

**Kimley-Horn and Associates, Inc.**  
 Engineering, Planning, and Environmental Consultants  
 1050 E. Flamingo Road, Suite S210, Las Vegas, NV 89119  
 Ph. (702) 734-5666 Fax. (702) 734-5666

**CITY OF LAS VEGAS**

DEPARTMENT OF PUBLIC WORKS  
 PROJECT: CLARK AVENUE SANITARY SEWER  
 SHEET: 225+00 TO 233+00

PROFESSIONAL ENGINEER - STATE OF NEVADA  
 KHALIL A. AMIRKANI  
 Exp. 12/31/06  
 No. 14360

DRAWING NO. SS-2  
 5  
 9

Revised Sanitary Sewer Pipe Size 7/12/05