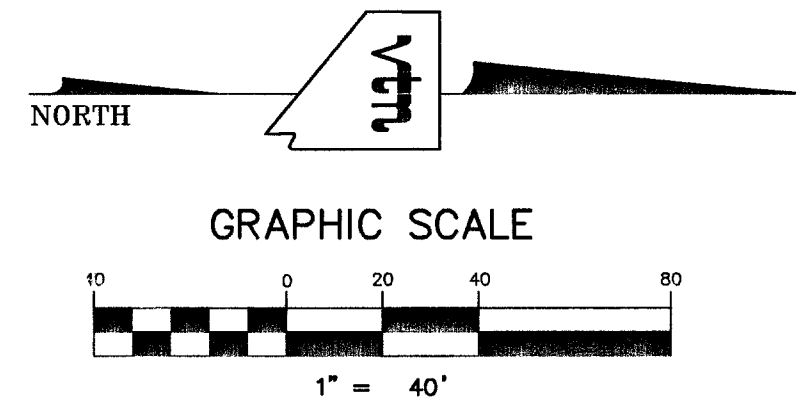
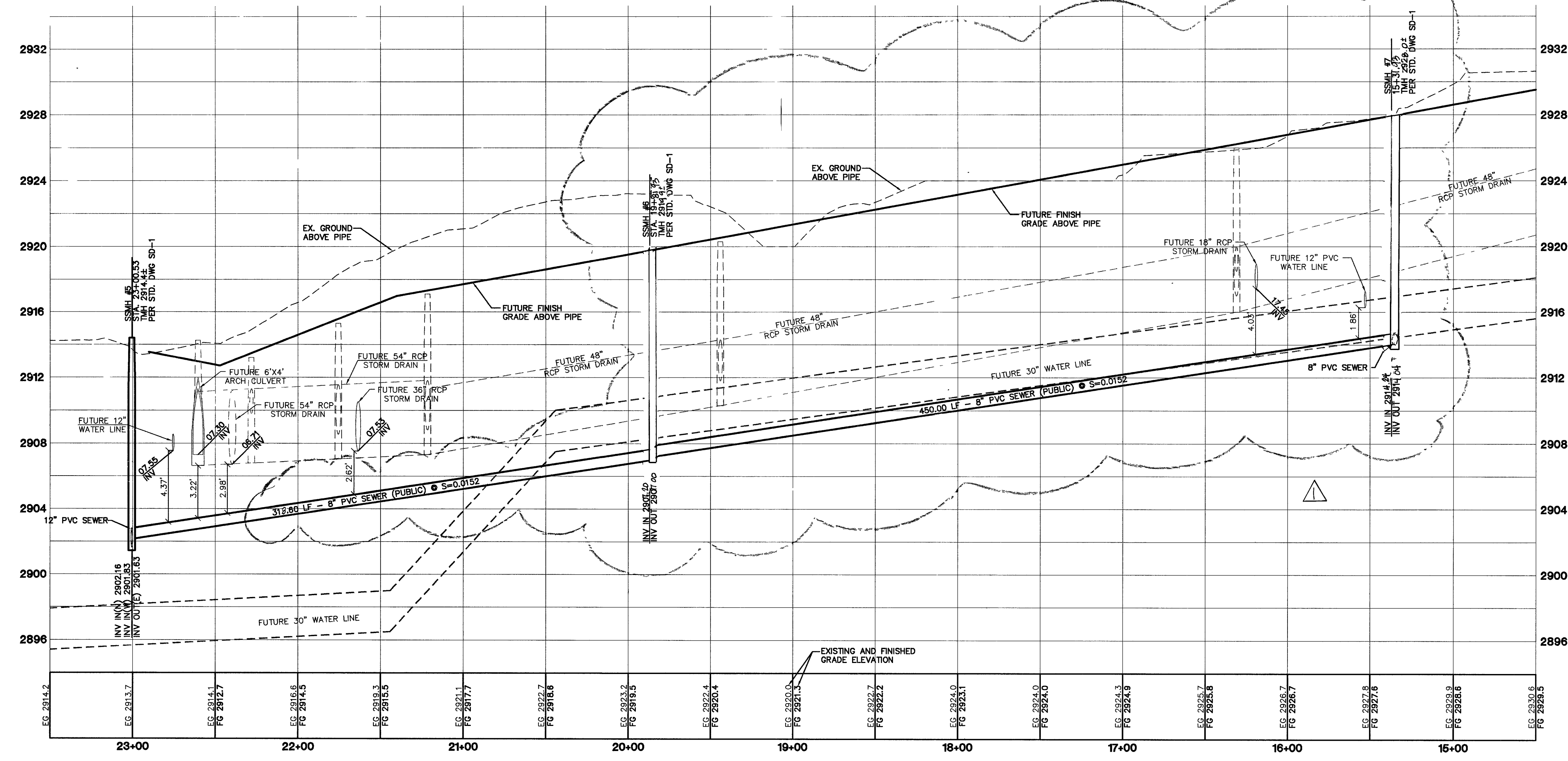


SHAUMBER ROAD (PUBLIC STREET)



CONTRACTOR NOTE:
CONTRACTOR SHALL VERIFY HORIZONTAL AND VERTICAL LOCATION OF EXISTING UTILITIES AND NOTIFY THE DESIGN ENGINEER IMMEDIATELY OF ANY DISCREPANCIES PRIOR TO CONSTRUCTION.

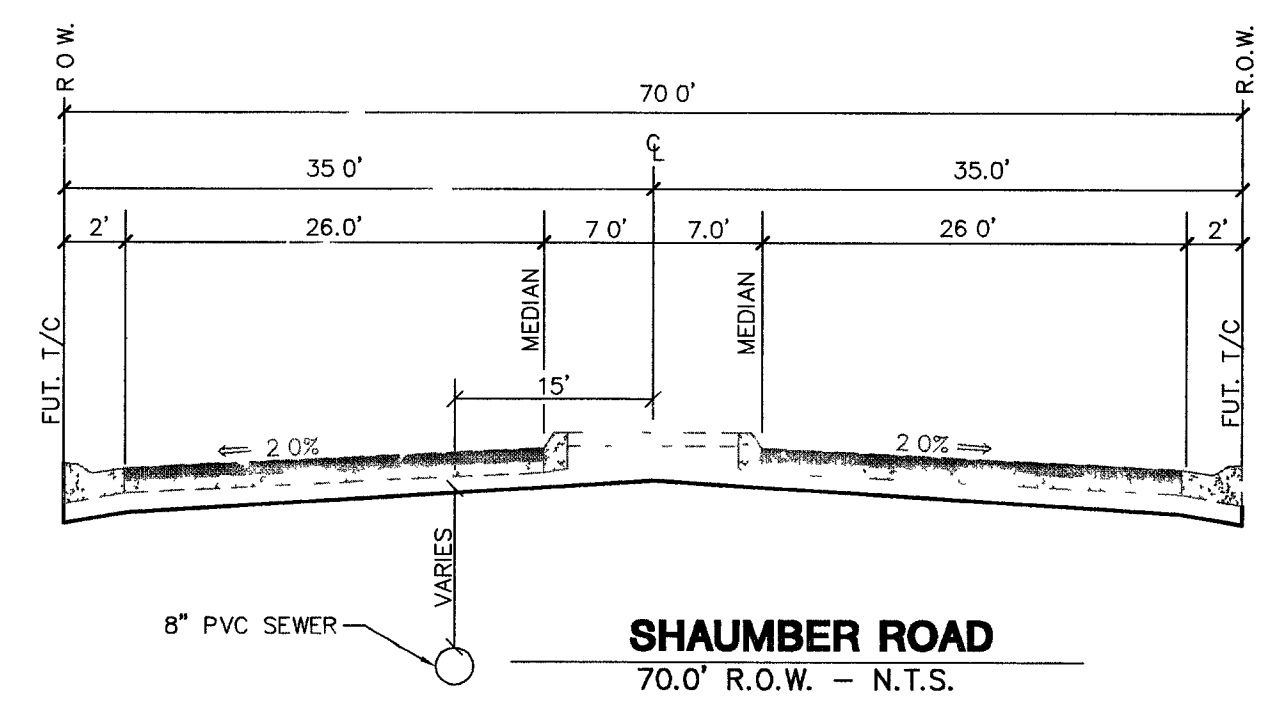
BASIS OF BEARINGS
THE BASIS OF BEARINGS FOR THIS PROJECT IS NORTH 00°08'16" EAST BEING THE EAST LINE OF THE NORTHWEST QUARTER (ONE 1/4) OF THE SECTION 24, TOWNSHIP 19 SOUTH, RANGE 59 EAST, M.D.M., CLARK COUNTY, NEVADA, AS SHOWN ON A RECORD OF SURVEY ON FILE IN THE CLARK COUNTY, NEVADA, RECORDER'S OFFICE IN FILE 123 AT PAGE 32.

PROJECT BENCHMARK
PROJECT DATUM: NORTH AMERICAN VERTICAL DATUM OF 1988 (NAVD88)
CLARK COUNTY VERTICAL CONTROL: 1000:6N6
NAVD88 ELEVATION: 787.794 METERS (2584.62 FEET)
RIVET AND SQUARE ALUMINUM PLATE IN A CONCRETE CYLINDER, LOCATED 25' SOUTH & 50' EAST OF GRAND CANYON DRIVE AND RED COACH AVENUE, 1' WEST OF ELECTRICAL VAULT.

Avoid cutting underground utility lines. It's costly.
Call before you Dig
1-800-227-2600

Avoid overhead power line contact. It's costly.
Call before you Overhead
1-702-593-6111

Call before you Underground
1-702-455-7511
CLARK COUNTY TRAFFIC OPERATIONS AND
1-702-229-6611
LAS VEGAS AREA COMPUTERIZED TRAFFIC SYSTEM



7									
6									
5									
4									
3									
2									
1	5/1/05	AY	REV	DATE					

CLIFFS EDGE LLC
3455 CLIFF SHADOWS PARKWAY, SUITE 290
LAS VEGAS, NEVADA 89129
(702) 777-1221

CITY OF LAS VEGAS, NEVADA

SEWER PLAN AND PROFILE
SHAUMBER ROAD
STA. 23+00.53 TO 15+36.93

CLIFFS EDGE CENTENNIAL PARKWAY SEWER IMPROVEMENTS

2727 SOUTH RAINBOW BOULEVARD LAS VEGAS, NEVADA 89146-5148
PH (702) 873-7550 FAX (702) 362-2597
LAS VEGAS, NEVADA 89129
CONSULTING ENGINEERS • PLANNERS • LAND SURVEYORS

PROFESSIONAL ENGINEER STATE OF NEVADA
NO. 12811
DANIEL H. HOOD
CIVIL
9-17-04

SHEET **SS3**
6 OF 7 SHEETS
DRAWING NO. 102Y4416-AC-10

EXPIRES 06-30-05

SCALE: 1"=40' HORIZ.
1"=4' VERT.