

Call before you OVERHEAD 1-702-593-6111

Call before you Dig 1-800-227-2600

PROJECT BENCHMARK
PROJECT DATUM: NORTH AMERICAN VERTICAL DATUM OF 1988 (NAVD88)
CITY OF LAS VEGAS BENCHMARK: 0C90178
ELEVATION: 799.0857 METERS (2,621.87 FEET)
RIVET AND SQUARE ALUMINUM PLATE IN TOP CENTER OF HEADWALL ON THE WEST SIDE OF U.S. 95 NEAR MILE MARKER 90.15.

CONSTRUCTION NOTES STREET IMPROVEMENTS

- (A) CONSTRUCT "L" TYPE CURB & GUTTER PER STD. DWG. NO. 216
- (B) CONSTRUCT 30" ROLL TYPE CURB PER STD. DWG. NO. 217A
- (C) CONSTRUCT 8.0' WIDE CROSS GUTTER PER STD. DWG. NO. 228
- (E) CONSTRUCT 5.0' WIDE SIDEWALK PER STD. DWG. NO. 234
- (F) SIDEWALK RAMP (CASE 1) PER STD. DWG. NO. 235 (A & B PER TABLE)
- (G) SIDEWALK UNDER DRAIN PER STD. DWG. NO. 236

BASIS OF BEARING:
SOUTH 89°10'24" EAST - BEING THE SOUTH LINE OF THE NORTHWEST QUARTER (NW 1/4) OF THE NORTHEAST QUARTER (NE 1/4) OF SECTION 18, TOWNSHIP 19 SOUTH, RANGE 80 EAST, M.D.M., CLARK COUNTY, NEVADA AS SHOWN BY THAT RECORD OF SURVEY ON FILE IN THE OFFICE OF THE COUNTY RECORDER, CLARK COUNTY, NEVADA, IN FILE 114 OF SURVEYS, AT PAGE 57.

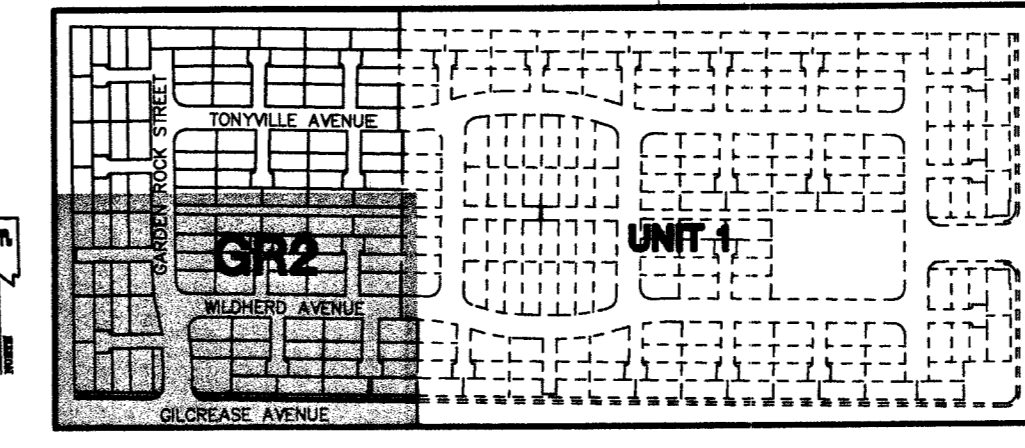
NOTE:
ALL STREETS ARE PRIVATE DRIVES UNLESS OTHERWISE NOTED. ALL PRIVATE STREETS AND DRIVES ARE P.U.E., PUBLIC SEWER EASEMENTS, AND PUBLIC DRAINAGE EASEMENTS TO BE PRIVATELY MAINTAINED BY HOA.

FOR ALL GRADING & STREET SECTIONS SEE SHEET # DT1

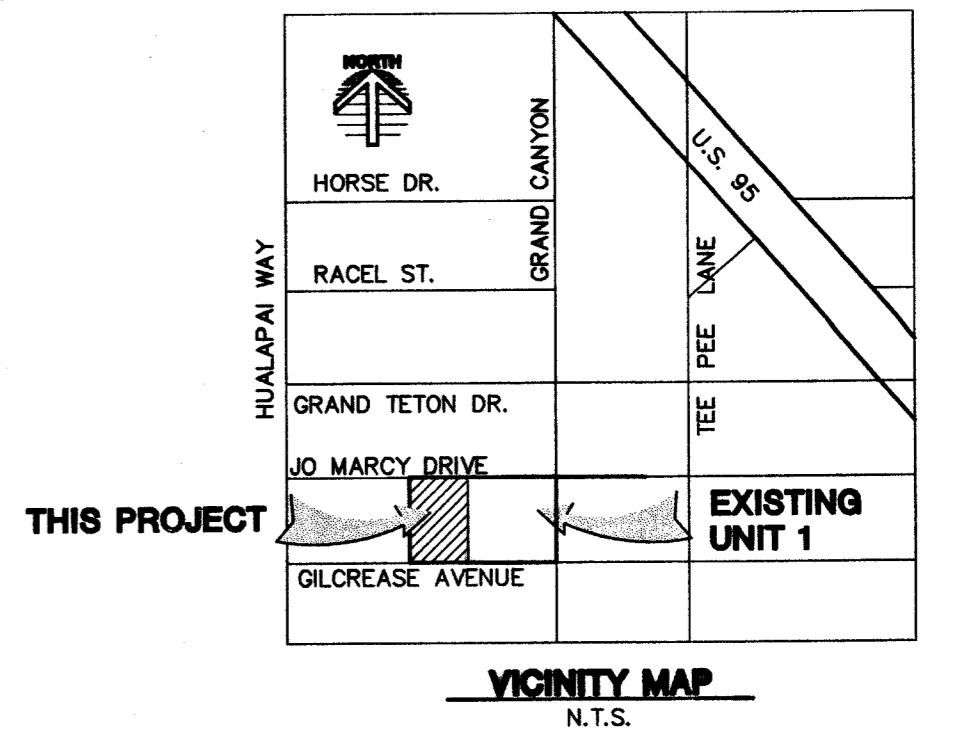
RAMP TABLE
CASE 1

RAMP #	LENGTH 'A'	LENGTH 'B'
1	8.00'	8.00'
2	12.50'	12.50'

FOR CURVE & LINE TABLE, SEE SHEET GR1

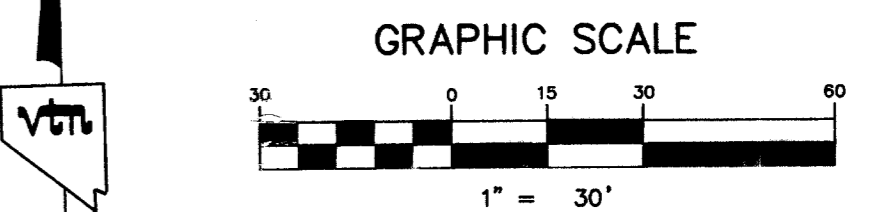
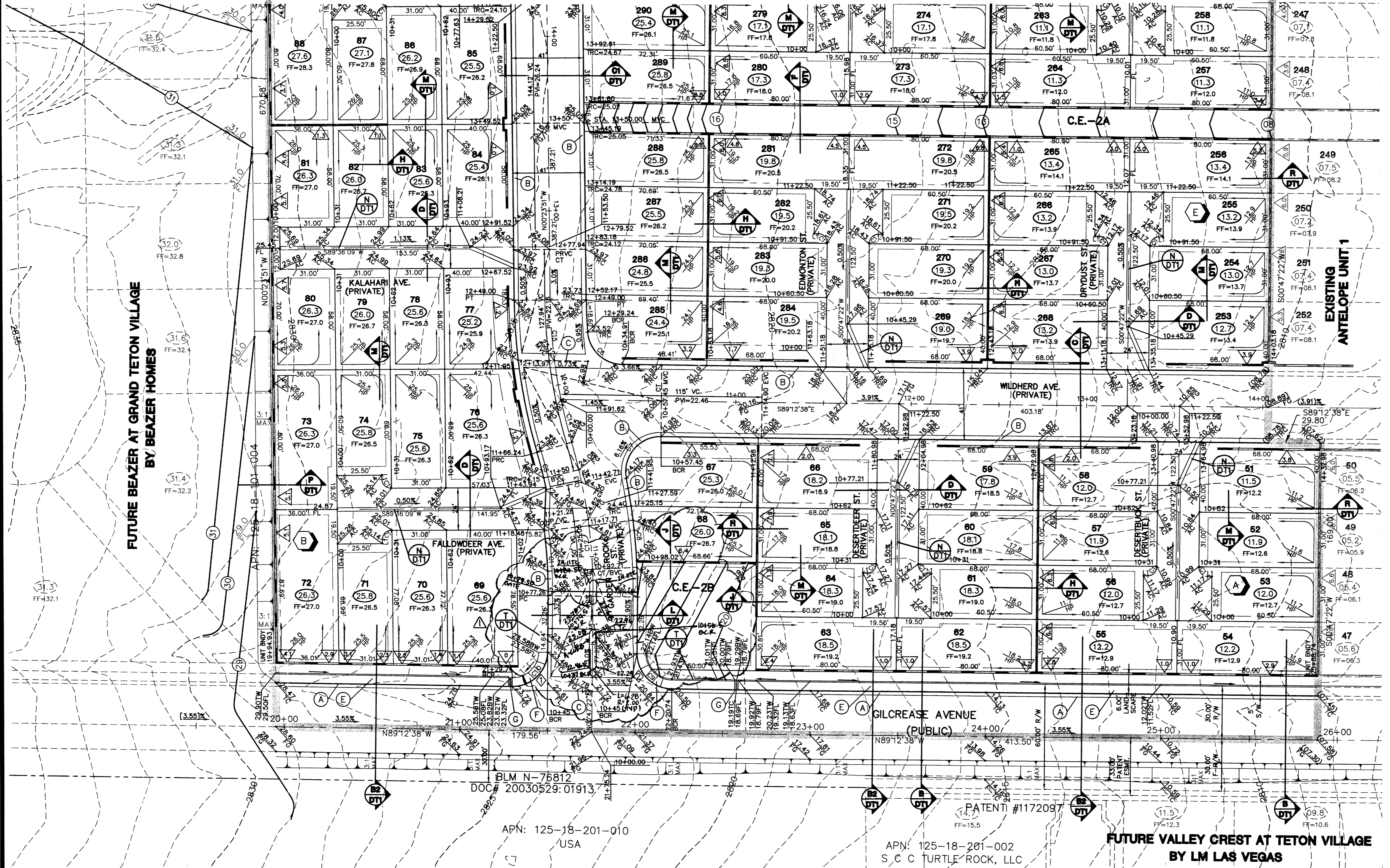


KEY MAP



VICINITY MAP
N.T.S.

SEE SHEET GR1



- LEGEND**
- FG FINISH GRADE
 - FL FLOW LINE
 - TC TOP OF CURB
 - TRC TOP OF ROLL CURB
 - EAC EDGE OF ASPHALT PAVEMENT
 - F FUTURE (FUT.)
 - X- EXISTING (EX.)
 - VG VALLEY GUTTER
 - NG NATURAL GROUND
 - H.P. HIGH POINT
 - L.P. LOW POINT
 - C/L CENTER LINE
 - O/C OFFSET GROWN
 - BC BACK OF CURB
 - BCR BEGIN CURB RETURN
 - TF TOP OF FOOTING
 - GR GRADE BREAK
 - PC POINT OF CURVATURE
 - PT POINT OF TANGENCY
 - PRC POINT OF REVERSE CURVATURE
 - POC POINT OF COMPOUND CURVATURE
 - BVC BEGIN VERTICAL CURVE
 - MVC MID-POINT OF VERTICAL CURVE
 - ENC END VERTICAL CURVE
 - PRVC POINT OF REVERSE VERTICAL CURVE
 - PVI POINT OF VERTICAL INTERSECTION
 - TPW TOP OF PLANTER WALL
 - TRW TOP OF RETAINMENT WALL
 - TOP TOP OF CHANNEL/SCARP
 - TOE TOP OF CHANNEL/SCARP
 - TOB TOP OF BOX
 - PP POWER POLE
 - TRANS. TRANSITION
 - RET. RETAINMENT
 - INT. INTERSECTION
 - D.G. DESIGN GRADE
 - TSW TOP OF SIDEWALK
 - FF FINISH FLOOR
 - GFF GARAGE FINISH FLOOR
 - BFE BASE FLOOD ELEVATION
 - RCP REINFORCED CONCRETE PIPE
 - SD STORM DRAIN
 - DI DROP INLET
 - R/W RIGHT-OF-WAY
 - S/W SIDEWALK
 - BCL BACK OF CURB LENGTH
 - CT CROWN TRANSITION
 - EG EXISTING GROUND
- EX. CONTOUR(5' INTERVAL)
 - EX. CONTOUR(1' INTERVAL)
 - PROPOSED CONTOUR
 - PROPOSED PAD GRADE
 - FUT./EXIST. PAD GRADE
 - SLOPE AND FLOW DIRECTION
 - EDGE OF EXIST. A.C.
 - SAW CUT & MATCH A.C.
 - SIDEWALK RAMP
 - PAD SWALE SLOPES
 - SCARP AREA
 - LOT NUMBER
 - BLOCK NUMBER
 - MAX. RETAINING HEIGHT (FEET)
 - SIGHT VISIBILITY ZONES
 - PROJECT BOUNDARY LINE
 - SETBACK LINE
 - R/W OR P/L
 - CENTER LINE
 - BACK OF CURB
 - LIP OF GUTTER
 - EXIST. IMPROVEMENTS
 - FUTURE IMPROVEMENTS
 - RETAINING WALL
 - CONC. BLOCK WALL
 - EXIST. CONC. BLOCK WALL
 - EXIST. DIRT ROAD
 - EXIST. AC
 - CONSTRUCTION PHASE LINE
 - OR UNIT BOUNDARY LINE
 - MATCHLINE

GREYSTONE HOMES
CITY OF LAS VEGAS, NEVADA
3765 E. SUNSET #91
LAS VEGAS, NEVADA 89120
(702) 498-7700

GRADING PLAN

ANTELOPE UNIT 2

DRAWN BY: AUG. 2003
DESIGNED BY: AUG. 2003
CHECKED BY: AUG. 2003

EXPIRES 06-30-04

PROFESSIONAL ENGINEER - STATE OF NEVADA
AARON M. YAMACHIKA, P.E. #15079
CIVIL
No. 16079

SHEET
GR2
8 OF 25 SHEETS
DRAWING NO.
1074781-2

64067 76811

Aaron M. Yamachika, P.E. #15079
DATE: 1/24/04

I CERTIFY THAT THIS GRADING PLAN IS IN CONFORMANCE WITH THE APPROVED DRAINAGE STUDY ON FILE AT THE CITY OF LAS VEGAS FOR THIS PROJECT.