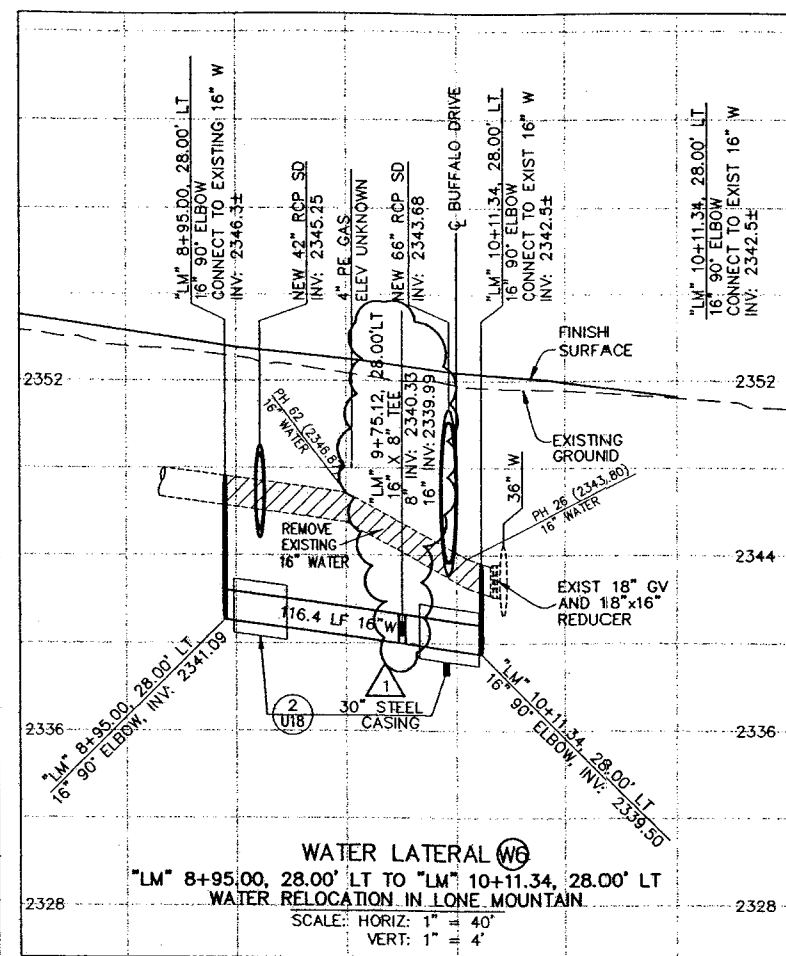
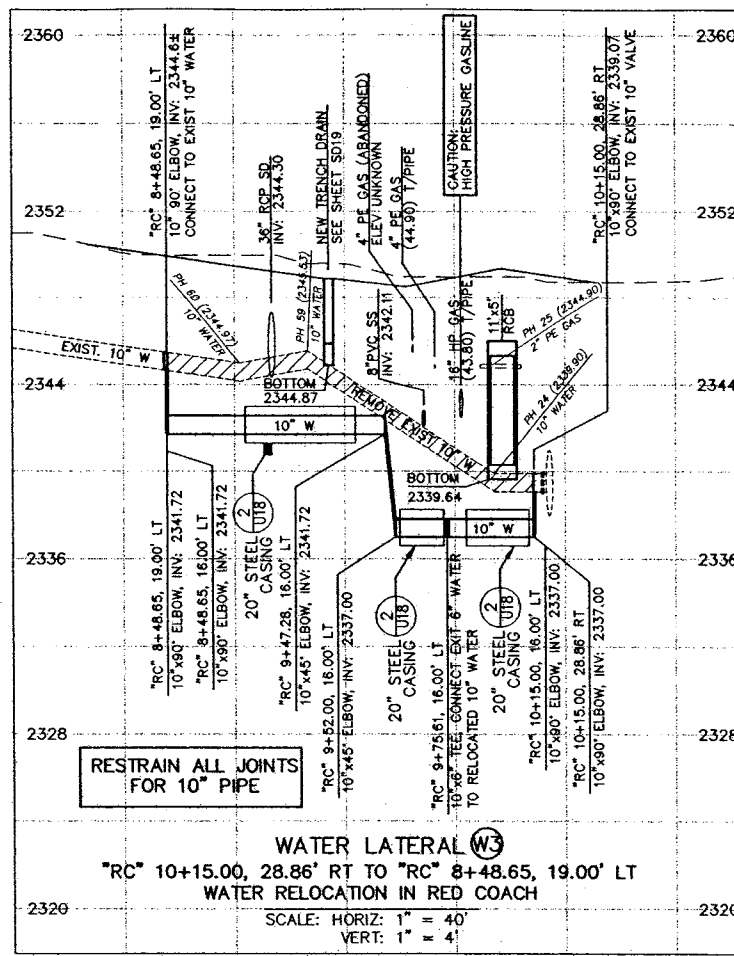
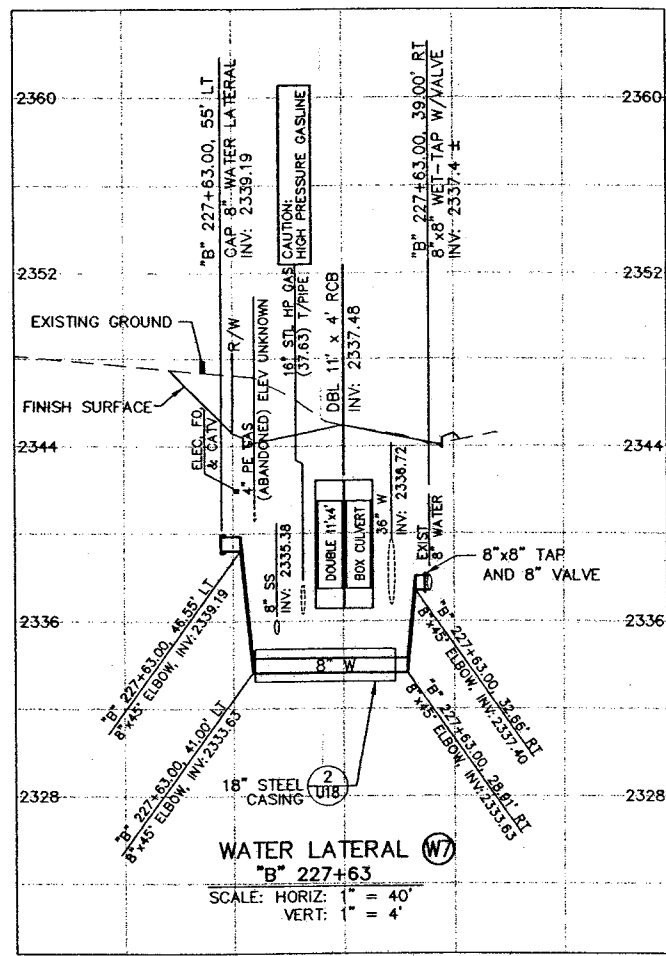
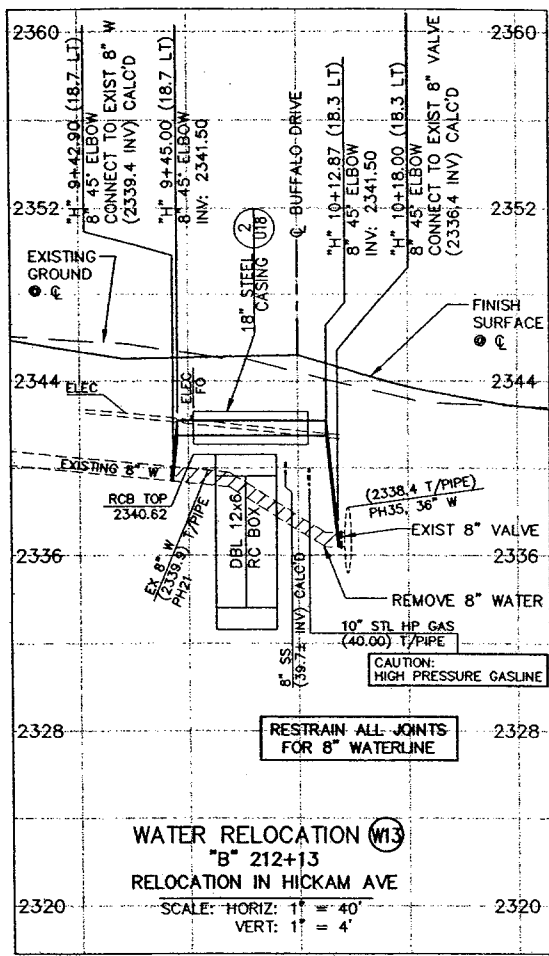


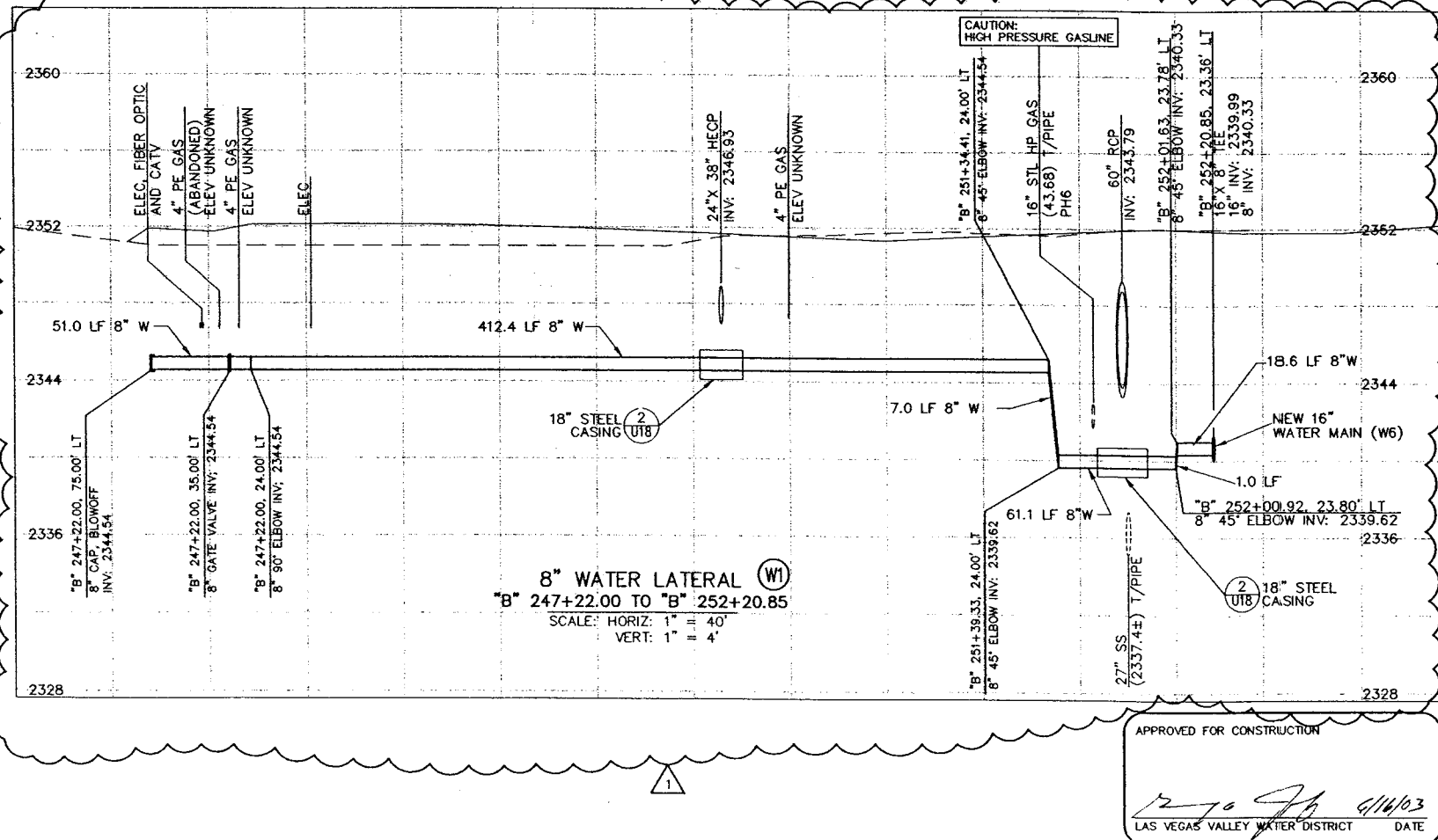
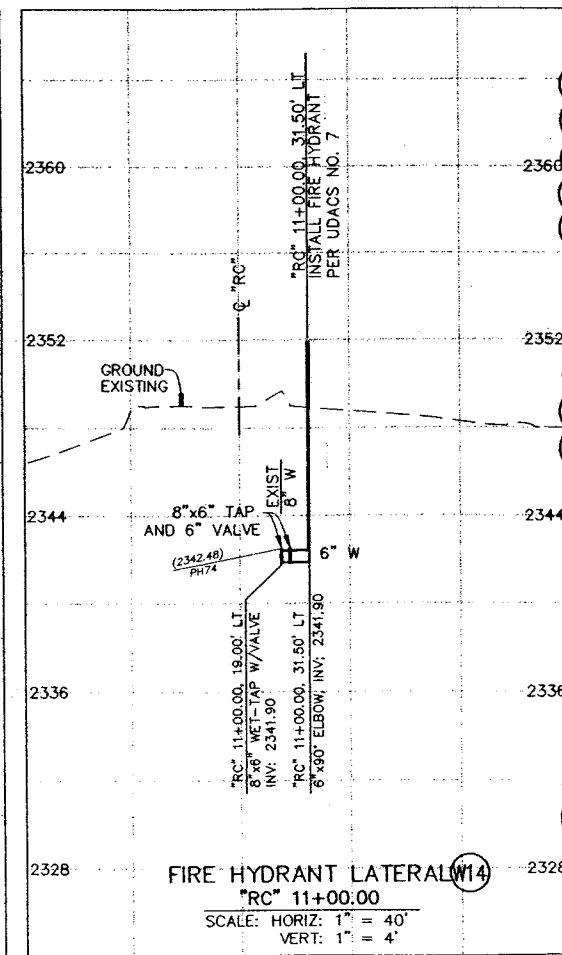
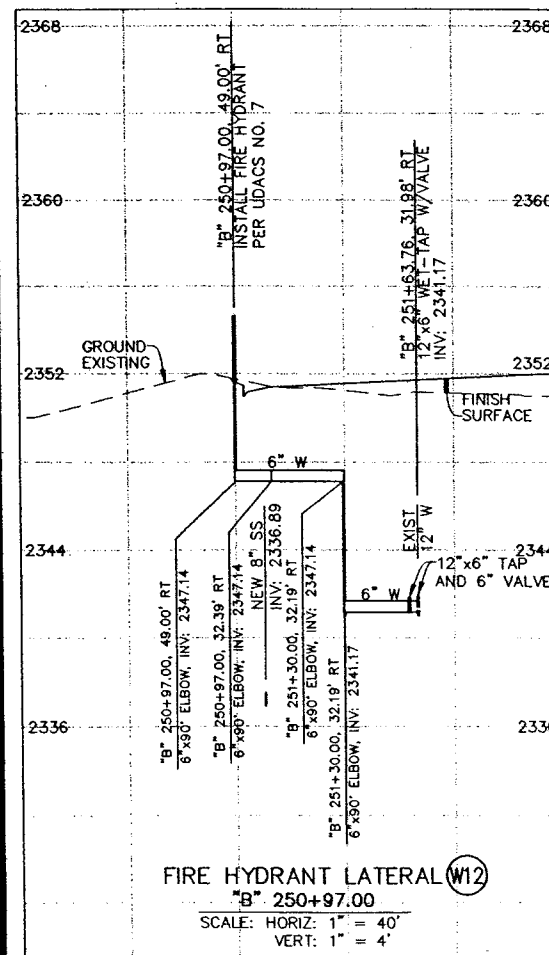
3CV PROJ # 412.405



DEPARTMENT OF PUBLIC WORKS
 400 EAST STEWART
 LAS VEGAS, NEVADA, NV 89101
 (702) 229-6278

G. C. WALLACE, INC.
 Engineers/Planners/Surveyors
 1425 W. BURNING WOODS BLVD., SUITE 100
 LAS VEGAS, NEVADA 89102
 (702) 804-2000

REVISIONS:
 NO. DATE BY
 1 1/19/03 BOR ADDED/REVISED WATER LATERALS
 2 2/19/03 BOR



APPROVED FOR CONSTRUCTION

3-19-03
 1270 JH 4/16/03
 LAS VEGAS VALLEY WATER DISTRICT DATE

SHEET 2/10/03
 DESIGNED BY: JKL
 CHECKED BY: JKL
 PROJECT NO: 412.405

TITLE
 BUFFALO DRIVE WATERLINE LATERAL PROFILES
 BUFFALO DRIVE CHEYENNE TO LONE MOUNTAIN

SCALE: 1" = 40' HORIZ
 1" = 4' VERT

SEAL
 BRADFORD G. ROCKWELL
 CIVIL ENGINEER
 No. 12/21/2002
 License No. 14253

3-19-03
 SHEET W17
 73 OF 93 SHEETS
 DRAWING NO. 107-V3593