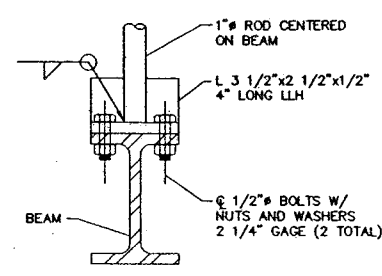
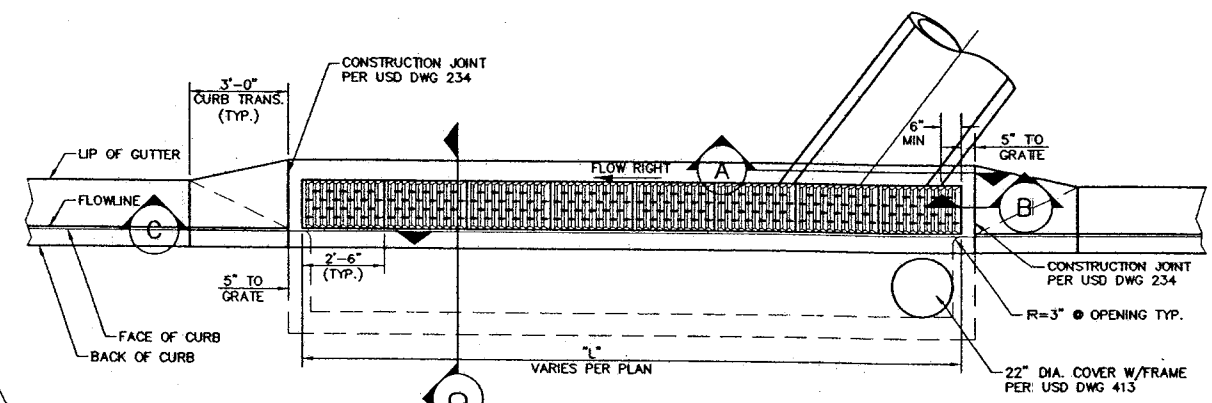


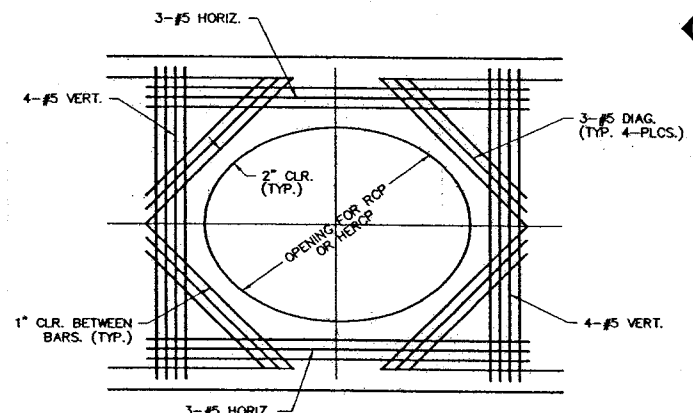
DETAIL A - PROTECTIVE FACE & ROD
SCALE 3\"/>



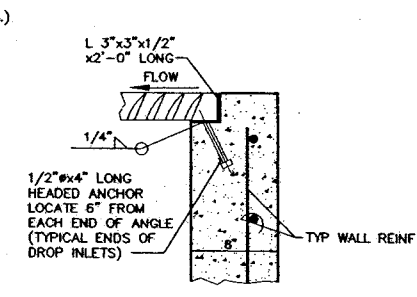
DETAIL B
SCALE 3\"/>



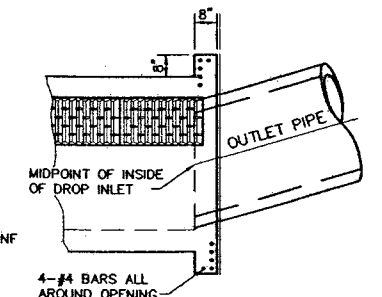
DROP INLET LAYOUT PLAN
SCALE 3/8\"/>



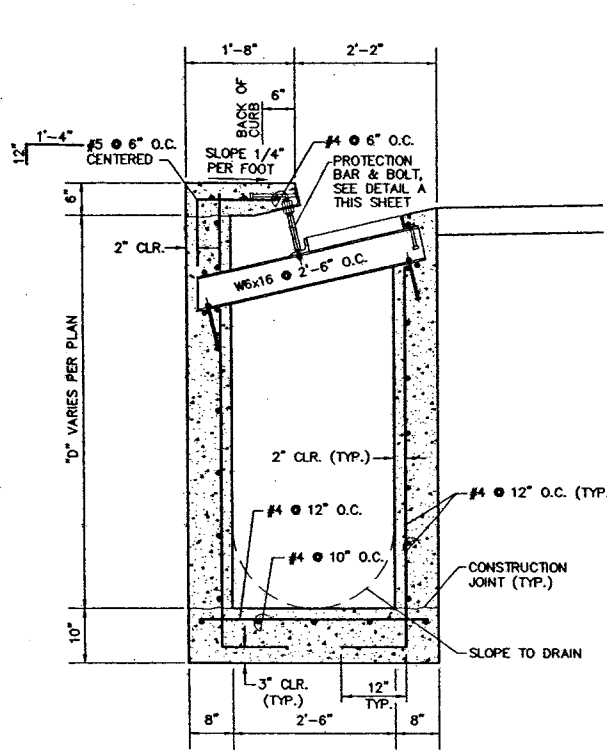
SECTION A
SCALE 3/4\"/>



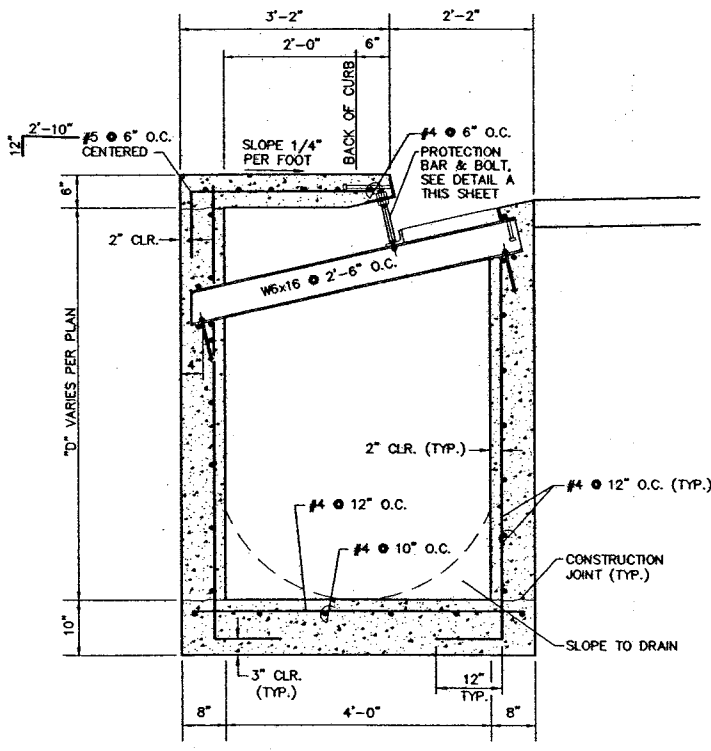
SECTION B
SCALE 1-1/2\"/>



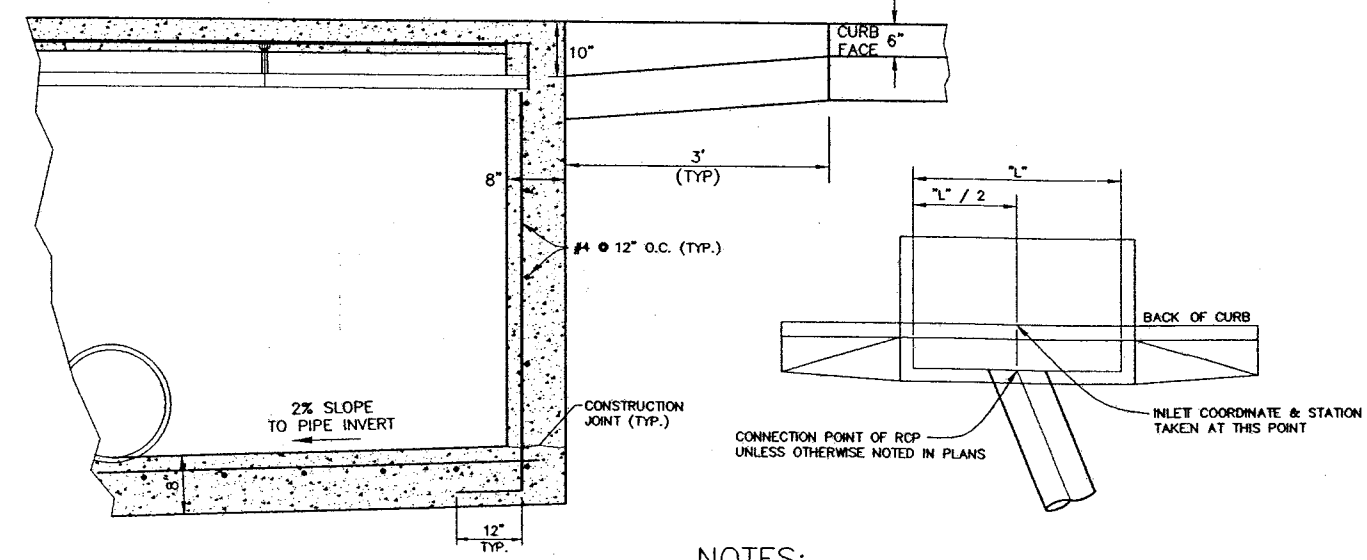
END CONNECTION DETAIL
(SIDE ENTRY CONDITION) SCALE 3/8\"/>



TYPE \"DM2\" DROP INLET SECTION D
SCALE 3/4\"/>



TYPE \"CM2\" DROP INLET SECTION D
SCALE 3/4\"/>



SECTION C
NO SCALE

DROP INLET GRATE SCHEDULE

TYPE	\"L\"	NO. OF GRATES
DM2	10.0'	4
DM2	50.0'	20
CM2	17.5'	7
CM2	20.0'	8
CM2	40.0'	16

NOTES:

- CONCRETE SHALL BE CLASS \"D\" OR \"DA\".
- OUTLET PIPE SHALL BE TRIMMED FLUSH WITH INSIDE FACE OF INLET.
- GRATES SHOWN ON THIS SHEET ARE FOR FLOW RIGHT CONDITIONS. FLOW CONDITIONS ARE SHOWN FOR EVERY DROP INLET ON SHEETS SD1-SD15. CONTRACTOR MUST SPECIFY FLOW LEFT OR FLOW RIGHT WHEN ORDERING L STYLE GRATES.
- ALL EXPOSED METALS SHALL BE HOT DIP GALVANIZED AFTER FABRICATION.
- PROVIDE 1/2\" (MIN.) CLEARANCE ALL AROUND THE STEEL IBEAM, DRY PACK AFTER INSTALLATION.
- WHEN REQUIRED BY THE LENGTH OF OPENING, PLATE ANGLE MAY BE DELIVERED IN SECTIONS AND BUTT WELDED IN PLACE.
- ALL GALVANIZING DAMAGED BY WELDING SHALL RECEIVE TWO COATS OF GALVALLOY OR EQUAL.
- ANGLE ANCHORS SHALL BE EMBEDDED MIDPOINT IN EACH ENDWALL AND EVENLY SPACED (MAXIMUM SPACING OF 2').

DEPARTMENT OF PUBLIC WORKS
400 EAST STEWART
LAS VEGAS, NEVADA, NV 89101
(702) 228-4276

G.C. WALLACE, INC.
Engineers/Planners/Surveyors
1555 SOUTH RAINBOW BLVD., LAS VEGAS, NEVADA 89146
(702) 804-2000

SHEET
DRAWN BY: JLT
DESIGNED BY: BRG
CHECKED BY: JBR
PROJECT NO: 112-405
SCALE: 1\"/>

BUFFALO DRIVE
STORM DRAIN
DROP INLET S TYPE CM2 AND DM2

BUFFALO DRIVE
CHEYENNE TO LONE MOUNTAIN

2/10/03
2/10/03
2/10/03
2/10/03

SEAL
ENGINEER
RANDALL K. GRENELICH
No. 8317
2/10/03

SHEET
SD17
47 OF 93 SHEETS
DRAWING NO.
107-V3593

GCW PROJ # 412-405

15966