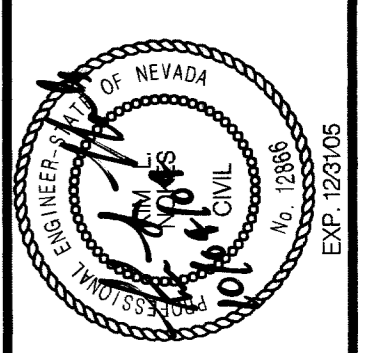


**SHEET NOTES**

1. SEE REMOVAL PLANS FOR SAWCUT, COLD MILLING AND FULL DEPTH PAVEMENT CONSTRUCTION LIMITS.
2. SEE EROSION CONTROL PLANS FOR CONSTRUCTION LIMITS OF GRAVEL MULCH AND RIPRAP MATERIAL.
3. SEE LANDSCAPING PLANS FOR RESTORATION OF EXISTING LANDSCAPING.
4. ALL EXCAVATED SLOPES ON "SEB" AND "SWB" ARE AS SHOWN ON THE TYPICAL SECTIONS UNLESS NOTED ON THESE PLANS AND DETAIL SHEETS.
5. SEE THE STORM DRAINAGE PLANS FOR GRADING AND CONSTRUCTION OF INLETS, HEADWALLS, AND PIPES.
6. CONSTRUCT 3/4-INCH PLANTMIX BITUMINOUS OPEN-GRADED SURFACING ON ANASAZI DRIVE AND CONNECTING RAMPS TO THE LIMITS SHOWN.
7. DETAILS FOR BARRIER, CURBING, CURB RAMPS AND SIDEWALKS LOCATED WITHIN THE BRIDGE OR APPROACH SLABS ARE SHOWN ON THE BRIDGE CONSTRUCTION SHEETS.
8. SEE SHEET C-10 FOR RAISED ISLAND DETAILS AND LAYOUT CONTROL. LAYOUT CONTROL FOR MEDIAN CURB LINES ARE SHOWN IN THE TABLES ON SHEET C-9.
9. SEE SHEET C-11 FOR CONSTRUCTION NOTE INFORMATION.
10. SEE SHEET C-10 FOR ADDITIONAL SIDEWALK CONTROL DATA. SEE SHEET C-9 FOR SIDEWALK ELEVATION DATA.
11. ALL AC ELEVATIONS ARE TO THE TOP OF THE PLANTMIX BITUMINOUS SURFACING FINISH GRADE.

APPD	REVISIONS
No.	Date



DESIGNED: P/LC	DRWN: KLN	CHECKED: PTO-645545	JOB NO: PTD-645545	HORIZ: 1"=20'	VERT: NONE	DATE: 9-20-04
----------------	-----------	---------------------	--------------------	---------------	------------	---------------

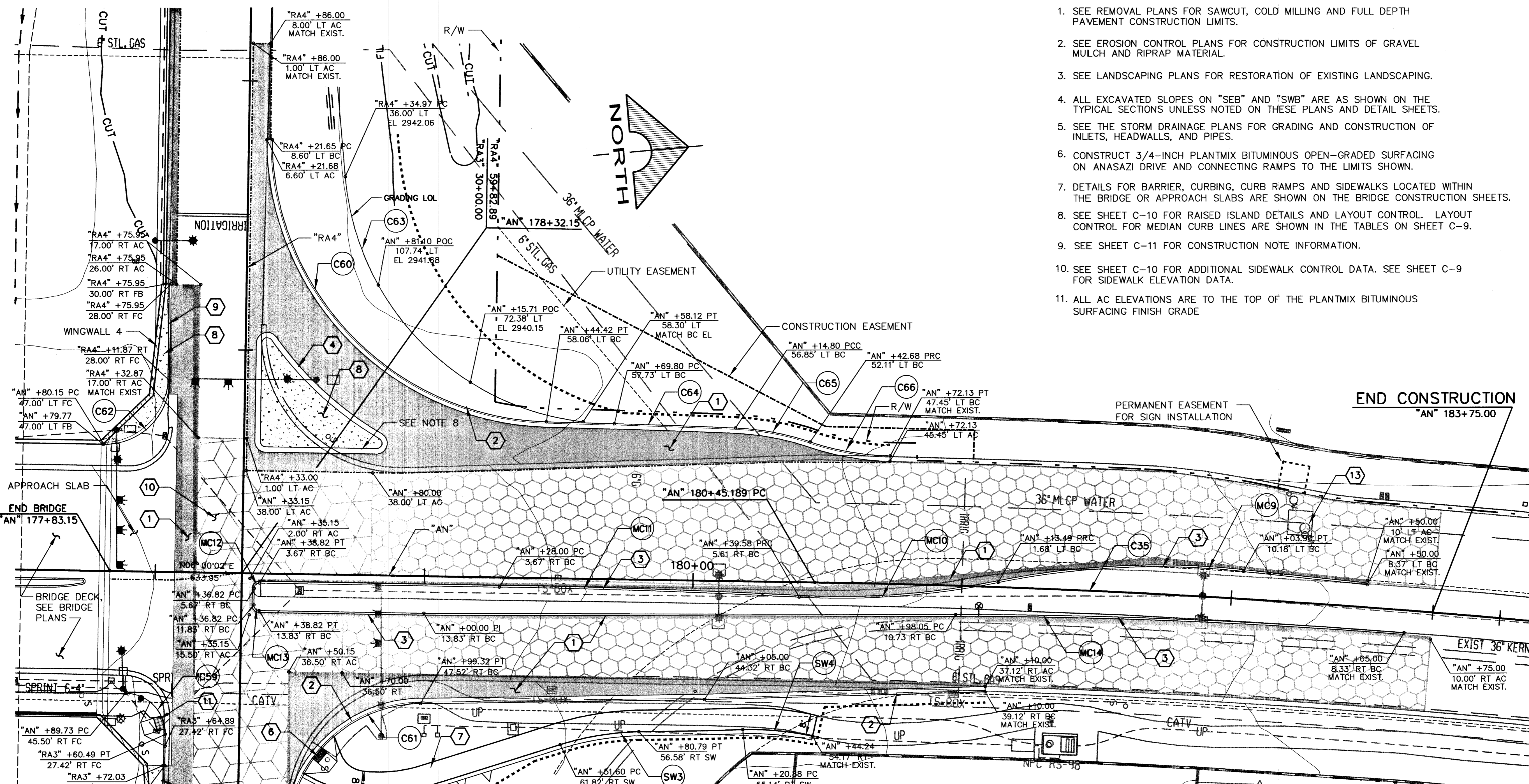
CITY OF LAS VEGAS, NEVADA  
 DEPARTMENT OF PUBLIC WORKS  
 400 E. STEWART ST., LAS VEGAS, NV 89101  
 (702) 225-6272

**PARSONS**  
 400 E. STEWART ST., LAS VEGAS, NV 89101  
 (702) 455-2616 FAX: (702) 455-8442

PROJECT: ANASAZI DRIVE OVERPASS  
 BID NO. 04.1730.05

DESCRIPTION: INTERSECTION DETAILS  
 "AN" 177+83.15 TO "AN" 183+75

DRAWING NO. 107V3690  
 SHEET C-8  
 25 OF 126



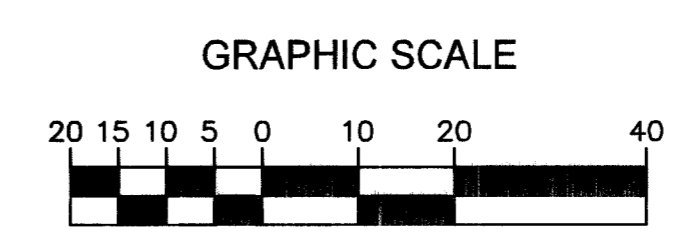
CONTROL CURVE DATA						P.I.	
CURVE	DESCRIPTION	DELTA	RADIUS	LENGTH	TANGENT	NORTHING	EASTING
C35	"AN"	17° 24' 41.7"	3500.00'	1063.61'	535.94'	526559.178	577099.835
C59	"AN"	89° 59' 57.7"	15.00'	23.56'	15.00'	525782.282	577063.921
C60	"AN"	88° 16' 26.8"	105.00'	161.77'	101.88'	525830.853	576963.592
C61	"AN"	75° 06' 43.4"	50.00'	65.55'	38.44'	525837.806	577072.964
C62	"AN"	90° 00' 07.0"	24.00'	37.70'	24.00'	525791.371	576971.868
C63	"AN"	78° 50' 14.4"	100.00'	137.60'	82.20'	525865.127	576949.401
C64	"AN"	0° 47' 17.3"	3272.00'	45.01'	22.50'	525979.587	576981.147
C65	"AN"	16° 15' 20.5"	100.00'	28.37'	14.28'	526016.057	576985.961
C66	"AN"	17° 22' 01.3"	100.00'	30.31'	15.27'	526043.104	576997.876
MC9	"AN"	17° 26' 16.8"	300.00'	91.31'	46.01'	526139.978	577044.958
MC10	"AN"	14° 12' 51.0"	300.00'	74.43'	37.40'	526057.056	577053.998
MC11	"AN"	1° 59' 30.6"	3210.33'	111.60'	55.81'	525964.749	577041.038
MC12	"AN"	90° 00' 02.3"	2.00'	3.14'	2.00'	525818.563	577025.671
MC13	"AN"	89° 59' 57.7"	2.00'	3.14'	2.00'	525817.500	577035.782
MC14	"AN"	4° 22' 54.4"	2177.67'	166.54'	83.31'	526160.385	577067.958
SW2	"AN"	28° 12' 49.0"	60.00'	29.55'	15.08'	525861.182	577109.758
SW3	"AN"	16° 14' 18.4"	105.00'	29.76'	14.98'	525941.273	577092.313
SW4	"AN"	13° 07' 12.8"	105.00'	24.04'	12.07'	526008.287	577096.94
SW5	"AN"	18° 08' 23.6"	50.00'	15.83'	7.98'	525839.007	577103.431

\* CURVE DATA FOR MEDIANS AND ISLANDS ARE NOTED AS MC# AND FOR SIDEWALKS AS SW#

**LEGEND**

- [Symbol] NEW FULL DEPTH PAVEMENT (SEE NOTES)
- [Symbol] COLD MILL AND OVERLAY (SEE NOTES)
- [Symbol] COLD MILL 3/4" OPEN GRADE
- [Symbol] HORIZONTAL CURVE NUMBER
- [Symbol] CONSTRUCTION NOTE NUMBER
- [Symbol] GRADING CONSTRUCTION LIMITS

*Robert Morgan*  
 LAS VEGAS VALLEY WATER DISTRICT  
 10/5/04  
 DATE



**Call before you Dig.**  
 1-800-227-2600

**Call before you Overhead.**  
 1-702-593-6111

**Call before you UnderGround.**  
 1-702-455-7511  
 1-702-229-8611

P0078641 09/24/2004 12:42:48 AM L:\projects\645545\design\Construction\545-c08.rvt 74787