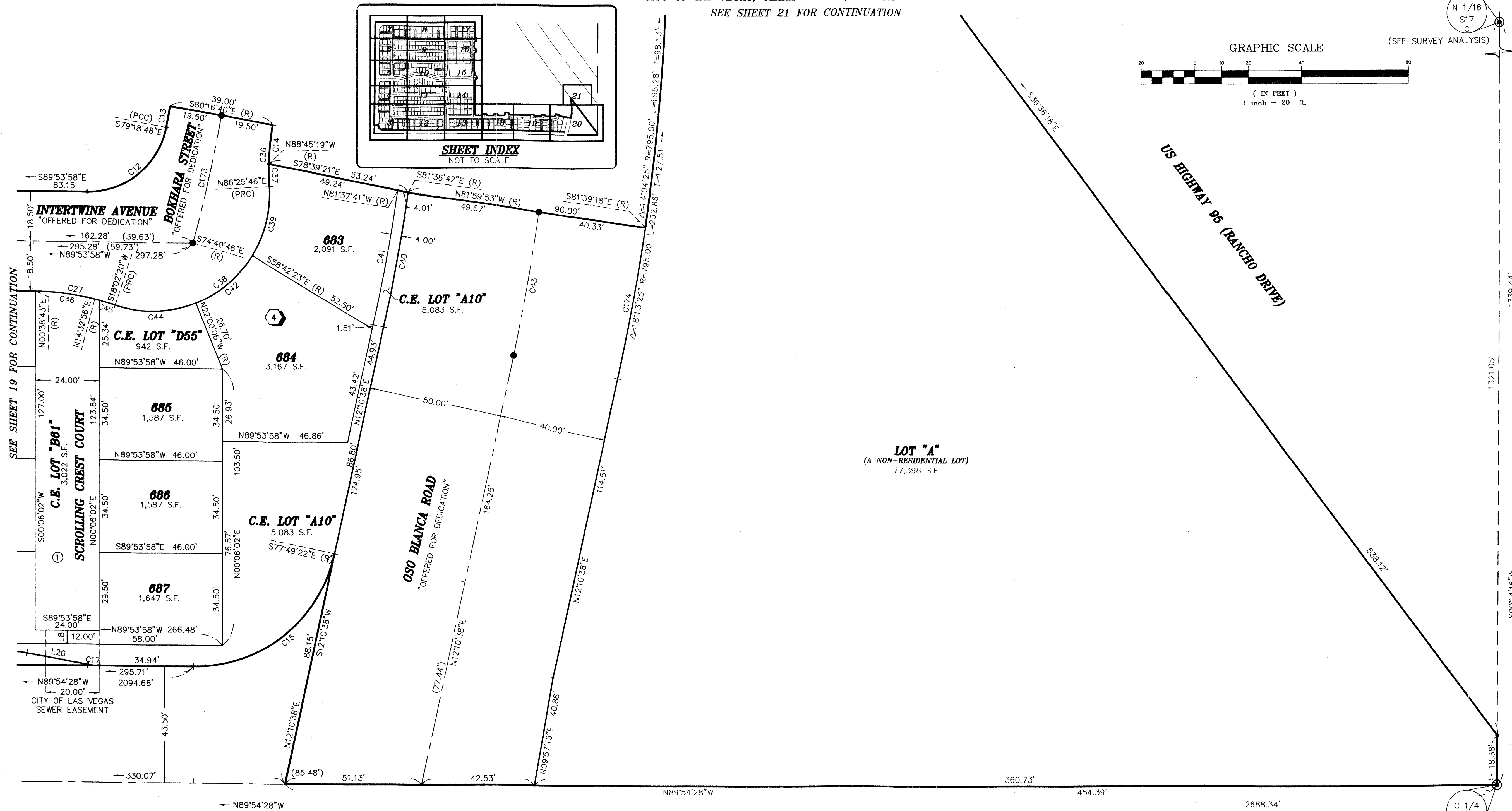
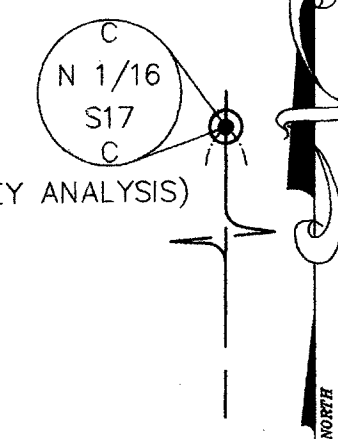
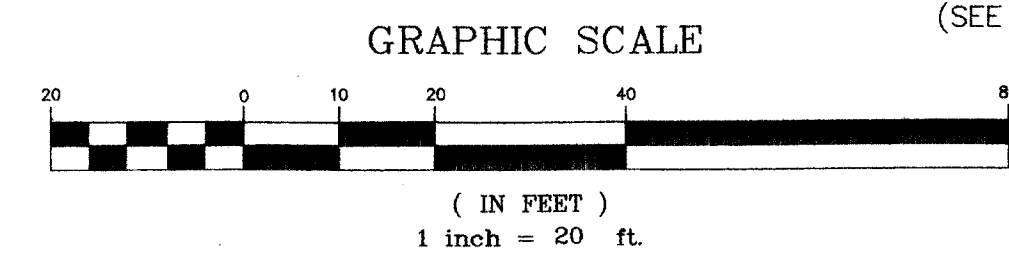
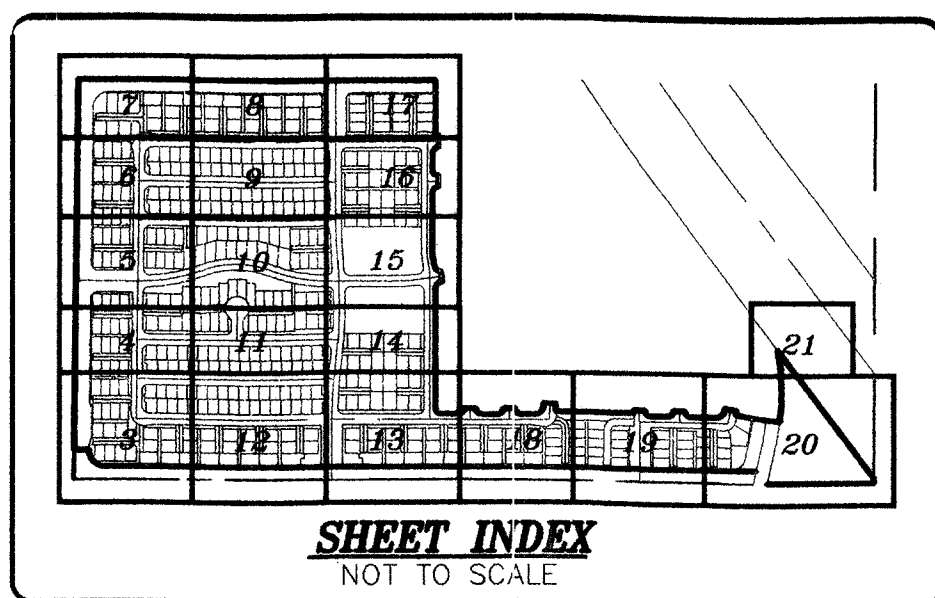


ASTORIA AT TOWN CENTER - NORTH - UNIT 1

(A COMMON INTEREST COMMUNITY)
BEING A SUBDIVISION OF A PORTION OF GOVERNMENT LOT 5 AND A PORTION OF GOVERNMENT LOT 6 OF SECTION 17, TOWNSHIP 19 SOUTH, RANGE 60 EAST, M.D.M.,
CITY OF LAS VEGAS, CLARK COUNTY, NEVADA.

SEE SHEET 21 FOR CONTINUATION



SEE SHEET 19 FOR CONTINUATION

1339.44'

1321.05'

S001416"W

C 1/4
S17

(SEE SURVEY ANALYSIS)

- NOTES:**
- ALL REAR LOT CORNERS SHALL BE SET WITH A NAIL AND BRASS TAG "VTN PLS 11449" ON BLOCK WALLS AND ALL FRONT OR SIDE LOT CORNERS, ADJOINING RIGHT-OF-WAY SHALL BE MARKED BY SAW CUTTING OF THE BACK OF CURBS ON THE PROLONGATION OF THE PROPERTY LINES.
 - DIRECT VEHICULAR ACCESS TO FARM ROAD, GILCREASE AVENUE, AND FORT APACHE ROAD THROUGH COMMON ELEMENT LOTS IS PROHIBITED.
 - SEE SHEET 21 FOR CURVE, COURSE, AND RADIAL TABLES.
 - NO WALLS, FENCES, TREES, SHRUBS, UTILITY APPURTENANCES OR ANY OTHER OBJECT OTHER THAN TRAFFIC CONTROL DEVICE AND STREET LIGHT POLES MAY BE CONSTRUCTED OR INSTALLED WITHIN THE SIGHT VISIBILITY RESTRICTION ZONE, UNLESS SAID OBJECT IS MAINTAINED AT LESS THAN TWENTY-FOUR INCHES (24") IN HEIGHT, MEASURED FROM TOP OF CURB, OR WHERE NO CURB EXISTS A HEIGHT OF TWENTY-SEVEN INCHES (27") MEASURED FROM TOP OF ADJACENT ASPHALT, GRAVEL, OR PAVEMENT STREET SURFACE. (TO BE PRIVATELY MAINTAINED BY THE H.O.A.)

| LEGEND | | BLOCK NUMBER | | H.O.A. | |
|---------|--|--------------|-------------------------------------|----------|---|
| --- | BOUNDARY LINE | 5 | LOT NUMBER / RESIDENTIAL LOTS = 447 | H.O.A. | HOMEOWNERS ASSOCIATION |
| - - - - | NDOT RIGHT-OF-WAY EASEMENT LINE | 415 | NON-RESIDENTIAL LOTS = 1 | | |
| --- | CENTERLINE | | COMMON LOTS = 154 | [Symbol] | LIMITED USE, COMMON ELEMENT LOTS TO BE PRIVATELY MAINTAINED BY H.O.A. |
| --- | RIGHT-OF-WAY LINE | | TOTAL LOTS = 602 | | |
| --- | RADIAL LINE | R15 | | [Symbol] | NOT A PART |
| --- | LOT LINE | C22 | | | |
| --- | QUARTER SECTION LINE | L13 | | | |
| ● | FOUND MONUMENT AS NOTED | S.F. | | | |
| ● | SET TYPE III MONUMENT - 5/8" REBAR AND AL. CAP STAMPED "VTN PLS 11449" WITH REFERENCE MONUMENTS IN TOP OF CURB | (PROD.) | | | |
| ● | SET NAIL AND BRASS TAG STAMPED "VTN PLS 11449" (SEE NOTE 1) | (R) | | | |
| | | (PRC) | | | |
| | | (PCC) | | | |
| | | C.E. | | | |
| | | APN | | | |
| | | N.A.P. | | | |

| ACT | DATE | BY | REVISION |
|-------|------|----|----------|
| 73053 | | | |

NOTE: SEE CONSTRUCTION PLANS FOR SIDEWALK/AMENITY ZONES NOT LOCATED WITHIN COMMON ELEMENT LOTS.

W.O. 6049-1
SHEET 20 OF 22
SP

4033
1/18/2025