

Avoid cutting underground utility lines. It's costly.

**Call before you Dig.**

1-800-227-2600

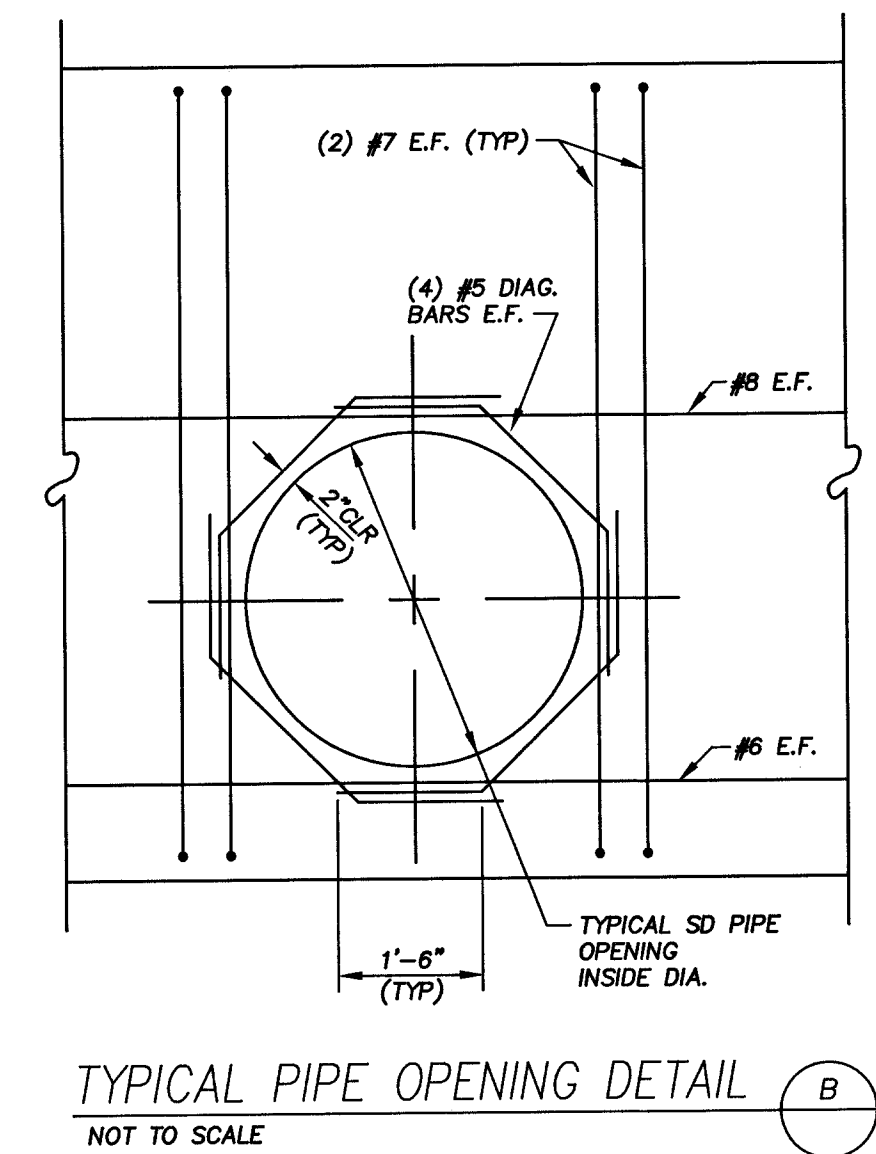
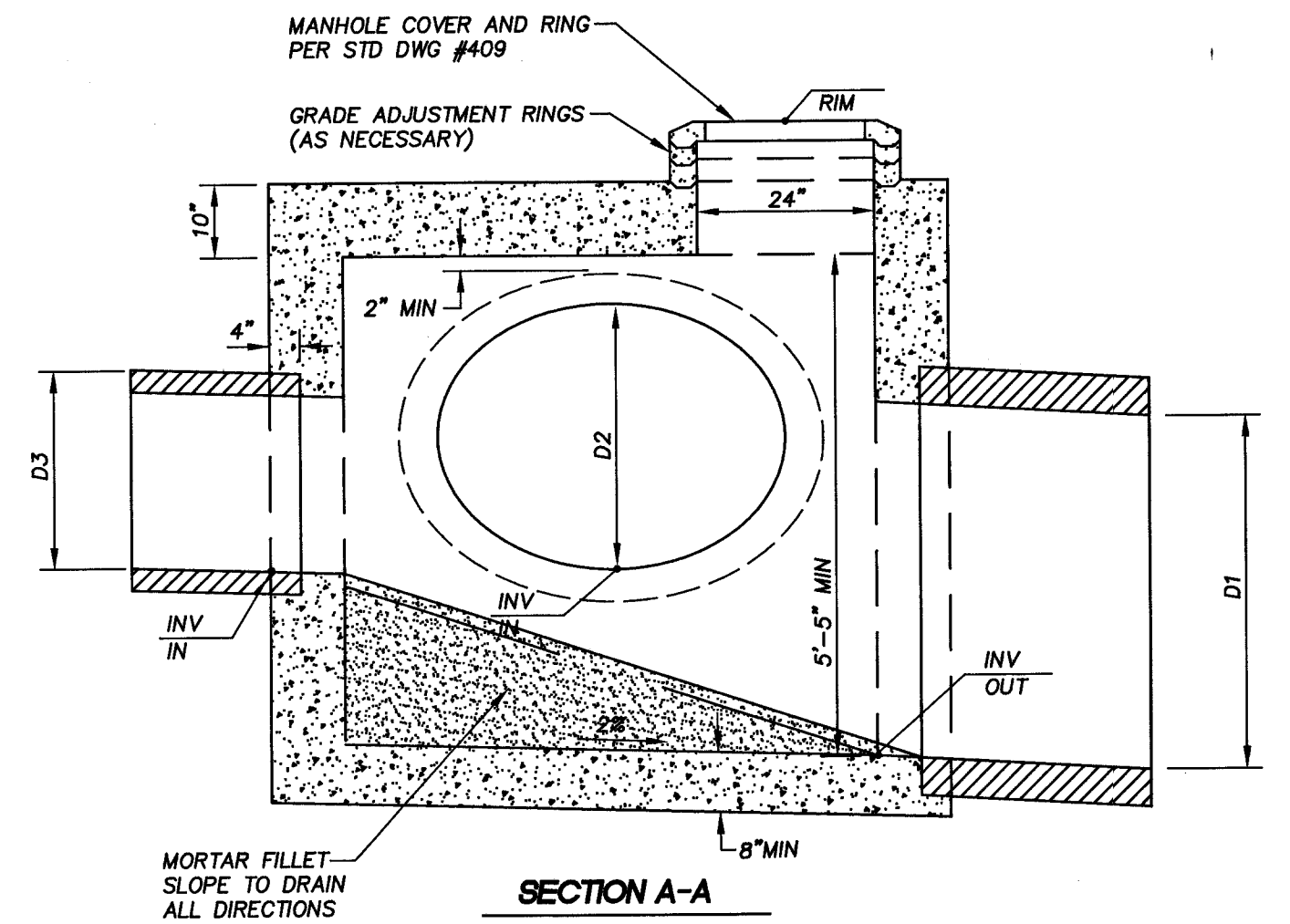
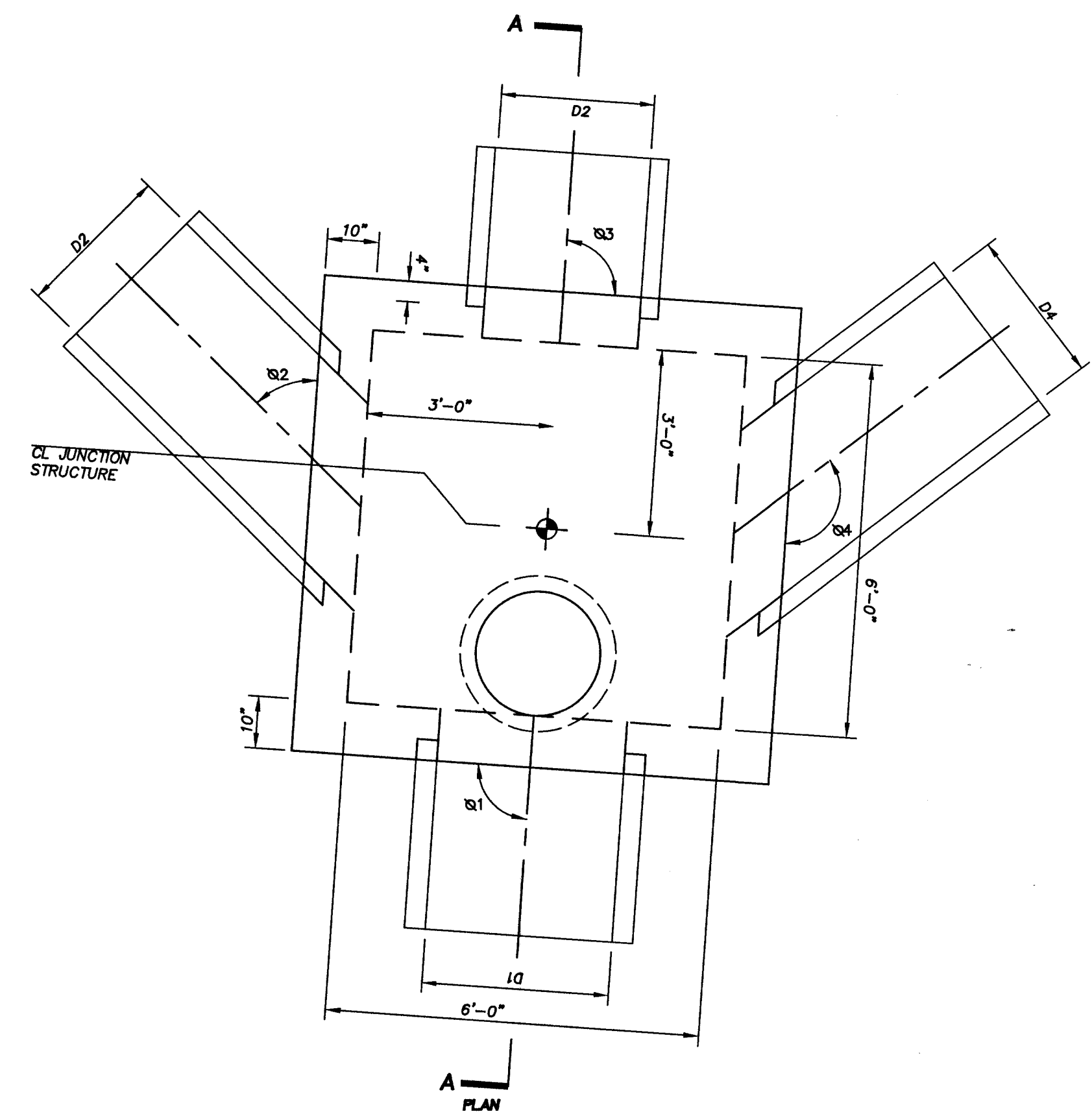
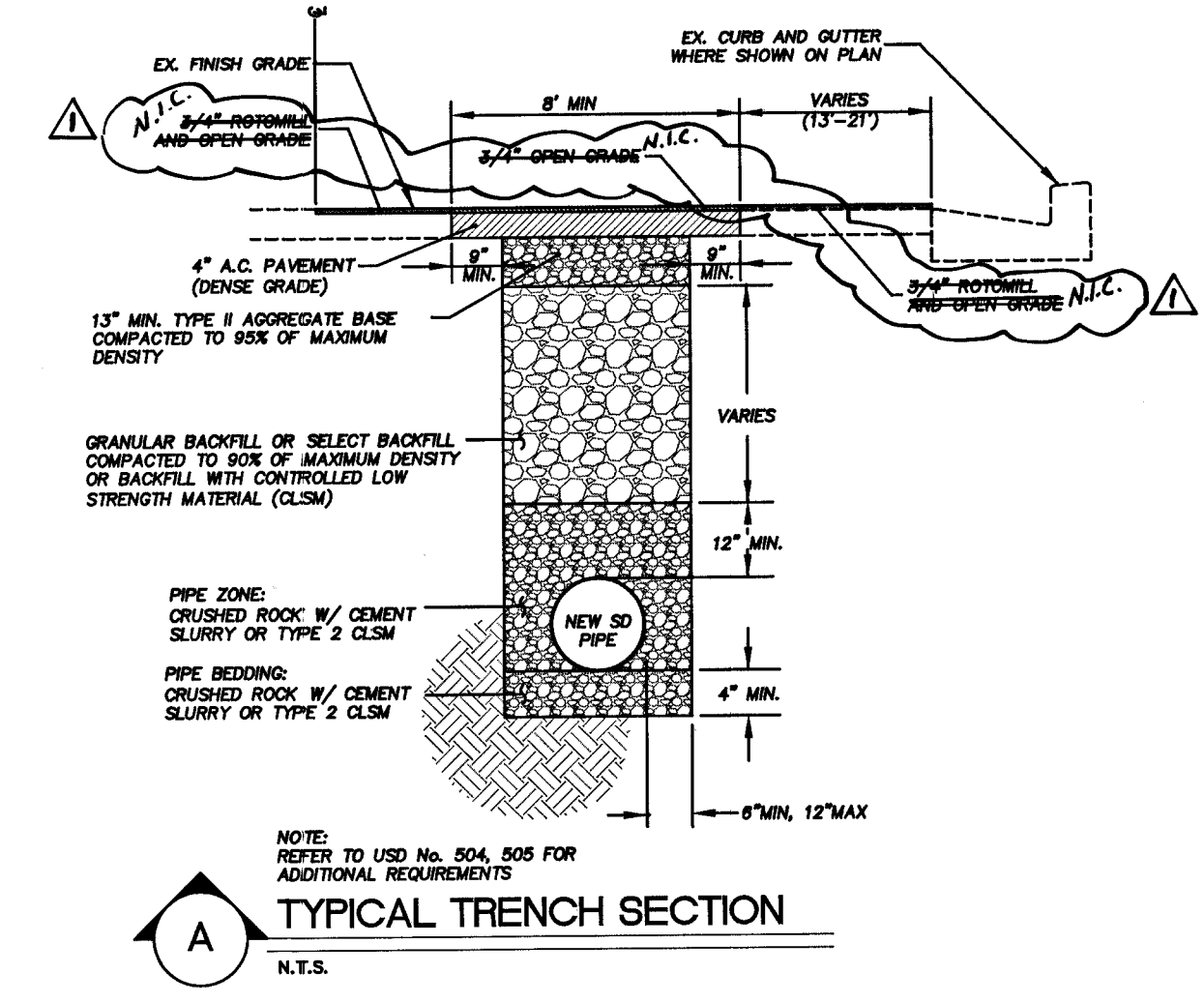
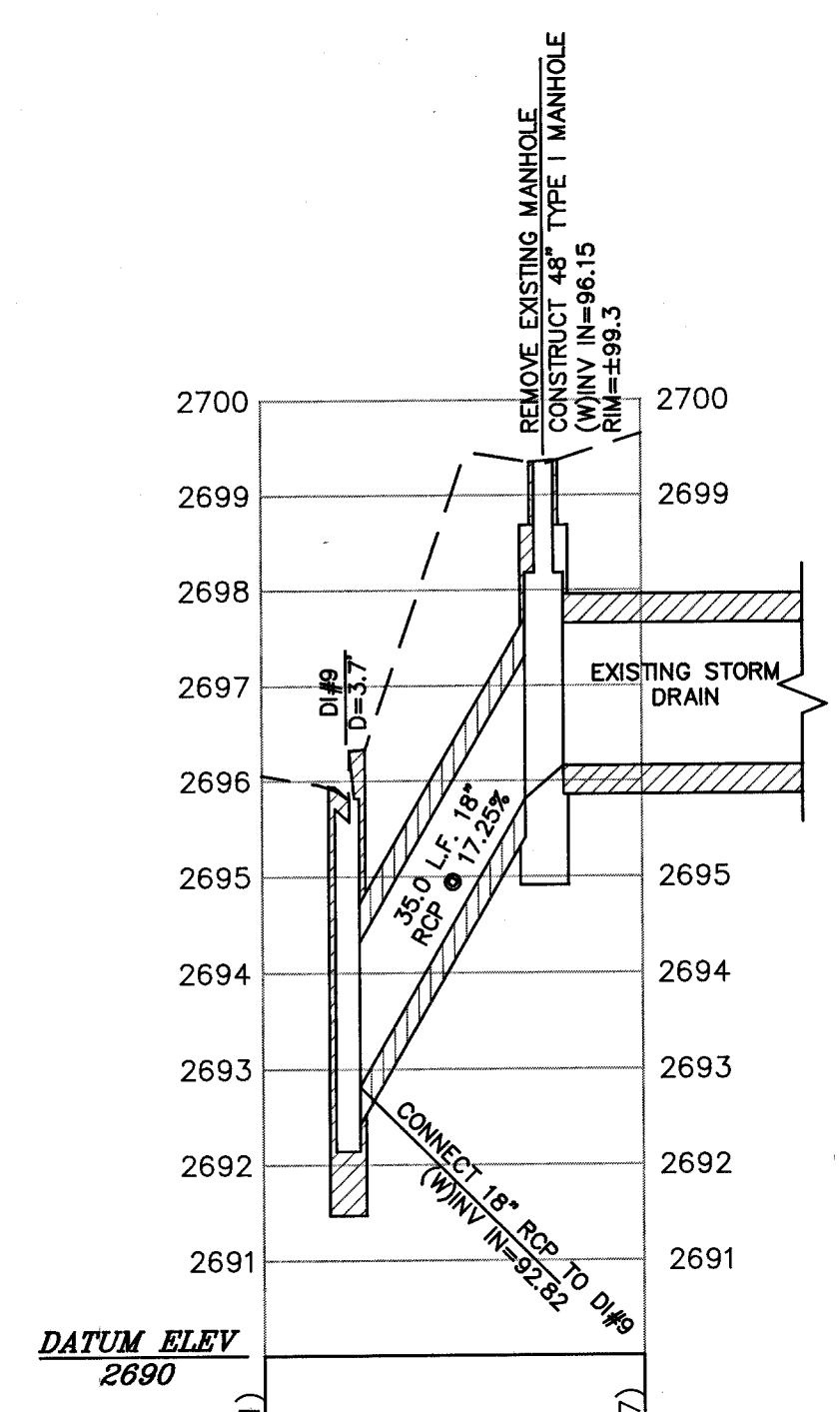
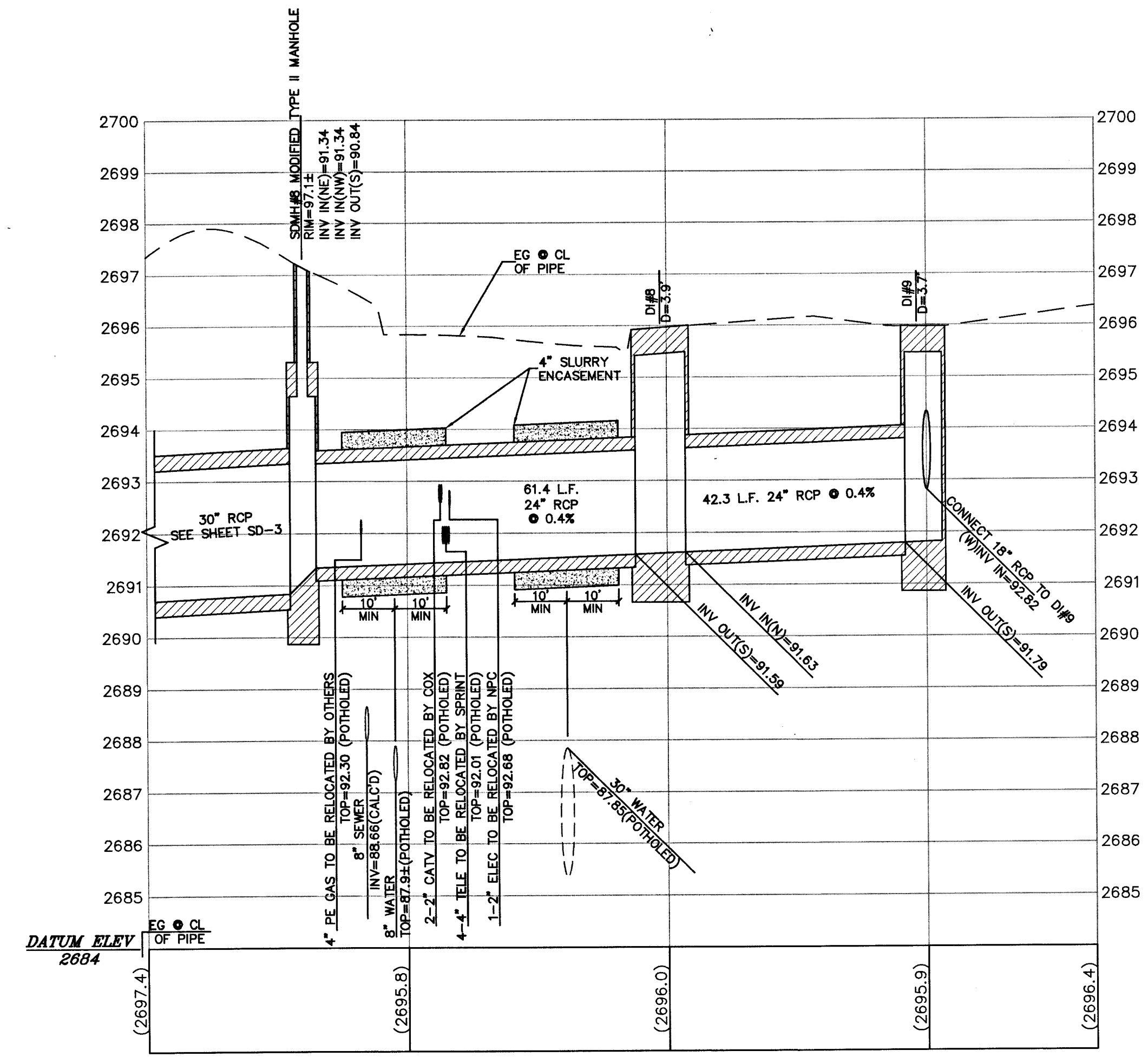
UNDERGROUND SERVICE ALERT (USA)

SAFETY ALERT

**Call before you Overhead**

593-6111

OVERHEAD SERVICE ALERT



**NOTES**

- REFER TO STD DWG #409 FOR STEEL REINFORCING AND ADDITIONAL DETAILS
- VERIFY EXISTING FINISH ROAD GRADES PRIOR TO CONSTRUCTION
- SEE DETAIL B THIS SHEET FOR REINFORCEMENT AT PIPE OPENING

**MODIFIED TYPE II MANHOLE (SPLIT FLOW)**

MANHOLE NUMBER STATION / OFFSET	D <sub>1</sub>			D <sub>2</sub>			D <sub>3</sub>			D <sub>4</sub>		
	PIPE SIZE (IN)	Ø	INV. ELEV.	PIPE SIZE (IN)	Ø	INV. ELEV.	PIPE SIZE (IN)	Ø	INV. ELEV.	PIPE SIZE (IN)	Ø	ELEV.
SDMH-7 STA. 23+13.77, 12.4' RT	36	90'00"	2688.31	30	49'00"	2688.76	30	90'00"	2688.82	18	125'38"	2688.7±
SDMH-8 STA. 23+93.89, 11.0' RT	30	106'20"	2690.84	24	48'12"	2691.34	24	90'00"	2691.34	NA	NA	NA
SDMH-9 STA. XX=93.89, 11.0' RT	30	95'10"	2691.44	18	46'45"	2692.03	30	75'30"	2691.64	18	137'47"	2692.7±

**UTILITY NOTE:**

UTILITY LOCATIONS SHOWN HEREIN ARE APPROXIMATE ONLY. IT SHALL BE THE CONTRACTOR'S RESPONSIBILITY TO DETERMINE THE EXACT VERTICAL AND HORIZONTAL LOCATION OF ALL EXISTING UNDERGROUND UTILITIES PRIOR TO COMMENCING CONSTRUCTION. NO REPRESENTATION IS MADE THAT ALL EXISTING UTILITIES ARE SHOWN HEREIN. THE ENGINEER ASSUMES NO RESPONSIBILITY FOR UTILITIES NOT SHOWN OR UTILITIES NOT SHOWN IN THEIR PROPER LOCATION.

REVISIONS

NO.	DATE	REVISION BY	DESCRIPTION
1	5/13	REVISION BY C.L.V.	

APP'D

**DEPARTMENT OF PUBLIC WORKS**

**ENGINEERING DESIGN SECTION**

CITY ENGINEER: CHARLES KAWONSKI JR., P.E.  
 PROJECT MANAGER: TOM HAYES, P.E.

DESIGNED BY: MAS  
 DRAWN BY: MAS  
 CHECKED BY: EGN

HORIZONTAL SCALE: 1"=30'  
 VERTICAL SCALE: 1"=2'

DATE: 04-04-03

**CRYSTAL WATER WAY**

**NOMINAL STORM DRAIN**

**LATERAL DETAILS**

**TRENCH/PATCH DETAILS**

TITLE: SHEET:

PROFESSIONAL ENGINEER

EDWARD C. ...

CIVIL

No. 8076

Sheet **SD-5**

9 of 10

DRAWING NO. 327-V119

**AS BUILT**

LVVWD

DATE

52056 73446