

Call before you Dig.  
1-800-227-2600  
UNDERGROUND SERVICE ALERT (USA)

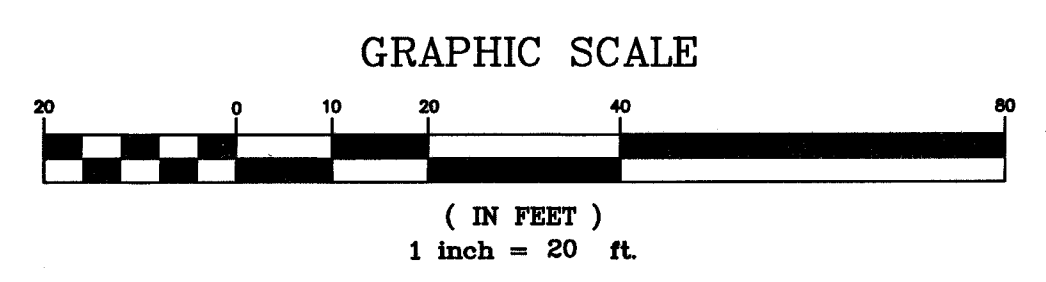
SAFETY ALERT  
Call before you Overhead  
593-6111  
OVERHEAD SERVICE ALERT

**BASIS OF BEARINGS**

Centerline of Desert Inn Road, being the South line of Southeast quarter of Section 8, Township 21 South, Range 80 East, M.D.M. Clark County Nevada, Bore N89°22'10"W, as shown on plat of the first map of "LAKE SHORE ESTATES NO.2 BY LEWIS HOMES", recorded in Book 35, Page 30 of Clark County, Nevada, Recorder's Office.

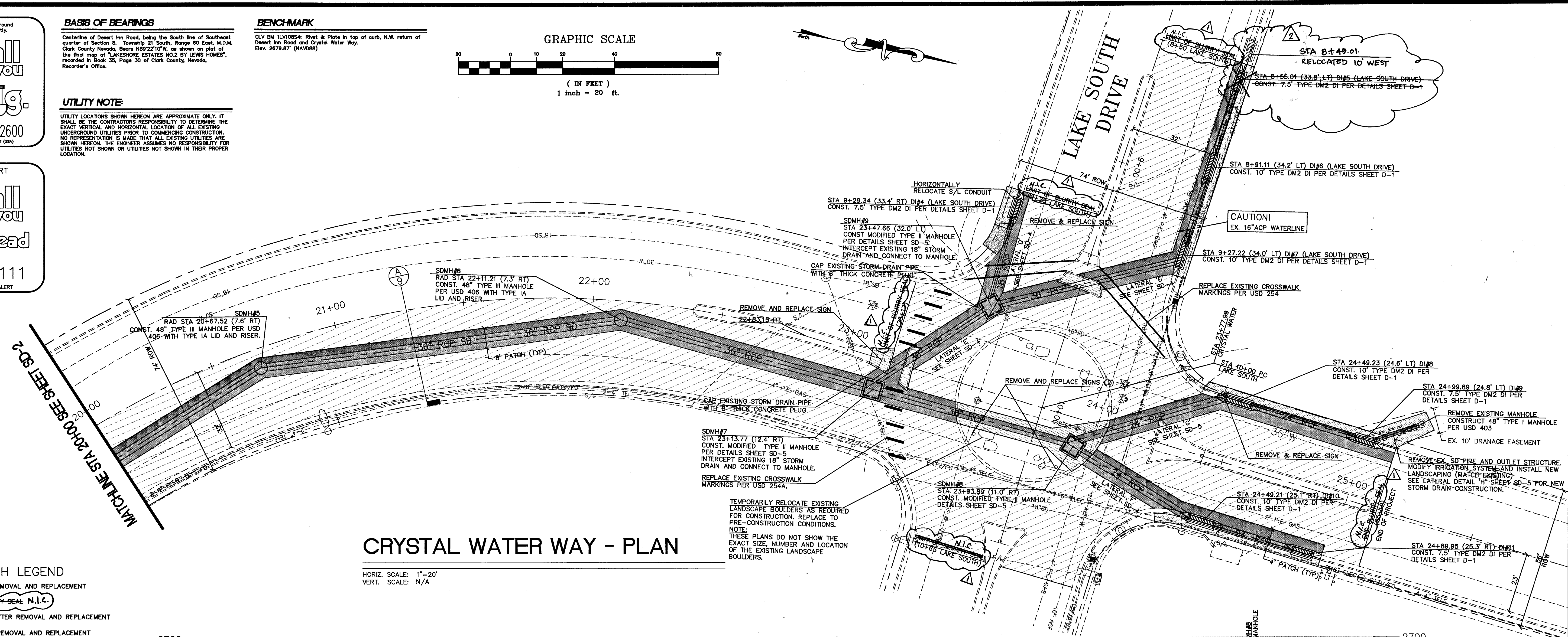
**BENCHMARK**

CLV BM 1L10084: Rivet & Plate in top of curb, N.W. return of Desert Inn Road and Crystal Water Way, Elev. 2879.87' (NAVD83)



**UTILITY NOTE**

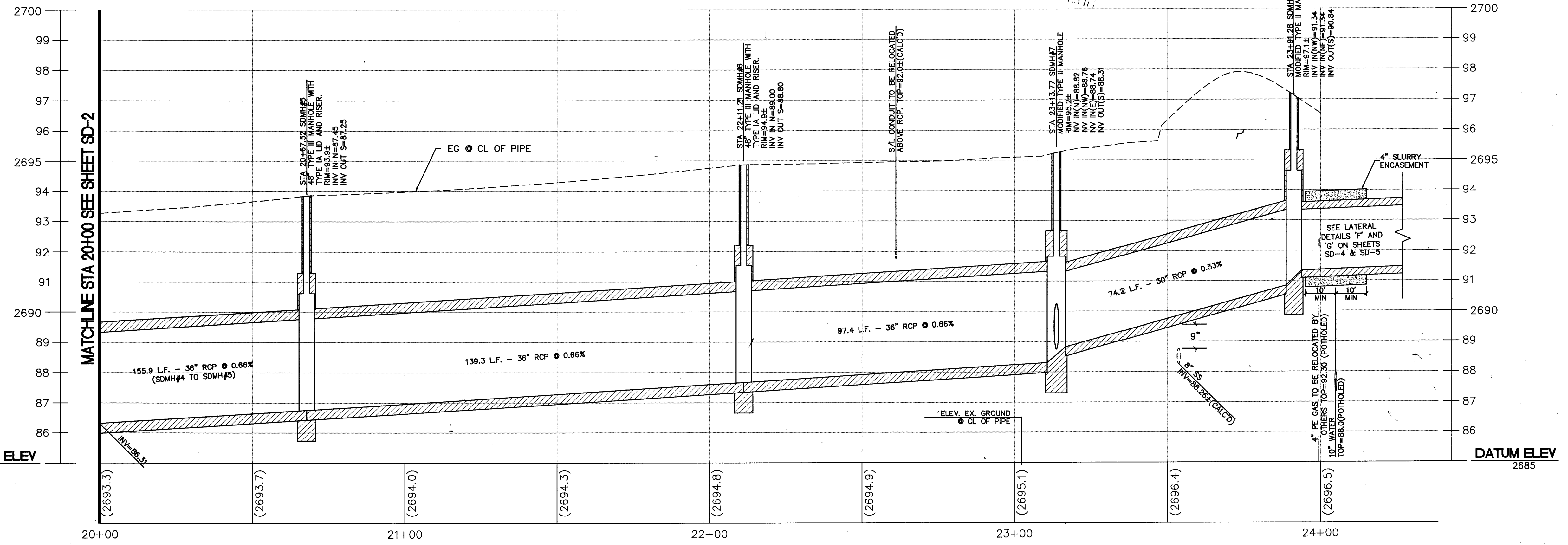
UTILITY LOCATIONS SHOWN HEREON ARE APPROXIMATE ONLY. IT SHALL BE THE CONTRACTOR'S RESPONSIBILITY TO DETERMINE THE EXACT VERTICAL AND HORIZONTAL LOCATION OF ALL EXISTING UNDERGROUND UTILITIES PRIOR TO COMMENCING CONSTRUCTION. NO REPRESENTATION IS MADE THAT ALL EXISTING UTILITIES ARE SHOWN HEREON. THE ENGINEER ASSUMES NO RESPONSIBILITY FOR UTILITIES NOT SHOWN OR UTILITIES NOT SHOWN IN THEIR PROPER LOCATION.



**CRYSTAL WATER WAY - PLAN**

HORIZ. SCALE: 1"=20'  
VERT. SCALE: N/A

- HATCH LEGEND**
- AC REMOVAL AND REPLACEMENT
  - SLURRY SEAL N.I.C.
  - X-GUTTER REMOVAL AND REPLACEMENT
  - S/W REMOVAL AND REPLACEMENT
  - MEDIAN REMOVAL AND REPLACEMENT. MATCH EXISTING MEDIAN COLOR, TEXTURE AND PAINT MARKINGS.
  - LANDSCAPE/IRRIGATION SYSTEM RELOCATION/RECONSTRUCTION



**CRYSTAL WATER WAY - PROFILE**

HORIZ. SCALE: 1"=20'  
VERT. SCALE: 1"=2'

REVISIONS

NO.	DATE	DESCRIPTION
1	9-29-04	AS-BUILT BY C.L.V.
2	5/13	REVISION BY C.L.V.

**DEPARTMENT OF PUBLIC WORKS**  
**ENGINEERING DESIGN SECTION**  
CITY ENGINEER: CHARLES KARKOWSKI, JR., P.E.  
PROJECT MANAGER: TOM HAYES, P.E.  
DESIGNED BY: WAS  
DRAWN BY: WAS  
CHECKED BY: ECN  
HORIZONTAL SCALE: 1"=20'  
VERTICAL SCALE: 1"=2'  
DATE: 04-04-03

**CRYSTAL WATER WAY**  
**NOMINAL STORM DRAIN**  
**PLAN AND PROFILE**  
**STA 20+00 TO STA 25+00**

TITLE: SHEET:  
EDWARD J. METZ ENGINEERING  
Professional Engineer  
No. 172107

Sheet **SD-3**  
7 of 10  
DRAWING NO. 327-V19

52054 73444

AS-BUILT  
L.V.V.D.  
DATE 4/21/05