

Avoid cutting underground utility lines. It's costly.

Call before you Dig.

1-800-227-2600
UNDERGROUND SERVICE ALERT (USA)

SAFETY ALERT

Call before you Overhead

593-6111
OVERHEAD SERVICE ALERT

BASIS OF BEARINGS

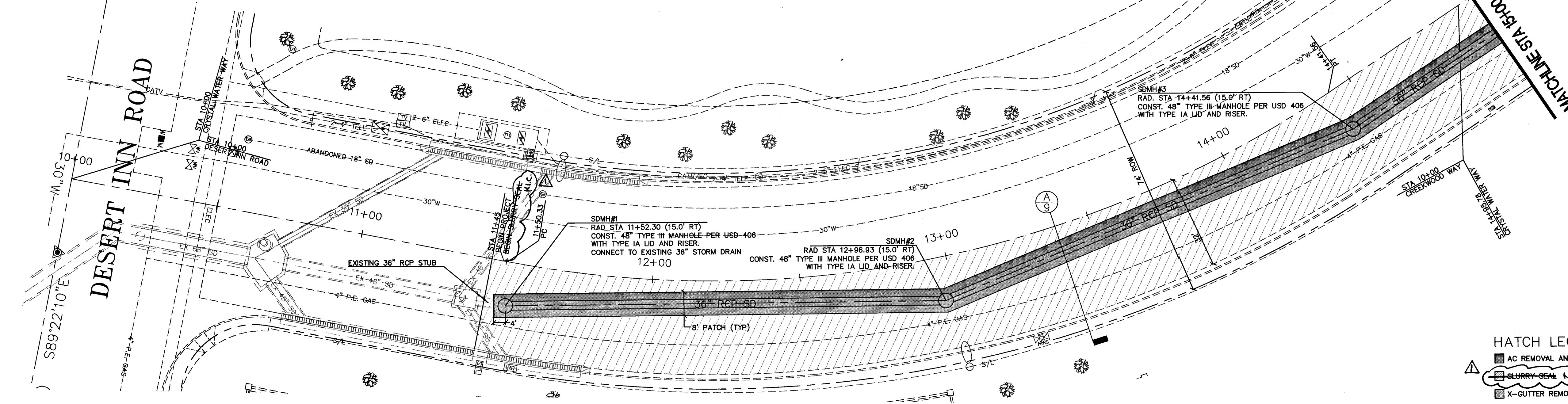
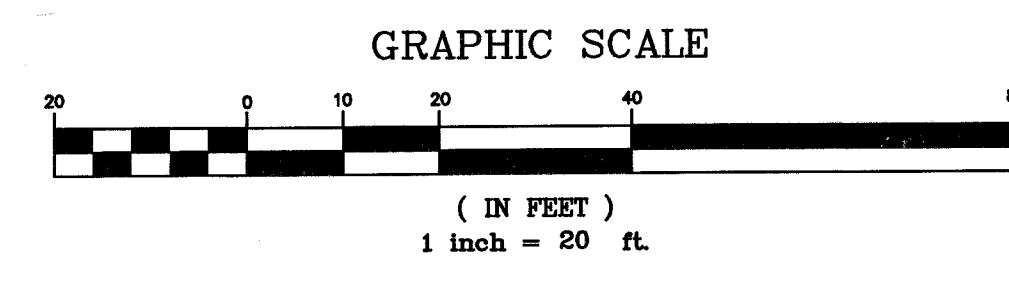
Centerline of Desert Inn Road, being the South line of Southeast quarter of Section 8, Township 21 South, Range 60 East, M.D.M. Clark County Nevada, Bears N89°22'10"W, as shown on plot of the final map of "LAKEVIEW ESTATES NO. 2 BY LEWIS HOMES", recorded in Book 35, Page 30 of Clark County, Nevada, Recorder's Office.

BENCHMARK

CLV BM 1LV10884C Rivet & Plate in top of curb, N.W. return of Desert Inn Road and Crystal Water Way, Elev. 2879.87 (NAVD88)

UTILITY NOTE:

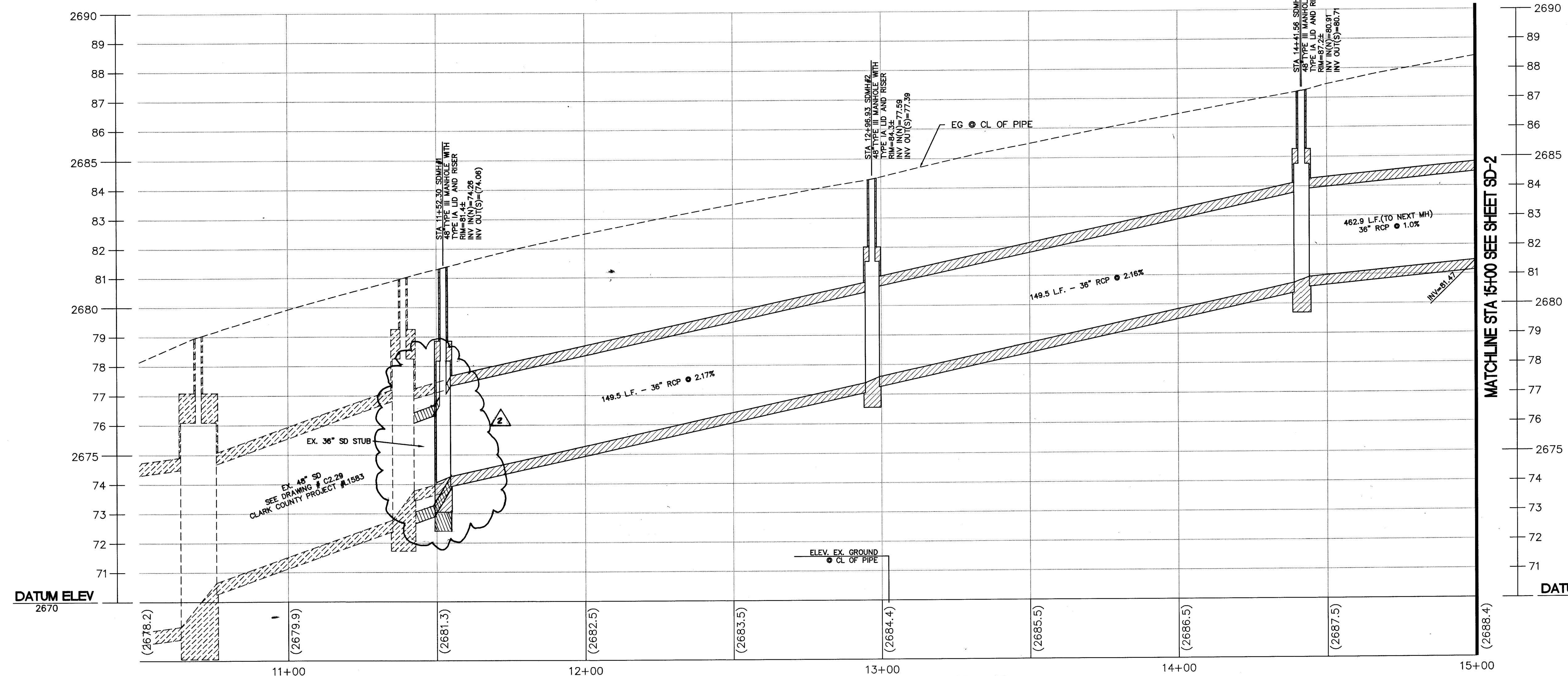
UTILITY LOCATIONS SHOWN HEREON ARE APPROXIMATE ONLY. IT SHALL BE THE CONTRACTOR'S RESPONSIBILITY TO DETERMINE THE EXACT VERTICAL AND HORIZONTAL LOCATION OF ALL EXISTING UNDERGROUND UTILITIES PRIOR TO COMMENCING CONSTRUCTION. NO REPRESENTATION IS MADE THAT ALL EXISTING UTILITIES ARE SHOWN HEREON. THE ENGINEER ASSUMES NO RESPONSIBILITY FOR UTILITIES NOT SHOWN OR UTILITIES NOT SHOWN IN THEIR PROPER LOCATION.



CRYSTAL WATER WAY - PLAN

HORIZ. SCALE: 1"=20'
VERT. SCALE: N/A

- HATCH LEGEND**
- AC REMOVAL AND REPLACEMENT
 - SLURRY SEAL, N.I.C.
 - X-GUTTER REMOVAL AND REPLACEMENT
 - S/W REMOVAL AND REPLACEMENT
 - MEDIAN REMOVAL AND REPLACEMENT. MATCH EXISTING MEDIAN COLOR, TEXTURE AND PAINT MARKINGS.
 - LANDSCAPE/IRRIGATION SYSTEM



CRYSTAL WATER WAY - PROFILE

HORIZ. SCALE: 1"=20'
VERT. SCALE: 1"=2'

APPROVED FOR CONSTRUCTION

[Signature] *[Signature]*

1 as Vasek Village Water District Date 05/13/03

NO.	DATE	DESCRIPTION
1	5/13	REVISION BY C.L.V.
2	5/13	REVISION BY C.L.V.

DEPARTMENT OF PUBLIC WORKS

ENGINEERING DESIGN SECTION

CITY ENGINEER: CHARLES KAKOWSKI, JR., P.E.
PROGRAM MANAGER: TOM HAYES, P.E.

DESIGNED BY: MAS
DRAWN BY: MAS
CHECKED BY: EON

HORIZONTAL SCALE: 1"=20'
VERTICAL SCALE: 1"=2'
DATE: 04-04-03

CRYSTAL WATER WAY

NOMINAL STORM DRAIN

PLAN AND PROFILE

STA 10+00 TO 15+00

APPROVED FOR CONSTRUCTION

[Signature] *[Signature]*

1 as Vasek Village Water District Date 05/13/03

Sheet **SD-1**

5 of 10

DRAWING NO. 327-V119

AS BUILT

S2052 73442