

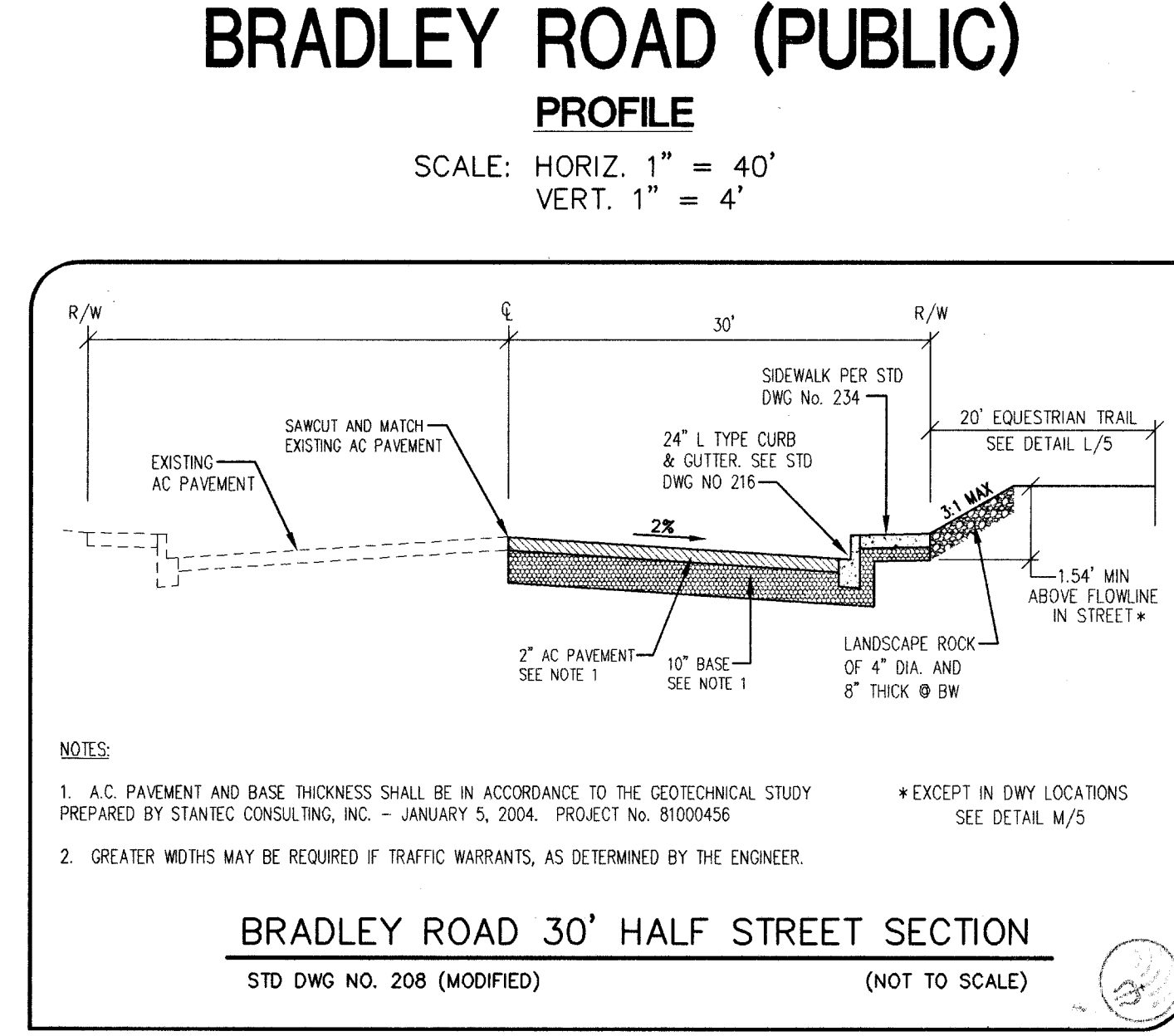
BASIS OF BEARING
 THE BASIS OF BEARINGS FOR THIS SURVEY NORTH 07°52'43" WEST, BEING THE BEARING FROM CONTINUOUSLY OPERATING REFERENCE STATION (CORS) "LVWV" AND THE SOUTH QUARTER CORNER OF SECTION 12, TOWNSHIP 19 SOUTH, RANGE 60 EAST, M.D.M., COUNTY OF CLARK, STATE OF NEVADA, AS DETERMINED BY STATIC GLOBAL POSITIONING SYSTEM (GPS) MEASUREMENTS PROCESSED BY THE NATIONAL GEODETIC SURVEY DIVISION OF THE NATIONAL OCEANIC AND ATMOSPHERIC ADMINISTRATION USING THE ON-LINE POSITIONING USER SERVICE (OPUS). THE REFERENCE FRAME USED WAS NAD83 (CORS86) WITH AN EPOCH OF 2002.0000. ALL DISTANCES SHOWN HEREON ARE GROUND VALUES.

BENCHMARK
 CITY OF LAS VEGAS VERTICAL CONTROL POINT "SLV90 1254", BEING A RIVET AND PLATE IN CONCRETE PAD (ELEC) @ NE CORNER OF GRAND TETON & BRADLEY.
 ELEVATION: 2347.34 (FEET)
 715.4708 (METERS)
 CITY OF LAS VEGAS VERTICAL CONTROL DATED JUNE 3, 2002, BASED ON NORTH AMERICAN VERTICAL DATUM OF 1988 (NAVD 88).

SIDEWALK RAMP TRANSITION TABLE

RAMP NO.	GRADE (%)	"A" (FT) MIN.	"B" (FT) MIN.
H1	-6 TO -5.01	4.5	21.5
H2	-5 TO -4.01	4.5	15.0
H3	-4 TO -3.01	4.5	12.0
H4	-3 TO -2.01	4.5	9.5
H5	-2 TO 2	8.0	8.0
H6	2.01 TO 3	9.5	4.5
H7	3.01 TO 4	12.0	4.5
H8	4.01 TO 5	15.0	4.5
H9	5.01 TO 6	21.5	4.5

SEE CLARK COUNTY AREA STANDARD DRAWING NO. 235 CASE I



BACK OF CURB - CURVE TABLE

CURVE	LENGTH	RADIUS	DELTA	TANGENT
C1	198.91	40.50	281°24'25"	33.14
C2	198.91	40.50	281°24'25"	33.14
C3	17.26	19.50	50°42'13"	8.24
C4	17.26	19.50	50°42'13"	8.24
C5	17.26	19.50	50°42'13"	8.24
C6	32.61	20.00	93°26'06"	21.24
C7	31.42	20.00	90°00'00"	20.00
C8	17.26	19.50	50°42'13"	8.24
C9	30.11	20.00	88°16'21"	18.74
C10	31.42	20.00	90°00'00"	20.00
C11	31.42	20.00	90°00'00"	20.00
C12	31.42	20.00	90°00'00"	20.00

AVOID HITTING UNDERGROUND TRAFFIC SIGNAL SYSTEMS AND STREET LIGHT SYSTEM CONDUITS IT'S COSTLY

CALL BEFORE YOU DO UNDERGROUND

CALL BEFORE YOU DO UNDERGROUND

1-702-455-7511
 CLARK COUNTY TRAFFIC OPERATIONS

AND

1-702-229-6611
 LAS VEGAS AREA COMPUTERIZED TRAFFIC SYSTEM

Avoid hitting overhead power lines. It's costly.

Call before you do Overhead

1-702-593-6111

Avoid cutting underground utility lines. It's costly.

Call before you Dig.

1-800-227-2600

UNDERGROUND SERVICE ALERT (USA)

- CONSTRUCTION NOTES**
- CONSTRUCT SIDEWALK PER STD DWG #234
 - CONSTRUCT TYPE "L" CURB & GUTTER PER STD DWG #216
 - CONSTRUCT VALLEY GUTTER PER STD DWG #228
 - CONSTRUCT HANDICAP RAMP PER STANDARD DWG #235 CASE I - SEE SW RAMP TRANSITION TABLE
 - CONSTRUCT ROLL TYPE CURB PER STD DWG #217A

DATE: MARCH 10, 2004
 PM: K. WITWER
 DRAWN BY:
 DESIGNED BY:
 CHECKED BY:
 ADA CHECKED:
 JOB NO.: 004-002
 SCALE: 1" = 40'

Triton Engineering
 Office: (702) 254-480
 State 170
 Las Vegas, Nevada 89144
 www.tritoneng.com

SIGNATURE HOMES
 BRADLEY / RACEL

BRADLEY ROAD
 PLAN AND PROFILE

SHEET **6** OF 13
 C.L.V. DWG.# 7416

1074839