

Seal



Consultants

IRRIGATION:  
ACI  
120 W. Grand Ave., Suite 201  
Escondido, CA 92025  
760-743-4549

Date JULY 28, 2004

Revisions

Project

**TOWN CENTER NORTH**  
**EXTERIOR**  
**STREETSCAPES & ENTRIES**

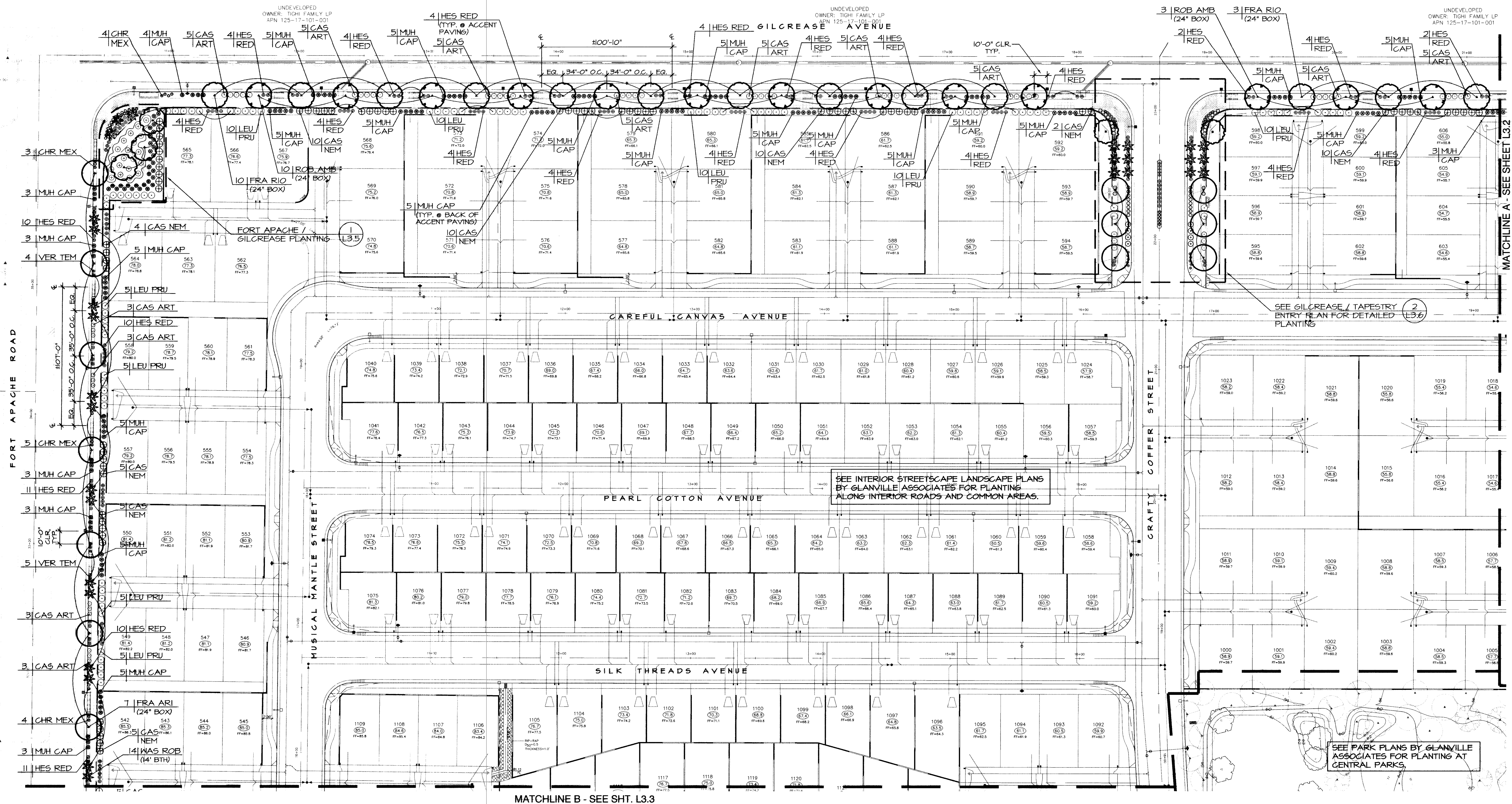
ASTORIA HOMES LAS VEGAS, NV

Drawing Title

**PLANTING PLAN**

Sheet Number

**L3.1**  
10744833-LS  
Of Sheets



**ROOT BARRIER:**  
INSTALL MIN. 10' LONG SECTION OF 18" DEEP ROOT BARRIER FOR ALL TREES WITHIN 4' OF WALKS. SEE DETAIL SHT. L3.7.

**TREE NOTES:**  
ALL THORN ARE TO BE REMOVED ON TREE BRANCHES BELOW 8' IN HEIGHT; THIS APPLIES ONLY TO TREES WITHIN 15' OF ROADWAYS, WALKWAYS OR PLAY AREAS.  
MIN. 6' CLR. HT. FOR UPRIGHT TREES, MIN. 10' CLR. HT. FOR SPREADING TREES AT ALL WALLS AND BUILDINGS.

- NOTES:**
- ALL PLANTING AREAS AT ENTRIES TO BE COVERED W/ 2" DEPTH GRAVEL MULCH: 3/4" SCREENED VISTA GOLD' (VISTA LANDSCAPE, 102-565-6611) OR 'MOJAVE GOLD' (KALAMAZOO MATERIALS, 102-246-4135), TYP.
  - ALL EXTERIOR STREETSCAPE PLANTING AREAS TO BE COVERED W/ 6" DEPTH GRAVEL MULCH: 3"-5" SCREENED 'MOJAVE GOLD' (KALAMAZOO MATERIALS, 102-246-4135), TYP.
  - ALL STREETSCAPE LANDSCAPE AREAS TO HAVE POSITIVE DRAINAGE TO STREETS (2% MIN), PER VTN DRAWINGS
  - GLANVILLE ASSOC. TO SUPPLY CAD FILES TO CONTRACTOR UPON REQUEST FOR LAYOUT OF STREETSCAPE AMENITIES

