

BENCHMARKS
 PROJECT DATUM : NORTH AMERICAN VERTICAL DATUM OF 1988 (NAVD88)
 CLARK COUNTY BENCHMARK : OC9017N6
 ELEVATION : 799.0857 METERS (2621.67 FEET)
 RIVET AND SQUARE ALUMINUM PLATE IN TOP CENTER OF HEADWALL ON THE WEST SIDE OF U.S. 95 NEAR MILE MARKER 90.15.

BASIS OF BEARINGS
 NORTH 00°37'42" EAST, BEING THE BEARING OF THE WEST LINE OF THE SOUTHWEST QUARTER (SW 1/4) OF THE NORTHWEST QUARTER (NW 1/4) OF SECTION 17, TOWNSHIP 19 SOUTH, RANGE 60 EAST, M.D.M., CLARK COUNTY, NEVADA, AS SHOWN ON A RECORD OF SURVEY ON FILE IN THE CLARK COUNTY, NEVADA, RECORDER'S OFFICE, IN FILE 114 OF SURVEYS, AT PAGE 57.

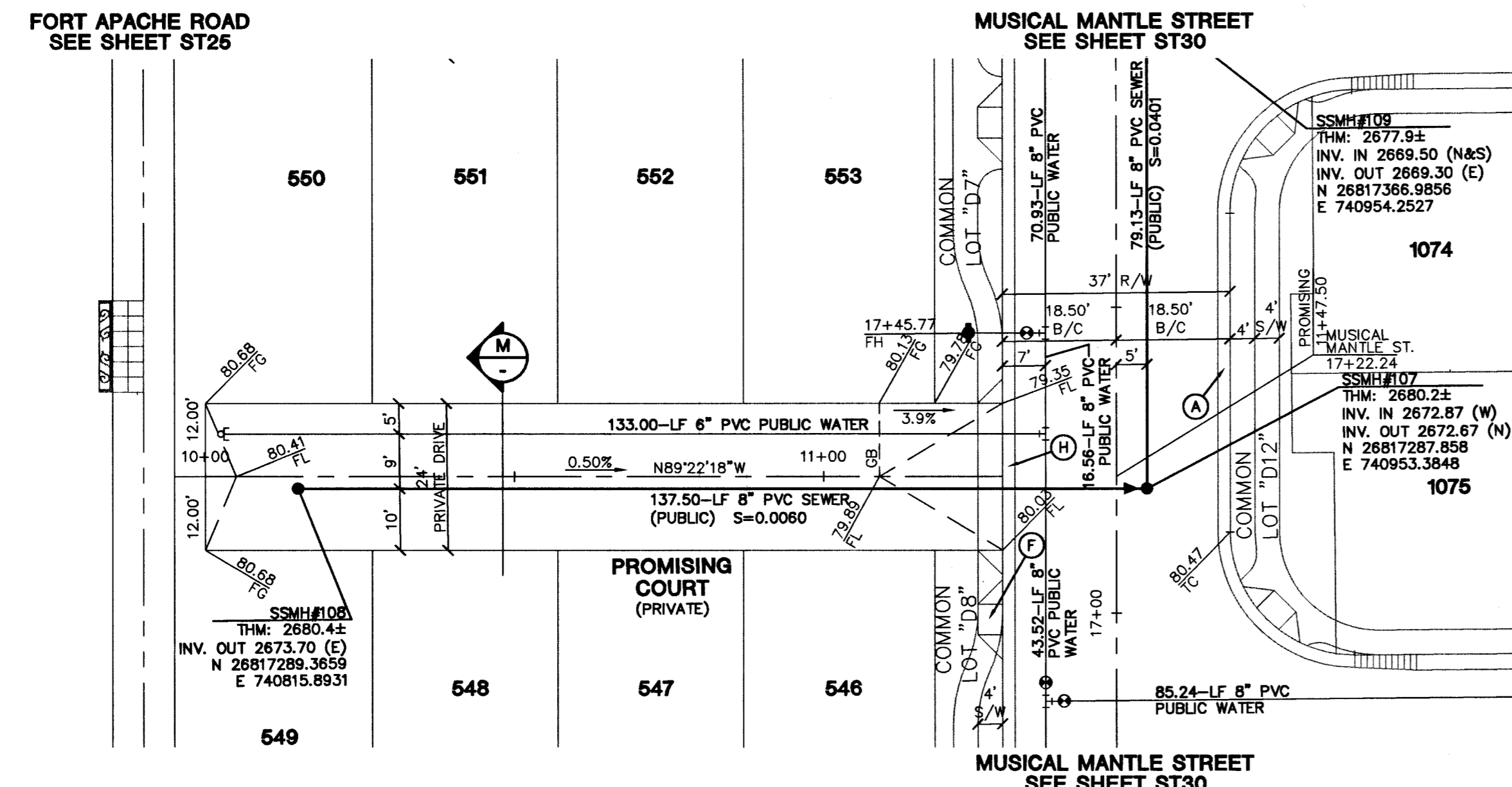
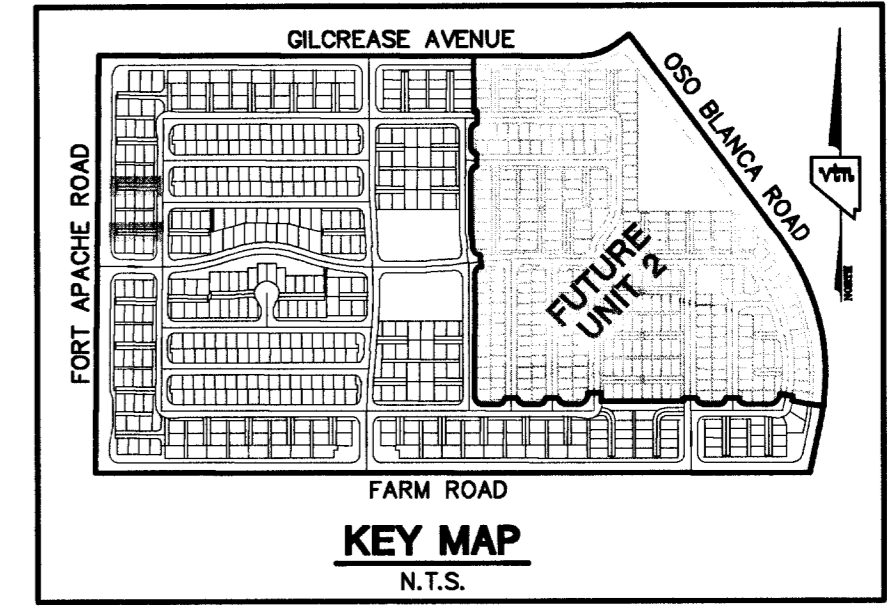
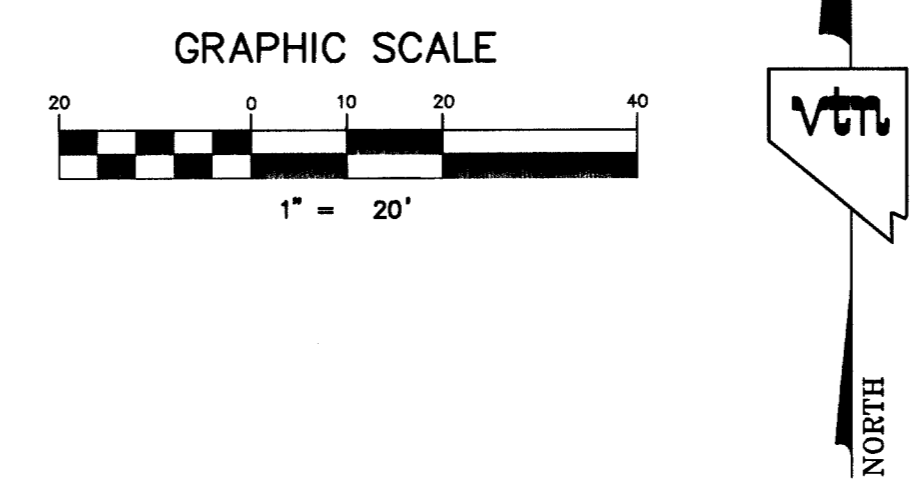
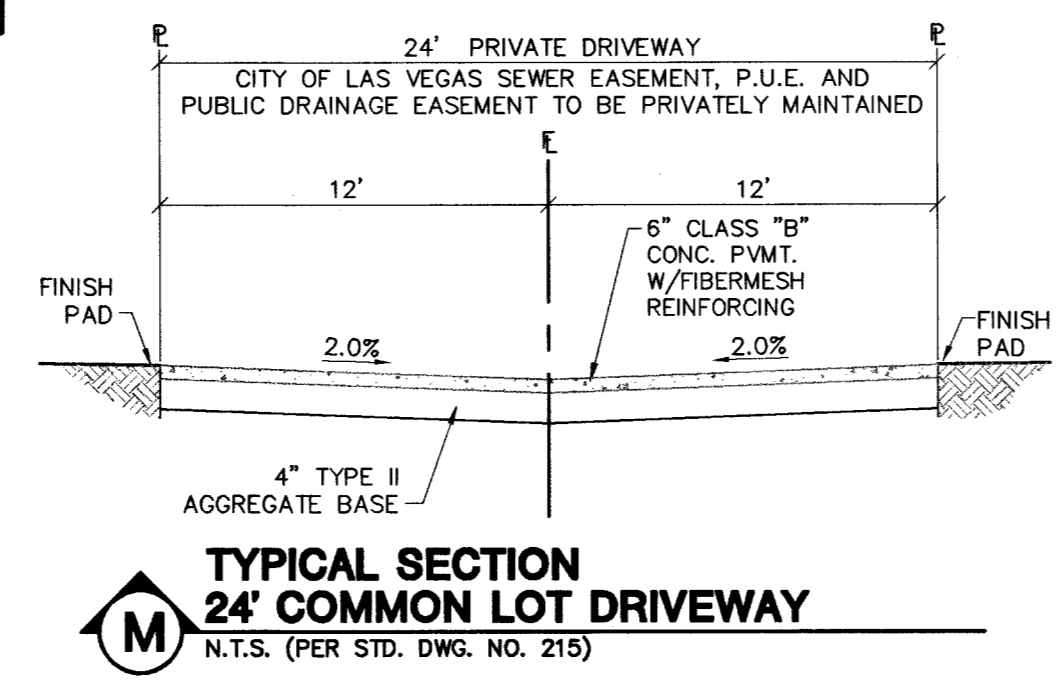
CONTRACTOR NOTE
 CONTRACTOR SHALL VERIFY HORIZONTAL AND VERTICAL LOCATION OF EXISTING UTILITIES AND NOTIFY THE DESIGN ENGINEER IMMEDIATELY OF ANY DISCREPANCIES PRIOR TO CONSTRUCTION.

CONSTRUCTION NOTES
 (A) CONSTRUCT 24" "L" TYPE CURB & GUTTER PER STD. DWG. NO. 216
 (E) CONSTRUCT CONCRETE SIDEWALK PER STD. DWG. NO. 234
 (F) CONSTRUCT SIDEWALK RAMP (CASE I) PER STD. DWG. NO. 235
 (H) CONSTRUCT 24" DEPRESSED CURB SECTION PER DETAIL "KK" ON SHEET DT1

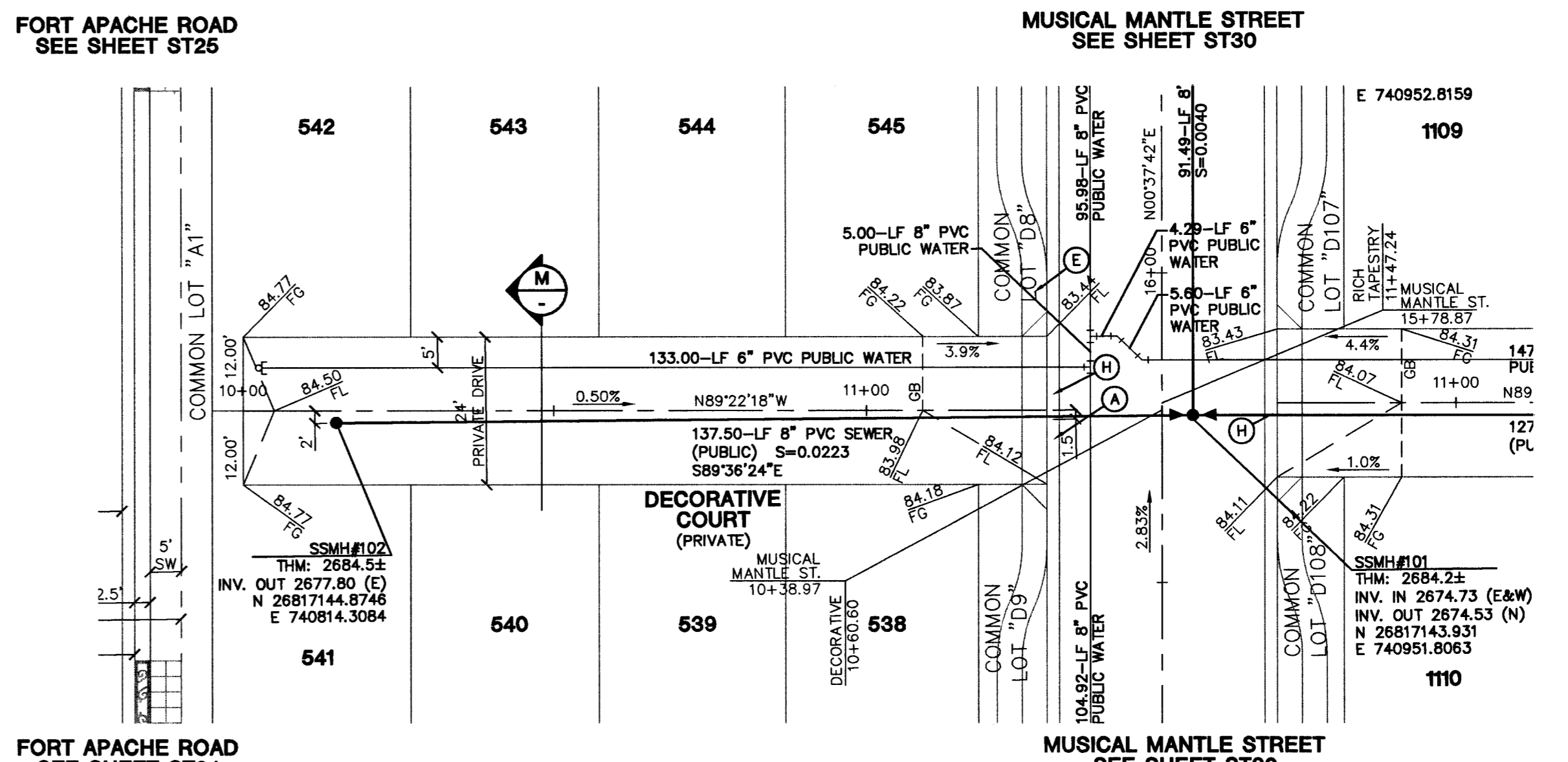
Avoid cutting underground utility lines. It's costly.
Call before you Dig
 1-800-227-2600

Avoid overhead power line contact. It's costly.
Call before you Overhead
 1-702-593-6111

NOTE
 1. ALL PRIVATE DRIVES ARE P.U.E., PUBLIC SEWER EASEMENTS, AND PUBLIC DRAINAGE EASEMENTS TO BE PRIVATELY MAINTAINED BY HOMEOWNERS ASSOCIATION.

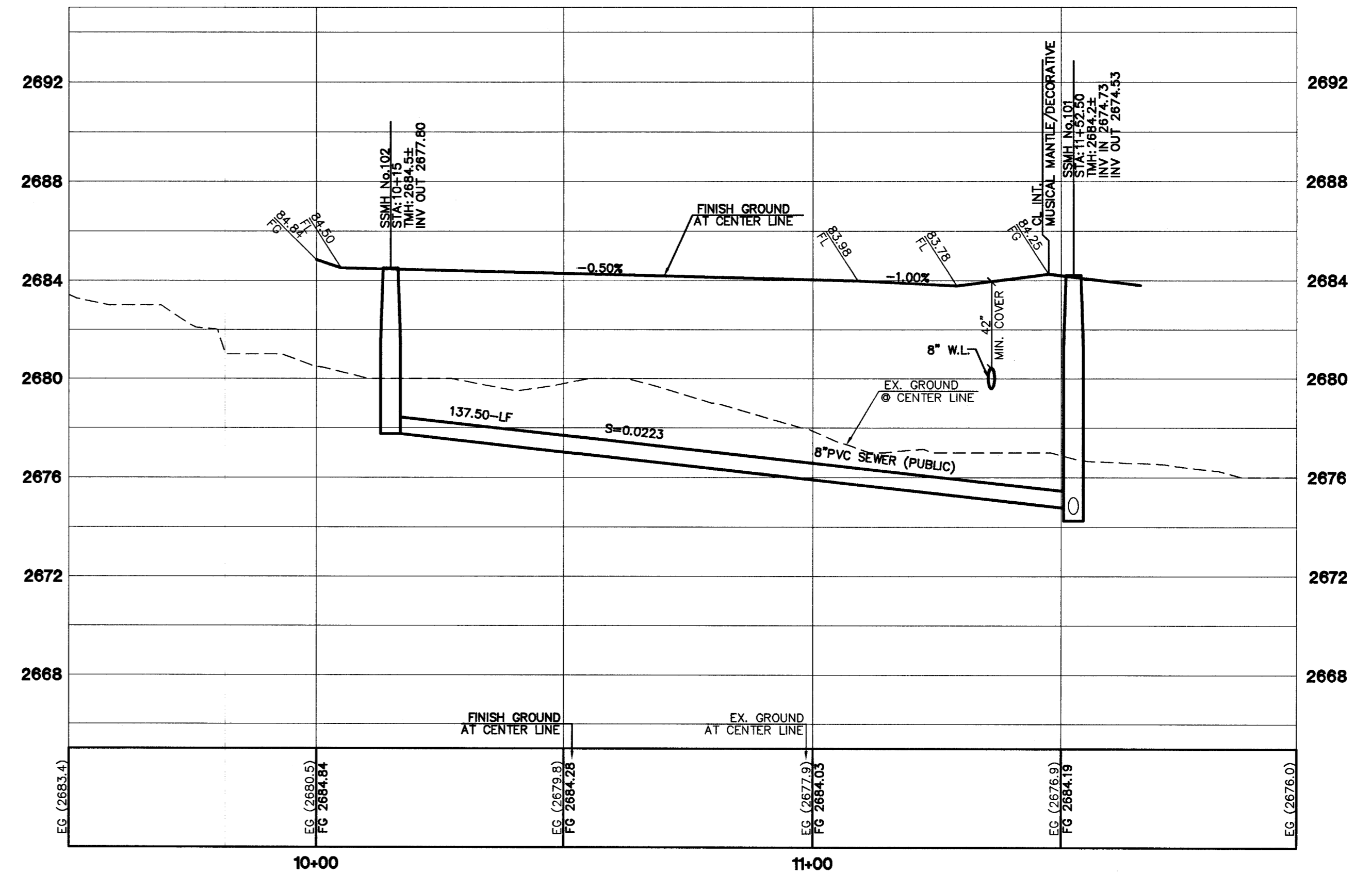
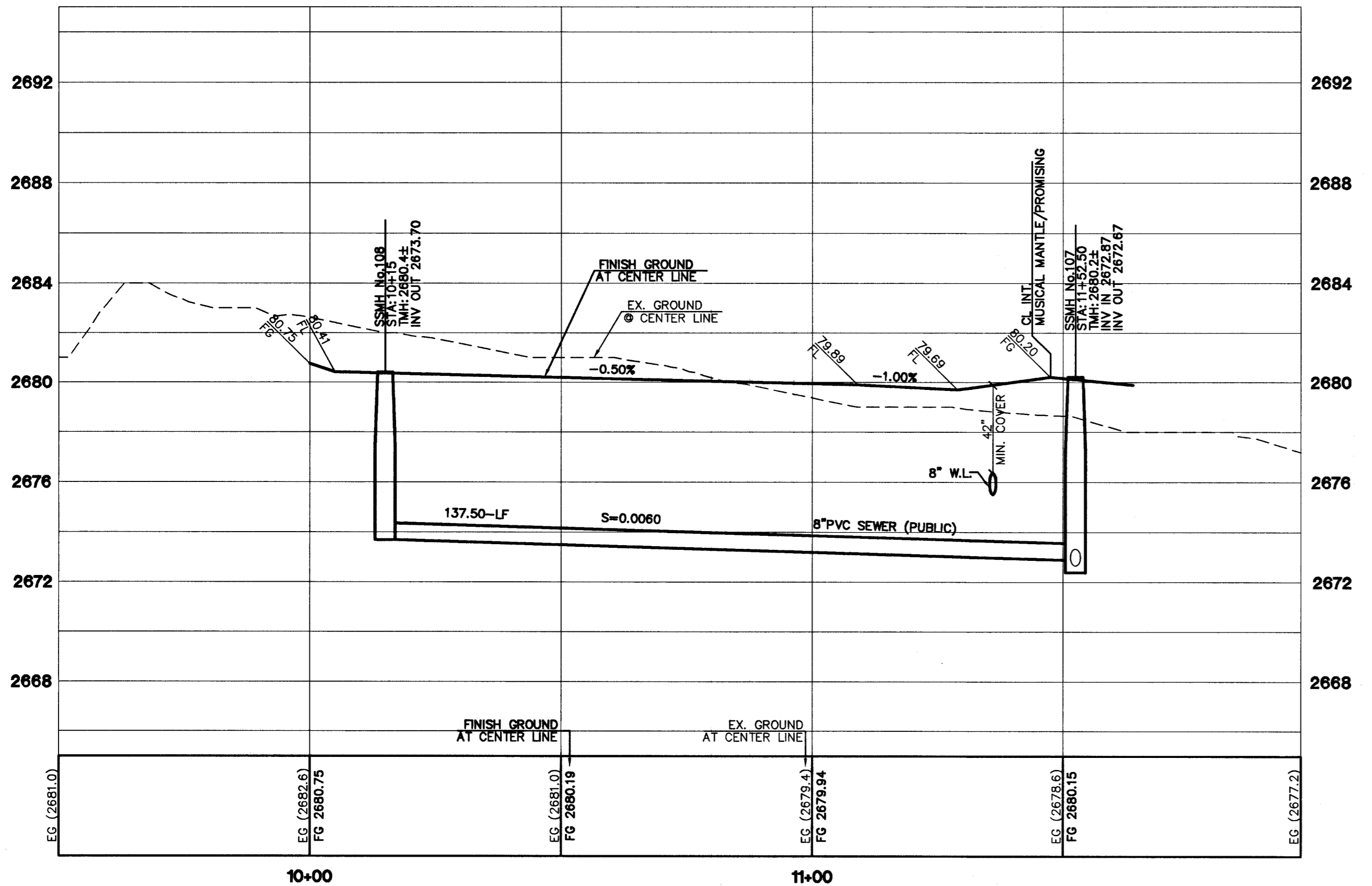


PROMISING COURT
 (PRIVATE DRIVE)



DECORATIVE COURT
 (PRIVATE DRIVE)

SCALE
 1"=20' HORIZ.
 1"=4' VERT.



72557

THE ASTORIA CORPORATION
 CITY OF LAS VEGAS
 2727 SOUTH RAINBOW BOULEVARD LAS VEGAS, NEVADA 89146-5148
 PH. (702) 878-7550 FAX (702) 362-2897

PRIVATE DRIVE AND SEWER PLAN & PROFILE PROMISING COURT AND DECORATIVE COURT
ASTORIA AT TOWN CENTER - NORTH UNIT 1

DESIGNED BY: MAY 2004
 CHECKED BY: MAY 2004
 PROJECT NO: MAY 2004
 SCALE: 1"=20' HORIZ. 1"=4' VERT.

EXPIRES 06-30-05

SS2
 86 OF 112 SHEETS
 DRAWING NO. 1074853