

BENCHMARKS
 PROJECT DATUM : NORTH AMERICAN VERTICAL DATUM OF 1988 (NAV88)
 CLARK COUNTY BENCHMARK : OC9017N6 ELEVATION : 799.0857 METERS (2621.67 FEET)
 RIVET AND SQUARE ALUMINUM PLATE IN TOP CENTER OF HEADWALL ON THE WEST SIDE OF U.S. 95 NEAR MILE MARKER 90.15.

BASIS OF BEARINGS
 NORTH 00°37'42" EAST, BEING THE BEARING OF THE WEST LINE OF THE SOUTHWEST QUARTER (SW 1/4) OF THE NORTHWEST QUARTER (NW 1/4) OF SECTION 17, TOWNSHIP 19 SOUTH, RANGE 60 EAST, M.D.M., CLARK COUNTY, NEVADA, AS SHOWN ON A RECORD OF SURVEY ON FILE IN THE CLARK COUNTY, NEVADA, RECORDER'S OFFICE, IN FILE 114 OF SURVEYS, AT PAGE 57.

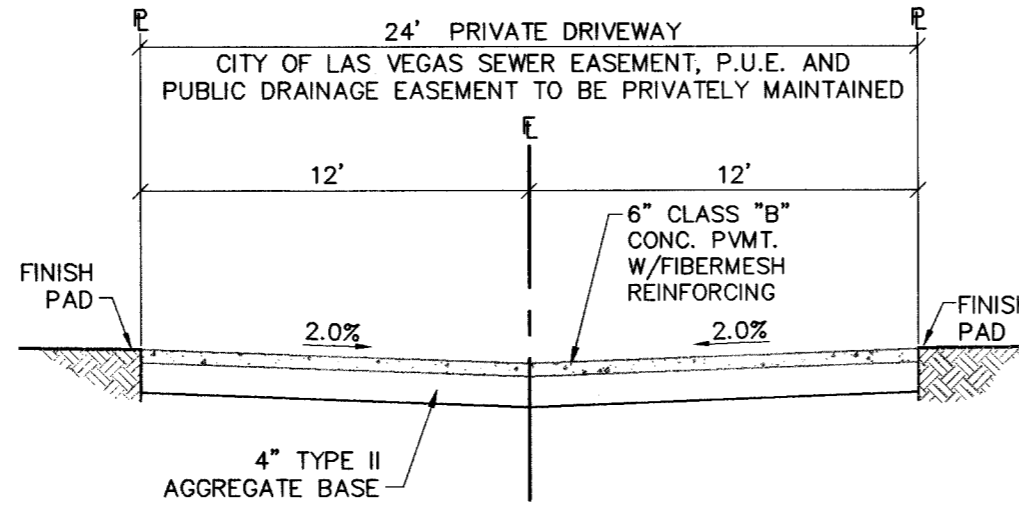
CONTRACTOR NOTE
 CONTRACTOR SHALL VERIFY HORIZONTAL AND VERTICAL LOCATION OF EXISTING UTILITIES AND NOTIFY THE DESIGN ENGINEER IMMEDIATELY OF ANY DISCREPANCIES PRIOR TO CONSTRUCTION.

CONSTRUCTION NOTES
 (A) CONSTRUCT 24" "L" TYPE CURB & GUTTER PER STD. DWG. NO. 216
 (H) CONSTRUCT 24" DEPRESSED CURB SECTION PER DETAIL "KK" ON SHEET DT1

Avoid cutting underground utility lines. It's costly.
Call before you Dig
 1-800-227-2800

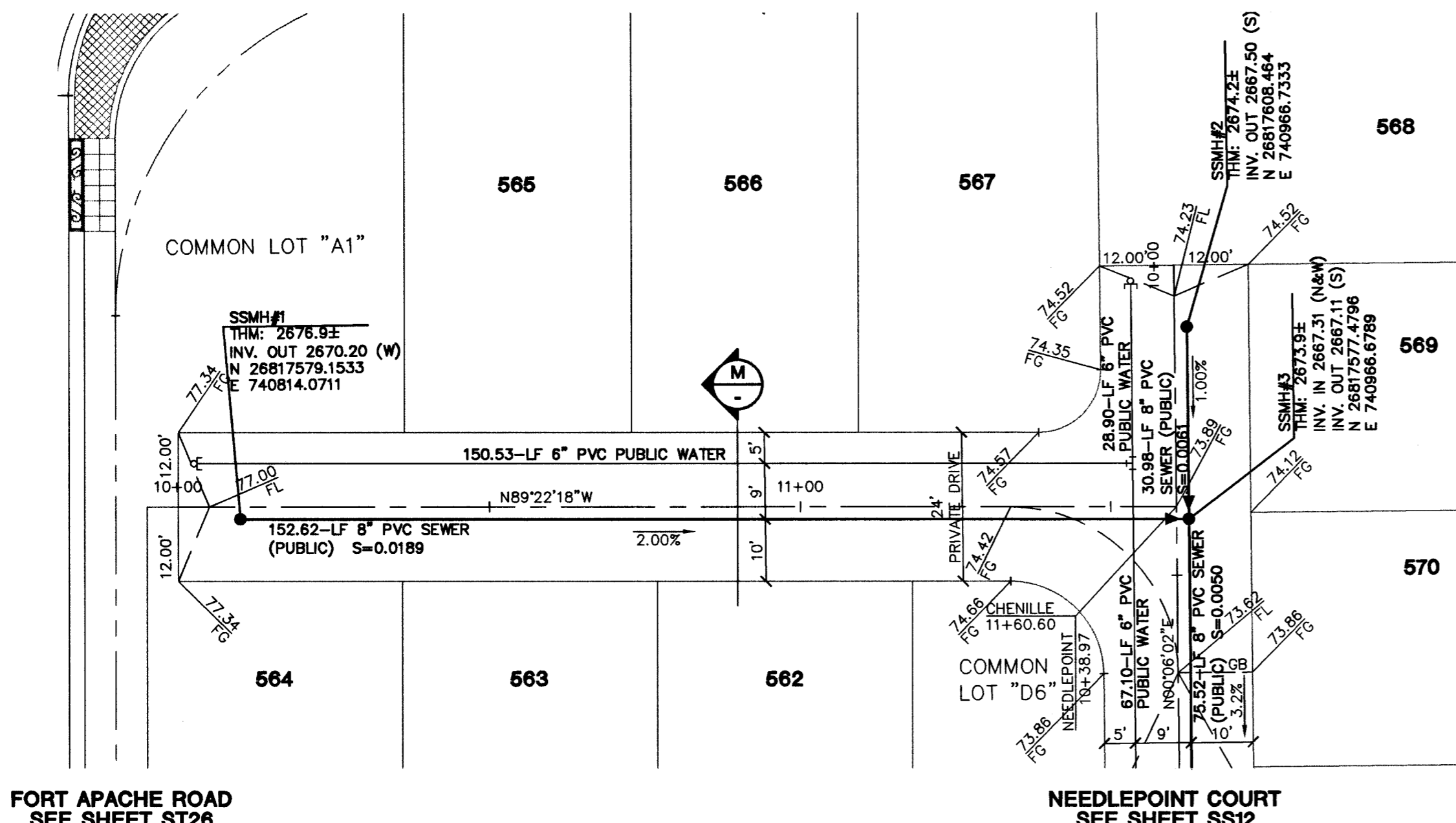
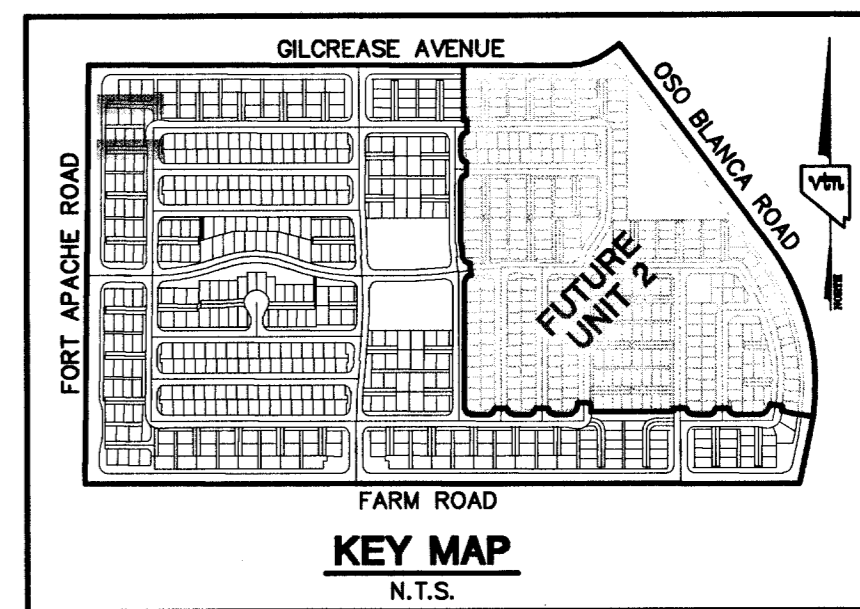
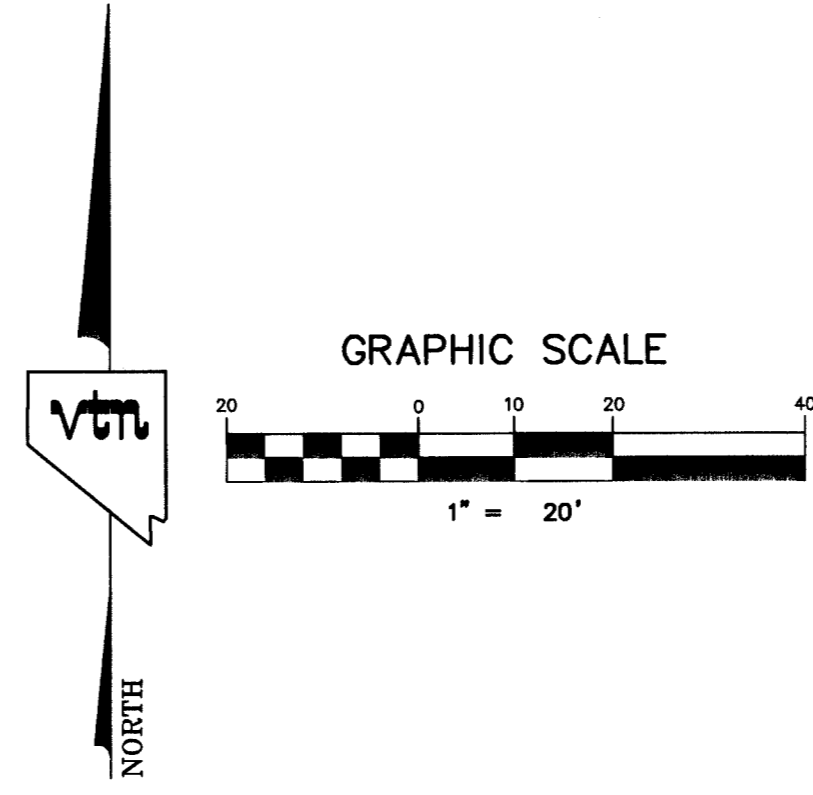
Avoid overhead power line contact. It's costly.
Call before you Overhead
 1-702-583-6111

NOTE
 1. ALL PRIVATE DRIVES ARE P.U.E., PUBLIC SEWER EASEMENTS, AND PUBLIC DRAINAGE EASEMENTS TO BE PRIVATELY MAINTAINED BY HOMEOWNERS ASSOCIATION.

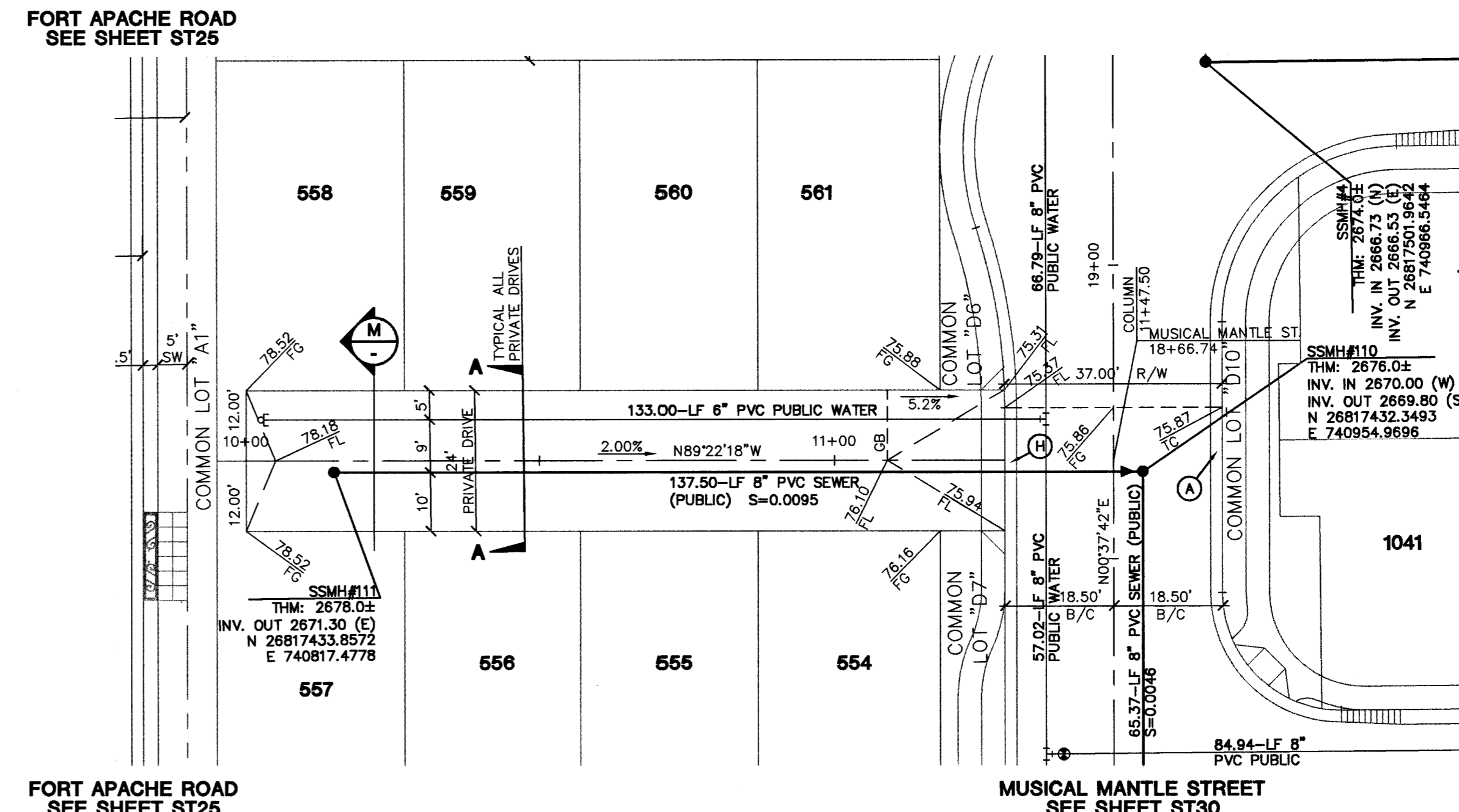


TYPICAL SECTION 24' COMMON LOT DRIVEWAY
 N.T.S. (PER STD. DWG. NO. 215)

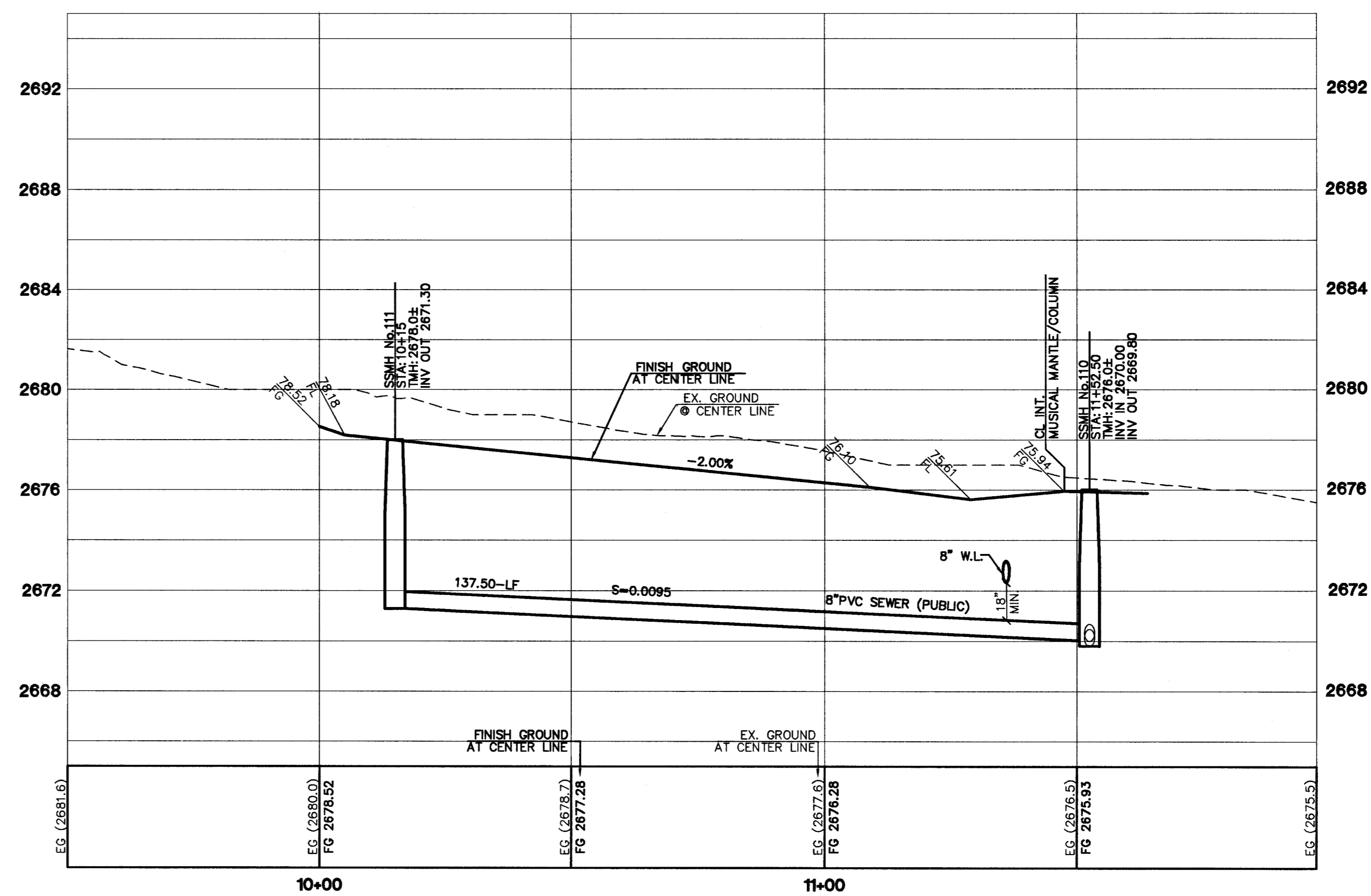
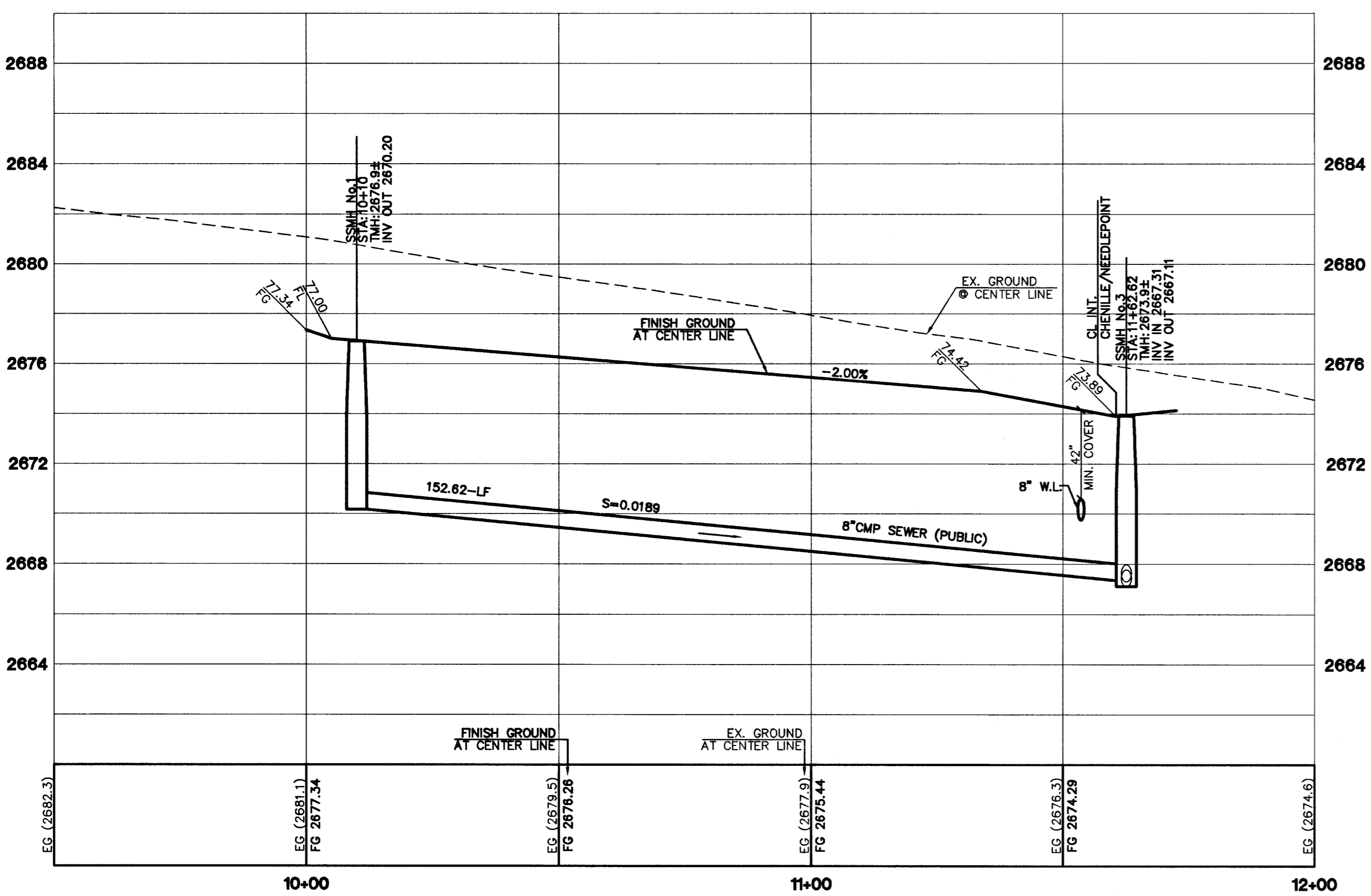
SCALE
 1"=20' HORIZ.
 1"=4' VERT.



CHENILLE COURT
 (PRIVATE DRIVE)



COLUMN COURT
 (PRIVATE DRIVE)



72556

THE ASTORIA CORPORATION
 9555 DEL WEB BOULEVARD
 LAS VEGAS, NEVADA 89154
 (702) 287-1188

CITY OF LAS VEGAS

ASTORIA AT TOWN CENTER - NORTH UNIT 1

PRIVATE DRIVE AND SEWER PLAN & PROFILE CHENILLE COURT AND COLUMN COURT

DRAWN BY: MAY 2004
 DESIGNED BY: MAY 2004
 CHECKED BY: MAY 2004
 PROJECT NO: 6048-1
 SCALE: 1"=20' HORIZ. 1"=4' VERT.

PROFESSIONAL ENGINEER STATE OF NEVADA
 CHRISTOPHER R. GRUBBS
 No. 13956
 8/9/04
 EXPIRES 06-30-05

SHEET **SS1**
 85 OF 112 SHEETS
 DRAWING NO. 10744533