

CURVE	RADIUS	LENGTH	TANGENT	DELTA
C179	20.00	5.31	2.67	151°2'20"
C180	20.00	26.11	15.29	74°48'09"
C181	20.00	24.22	13.85	69°2'34"
C182	20.00	7.19	3.63	20°35'49"

WOVEN MEMORIES STREET (PUBLIC)

**MATCHLINE - STA 13+00.00
SEE SHEET ST37**

SCALE	
1" = 20' HORIZ.	
1" = 4' VERT.	

WHEELCHAIR RAMP DATA		
NO.	"A"	"B"
1	4.5'	15.0'
2	9.5'	4.5'

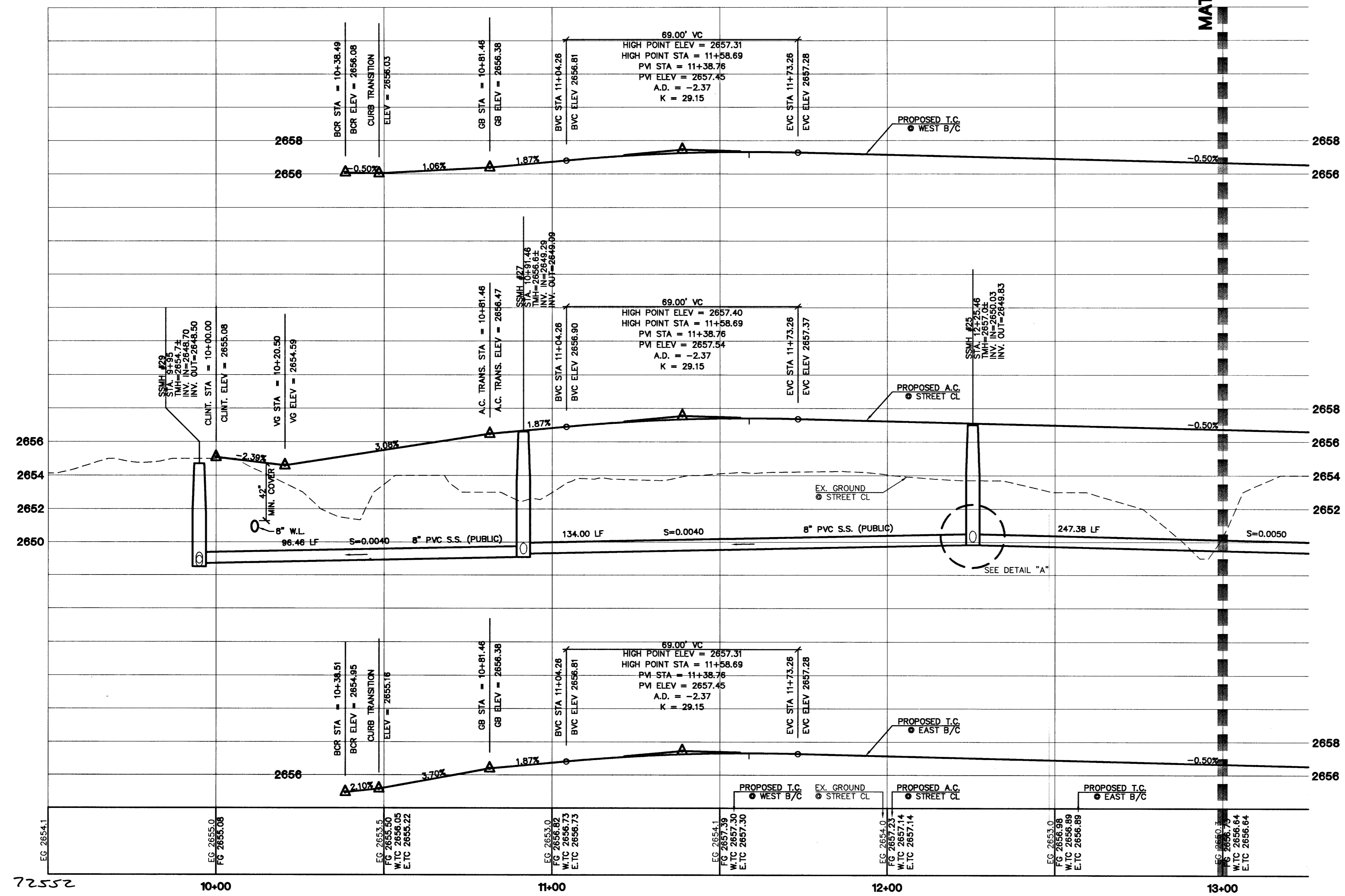
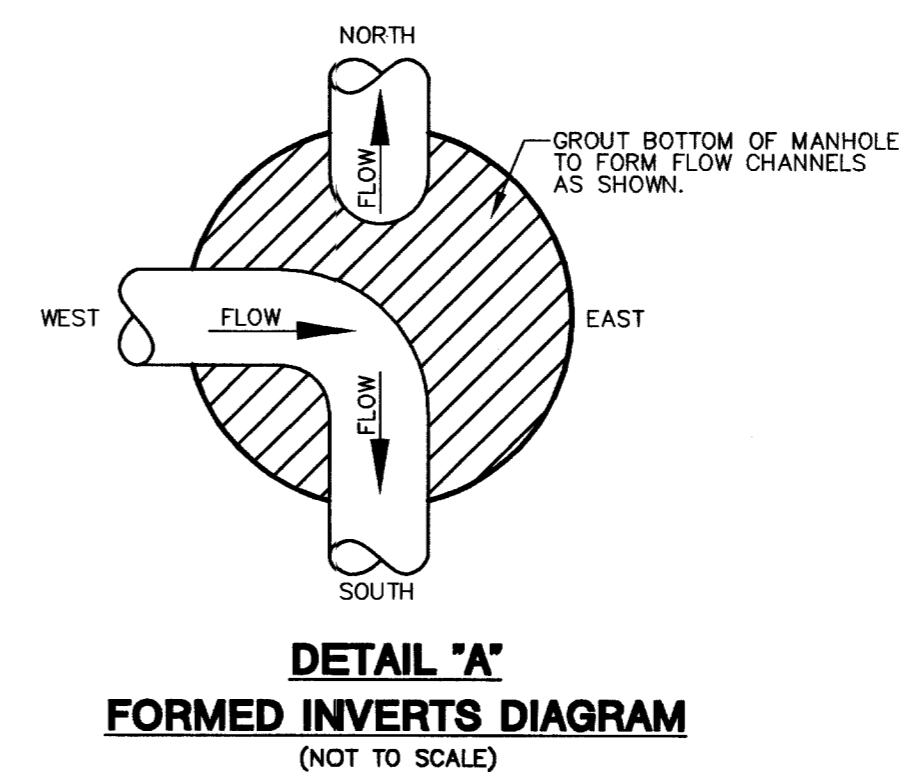
- CONSTRUCTION NOTES**
- (A) CONSTRUCT 24" "L" TYPE CURB & GUTTER PER STD. DWG. NO. 216
 - (B) CONSTRUCT 30" "ROLL" TYPE CURB & GUTTER PER STD. DWG. NO. 217A
 - (C) CONSTRUCT "A" TYPE ISLAND CURB PER STD. DWG. NO. 219
 - (D) CONSTRUCT CONCRETE CROSS GUTTER PER STD. DWG. NO. 228
 - (E) CONSTRUCT CONCRETE SIDEWALK PER STD. DWG. NO. 234
 - (F) CONSTRUCT SIDEWALK RAMP (CASE I) PER STD. DWG. NO. 235 A&B PER PLAN
 - (G) CONSTRUCT 2" WIDE UNDER SIDEWALK DRAIN PER STD. DWG. NO. 236
 - (H) CONSTRUCT 24" DEPRESSED CURB SECTION PER DETAIL "KK" ON SHEET DT3
 - (I) CONSTRUCT 10" "L" TO "ROLL" CURB TRANSITION PER DETAIL "LL" ON SHEET DT2
 - (J) CONSTRUCT BUS TURN-OUT PER STD. DWG. NO. 234.1
 - (K) CONSTRUCT SIDEWALK RAMP (MODIFIED CASE I) PER TOWN CENTER DEVELOPMENT STANDARDS. A&B PER PLAN

- NOTES**
1. ALL PRIVATE DRIVES ARE P.U.E., PUBLIC SEWER EASEMENTS, AND PUBLIC DRAINAGE EASEMENTS TO BE PRIVATELY MAINTAINED BY HOMEOWNERS ASSOCIATION.
 2. ALL DRAINAGE EASEMENTS ARE COMMON ELEMENTS AND PUBLIC DRAINAGE EASEMENTS TO BE MAINTAINED BY HOMEOWNERS ASSOCIATION.
 3. SEE SHEETS DT1, DT2, & DT3 FOR SECTIONS AND DETAILS, UNLESS OTHERWISE NOTED.
 4. SEE SHEET CR16 FOR CURVE DATA TABLE, GRADING LEGEND, AND CONSTRUCTION NOTES.
 5. ALL STATIONS SHOWN ARE BASED ON CENTERLINE STATIONING.

CONTRACTOR NOTE
CONTRACTOR SHALL VERIFY HORIZONTAL AND VERTICAL LOCATION OF EXISTING UTILITIES AND NOTIFY THE DESIGN ENGINEER IMMEDIATELY OF ANY DISCREPANCIES PRIOR TO CONSTRUCTION.

BENCHMARK
PROJECT DATUM : NORTH AMERICAN VERTICAL DATUM OF 1988 (NAVD88)
CLARK COUNTY BENCHMARK : 0C9017N6
ELEVATION : 799.0857 METERS (2621.67 FEET)
RIVET AND SQUARE ALUMINUM PLATE IN TOP CENTER OF HEADWALL ON THE WEST SIDE OF U.S. 95 NEAR MILE MARKER 90.15.

BASIS OF BEARINGS
THE BASIS OF BEARINGS FOR THIS PROJECT IS GRID NORTH AS DEFINED BY THE NEVADA COORDINATE SYSTEM OF 1983 (NCS83), EAST ZONE (2701), DETERMINED BY CLARK COUNTY GIS CONTROL POINTS 802, 803, 804, AND 805, AS SHOWN ON A RECORD OF SURVEY ON FILE IN THE CLARK COUNTY, NEVADA, RECORDER'S OFFICE, IN BOOK 88 OF SURVEYS, AT PAGE 53.



THE ASTORIA CORPORATION
CITY OF LAS VEGAS
955 DEL WEBB BOULEVARD
LAS VEGAS, NEVADA 89134
(702) 257-1188

STREET & SEWER PLAN AND PROFILE
WOVEN MEMORIES STREET

ASTORIA AT TOWN CENTER - NORTH UNIT 1

2727 SOUTH RAINBOW BOULEVARD LAS VEGAS, NEVADA 89146-5148
PH. (702) 873-7550 FAX (702) 862-2597

nvada CONSULTING ENGINEERS & LAND SURVEYORS

REVISION BY DATE

DRAWN BY: MAY 2004
DESIGNED BY: MAY 2004
CHECKED BY: MAY 2004
PROJECT NO: 8049-1
SCALE: 1"=20' HORIZ. 1"=4' VERT.

PROFESSIONAL ENGINEER STATE OF NEVADA
CHRISTOPHER A. GRUBBS
No. 13950
EXPIRES 06-30-05

Call before you Dig
1-800-227-2800

Call before you Overhead
1-702-583-6111

ST36
81 OF 112 SHEETS
DRAWING NO. 10744833