

CURVE DATA TABLE				
CURVE	RADIUS	LENGTH	TANGENT	DELTA
C311	26.00	39.75	17.48	67°45'51"
C312	26.00	10.33	5.24	22°46'19"
C313	44.00	42.14	22.85	54°52'38"
C314	44.00	13.57	6.84	17°39'53"
C315	44.00	12.25	6.16	15°56'48"
C316	44.00	13.61	6.86	17°43'36"
C317	100.00	26.43	13.29	35°08'34"

- CONSTRUCTION NOTES**
- (A) CONSTRUCT 24" "L" TYPE CURB & GUTTER PER STD. DWG. NO. 216
 - (B) CONSTRUCT 30" "ROLL" TYPE CURB & GUTTER PER STD. DWG. NO. 217A
 - (C) CONSTRUCT "A" TYPE ISLAND CURB PER STD. DWG. NO. 219
 - (D) CONSTRUCT CONCRETE CROSS GUTTER PER STD. DWG. NO. 228
 - (E) CONSTRUCT CONCRETE SIDEWALK PER STD. DWG. NO. 234
 - (F) CONSTRUCT SIDEWALK RAMP (CASE I) PER STD. DWG. NO. 235 A&B PER PLAN
 - (G) CONSTRUCT 2' WIDE UNDER SIDEWALK DRAIN PER STD. DWG. NO. 236
 - (H) CONSTRUCT 24" DEPRESSED CURB SECTION PER DETAIL "KK" ON SHEET DT3
 - (I) CONSTRUCT 10" "L" TO "ROLL" CURB TRANSITION PER DETAIL "LL" ON SHEET DT2
 - (J) CONSTRUCT BUS TURN-OUT PER STD. DWG. NO. 234.1
 - (K) CONSTRUCT SIDEWALK RAMP (MODIFIED CASE II) PER TOWN CENTER DEVELOPMENT STANDARDS. A&B PER PLAN

SCALE
 1"=20' HORIZ.
 1"=4' VERT.

- NOTES**
1. ALL PRIVATE DRIVES ARE P.U.E., PUBLIC SEWER EASEMENTS, AND PUBLIC DRAINAGE EASEMENTS TO BE PRIVATELY MAINTAINED BY HOMEOWNERS ASSOCIATION.
 2. ALL DRAINAGE EASEMENTS ARE COMMON ELEMENTS AND PUBLIC DRAINAGE EASEMENTS TO BE MAINTAINED BY HOMEOWNERS ASSOCIATION.
 3. SEE SHEETS DT1, DT2, & DT3 FOR SECTIONS AND DETAILS, UNLESS OTHERWISE NOTED.
 4. SEE SHEET GR18 FOR CURVE DATA TABLE, GRADING LEGEND, AND CONSTRUCTION NOTES.
 5. ALL STATIONS SHOWN ARE BASED ON CENTERLINE STATIONING.

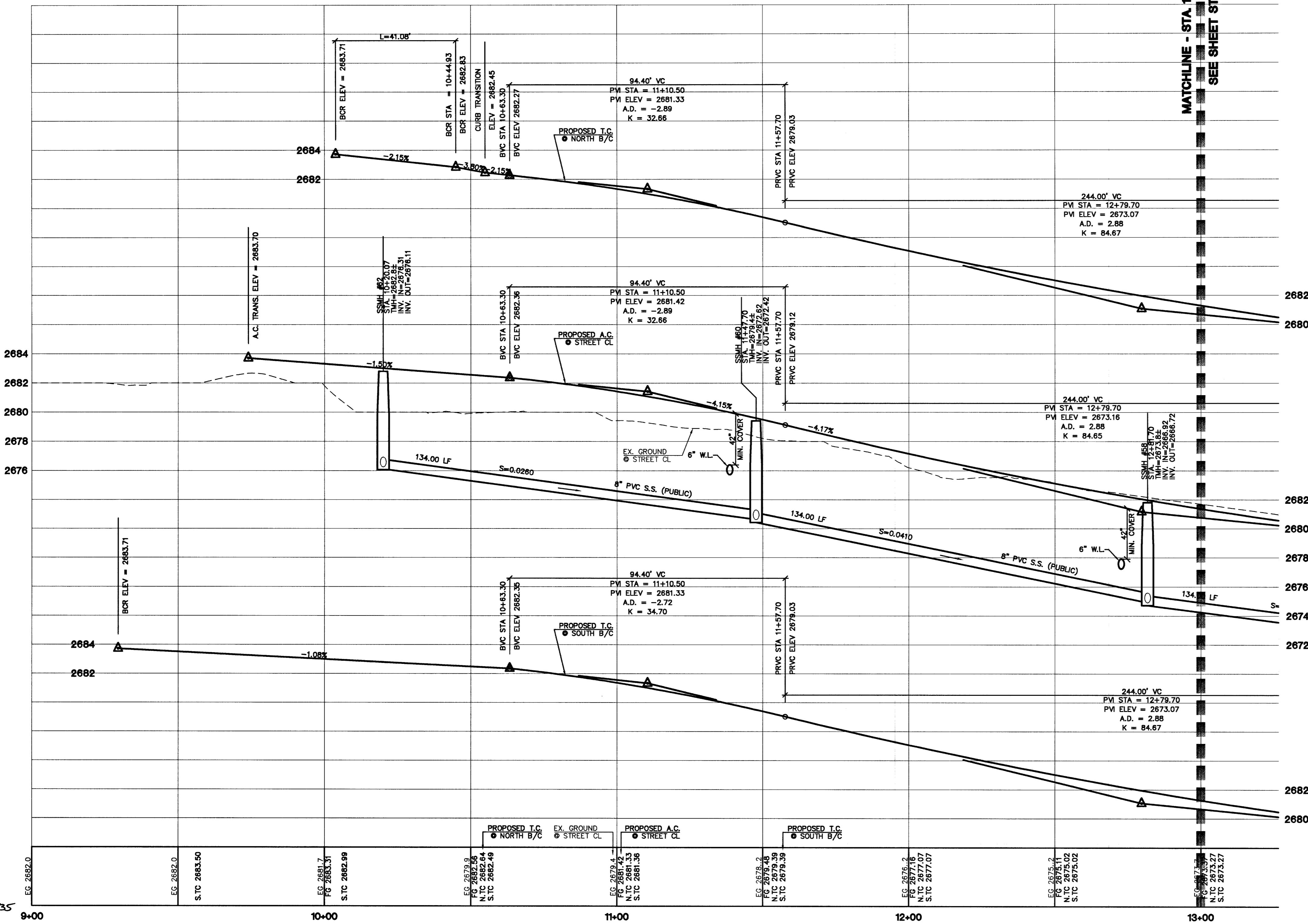
CONTRACTOR NOTE
 CONTRACTOR SHALL VERIFY HORIZONTAL AND VERTICAL LOCATION OF EXISTING UTILITIES AND NOTIFY THE DESIGN ENGINEER IMMEDIATELY OF ANY DISCREPANCIES PRIOR TO CONSTRUCTION.

BENCHMARK
 PROJECT DATUM - NORTH AMERICAN VERTICAL DATUM OF 1988 (NAVD88)
 CLARK COUNTY BENCHMARK - 009017N6
 ELEVATION - 799.0857 METERS (2621.67 FEET)
 RIVET AND SQUARE ALUMINUM PLATE IN TOP CENTER OF HEADWALL ON THE WEST SIDE OF U.S. 95 NEAR MILE MARKER 90.15.

BASIS OF BEARINGS
 THE BASIS OF BEARINGS FOR THIS PROJECT IS GRID NORTH AS DEFINED BY THE NEVADA COORDINATE SYSTEM OF 1983 (NCS83), EAST ZONE (2701), DETERMINED BY CLARK COUNTY GIS CONTROL POINTS 802, 803, 804, AND 805, AS SHOWN ON A RECORD OF SURVEY ON FILE IN THE CLARK COUNTY, NEVADA, RECORDER'S OFFICE, IN BOOK 88 OF SURVEYS, AT PAGE 53.

Avoid cutting underground utility lines. It's costly.
Call before you Dig
 1-800-227-2600

Avoid overhead power line contact. It's costly.
Call before you Overhead
 1-702-593-6111



THE ASTORIA CORPORATION
 CITY OF LAS VEGAS
 2727 SOUTH RAINBOW BOULEVARD LAS VEGAS, NEVADA 89146-5148
 PH. (702) 873-7550 FAX (702) 362-2597
 9555 DEL WEBB BOULEVARD LAS VEGAS, NEVADA 89134
 (702) 257-1188
novada
 CONSULTING ENGINEERS • PLANNERS • LAND SURVEYORS

STREET & SEWER PLAN AND PROFILE
GABARDINE AVENUE
ASTORIA AT TOWN CENTER - NORTH UNIT 1

DRAWN BY: MAY 2004
DESIGNED BY: MAY 2004
CHECKED BY: MAY 2004
PROJECT NO.: 8048-1
SCALE: 1"=20' HORIZ. 1"=4' VERT.

PROFESSIONAL ENGINEER STATE OF NEVADA
 CHRISTOPHER A. RUBBS
 CIVIL ENGINEER
 No. 13956 EXPIRES 05-30-05
 SHEET **ST19**
 64 OF 112 SHEETS
 DRAWING NO. 10714833