

CURVE DATA TABLE				
CURVE	RADIUS	LENGTH	TANGENT	DELTA
C254	20.00	28.27	17.08	80°59'52"
C255	20.00	3.33	1.67	9°31'48"
C256	20.00	6.81	3.34	18°56'11"
C257	20.00	24.62	14.14	70°32'09"

- CONSTRUCTION NOTES**
- (A) CONSTRUCT 24" "L" TYPE CURB & GUTTER PER STD. DWG. NO. 216
 - (B) CONSTRUCT 30" "ROLL" TYPE CURB & GUTTER PER STD. DWG. NO. 217A
 - (C) CONSTRUCT "A" TYPE ISLAND CURB PER STD. DWG. NO. 219
 - (D) CONSTRUCT CONCRETE CROSS GUTTER PER STD. DWG. NO. 228
 - (E) CONSTRUCT CONCRETE SIDEWALK PER STD. DWG. NO. 234
 - (F) CONSTRUCT SIDEWALK RAMP (CASE I) PER STD. DWG. NO. 235 A&B PER PLAN
 - (G) CONSTRUCT 2' WIDE UNDER SIDEWALK DRAIN PER STD. DWG. NO. 236
 - (H) CONSTRUCT 24" DEPRESSED CURB SECTION PER DETAIL "KK" ON SHEET DT3
 - (I) CONSTRUCT 10" "L" TO "ROLL" CURB TRANSITION PER DETAIL "LL" ON SHEET DT2
 - (J) CONSTRUCT BUS TURN-OUT PER STD. DWG. NO. 234.1
 - (K) CONSTRUCT SIDEWALK RAMP (MODIFIED CASE II) PER TOWN CENTER DEVELOPMENT STANDARDS, A&B PER PLAN

SCALE

1"=20' HORIZ.
1"=4' VERT.

WHEELCHAIR RAMP DATA

NO.	"A"	"B"
2	4.5'	15.0'
5	8.0'	8.0'
6	9.5'	4.5'

- NOTES**
1. ALL PRIVATE DRIVES ARE P.U.E., PUBLIC SEWER EASEMENTS, AND PUBLIC DRAINAGE EASEMENTS TO BE PRIVATELY MAINTAINED BY HOMEOWNERS ASSOCIATION.
 2. ALL DRAINAGE EASEMENTS ARE COMMON ELEMENTS AND PUBLIC DRAINAGE EASEMENTS TO BE MAINTAINED BY HOMEOWNERS ASSOCIATION.
 3. SEE SHEETS DT1, DT2, & DT3 FOR SECTIONS AND DETAILS, UNLESS OTHERWISE NOTED.
 4. SEE SHEET GR16 FOR CURVE DATA TABLE, GRADING LEGEND, AND CONSTRUCTION NOTES.
 5. ALL STATIONS SHOWN ARE BASED ON CENTERLINE STATIONING.

CONTRACTOR NOTE

CONTRACTOR SHALL VERIFY HORIZONTAL AND VERTICAL LOCATION OF EXISTING UTILITIES AND NOTIFY THE DESIGN ENGINEER IMMEDIATELY OF ANY DISCREPANCIES PRIOR TO CONSTRUCTION.

BENCHMARK

PROJECT DATUM : NORTH AMERICAN VERTICAL DATUM OF 1988 (NAVD88)

CLARK COUNTY BENCHMARK : 0C9017N6
ELEVATION : 799.0857 METERS (2621.67 FEET)

RIVET AND SQUARE ALUMINUM PLATE IN TOP CENTER OF HEADWALL ON THE WEST SIDE OF U.S. 95 NEAR MILE MARKER 90.15.

BASIS OF BEARINGS

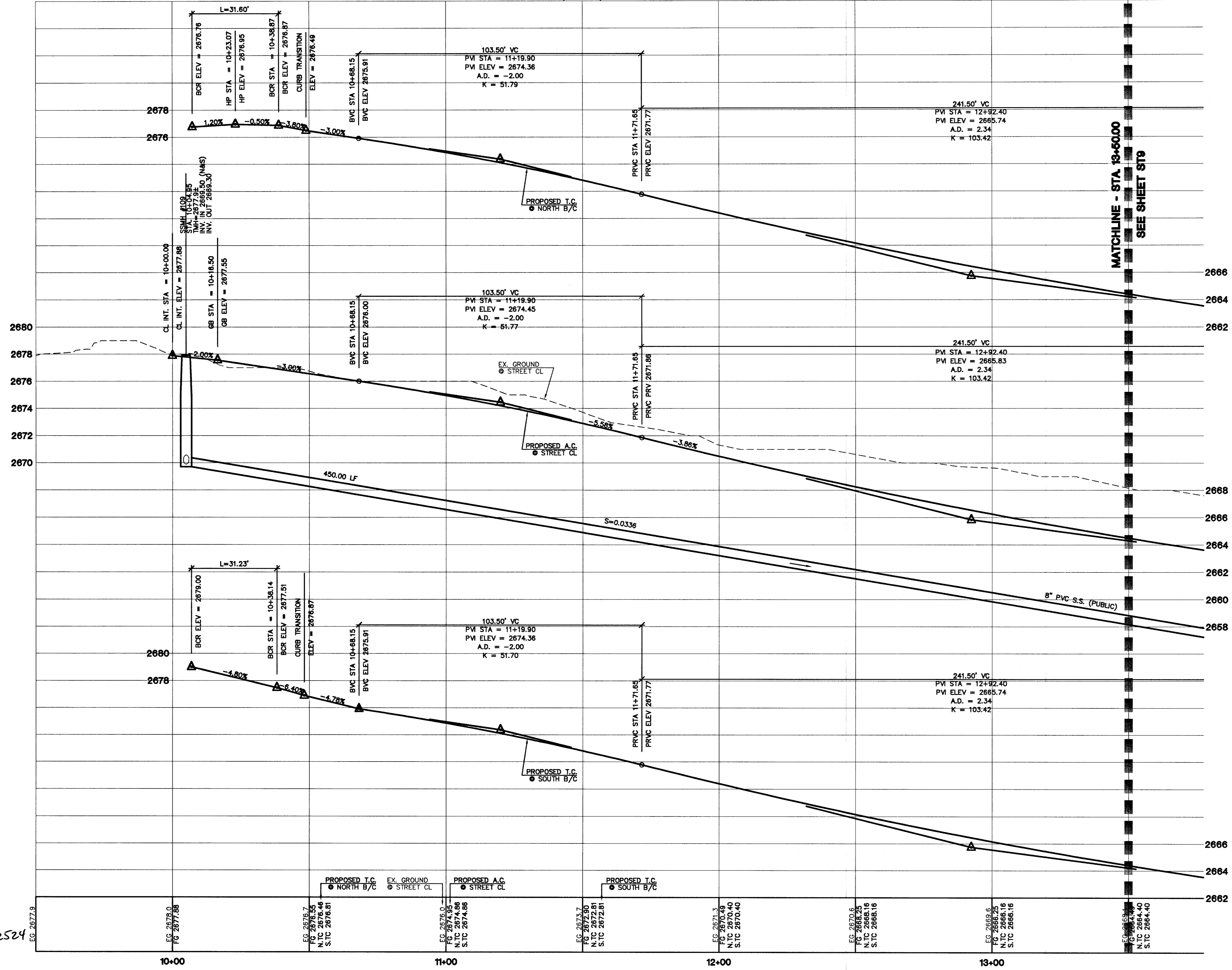
THE BASIS OF BEARINGS FOR THIS PROJECT IS GRID NORTH AS DEFINED BY THE NEVADA COORDINATE SYSTEM OF 1983 (NCS83), EAST ZONE (2701), DETERMINED BY CLARK COUNTY GIS CONTROL POINTS 802, 803, 804, AND 805, AS SHOWN ON A RECORD OF SURVEY ON FILE IN THE CLARK COUNTY, NEVADA, RECORDER'S OFFICE, IN BOOK 88 OF SURVEYS, AT PAGE 53.

Avoid cutting underground utility lines. It's costly.

Call before you Dig
1-800-227-2800

Avoid overhead power line contact. It's costly.

Call before you Overhead
1-702-583-6111



THE ASTORIA CORPORATION
CITY OF LAS VEGAS

9555 DEL WEBB BOULEVARD
LAS VEGAS, NEVADA 89134
(702) 297-1188

2727 SOUTH RAINBOW BOULEVARD LAS VEGAS, NEVADA 89146-5146
PH. (702) 873-7550 FAX (702) 362-2597

nevada CONSULTING ENGINEERS • PLANNERS • LAND SURVEYORS

STREET & SEWER PLAN AND PROFILE
PEARL COTTON AVENUE

ASTORIA AT TOWN CENTER - NORTH
UNIT 1

DRAWN BY: MAY 2004

DESIGNED BY: MAY 2004

CHECKED BY: MAY 2004

PROJECT NO: 6049-1

SCALE: 1"=20' HORIZ.
1"=4' VERT.

PROFESSIONAL ENGINEER STATE OF NEVADA

CHRISTOPHER J. GIBSON
No. 13956
CIVIL

EXPIRES 06-30-05

SHEET **ST8**
53 OF 112 SHEETS

DRAWING NO. 10744833