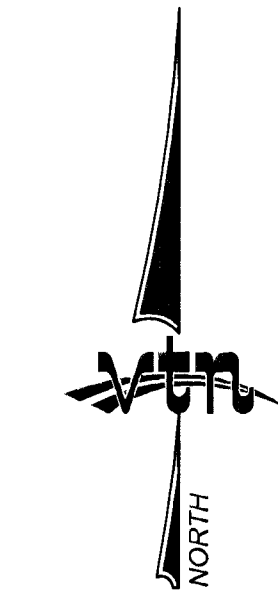
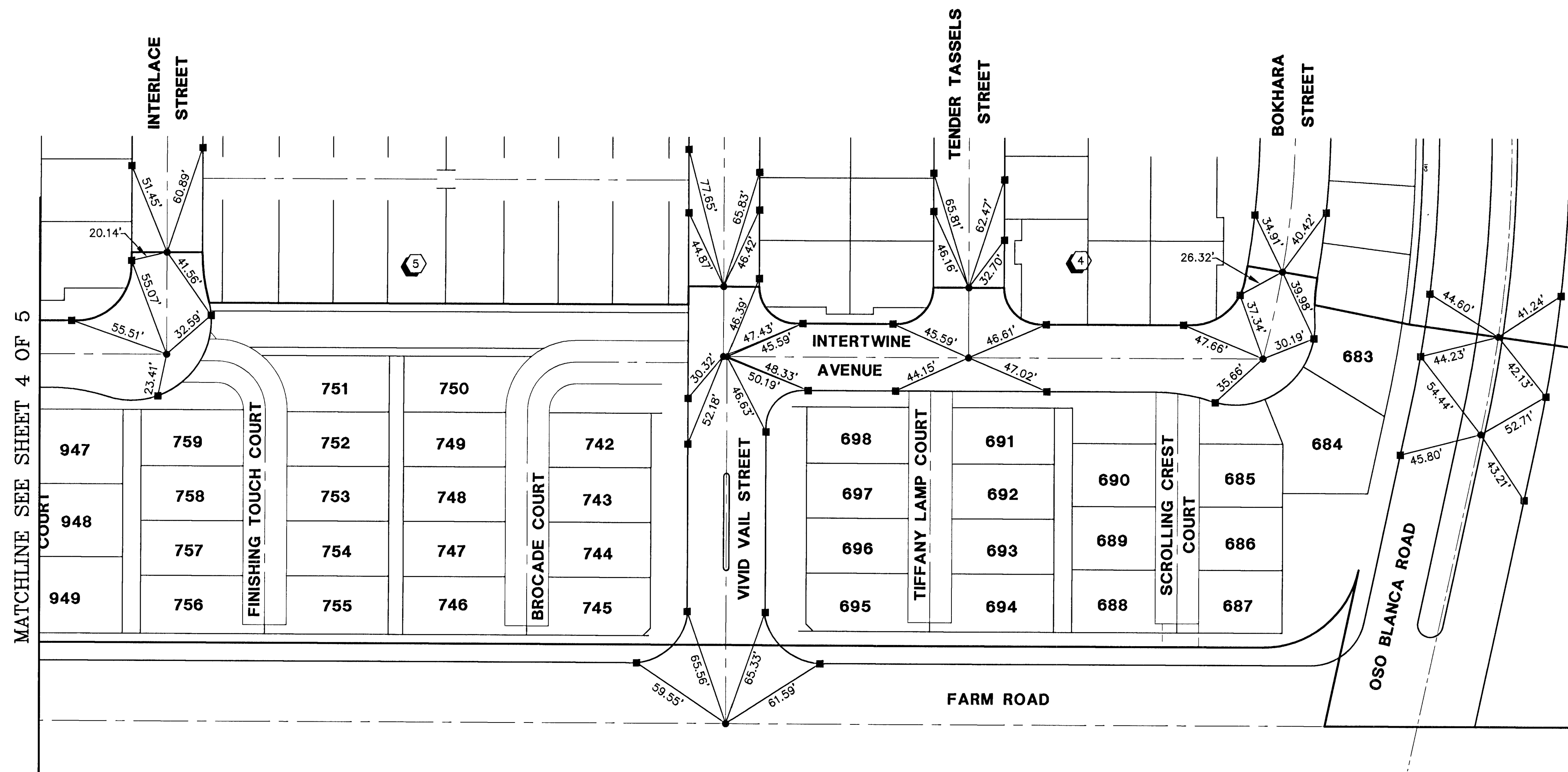
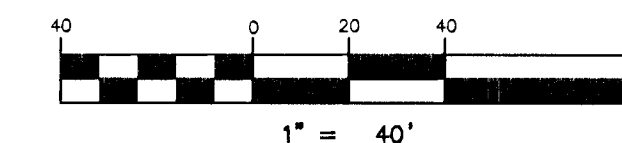


ASTORIA AT TOWN CENTER NORTH - UNIT 1 MONUMENTATION TIE MAP

(A COMMON INTEREST COMMUNITY)
BEING A SUBDIVISION OF A PORTION OF GOVERNMENT LOT 5 AND A PORTION OF GOVERNMENT LOT 6 OF SECTION 17,
TOWNSHIP 19 SOUTH, RANGE 60 EAST, M.D.M., CITY OF LAS VEGAS, CLARK COUNTY, NEVADA.



GRAPHIC SCALE



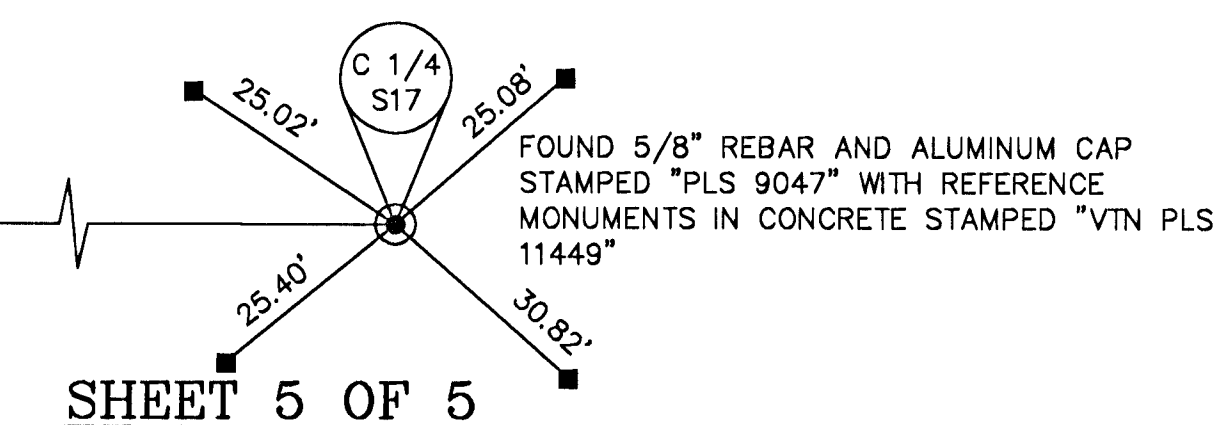
MATCHLINE SEE SHEET 4 OF 5

NOTES

SEE FINAL MAP FOR BEARING AND DISTANCES.
(BOOK 119, PAGE 45)

LEGEND

- 2 LOT NUMBER
- BLOCK NUMBER
- RIGHT OF WAY
- LOT LINES
- SUBDIVISION BOUNDARY LINE
- STREET CENTERLINE
- BACK OF CURB LINE
- 5/8" REBAR AND AL. CAP STAMPED "VTN PLS 11449" WITH REFERENCE MONUMENTS IN TOP BACK OF CURB
- REFERENCE MONUMENTS STAMPED "VTN PLS 11449" IN TOP OF CURB
- FOUND MONUMENT AS DESCRIBED



SHEET 5 OF 5

VTN
NEVADA

CONSULTING ENGINEERS • PLANNERS • LAND SURVEYORS
2727 SOUTH RAINBOW BOULEVARD
LAS VEGAS, NEVADA 89102
(702) 873 - 7550 FAX (702) 362 - 2597

MONUMENTATION TIE MAP

FOR
ASTORIA AT TOWN CENTER NORTH - UNIT 1
(BOOK 119 OF PLATS, PAGE 45)
LOCATED IN A PORTION OF GOVERNMENT LOT 5 AND LOT 6
S. 17, T. 19 S., R. 60 E., M.D.M., CITY OF LAS VEGAS,
CLARK COUNTY, NEVADA

SCALE: 1" = 40'	W.O.# 6049	DATE: 7/12/2011	SHEET	OF
FILE: 6049MTM	DRN. BY: JCB	REV.:	5	5
	CKD. BY:			

127494

JUL 13 2011