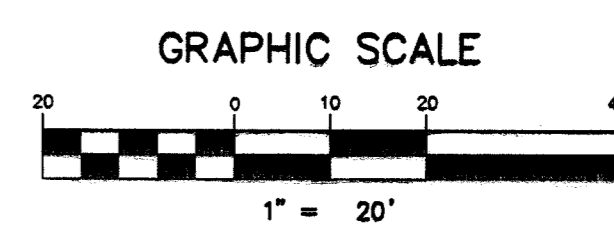
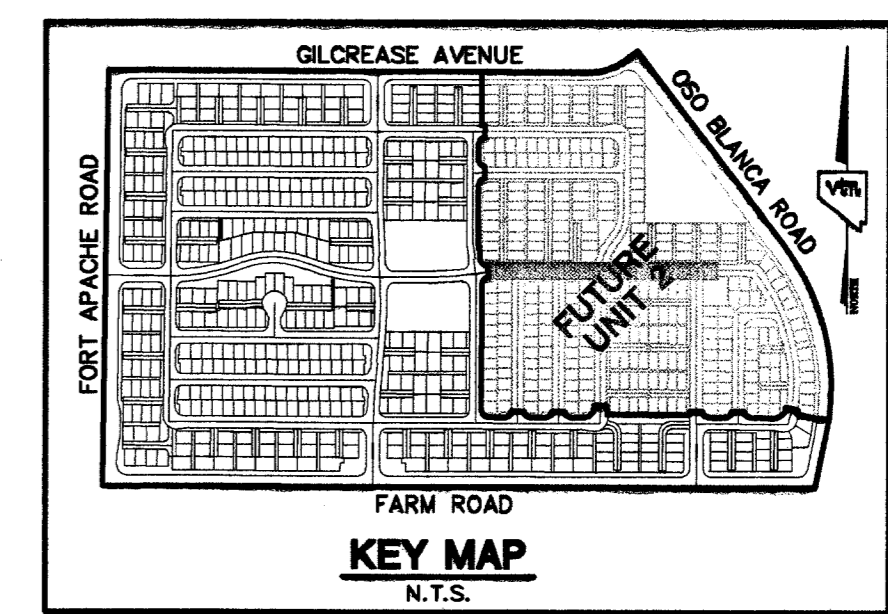


MATCHLINE FOR CONTINUATION SEE SHEET UT6

MATCHLINE STA: 26+05.44
SEE SHEET UT21

SCALE
1"=20' HORIZ.
1"=4' VERT.



ALL LOTS LOCATED ON PRIVATE DRIVES ARE TO BE SPRINKLERED PER CITY OF LAS VEGAS FIRE DEPARTMENT

FIRE SPRINKLER SYSTEM SHALL BE PLUMBED TO MASTER TOILET. NO EXCEPTIONS ALLOWED.

ADJUST WATER VALVE BOXES TO FINISHED GRADE PER UDACS PLATE NO. 8 VALVE SHALL BE ACCESSIBLE AT ALL TIMES.

NOTES
1. ALL PRIVATE DRIVES ARE P.U.E., PUBLIC SEWER EASEMENTS, AND PUBLIC DRAINAGE EASEMENTS TO BE PRIVATELY MAINTAINED BY HOMEOWNERS ASSOCIATION.
2. SEE SHEET UT22 FOR S.S. MANHOLE SCHEDULE, LEGENDS, DETAILS, NOTES, AND QUANTITY ESTIMATE.
3. * INDICATES SPRINKLERED LOTS

Avoid cutting underground utility lines. It's costly.
Call before you Dig
1-800-227-2600

NOTES
SEE SHEET UT22 FOR MANHOLE SCHEDULE, LEGEND, AND DETAILS.

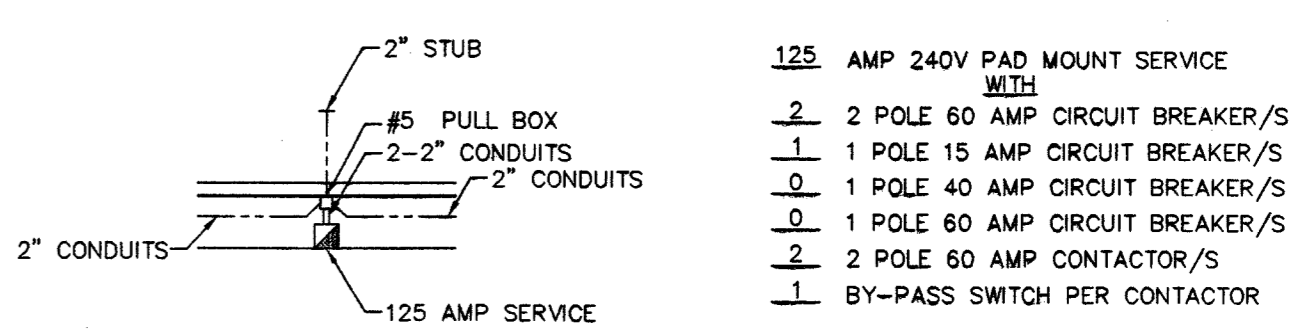
Avoid overhead power line contact. It's costly.
Call before you Overhead
1-702-227-2929

CONTRACTOR NOTE
CONTRACTOR SHALL VERIFY HORIZONTAL AND VERTICAL LOCATION OF EXISTING UTILITIES AND NOTIFY THE DESIGN ENGINEER IMMEDIATELY OF ANY DISCREPANCIES PRIOR TO CONSTRUCTION.

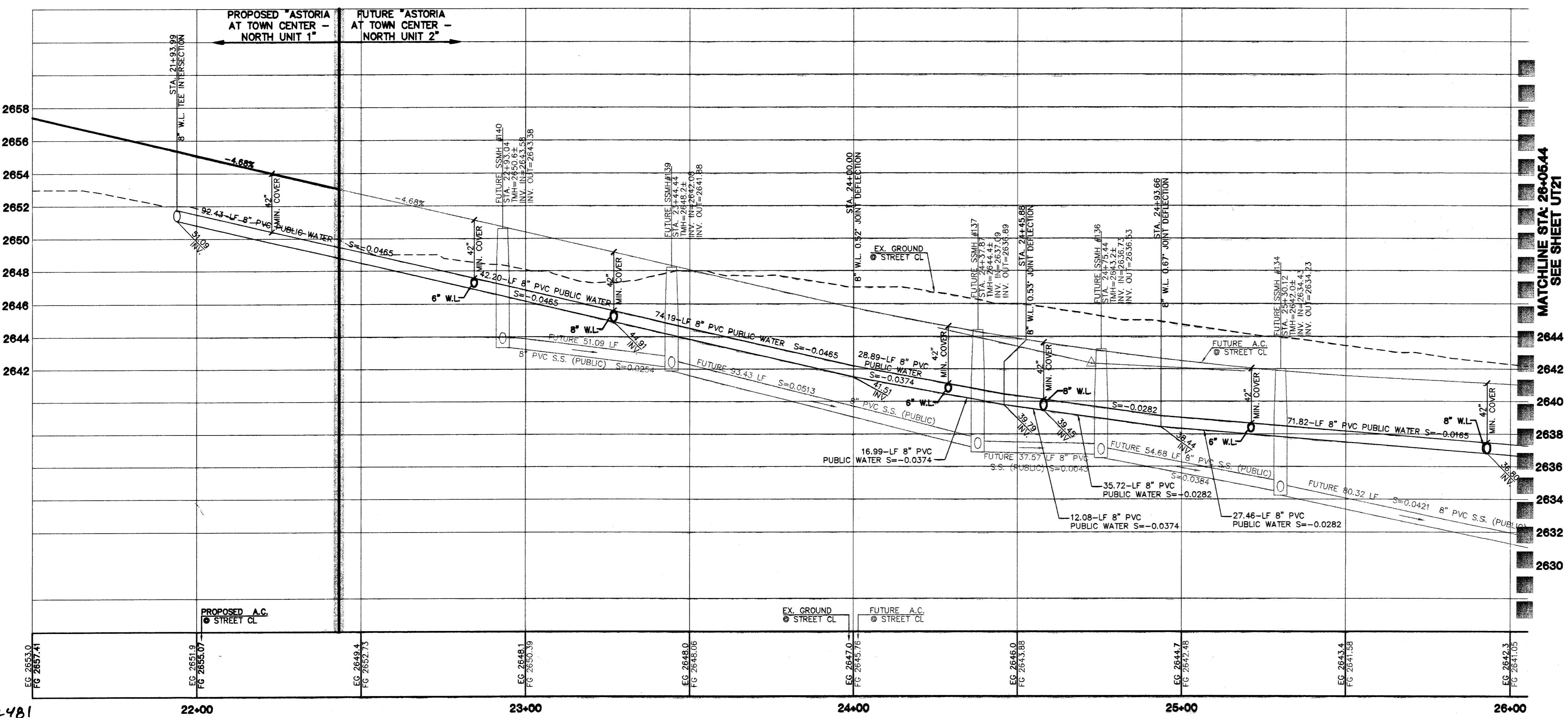
BENCHMARKS
PROJECT DATUM: NORTH AMERICAN VERTICAL DATUM OF 1988 (NAVD88)
CLARK COUNTY BENCHMARK: 0C9017N6
ELEVATION: 799.0857 METERS (2621.67 FEET)
RIVET AND SQUARE ALUMINUM PLATE IN TOP CENTER OF HEADWALL ON THE WEST SIDE OF U.S. 95 NEAR MILE MARKER 30.15.

BASIS OF BEARINGS
NORTH 00°37'42" EAST, BEING THE BEARING OF THE WEST LINE OF THE SOUTHWEST QUARTER (SW 1/4) OF THE NORTHWEST QUARTER (NW 1/4) OF SECTION 17, TOWNSHIP 19 SOUTH, RANGE 60 EAST, M.D.M., CLARK COUNTY, NEVADA, AS SHOWN ON A RECORD OF SURVEY ON FILE IN THE CLARK COUNTY, NEVADA, RECORDER'S OFFICE, IN FILE 114 OF SURVEYS, AT PAGE 57.

8. WHEN A SEWER MAIN OR SEWER LATERAL CROSSES OVER A WATER MAIN, WATER QUALITY PIPE MUST BE USED PER UDACS SECTION 2.19.02. WHEN A SEWER MAIN OR SEWER LATERAL CROSSES UNDER A WATER MAIN WITH LESS THAN 18" OF CLEARANCE, WATER QUALITY PIPE MUST BE USED PER UDACS SECTION 2.19.02.



APPROVAL:
LAS VEGAS VALLEY WATER DISTRICT
PROJECT 2958B SHEETS 1 THRU 23
DATE
8/2/04
DATE



MATCHLINE STA: 26+05.44
SEE SHEET UT21

72481

THE ASTORIA CORPORATION
CITY OF LAS VEGAS
2727 SOUTH RAINBOW BOULEVARD LAS VEGAS, NEVADA 89146-9148
PH. (702) 873-7800 FAX (702) 352-2587
vtn Nevada CONSULTING ENGINEERS PLANNERS & LAND SURVEYORS

MASTER UTILITY PLAN & STRIPING / SIGNAGE / STREETLIGHT PLAN
ASTORIA AT TOWN CENTER - NORTH UNIT 1

DRAWN BY: TP
DESIGNED BY: TP
CHECKED BY: TP
PROJECT NO: 6089-1
SCALE: 1"=20' HORIZ. N/A
MAY 2004
MAY 2004
MAY 2004

PROFESSIONAL ENGINEER STATE OF NEVADA
CHRISTOPHER J. MARSHALL
13956
EXPIRES 06-30-05
11/28/04

SHEET
UT7
10 OF 112 SHEETS
DRAWING NO.
1/1/04 22