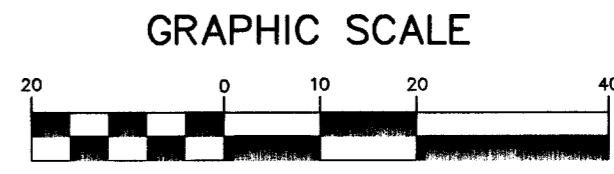
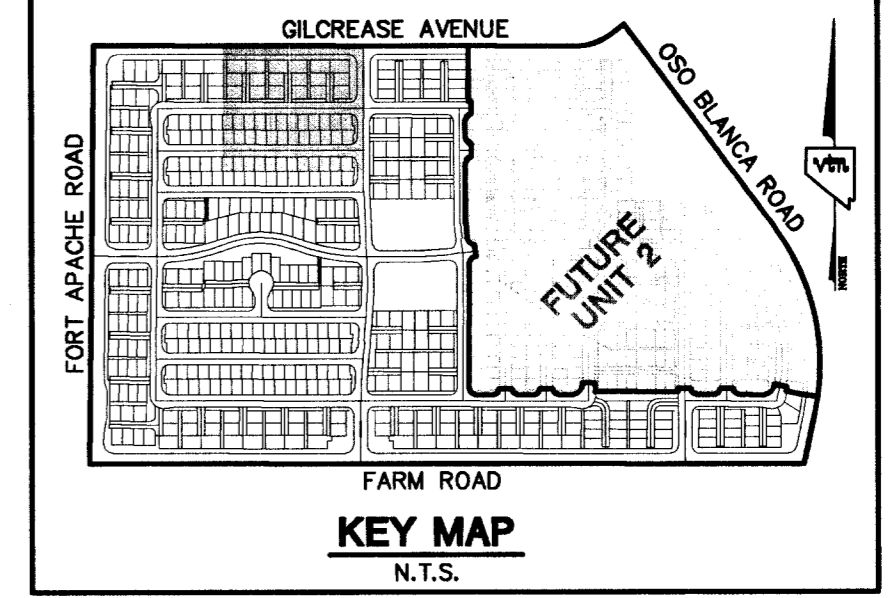


ALL LOTS THIS SHEET
 THIS PROPERTY MAY HAVE STATIC WATER PRESSURE IN EXCESS OF 80 PSI. THE UNIFORM PLUMBING CODE REQUIRES THAT INDIVIDUAL ON-SITE (PRIVATE) PRESSURE REDUCING VALVES BE INSTALLED WHENEVER THE PRESSURE EXCEEDS 80 PSI. PRV'S ARE THE DEVELOPER'S RESPONSIBILITY, AND WILL NOT BE INSPECTED OR INCLUDED IN THE ACCEPTANCE OF LVWD FACILITIES

UNDEVELOPED
 OWNER: TIGHI FAMILY LP
 APN 125-17-101-001

GILCREASE AVENUE
 (PUBLIC)



ALL LOTS LOCATED ON PRIVATE DRIVES ARE TO BE SPRINKLERED PER CITY OF LAS VEGAS FIRE DEPARTMENT

FIRE SPRINKLER SYSTEM SHALL BE PLUMBED TO MASTER TOILET. NO EXCEPTIONS ALLOWED.

NOTES
 1. ALL PRIVATE DRIVES ARE P.U.E., PUBLIC SEWER EASEMENTS, AND PUBLIC DRAINAGE EASEMENTS TO BE PRIVATELY MAINTAINED BY HOMEOWNERS ASSOCIATION.
 2. SEE SHEET UT22 FOR S.S. MANHOLE SCHEDULE, LEGENDS, DETAILS, NOTES, AND QUANTITY ESTIMATE.
 3. * INDICATES SPRINKLERED LOTS

SINGLE METER BOX - ARMORCAST
 BOX - P8000485T
 LID - A8000484T

DUAL METER BOX - ARMORCAST
 BOX - A8000480
 LID - A8000481

NOTES
 ADJUST WATER VALVE BOXES TO FINISHED GRADE PER UDACS PLATE. NO. 8 VALVE SHALL BE ACCESSIBLE AT ALL TIMES.

Call before you Overhead
 1-702-227-2929

Call before you Dig
 1-800-227-2600

NOTES
 SEE SHEET UT22 FOR MANHOLE SCHEDULE, LEGEND, AND DETAILS.

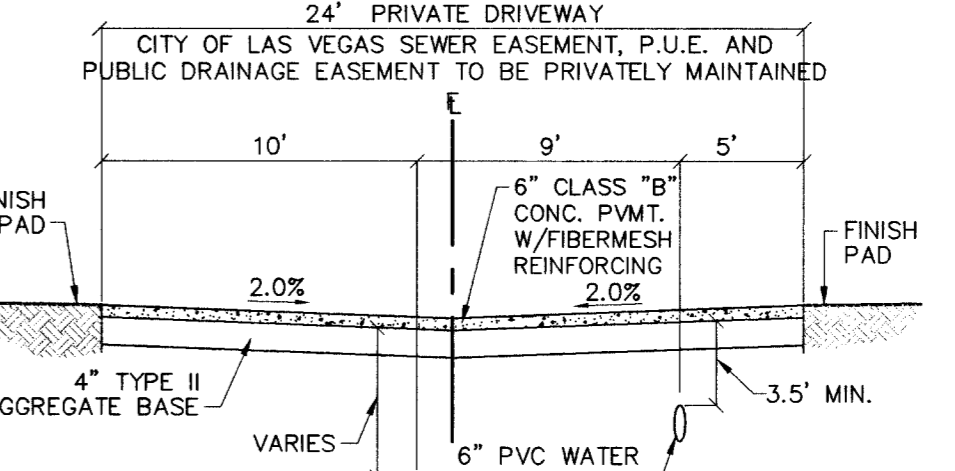
CONTRACTOR NOTE
 CONTRACTOR SHALL VERIFY HORIZONTAL AND VERTICAL LOCATION OF EXISTING UTILITIES AND NOTIFY THE DESIGN ENGINEER IMMEDIATELY OF ANY DISCREPANCIES PRIOR TO CONSTRUCTION.

BENCHMARKS
 PROJECT DATUM: NORTH AMERICAN VERTICAL DATUM OF 1988 (NAVD88)
 CLARK COUNTY BENCHMARK: 0C9017N6
 ELEVATION: 799.0857 METERS (2621.67 FEET)
 RIVET AND SQUARE ALUMINUM PLATE IN TOP CENTER OF HEADWALL ON THE WEST SIDE OF U.S. 95 NEAR MILE MARKER 90.15.

BASIS OF BEARINGS
 NORTH 00°37'42" EAST, BEING THE BEARING OF THE WEST LINE OF THE SOUTHWEST QUARTER (SW 1/4) OF THE NORTHWEST QUARTER (NW 1/4) OF SECTION 17, TOWNSHIP 19 SOUTH, RANGE 60 EAST, M.D.M., CLARK COUNTY, NEVADA, AS SHOWN ON A RECORD OF SURVEY ON FILE IN THE CLARK COUNTY, NEVADA, RECORDER'S OFFICE, IN FILE 114 OF SURVEYS, AT PAGE 57.

NOTE
 DOUBLE WRAP LATERAL-MAN TO METER BOX.

§ WHEN A SEWER MAIN OR SEWER LATERAL CROSSES OVER A WATER MAIN, WATER QUALITY PIPE MUST BE USED PER UDACS SECTION 2.19.02. WHEN A SEWER MAIN OR SEWER LATERAL CROSSES UNDER A WATER MAIN WITH LESS THAN 18" OF CLEARANCE, WATER QUALITY PIPE MUST BE USED PER UDACS SECTION 2.19.02.



SECTION A-A
 PRIVATE DRIVE

APPROVAL:

LAS VEGAS VALLEY WATER DISTRICT
 PROJECT 29568 SHEETS 1 THRU 23
 DATE: 8/2/04
 CITY: THE MARSHALL

THE ASTORIA CORPORATION
 CITY OF LAS VEGAS
 2727 SOUTH RAINBOW BOULEVARD LAS VEGAS, NEVADA 89146-5148
 PH: (702) 873-7550 FAX (702) 362-2597
 CONSULTING ENGINEERS • PLANNERS • LAND SURVEYORS

THE ASTORIA CORPORATION
 9555 DEL WEBB BOULEVARD
 LAS VEGAS, NEVADA 89134
 (702) 257-1188

MASTER UTILITY PLAN & STRIPING / SIGNAGE / STREETLIGHT PLAN

ASTORIA AT TOWN CENTER - NORTH UNIT 1

DRAWN BY: TP
 DESIGNED BY: TP
 CHECKED BY: DF
 PROJECT NO: 8069-1
 SCALE: 1"=20' HORIZ. N/A VERT.

MAY 2004
 MAY 2004
 MAY 2004

EXPIRES 06-30-05

SHEET
UT2
 5 OF 112 SHEETS
 DRAWING NO.
 10744833

MATCHLINE FOR CONTINUATION SEE SHEET UT1

MATCHLINE FOR CONTINUATION SEE SHEET UT3

MATCHLINE FOR CONTINUATION SEE SHEET UT5

72476